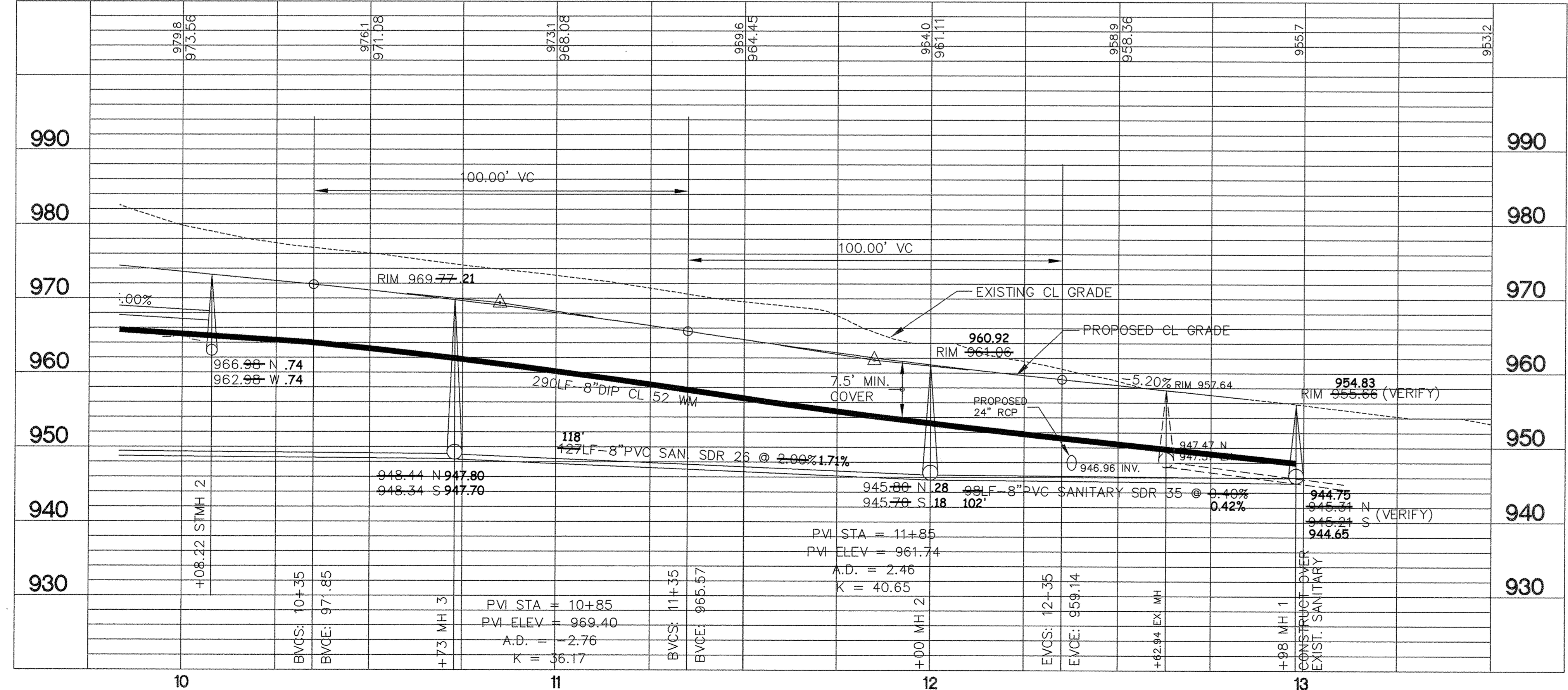
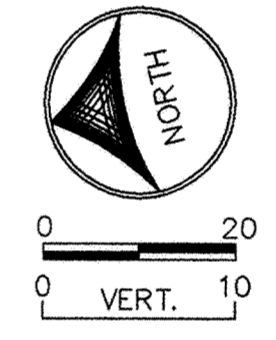
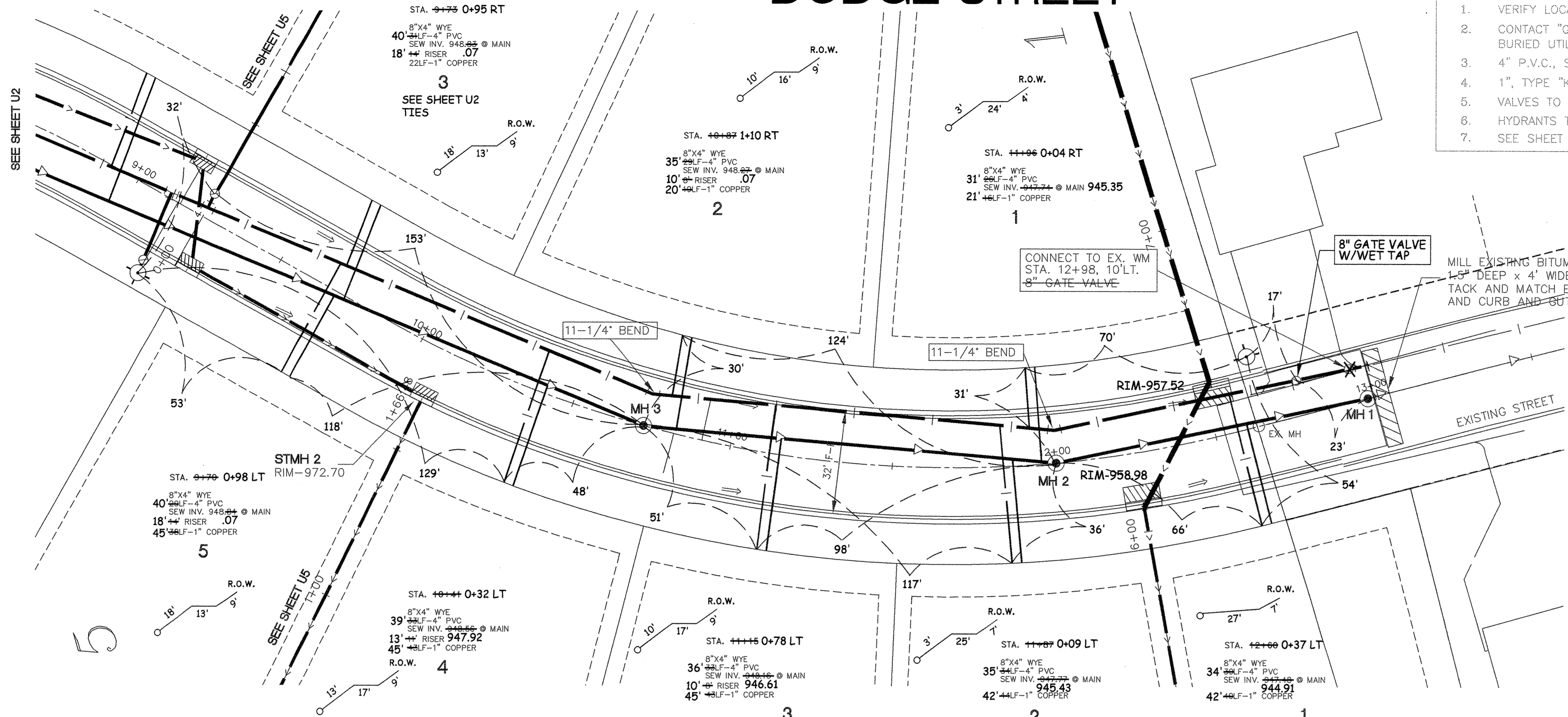


DODGE STREET

- NOTES:**
1. VERIFY LOCATION AND ELEVATIONS OF EXISTING UTILITIES.
 2. CONTACT "GOPHER STATE ONE CALL" FOR LOCATIONS OF BURIED UTILITIES. CALL (651) 454-0002 OR 1 (800) 252-1166.
 3. 4" P.V.C., SDR 26, SANITARY SEWER SERVICES.
 4. 1", TYPE "K" COPPER, WATER SERVICE.
 5. VALVES TO BE PLACED 3' FROM HYDRANT.
 6. HYDRANTS TO BE 8'-6" BURY.
 7. SEE SHEET U3 FOR STORM SEWER SCHEDULE

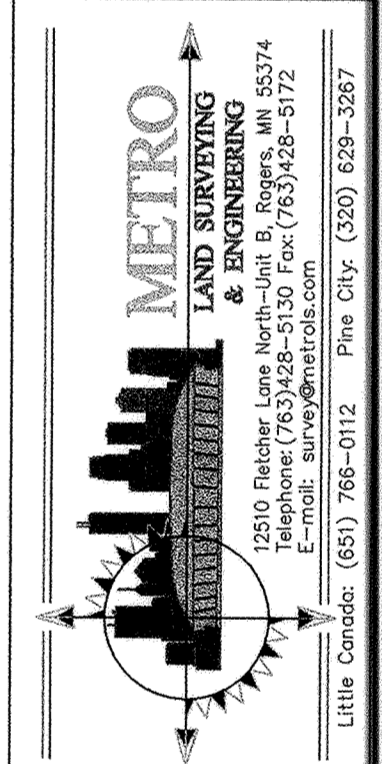


STRUCTURE	NEENAH CASTING	SIZE
CB-2	R-3067-V	48" DIA. STMH
CB-5	R-3067-V	48" DIA. STMH
CB-6	R-3067-V	48" DIA. STMH
CB-7	R-1733	48" DIA. STMH
CB-8	R-3067-V	48" DIA. STMH
CB-9	R-3067-V	24" X 36" BOX
CB-10	R-3067-V	48" DIA. STMH
CB-11	R-3067-V	48" DIA. STMH
CB-12	R-3067-V	24" X 36" BOX

NOTE: SEE SHEET D3 FOR STANDARD DETAIL

OWNER/DEVELOPER
RIVERSIDE COMPANIES
 19230 EVANS STREET, SUITE 115
 ELK RIVER, MINNESOTA
 PHONE: 763-241-1801

OWNER/DEVELOPER
RIVERSIDE COMPANIES
 19230 EVANS STREET, SUITE 115
 ELK RIVER, MINNESOTA
 PHONE: 763-241-1801



DATE	REVISIONS	BY
05/17/05	REVISED STORM DESIGN	JS/PK
03/07/05	REVISED PER CITY COMMENTS	JS/PK
02/05/05	REVISED PER CLIENTS REQUEST	JPS
02/05/05	REVISED PER STORM CONTACT	EY
04/07/07	AS-BUILT PER CITY	ET

RECORD PLAN
 2006

U3