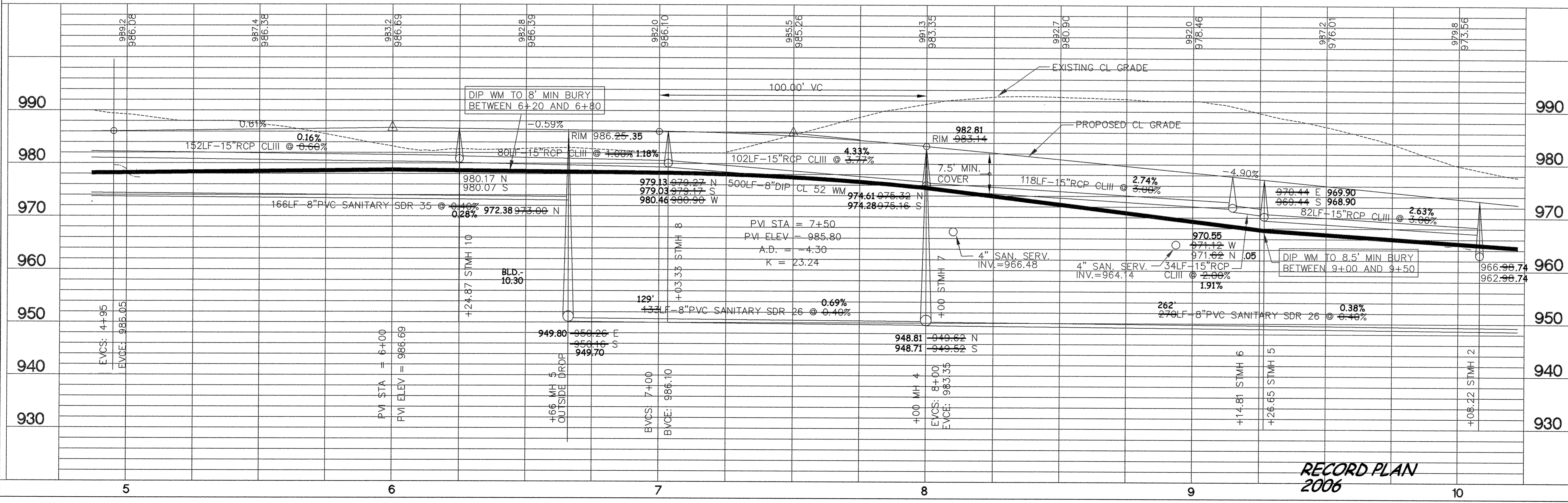


- NOTES:**
1. VERIFY LOCATION AND ELEVATIONS OF EXISTING UTILITIES.
 2. CONTACT "GOPHER STATE ONE CALL" FOR LOCATIONS OF BURIED UTILITIES. CALL (651) 454-0002 OR 1 (800) 252-1166.
 3. 4" P.V.C., SDR 26, SANITARY SEWER SERVICES.
 4. 1", TYPE "K" COPPER, WATER SERVICE.
 5. VALVES TO BE PLACED 3' FROM HYDRANT.
 6. HYDRANTS TO BE 8'-6" BURY.
 7. SEE SHEET U3 FOR STORM SEWER SCHEDULE.

DODGE STREET



**RECORD PLAN
2006**

DRAWN: GSO		DATE: 8/08/02		SCALE: 1" = 20'		PROJECT: 103-64		CHECKED: 103-64		APPROVED:	
SANITARY SEWER, WATERMAIN, STORM SEWER AND STREET CONSTRUCTION HILLSIDE ESTATES 10TH ADDITION DODGE STREET STA. 0+00 TO 5+00 CITY OF ELK RIVER, MINNESOTA											
OWNER/DEVELOPER: RIVERSIDE COMPANIES 19230 EVANS STREET, SUITE 115 ELK RIVER, MINNESOTA PHONE: 763-241-1801											
METRO LAND SURVEYING & ENGINEERING 1550 Park Ave. North, Elk River, MN 55327 Telephone: (763) 281-5130 Fax: (763) 281-5174 E-mail: metro@metroland.com Little Canada: (651) 768-0112 Pine City: (320) 828-3287											
DATE		REVISIONS		BY							
08/17/05		REVISED STORM DESIGN		AS/PK							
08/10/05		REVISED PER CITY COMMENTS		AS/PK							
02/09/04		REVISED PER CLIENT REQUEST		JPS							
04/10/07		AS-BUILT PER CITY		EY							
U2											