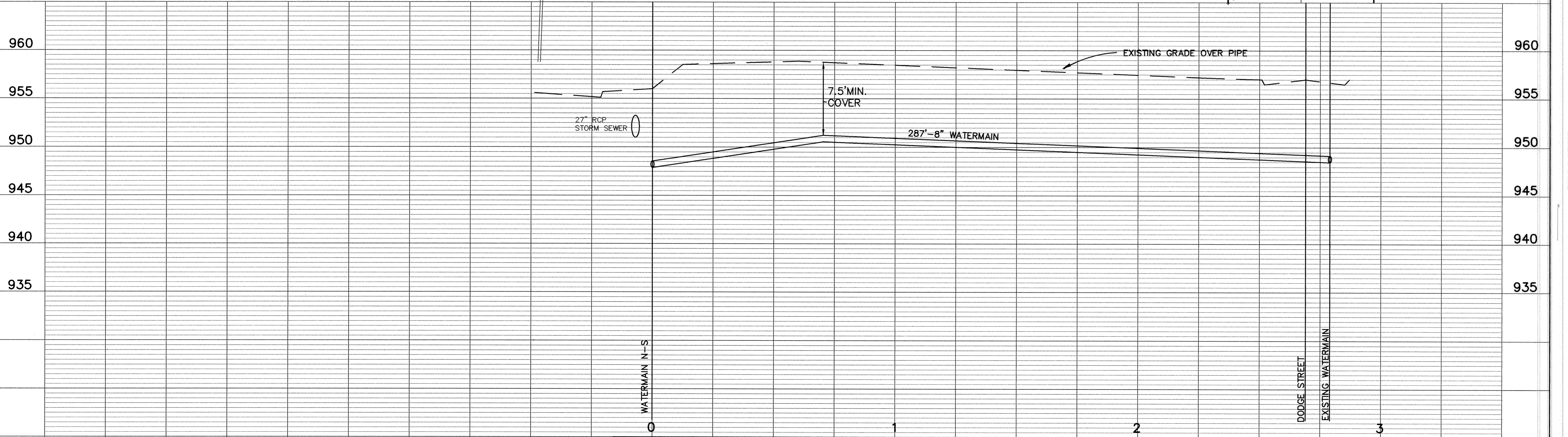
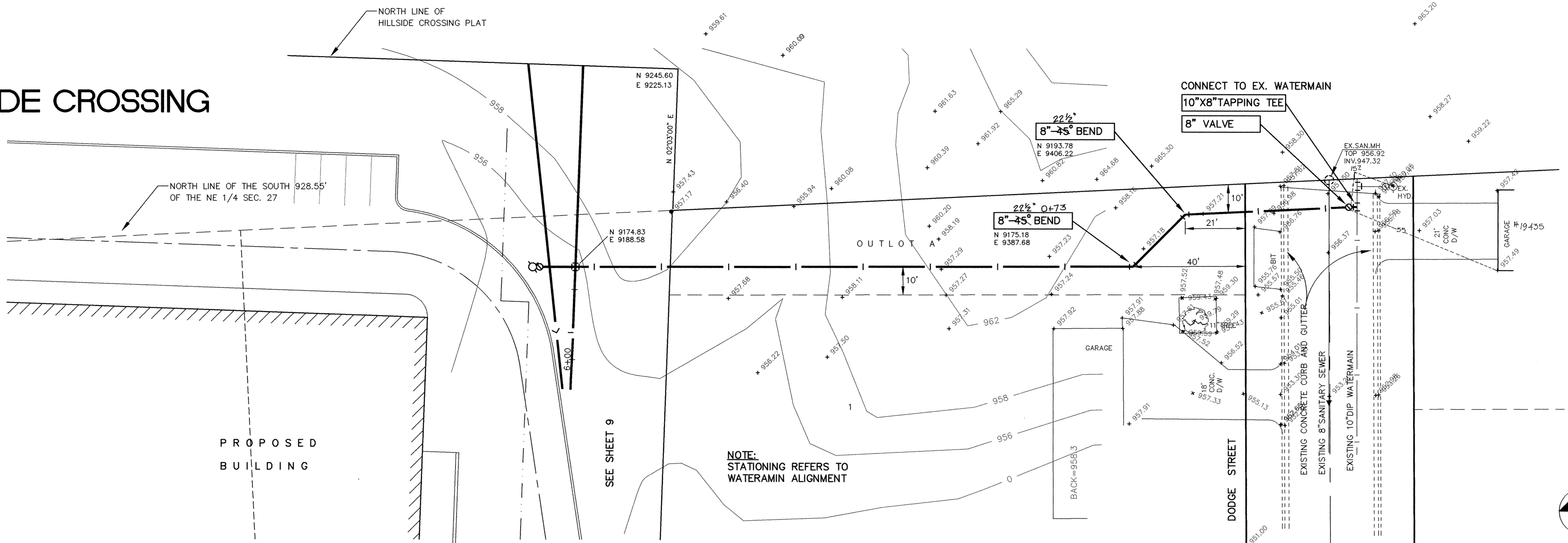


SAFCO PRODUCTS • NEW HOPE, MINNESOTA  
REVISIONS LISTED ON SHEET 08 230-226  
SAFCO PRODUCTS • NEW HOPE, MINNESOTA  
REVISIONS LISTED ON SHEET 08 230-226  
SAFCO PRODUCTS • NEW HOPE, MINNESOTA  
REVISIONS LISTED ON SHEET 08 230-226  
SAFCO PRODUCTS • NEW HOPE, MINNESOTA  
REVISIONS LISTED ON SHEET 08 230-226

# HILLSIDE CROSSING



ER226-15	I HEREBY CERTIFY THAT THIS PLAN, SPECIFICATION, OR REPORT WAS PREPARED BY ME OR UNDER MY DIRECT SUPERVISION AND THAT I AM A DULY REGISTERED PROFESSIONAL ENGINEER UNDER THE LAWS OF THE STATE OF MINNESOTA. <i>James J. Mauer</i> DATE 8/9/94 REG. NO. 15316		1326 ENERGY PARK DRIVE ST. PAUL, MINNESOTA 55108 (612) 644-4389  9800 SHELARD PARKWAY MINNEAPOLIS, MINNESOTA 55441 (612) 546-0432	DATE DESCRIPTION DESIGNED CHECKED DRAWN GRAPHIC SCALE 0 20 VERT. 5	CITY OF ELK RIVER SANITARY SEWER, STORM SEWER AND WATERMAIN HILLSIDE CROSSING <b>RECORD PLAN</b> APRIL 1995
				REVISIONS	DATE AUG 1994 SHEET 10 OF 12 SHEETS PROJECT NO. 230-226