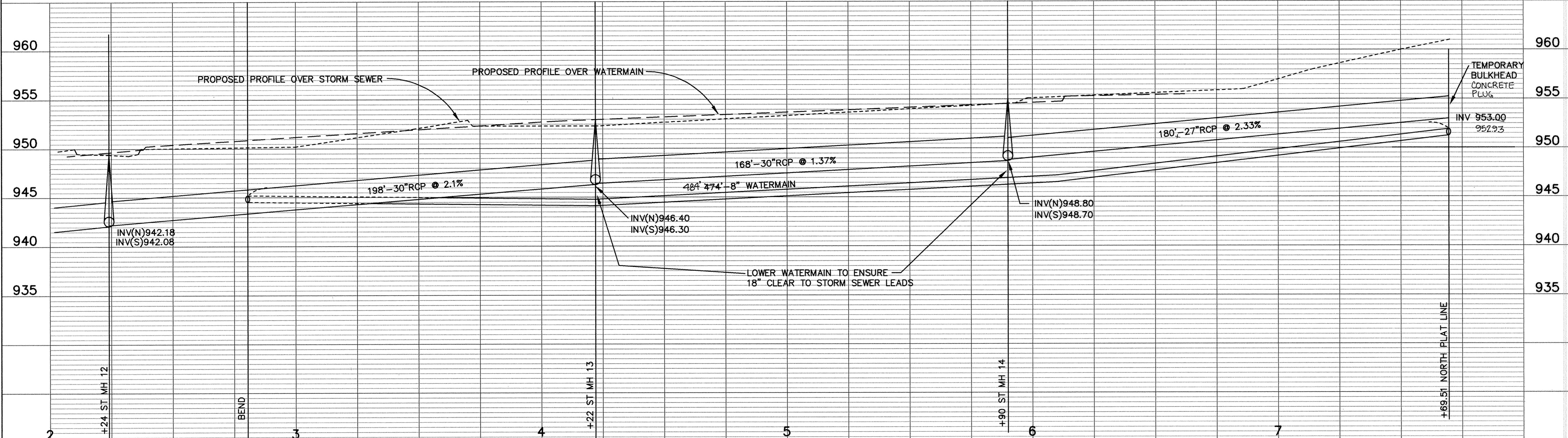
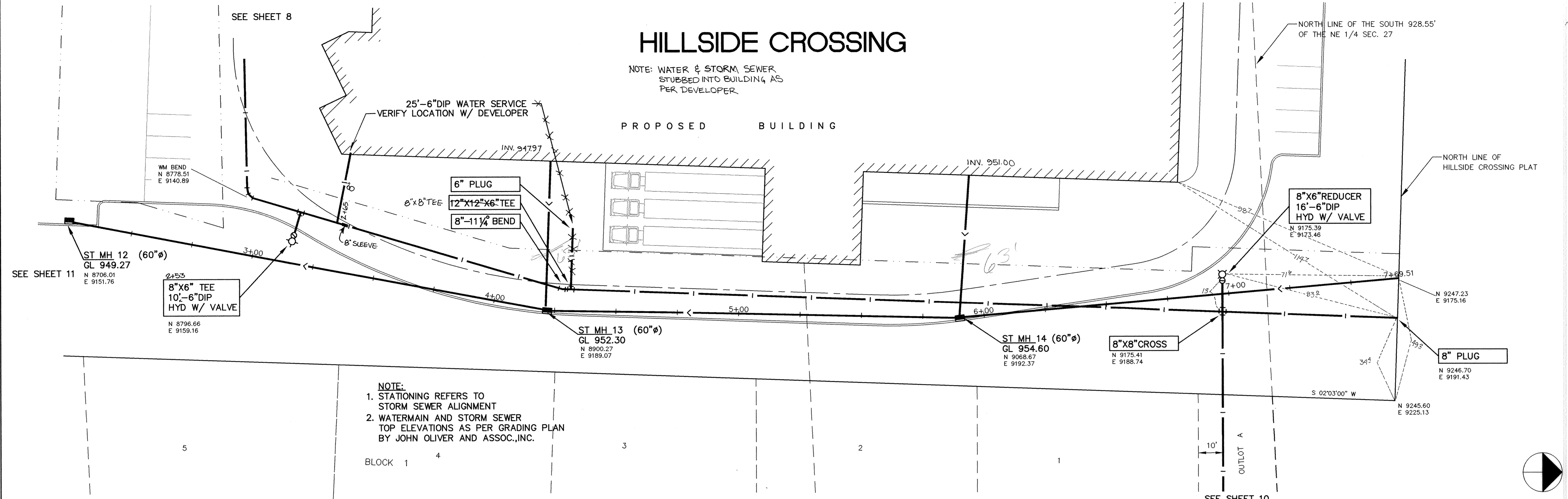


# HILLSIDE CROSSING

NOTE: WATER & STORM SEWER STUBBED INTO BUILDING AS PER DEVELOPER.

PROPOSED BUILDING



DATE	DESCRIPTION	DESIGNED	CHECKED	DRAWN	GRAPHIC SCALE	VERT.
8/9/94					0 20	0 5

I HEREBY CERTIFY THAT THIS PLAN, SPECIFICATION, OR REPORT WAS PREPARED BY ME OR UNDER MY DIRECT SUPERVISION AND THAT I AM A DULY REGISTERED PROFESSIONAL ENGINEER UNDER THE LAWS OF THE STATE OF MINNESOTA. <i>Tom Mauer</i> DATE 8/9/94 REG. NO. 15316				1326 ENERGY PARK DRIVE ST. PAUL, MINNESOTA 55108 (612) 644-4389  9800 SHELARD PARKWAY MINNEAPOLIS, MINNESOTA 55441 (612) 546-0432	CITY OF ELK RIVER SANITARY SEWER, STORM SEWER AND WATERMAIN HILLSIDE CROSSING <b>RECORD PLAN</b> APRIL 1995
DATE	AUG 1994	SHEET	9 OF 12 SHEETS	PROJECT NO.	230-226