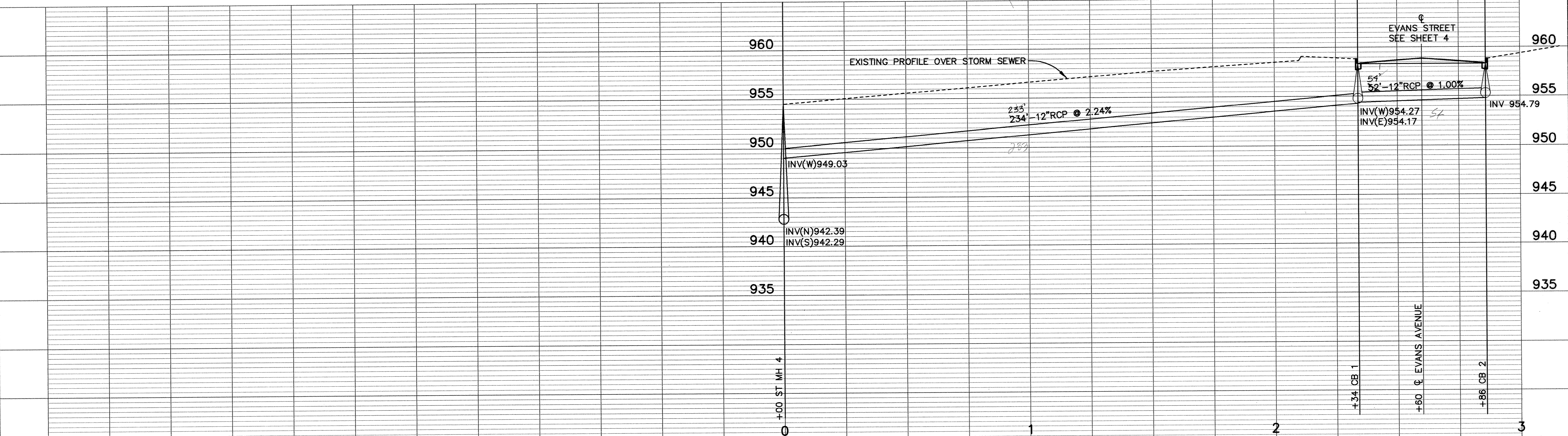
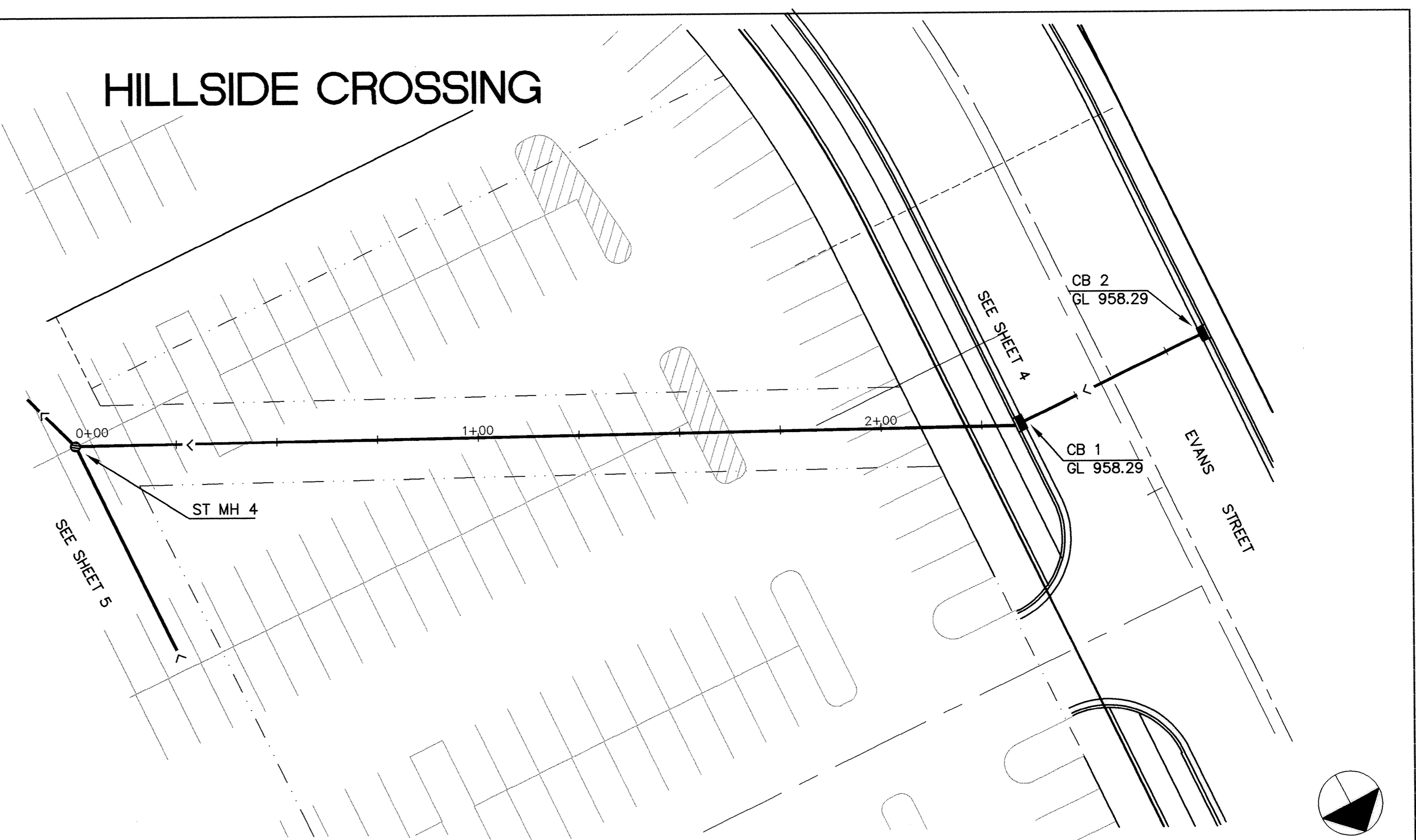


SAFCO PRODUCTS • NEW HOPK, MINNESOTA
PROJECT NUMBER 6592
REVISIONS OF THIS DRAWING
SAFCO PRODUCTS • NEW HOPK, MINNESOTA
PROJECT NUMBER 6592
REVISIONS OF THIS DRAWING
SAFCO PRODUCTS • NEW HOPK, MINNESOTA
PROJECT NUMBER 6592
REVISIONS OF THIS DRAWING

HILLSIDE CROSSING



I HEREBY CERTIFY THAT THIS PLAN, SPECIFICATION, OR REPORT WAS PREPARED BY ME OR UNDER MY DIRECT SUPERVISION AND THAT I AM A DULY REGISTERED PROFESSIONAL ENGINEER UNDER THE LAWS OF THE STATE OF MINNESOTA. <i>Levy Mauer</i> DATE <u>8/9/94</u> REG. NO. <u>15,314</u>		1326 ENERGY PARK DRIVE ST. PAUL, MINNESOTA 55108 (612) 644-4389 9800 SHELARD PARKWAY MINNEAPOLIS, MINNESOTA 55441 (612) 546-0432	DATE _____	DESCRIPTION _____	DESIGNED _____ CHECKED _____ DRAWN _____	CITY OF ELK RIVER SANITARY SEWER, STORM SEWER AND WATER MAIN HILLSIDE CROSSING RECORD PLAN APRIL 1995	DATE <u>AUG 1994</u> SHEET <u>7</u> OF <u>12</u> SHEETS PROJECT NO. <u>230-226</u>
			REVISIONS _____	GRAPHIC SCALE 0 20 0 VERT. 5			