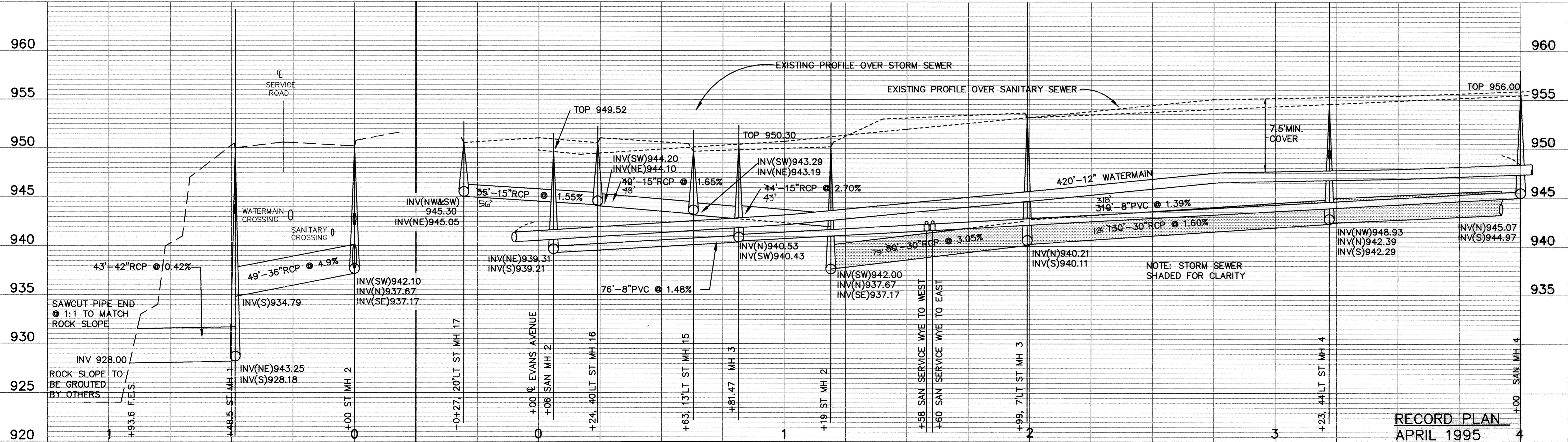
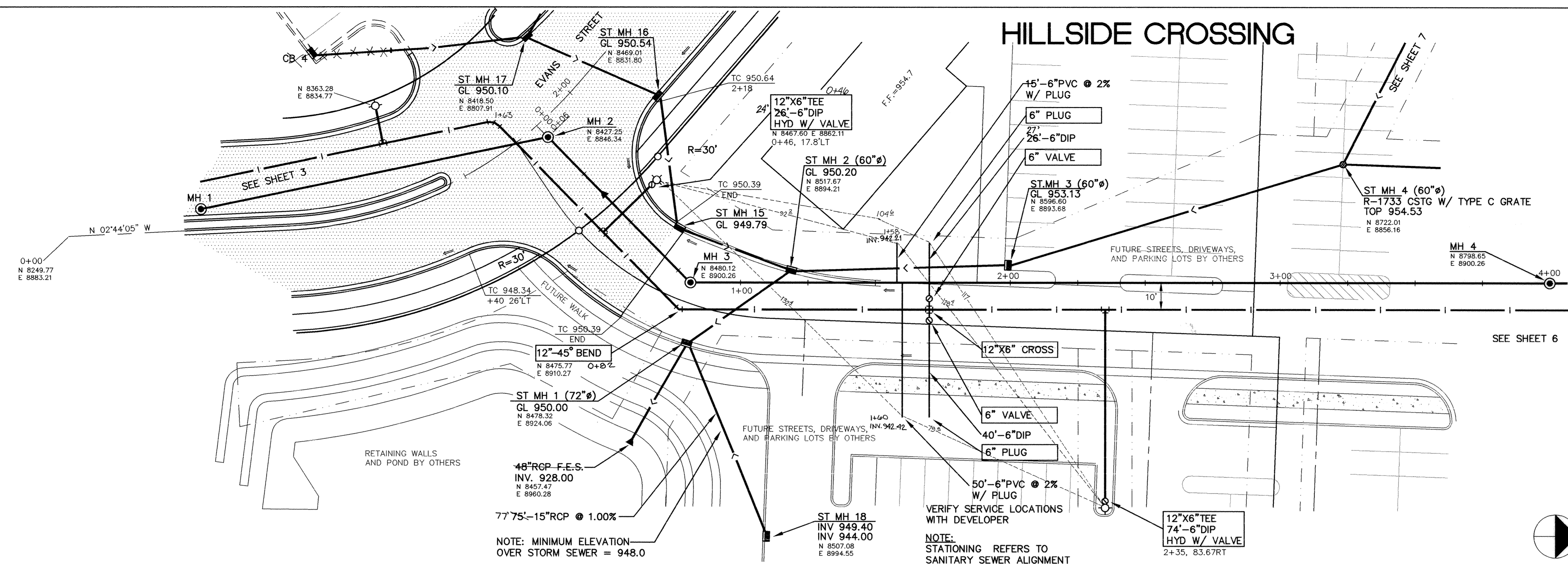


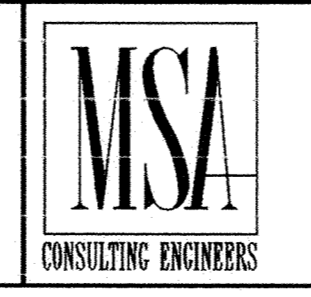
# HILLSIDE CROSSING



DATE	DESCRIPTION	DESIGNED	CHECKED	DRAWN
8/9/94	REG. NO. 15316			

I HEREBY CERTIFY THAT THIS PLAN, SPECIFICATION, OR REPORT WAS PREPARED BY ME OR UNDER MY DIRECT SUPERVISION AND THAT I AM A DULY REGISTERED PROFESSIONAL ENGINEER UNDER THE LAWS OF THE STATE OF MINNESOTA.

*Kevin M. Munn*  
DATE 8/9/94 REG. NO. 15316



1326 ENERGY PARK DRIVE  
ST. PAUL, MINNESOTA 55108  
(612) 644-4389

9800 SHELARD PARKWAY  
MINNEAPOLIS, MINNESOTA 55441  
(612) 546-0432

REVISIONS	DATE	DESCRIPTION
1		

CITY OF ELK RIVER  
SANITARY SEWER, STORM SEWER AND WATERMAIN  
HILLSIDE CROSSING

GRAPHIC SCALE  
0 20  
VERT. 5

DATE AUG 1994 SHEET 5 OF 12 SHEETS PROJECT NO. 230-226