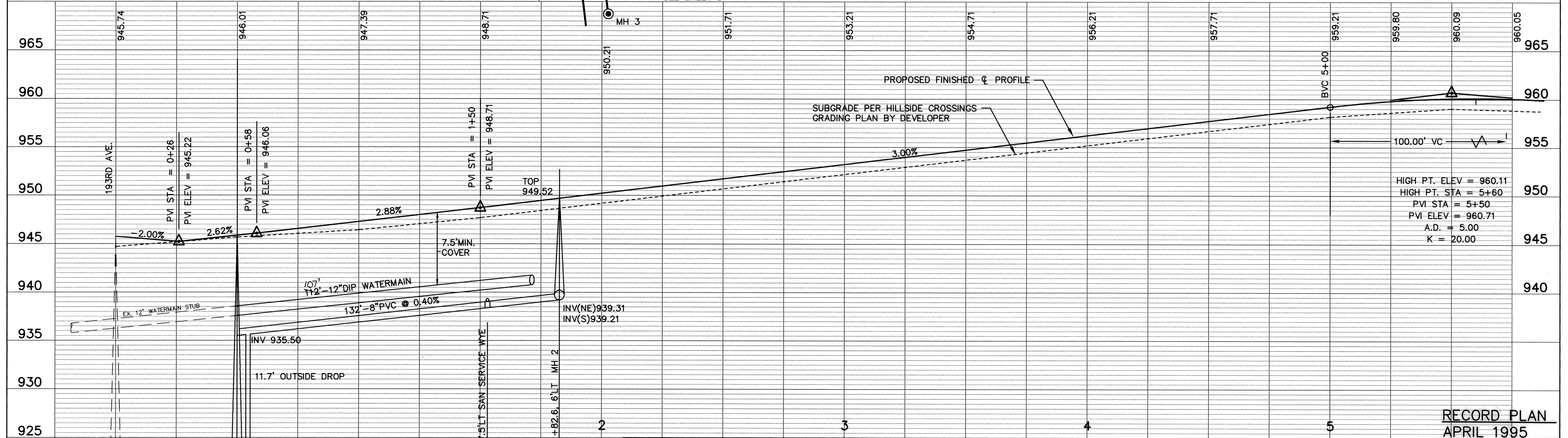
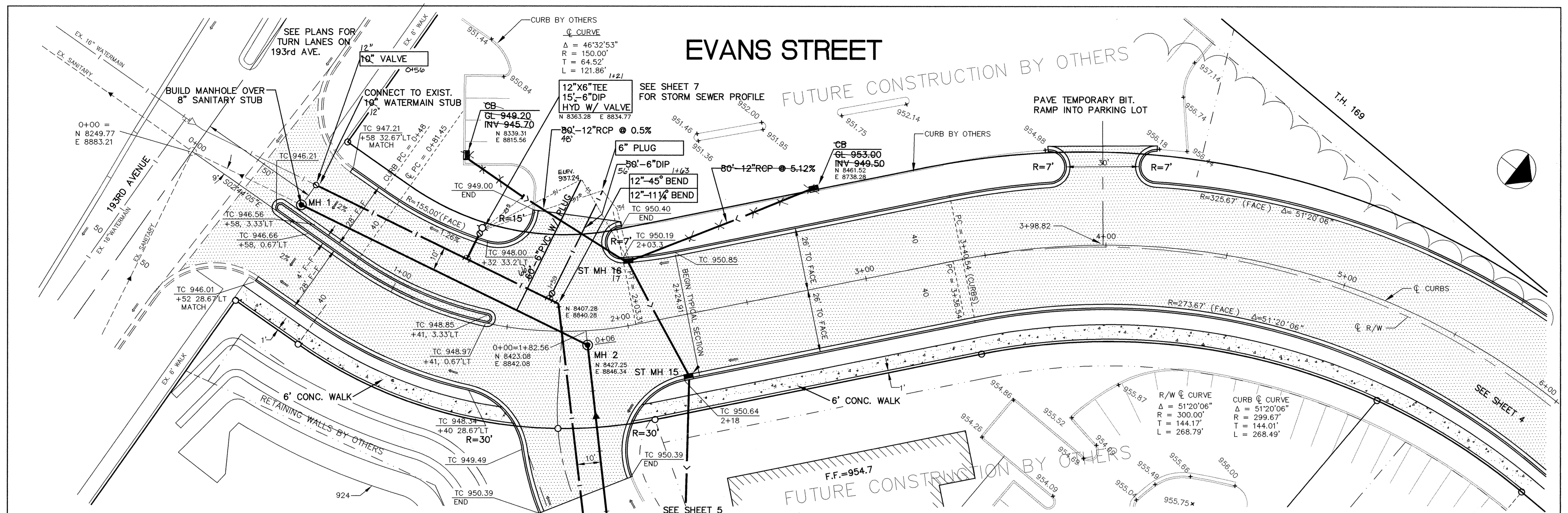


EVANS STREET



DATE AUG 1994 SHEET 3 OF 12 SHEETS PROJECT NO. 230-226

REVISIONS

NO.	DATE	DESCRIPTION	DESIGNED	CHECKED	DRAWN
1					
2					
3					
4					
5					

GRAPHIC SCALES

0 HOR. 20

0 VERT. 5

CITY OF ELK RIVER
STREET CONSTRUCTION
EVANS STREET

0+00 TO 5+50

1326 ENERGY PARK DRIVE
ST. PAUL, MINNESOTA 55108
(612) 644-4389

9800 SHELARD PARKWAY
MINNEAPOLIS, MINNESOTA 55441
(612) 546-0432

MSA
CONSULTING ENGINEERS

I HEREBY CERTIFY THAT THIS PLAN, SPECIFICATION, OR REPORT WAS PREPARED BY ME OR UNDER MY DIRECT SUPERVISION AND THAT I AM A DULY REGISTERED PROFESSIONAL ENGINEER UNDER THE LAWS OF THE STATE OF MINNESOTA.

Kevin Mauer
DATE 8/9/94 REG. NO. 15316

RECORD PLAN
APRIL 1995