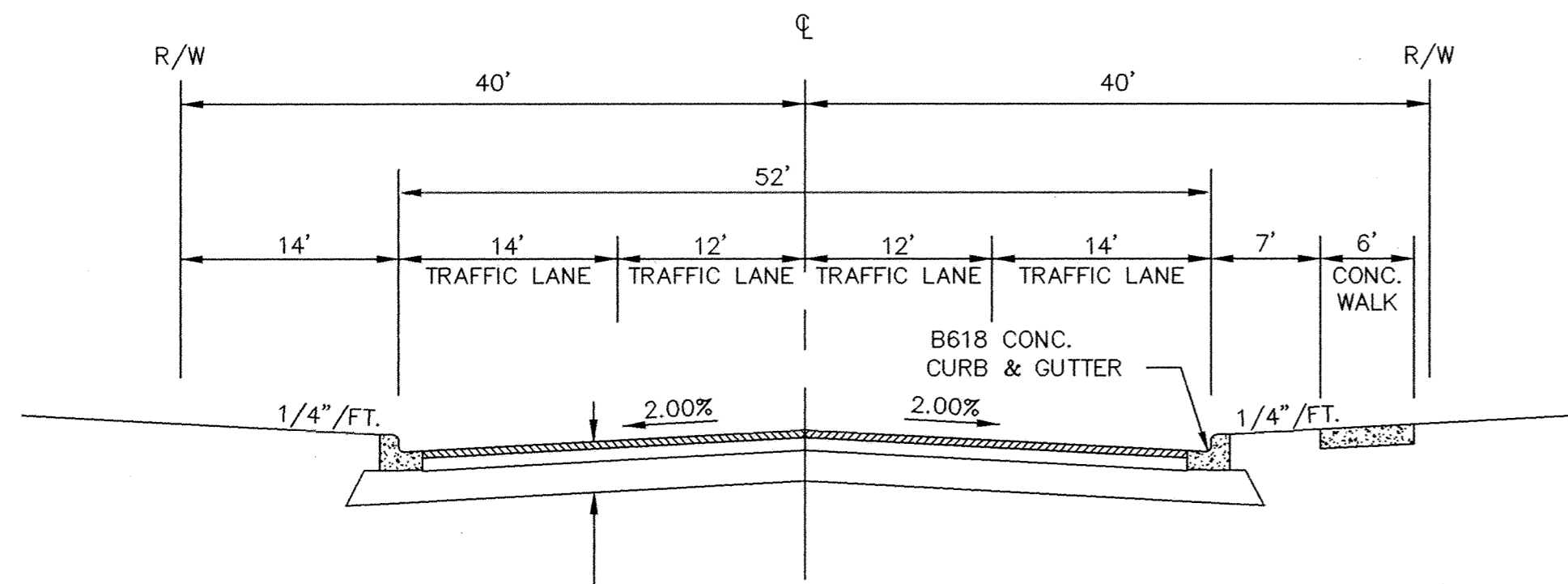
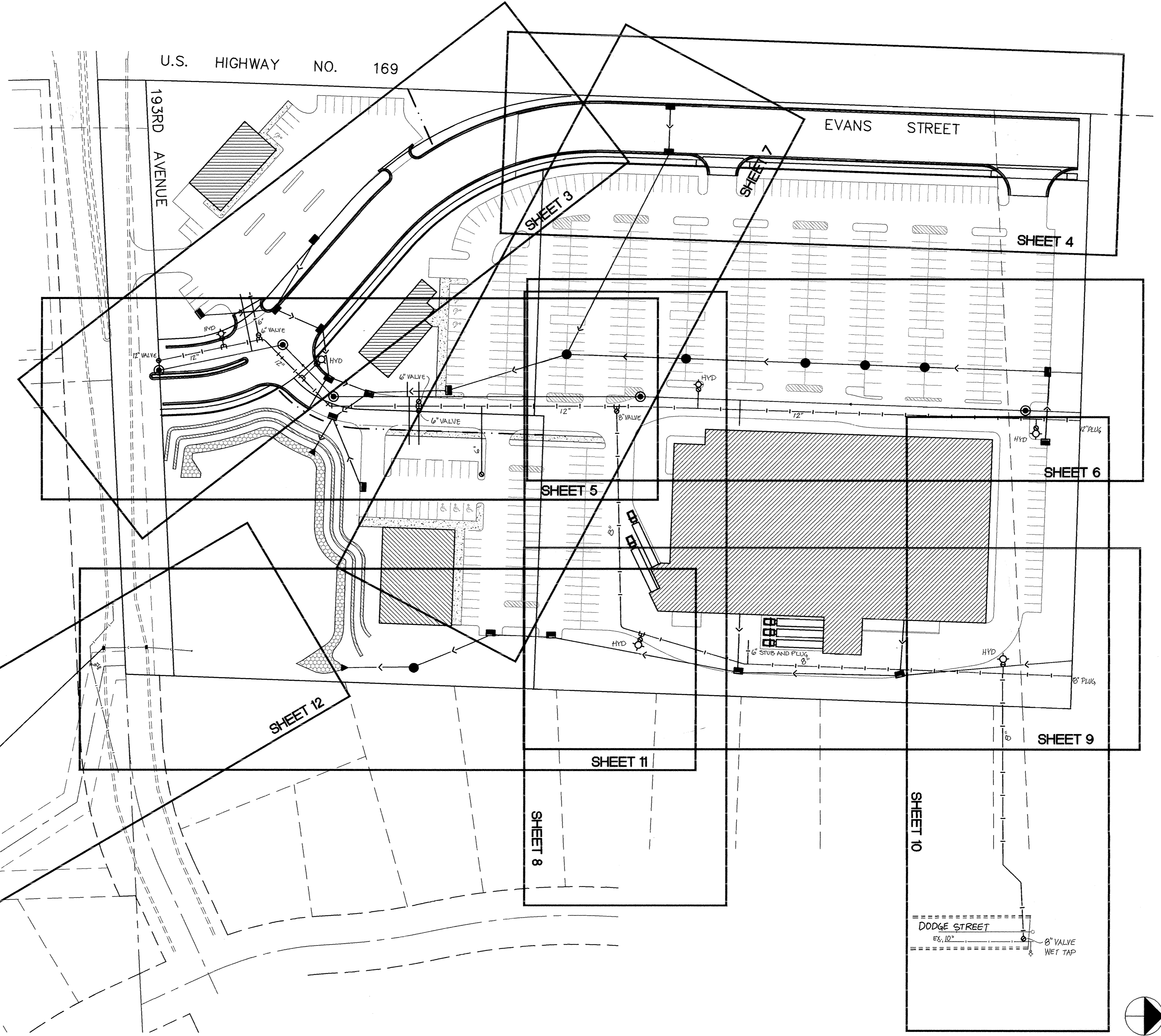


HILLSIDE CROSSING

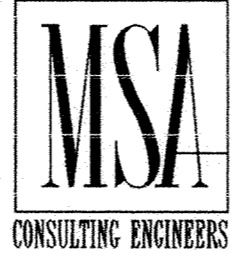


1" 2331 TYPE 41A BIT. WEAR COURSE
 2" 2331 TYPE 31B BIT. BASE COURSE
 8" CLASS 5 AGGREGATE BASE

TYPICAL STREET SECTION
 EVANS STREET

I HEREBY CERTIFY THAT THIS PLAN, SPECIFICATION, OR REPORT WAS PREPARED BY ME OR UNDER MY DIRECT SUPERVISION AND THAT I AM A DULY REGISTERED PROFESSIONAL ENGINEER UNDER THE LAWS OF THE STATE OF MINNESOTA.

John J. Mauer
 DATE 8/9/94 REG. NO. 15316



1326 ENERGY PARK DRIVE
 ST. PAUL, MINNESOTA 55108
 (612) 644-4389

9800 SHELARD PARKWAY
 MINNEAPOLIS, MINNESOTA 55441
 (612) 546-0432

DATE	DESCRIPTION	DESIGNED
		CHECKED
		DRAWN

GRAPHIC SCALE
 0 5 10
 0 VERT. 5

CITY OF ELK RIVER
 STREETS AND UTILITIES
 HILLSIDE CROSSING

RECORD PLAN
 APRIL 1995

DATE AUG 1994 SHEET 2 OF 12 SHEETS PROJECT NO. 230-226