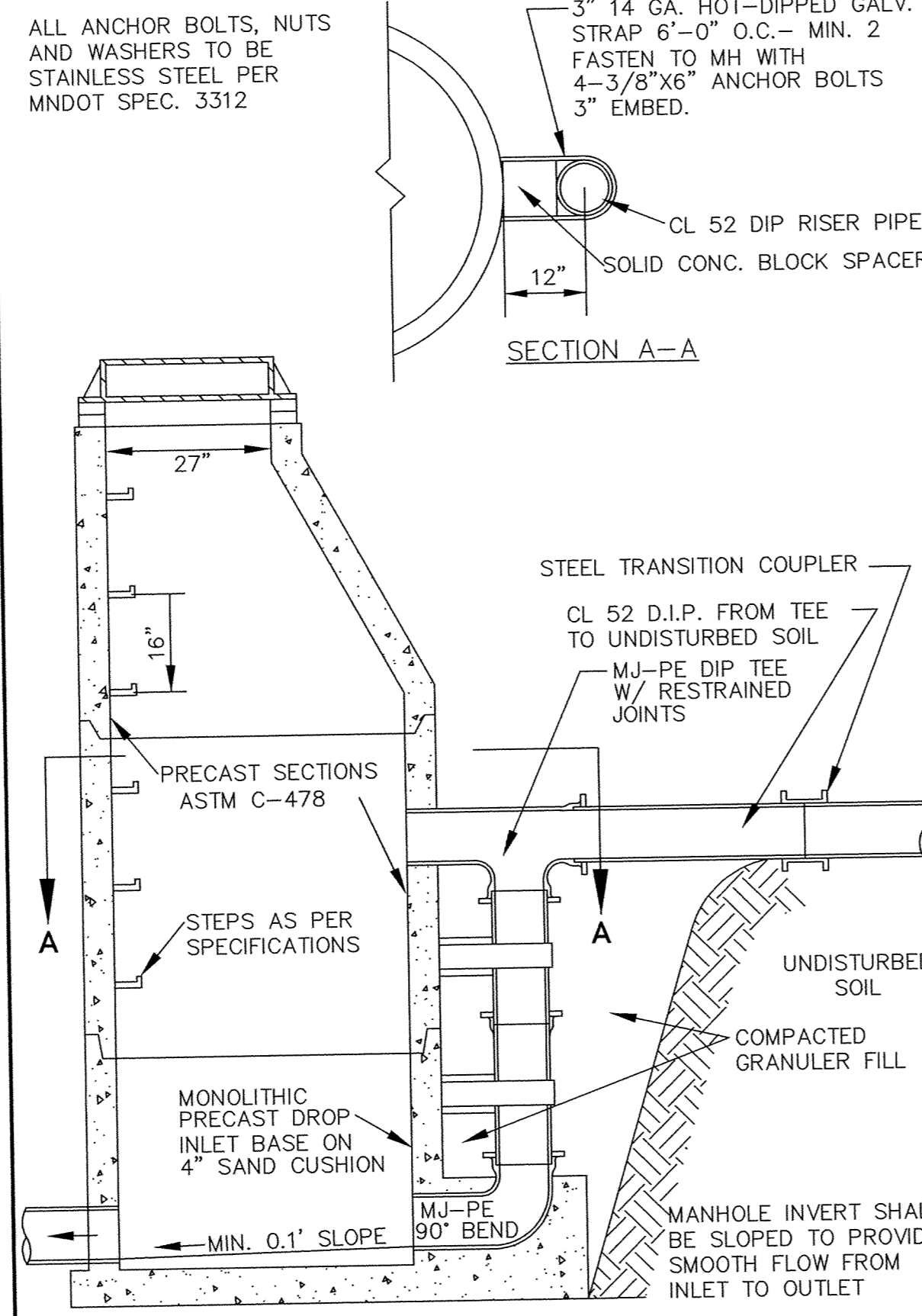
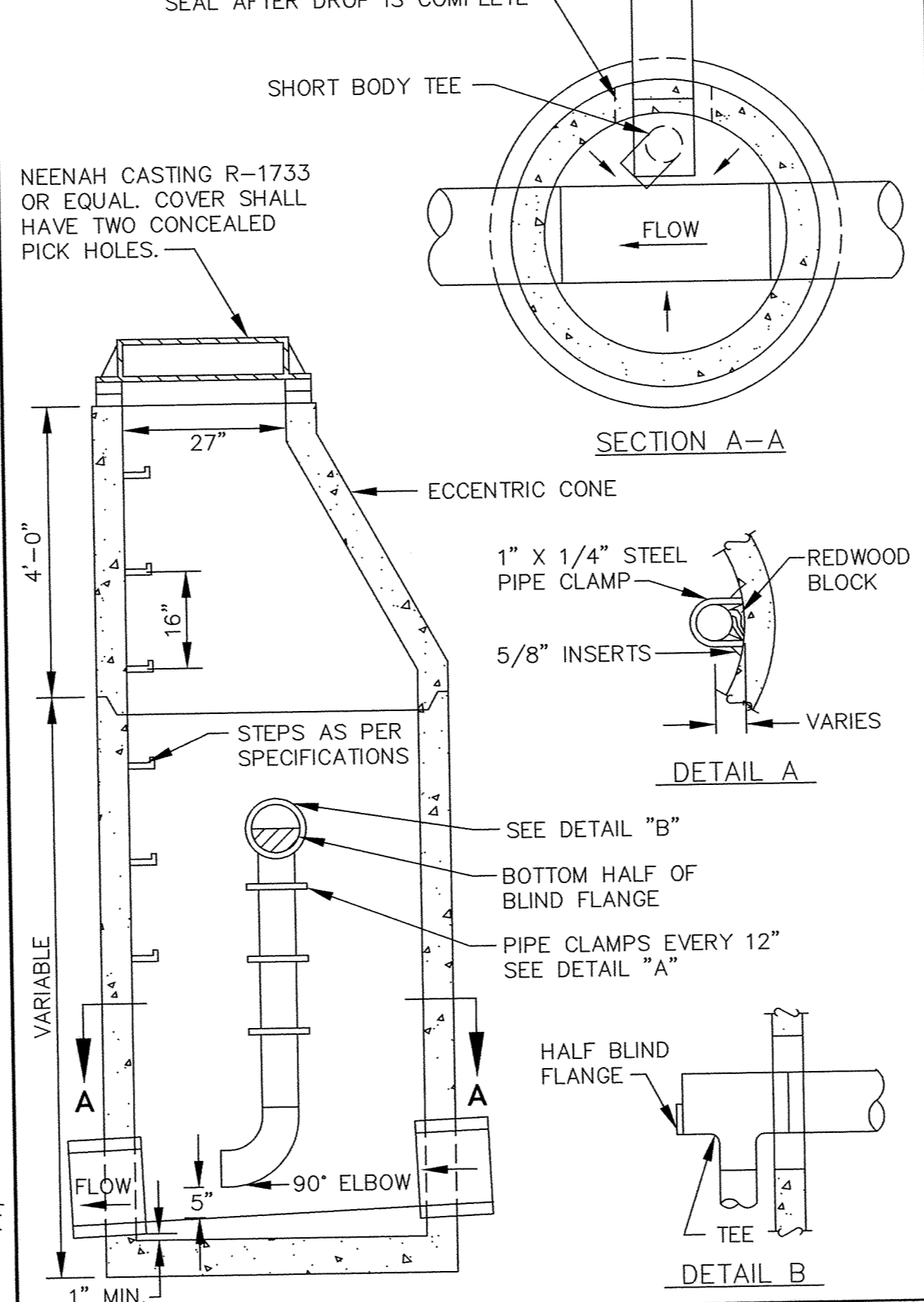


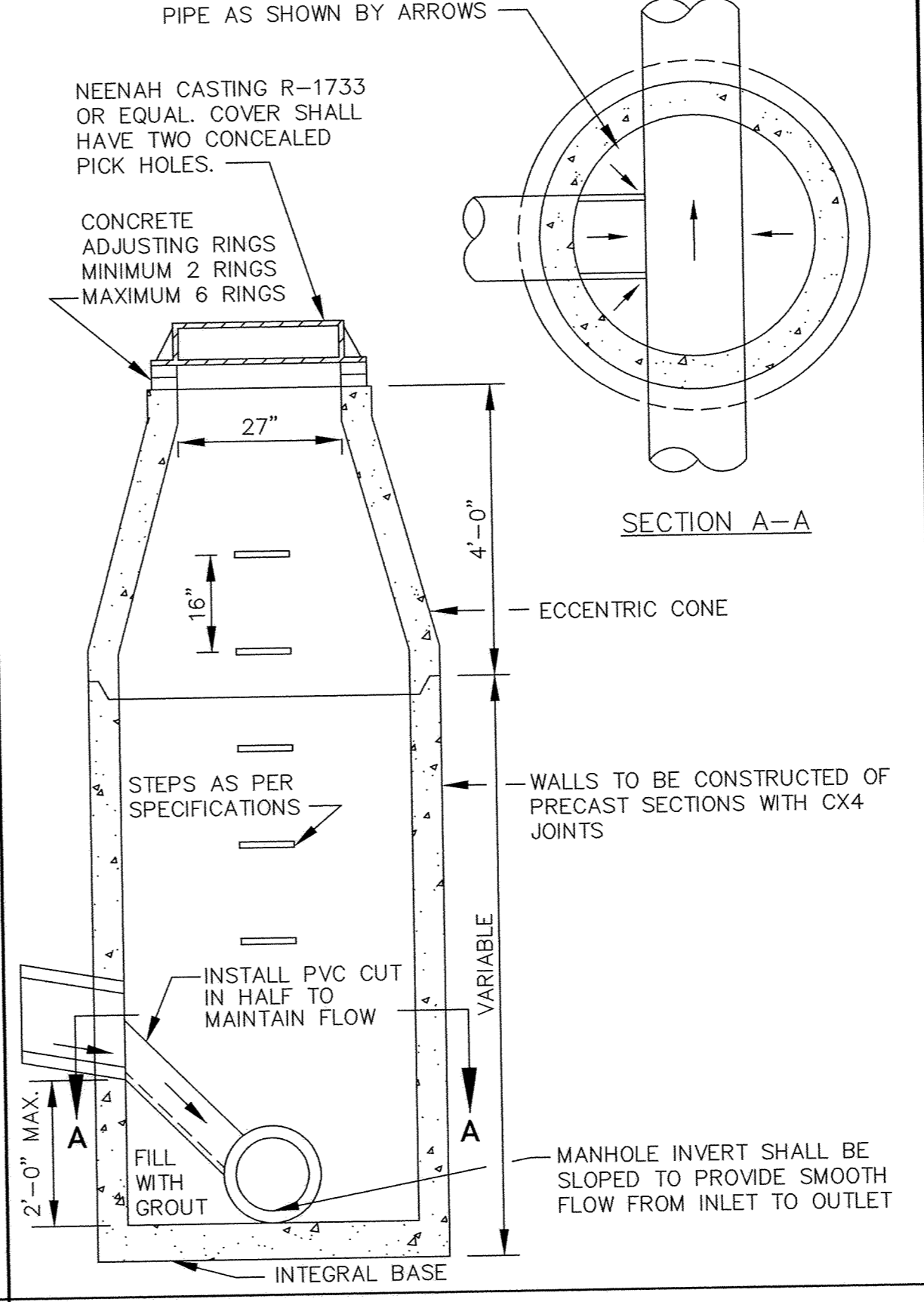
STANDARD AIR RELIEF MANHOLE



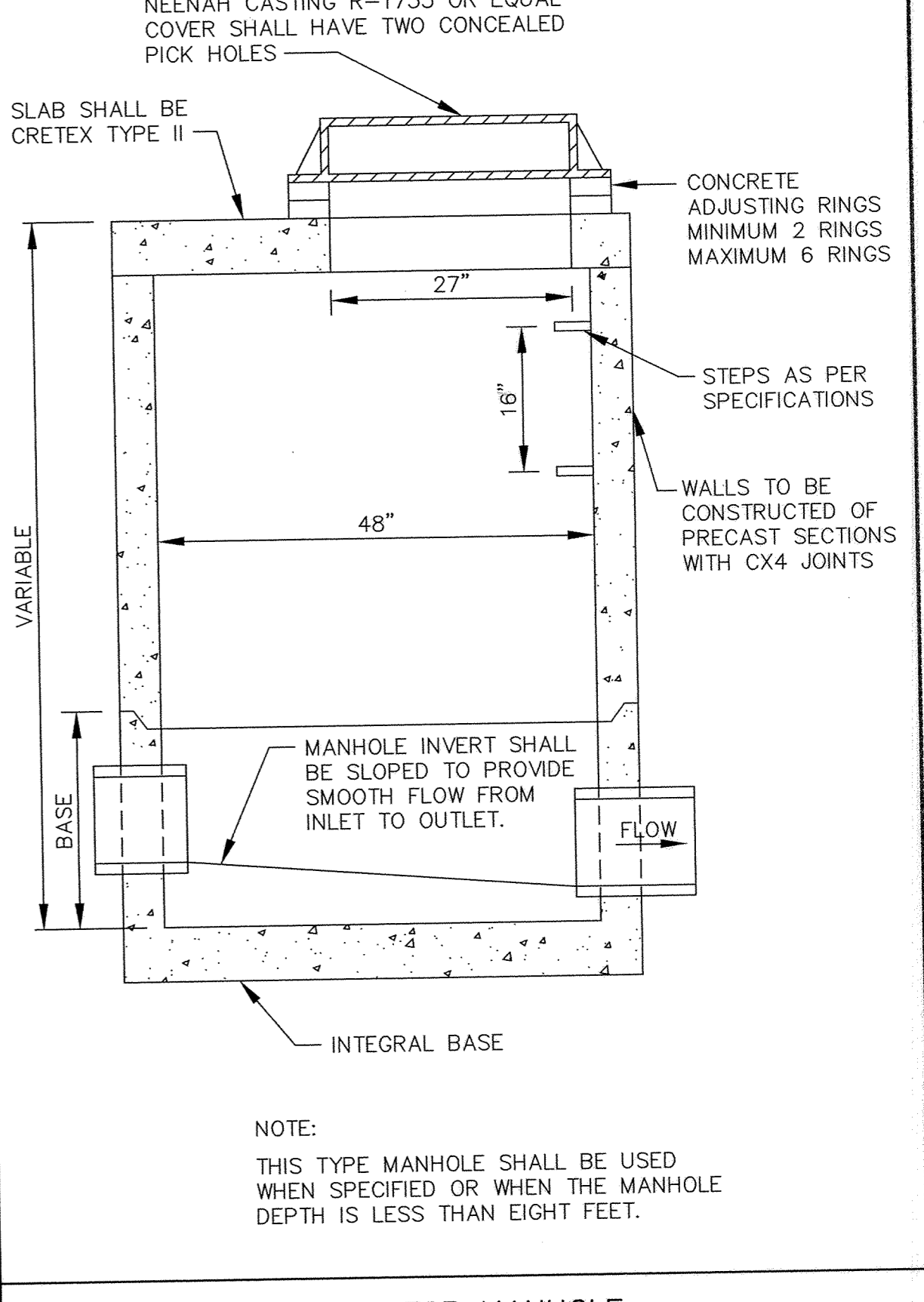
OUTSIDE DROP MANHOLE



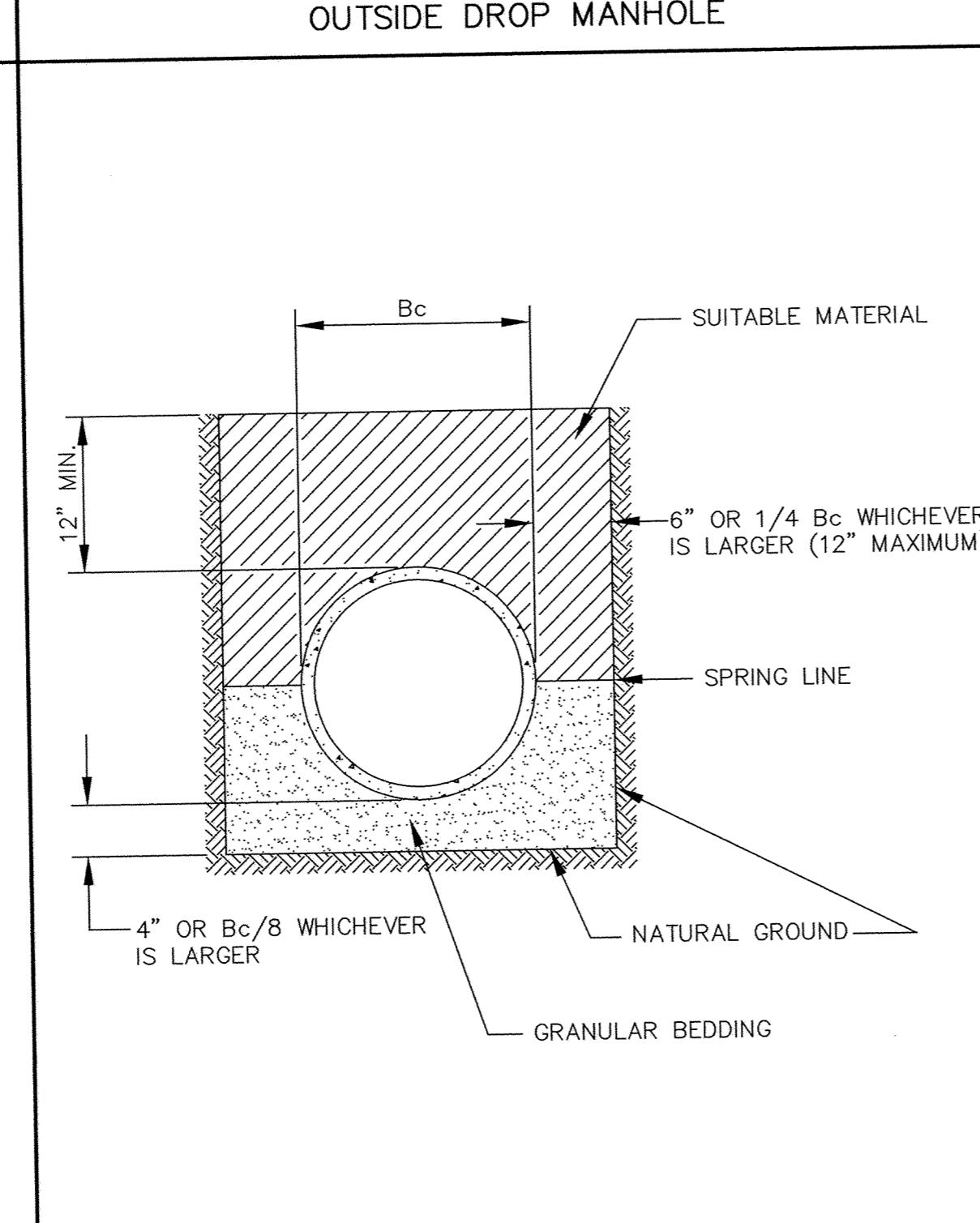
INSIDE DROP MANHOLE



INSIDE DROP MANHOLE (TWO FEET OR LESS)

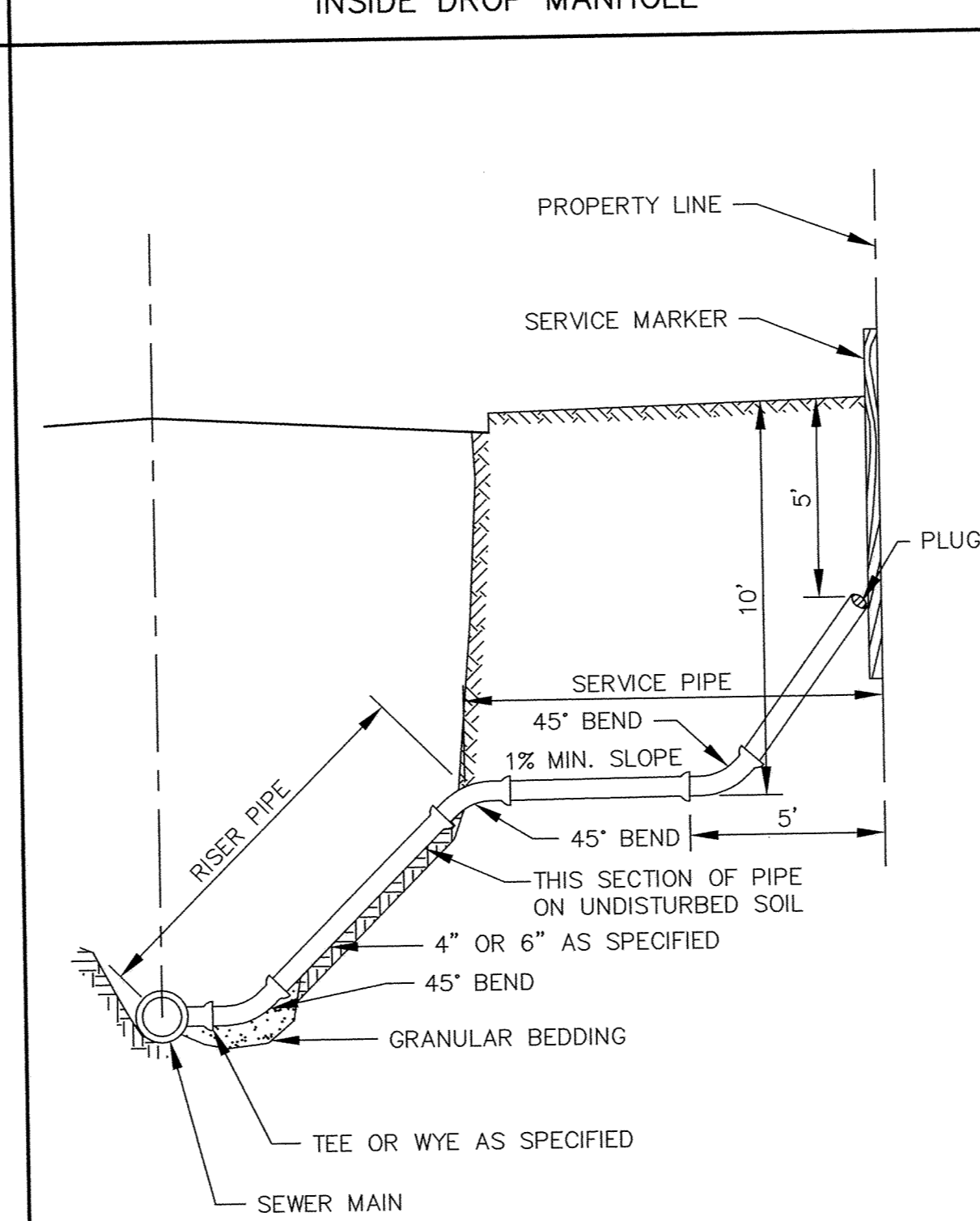


SLAB TOP MANHOLE

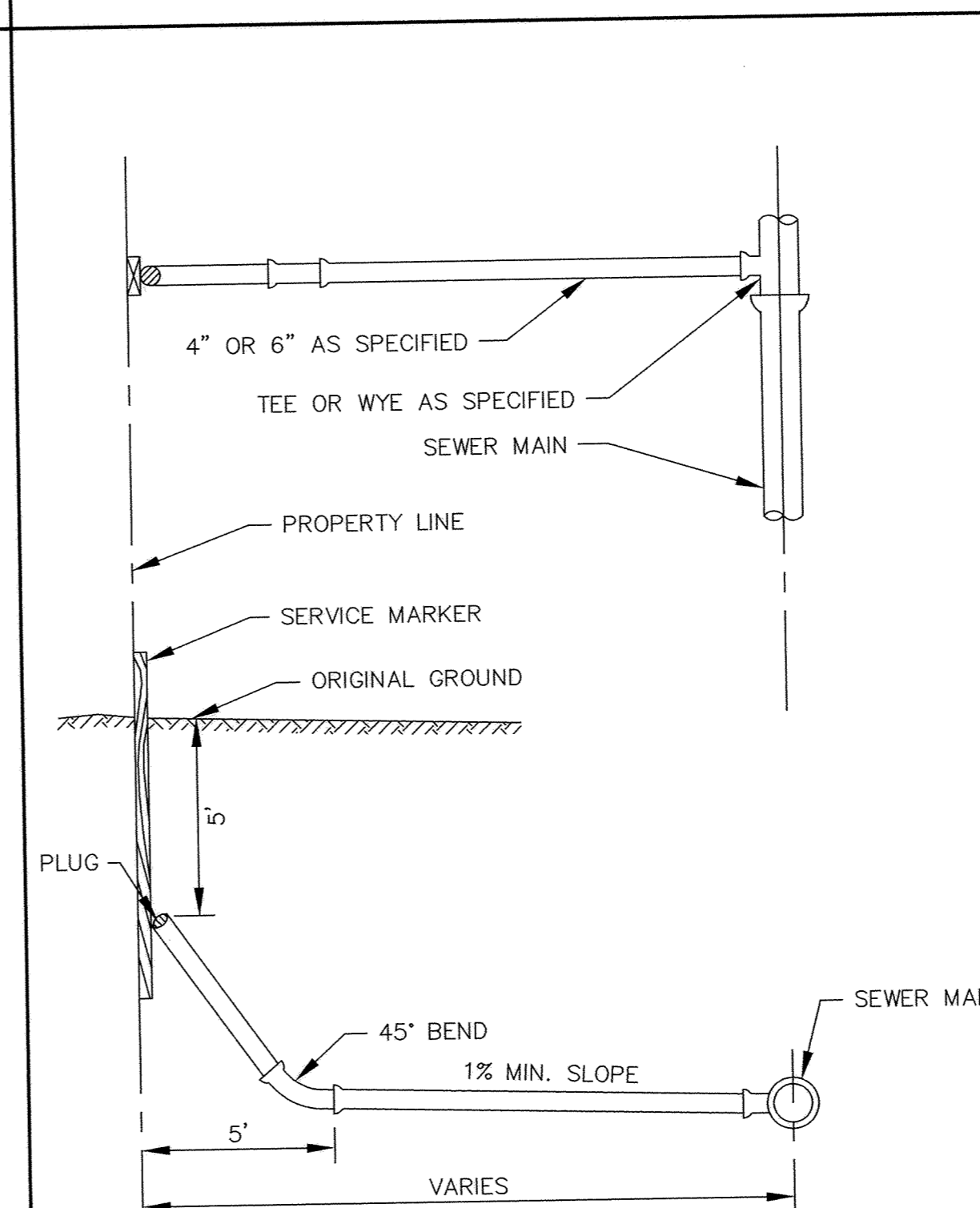


CLASS B PIPE BEDDING

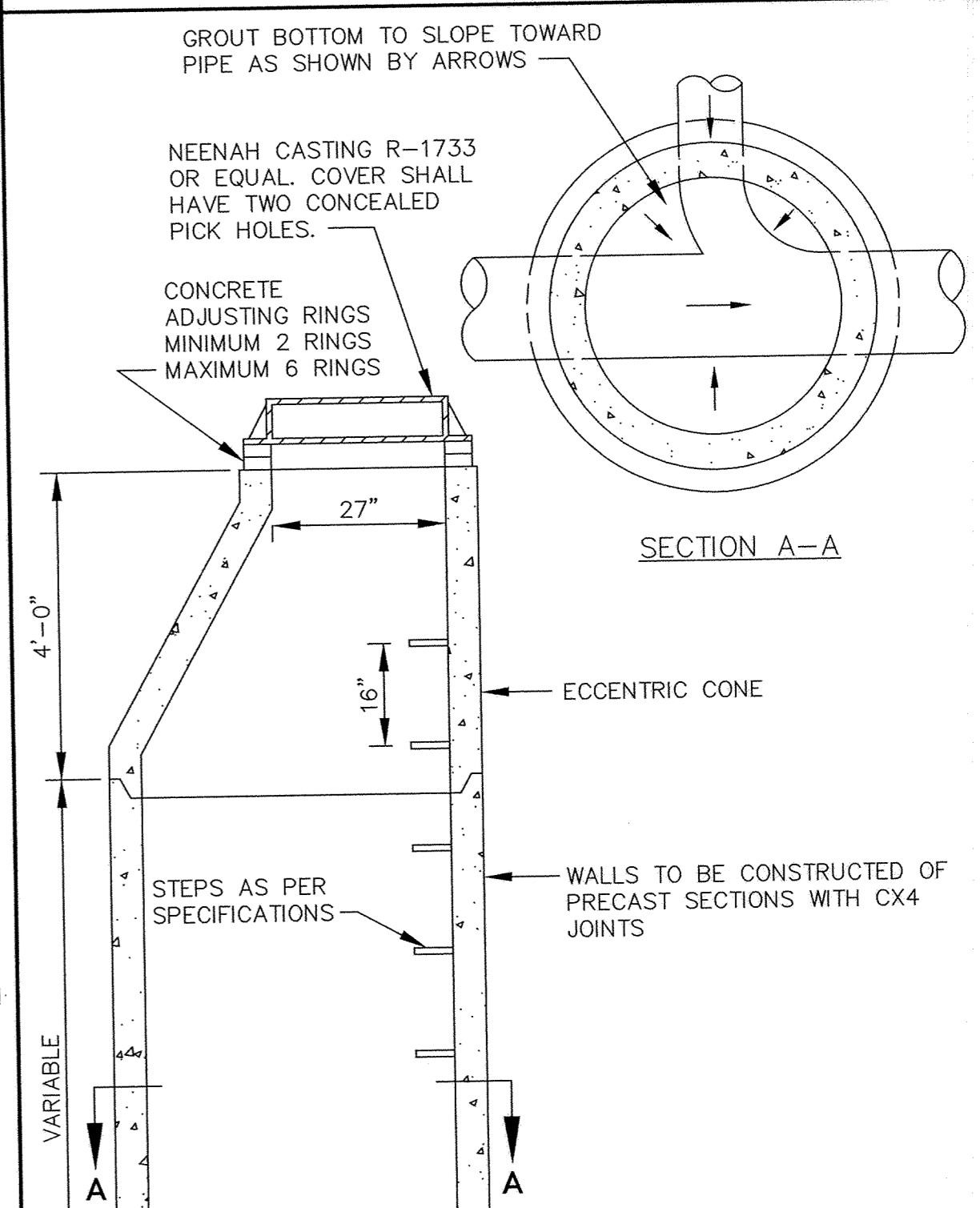
NOTE: ALL COSTS OF EXCAVATION BELOW GRADE AND PLACEMENT OF GRANULAR BEDDING SHALL BE INCLUDED IN THE BID PRICES FOR PIPE ITEMS.



SERVICE RISER SECTION



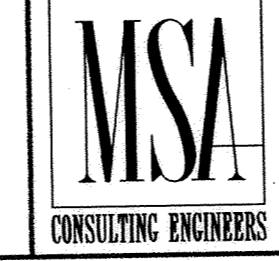
TYPICAL HOUSE SERVICE



STANDARD MANHOLE

RECORD PLAN
MARCH 1997

I HEREBY CERTIFY THAT THIS PLAN, SPECIFICATION, OR REPORT WAS PREPARED BY ME OR UNDER MY DIRECT SUPERVISION AND THAT I AM A DULY REGISTERED PROFESSIONAL ENGINEER UNDER THE LAWS OF THE STATE OF MINNESOTA.
Edward J. Mauer
DATE 4/15/96 REG. NO. 15346



1326 ENERGY PARK DRIVE
ST. PAUL, MINNESOTA 55108
(612) 644-4389

REVISIONS	DATE	DESCRIPTION	DESIGNED	SEE

DESIGNED	SEE
CHECKED	EV
DRAWN	EV
GRAPHIC SCALE	N/A
0 HORIZ.	N/A
0 VERT.	

CITY OF ELK RIVER	DATE APRIL 1996	SHEET 28 OF 31 SHEETS	PROJECT NO. 230-297
HILLSIDE CROSSING II			
SANITARY SEWER CONSTRUCTION DETAILS			

1185