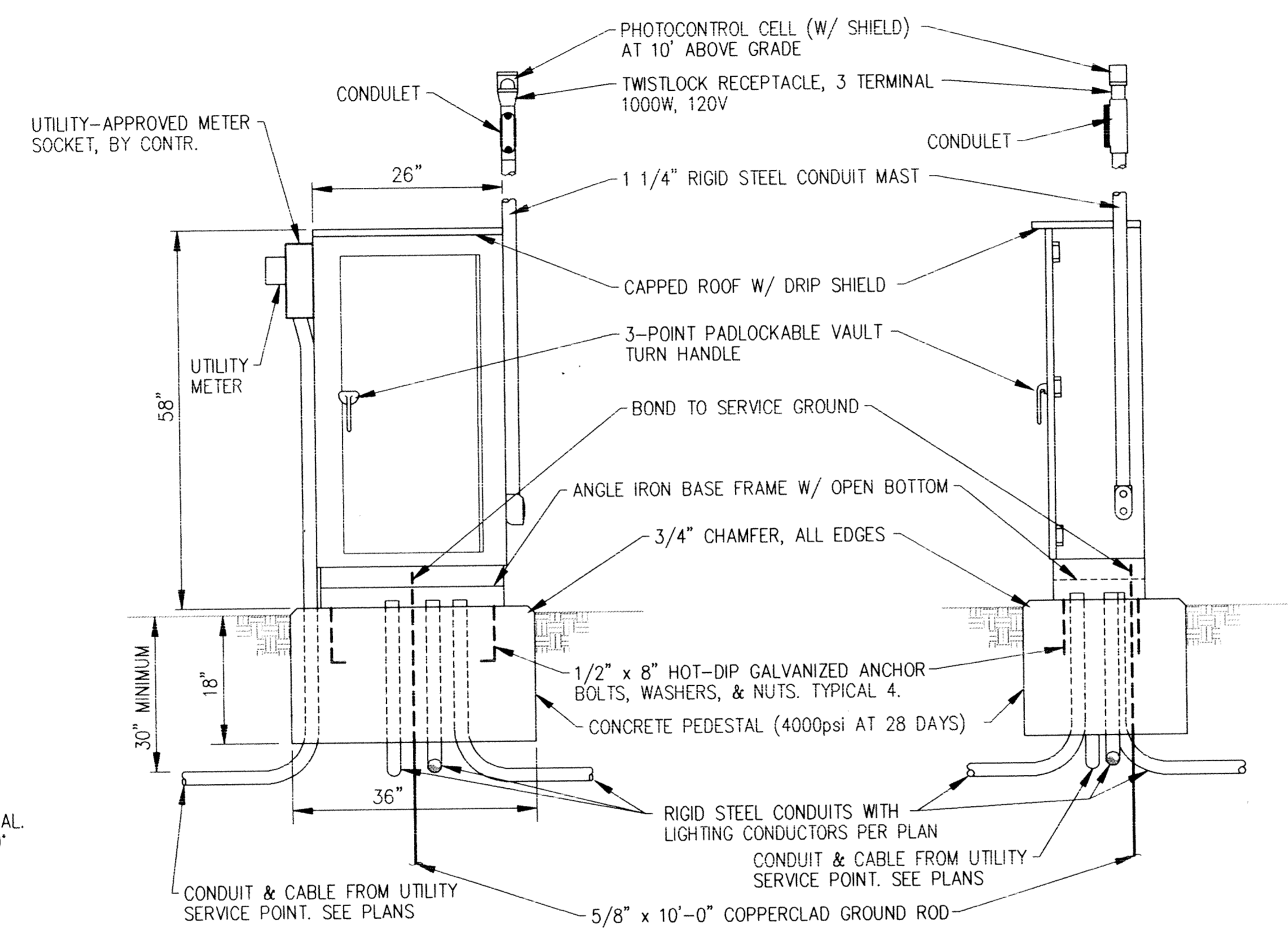
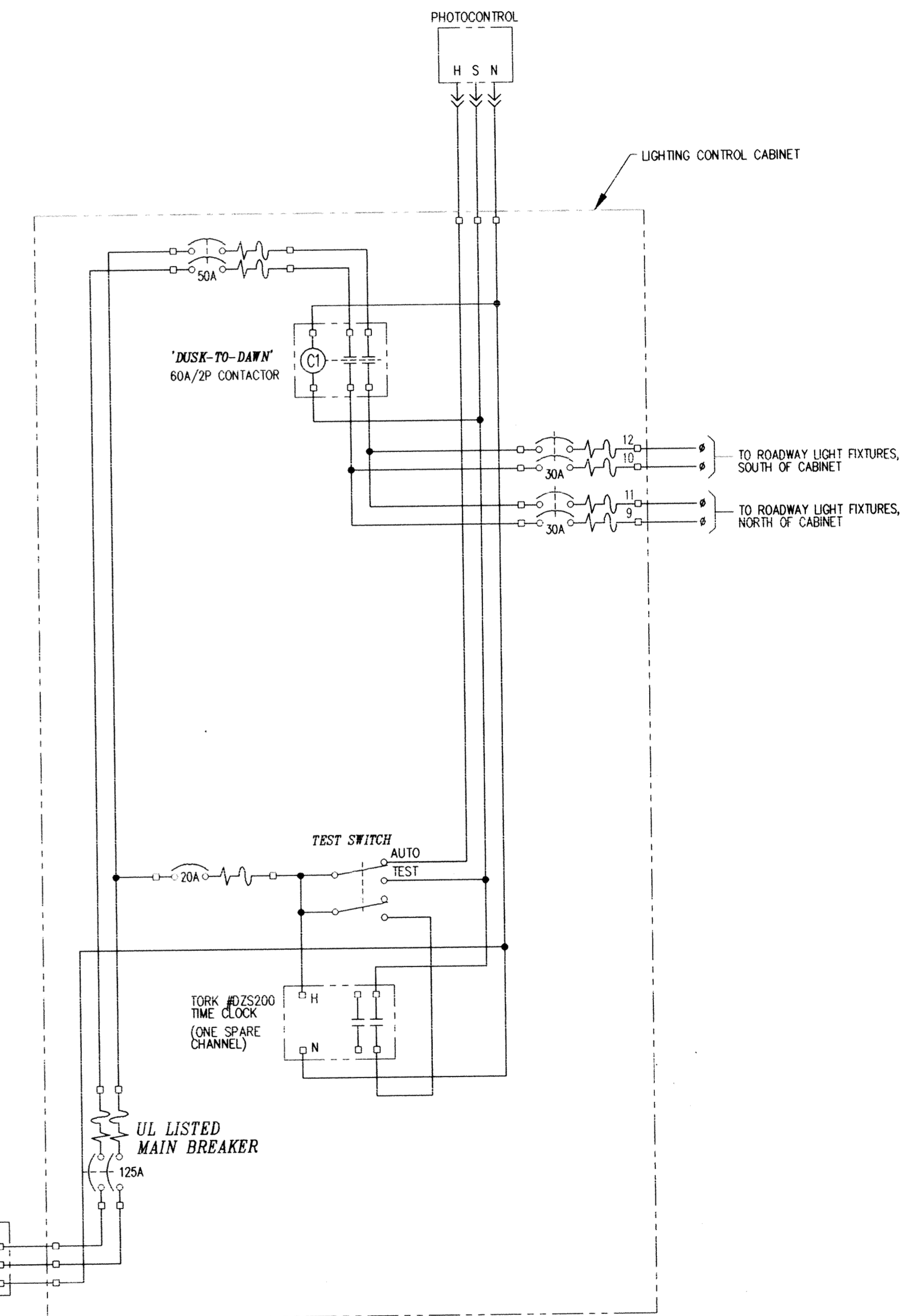


- CONCRETE BASE NOTES**
1. CONCRETE SHALL HAVE 6% AIR ENTRAINMENT AND A 28 DAY STRENGTH OF 4000 PSI.
  2. CONCRETE MIX SHALL BE #3Y43 CONFORMING TO MINNESOTA DEPARTMENT OF TRANSPORTATION (MN/DOT) SPECIFICATION 2461
  3. REINFORCING STEEL SHALL BE ASTM A615, GRADE 60, NEW BILLET, INTERMEDIATE GRADE, DEFORMED W/ 60000 PSI YIELD STRENGTH.



**LIGHTING CONTROL CABINET ELEVATIONS**  
NO SCALE TYPICAL

- CONTROL CABINET NOTES**
1. CONTROL CABINET SHALL BE FABRICATED W/ 12 GAGE SHEET STEEL & BE IN CONFORMANCE W/ NEMA 3R CONSTRUCTION. SHEET STEEL SHALL BE PAINTED W/ TWO COATS OF RED OXIDE PRIMER & TWO COATS FINISH COATS OF DARK GREEN ENAMEL.
  2. CONSTRUCT PER NEC, UL 67, & UL 869 STANDARDS. CABINET SHALL HAVE FULL HEIGHT INNER DEAD-FRONT DOOR.
  3. CIRCUIT BREAKER SHALL HAVE 22KAIC RATING.
  4. AMERICAN MIDWEST POWER TYPE T1, STATES ELECTRIC TYPE T1, OR EQUAL.



**LIGHTING CONTROL CABINET SCHEMATIC**  
NO SCALE TYPICAL

**STREET LIGHTING FIXTURE & BASE DETAIL**  
NO SCALE

**RECORD PLAN**  
MARCH 1997

**CITY OF ELK RIVER**  
HILLSIDE CROSSING II  
ELECTRICAL DETAILS

This drawing was prepared by:  
**Kaeding & Associates, Inc.**  
7300 France Avenue South  
Suite 330  
Minneapolis, MN 55435  
Telephone: (612) 831-0317  
Fax: (612) 831-2179

I HEREBY CERTIFY THAT THIS PLAN, SPECIFICATION, OR REPORT WAS PREPARED BY ME OR UNDER MY DIRECT SUPERVISION AND THAT I AM A DULY REGISTERED PROFESSIONAL ENGINEER UNDER THE LAWS OF THE STATE OF MINNESOTA.

DATE 12 APR 96 REG. NO. 9955

1326 ENERGY PARK DRIVE  
ST. PAUL, MINNESOTA 55108  
(612) 644-4389

**MSA**  
CONSULTING ENGINEERS

REVISIONS	DATE	DESCRIPTION	DESIGNED PFK	CHECKED PFK	DRAWN CPM

GRAPHIC SCALE  
0 HORIZ.  
0 VERT.

DATE APR 1996 SHEET 27 OF 31 SHEETS PROJECT NO. 230-297-12