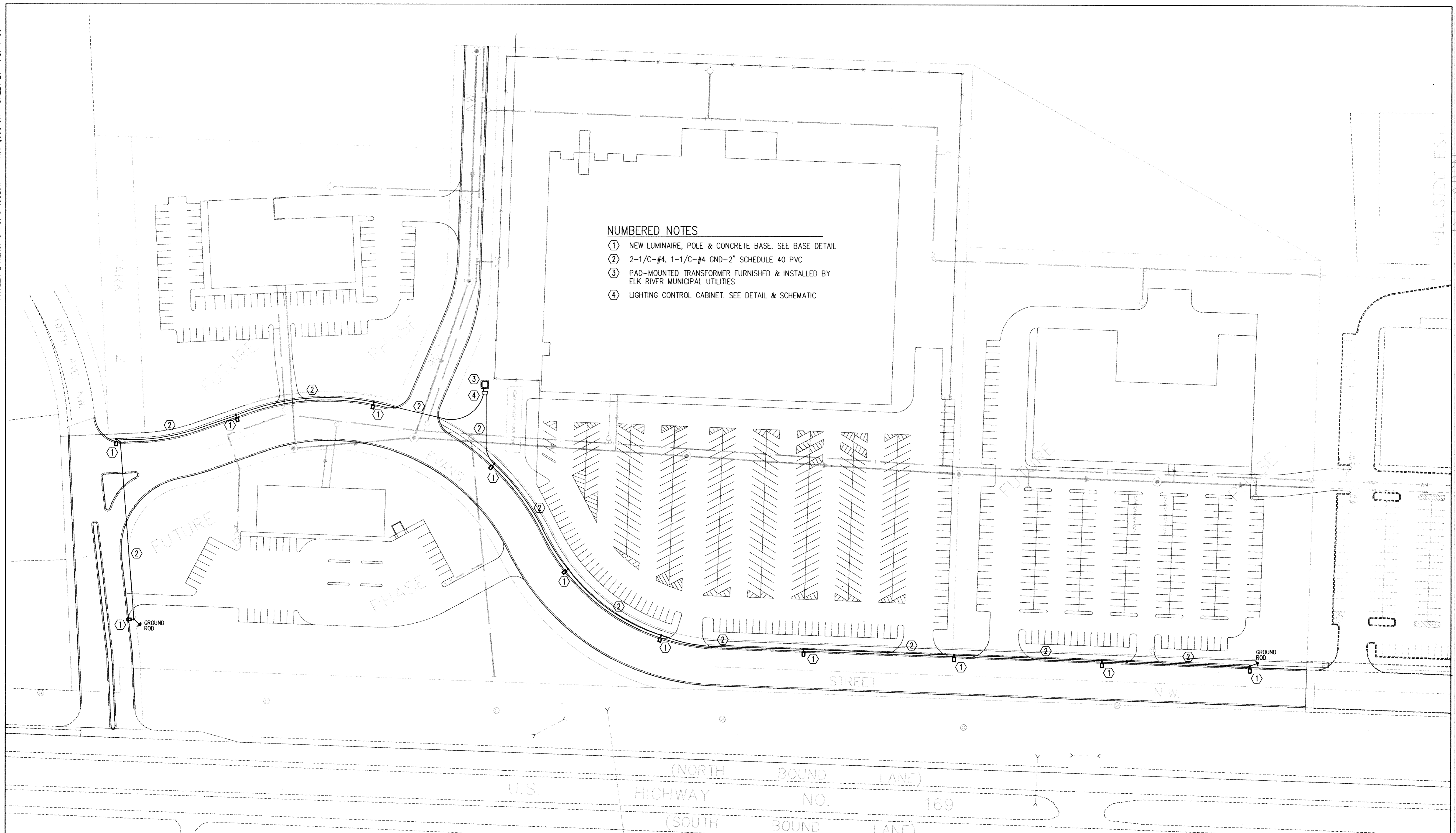
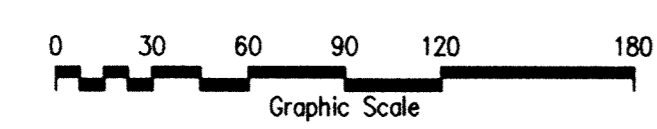


SAECO PRODUCTS • NEW HOPE, MINNESOTA  
REGISTERED PROFESSIONAL ENGINEER  
SAECO PRODUCTS • NEW HOPE, MINNESOTA  
REGISTERED PROFESSIONAL ENGINEER  
SAECO PRODUCTS • NEW HOPE, MINNESOTA  
REGISTERED PROFESSIONAL ENGINEER  
SAECO PRODUCTS • NEW HOPE, MINNESOTA  
REGISTERED PROFESSIONAL ENGINEER



- NUMBERED NOTES**
- ① NEW LUMINAIRE, POLE & CONCRETE BASE. SEE BASE DETAIL
  - ② 2-1/C-#4, 1-1/C-#4 GND-2" SCHEDULE 40 PVC
  - ③ PAD-MOUNTED TRANSFORMER FURNISHED & INSTALLED BY ELK RIVER MUNICIPAL UTILITIES
  - ④ LIGHTING CONTROL CABINET. SEE DETAIL & SCHEMATIC

**STREET LIGHTING PLAN**  
SCALE: 1"=60'



This drawing was prepared by:  
**Keating & Associates, Inc.**  
7300 France Avenue South  
Suite 330  
Minneapolis, MN 55435  
Telephone: (612) 831-0317  
Fax: (612) 831-2179

I HEREBY CERTIFY THAT THIS PLAN, SPECIFICATION, OR REPORT WAS PREPARED BY ME OR UNDER MY DIRECT SUPERVISION AND THAT I AM A DULY REGISTERED PROFESSIONAL ENGINEER UNDER THE LAWS OF THE STATE OF MINNESOTA.

*[Signature]*  
DATE 12 APR 96 REG. NO. 9955



1326 ENERGY PARK DRIVE  
ST. PAUL, MINNESOTA 55108  
(612) 644-4389

REVISIONS	DATE	DESCRIPTION	DESIGNED PFK	CHECKED PFK	DRAWN CPM

GRAPHIC SCALE  
0 HORIZ.  
0 VERT.

**CITY OF ELK RIVER**  
HILLSIDE CROSSING II  
STREET LIGHTING PLAN

DATE APR 1996 SHEET 26 OF 31 SHEETS PROJECT NO. 230-297-12

**RECORD PLAN**  
MARCH 1997