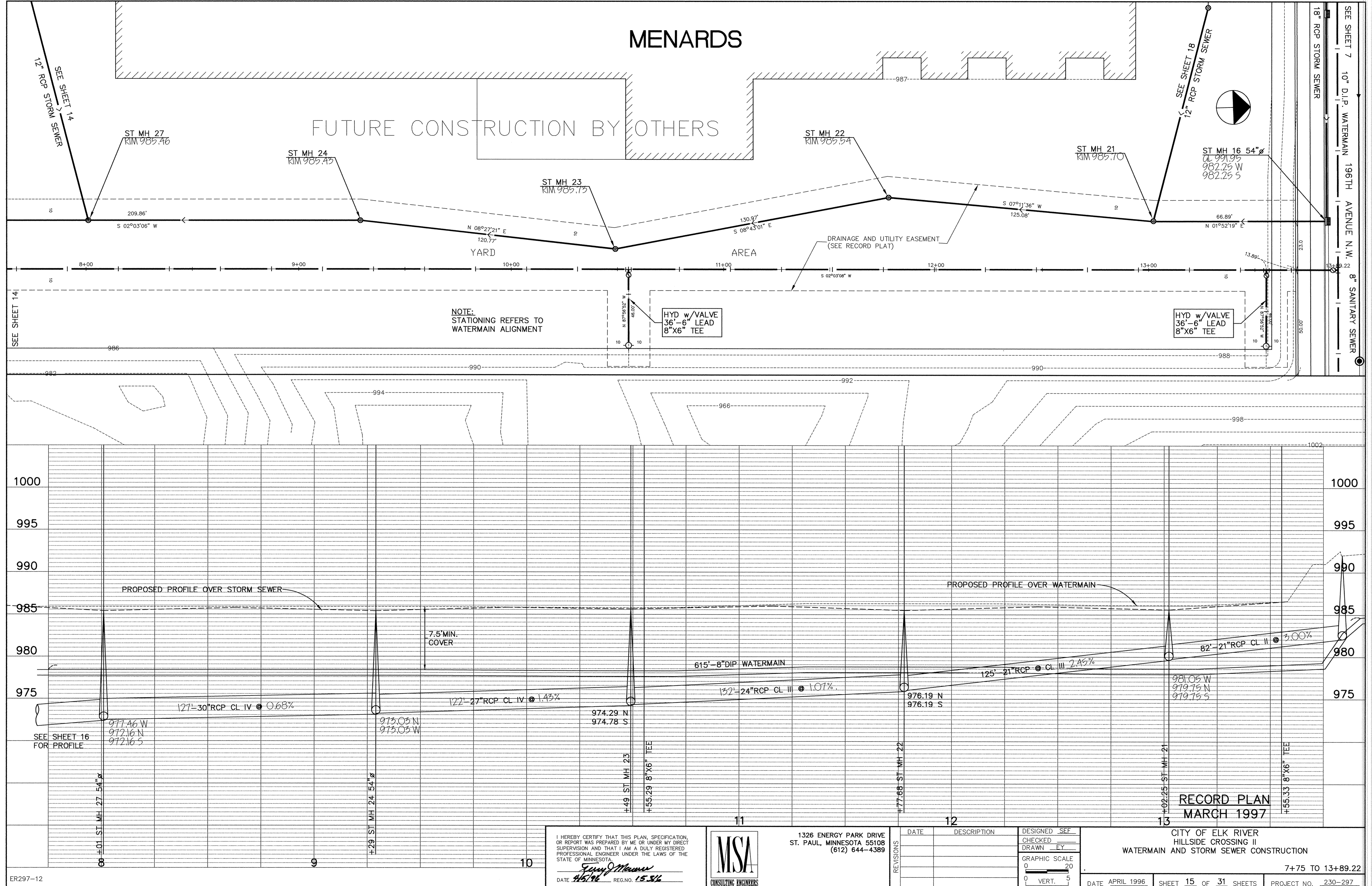


SDCO PRODUCTS • NEW AUGE, MINNESOTA  
REVISION BY PART NUMBER 6822

SDCO PRODUCTS • NEW AUGE, MINNESOTA  
REVISION BY PART NUMBER 6822

SDCO PRODUCTS • NEW AUGE, MINNESOTA  
REVISION BY PART NUMBER 6822

SDCO PRODUCTS • NEW AUGE, MINNESOTA  
REVISION BY PART NUMBER 6822



MENARDS

FUTURE CONSTRUCTION BY OTHERS

NOTE:  
STATIONING REFERS TO  
WATERMAIN ALIGNMENT

HYD w/ VALVE  
36"-6" LEAD  
8"x6" TEE

HYD w/ VALVE  
36"-6" LEAD  
8"x6" TEE

I HEREBY CERTIFY THAT THIS PLAN, SPECIFICATION, OR REPORT WAS PREPARED BY ME OR UNDER MY DIRECT SUPERVISION AND THAT I AM A DULY REGISTERED PROFESSIONAL ENGINEER UNDER THE LAWS OF THE STATE OF MINNESOTA.

*James J. Mauer*  
DATE 4/5/96 REG. NO. 15,516



1326 ENERGY PARK DRIVE  
ST. PAUL, MINNESOTA 55108  
(612) 644-4389

REVISIONS	DATE	DESCRIPTION	DESIGNED	SEF

CITY OF ELK RIVER  
HILLSIDE CROSSING II  
WATERMAIN AND STORM SEWER CONSTRUCTION

7+75 TO 13+89.22

DATE APRIL 1996 SHEET 15 OF 31 SHEETS PROJECT NO. 230-297