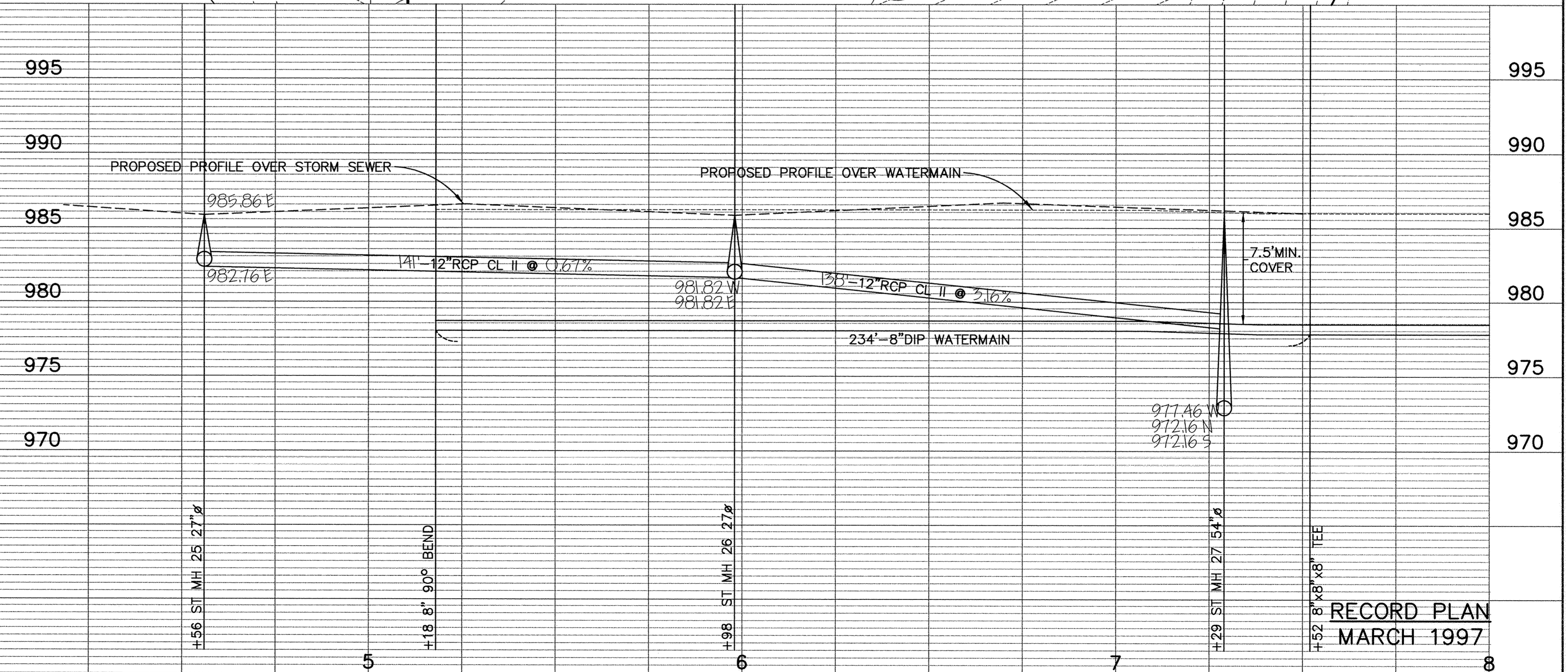
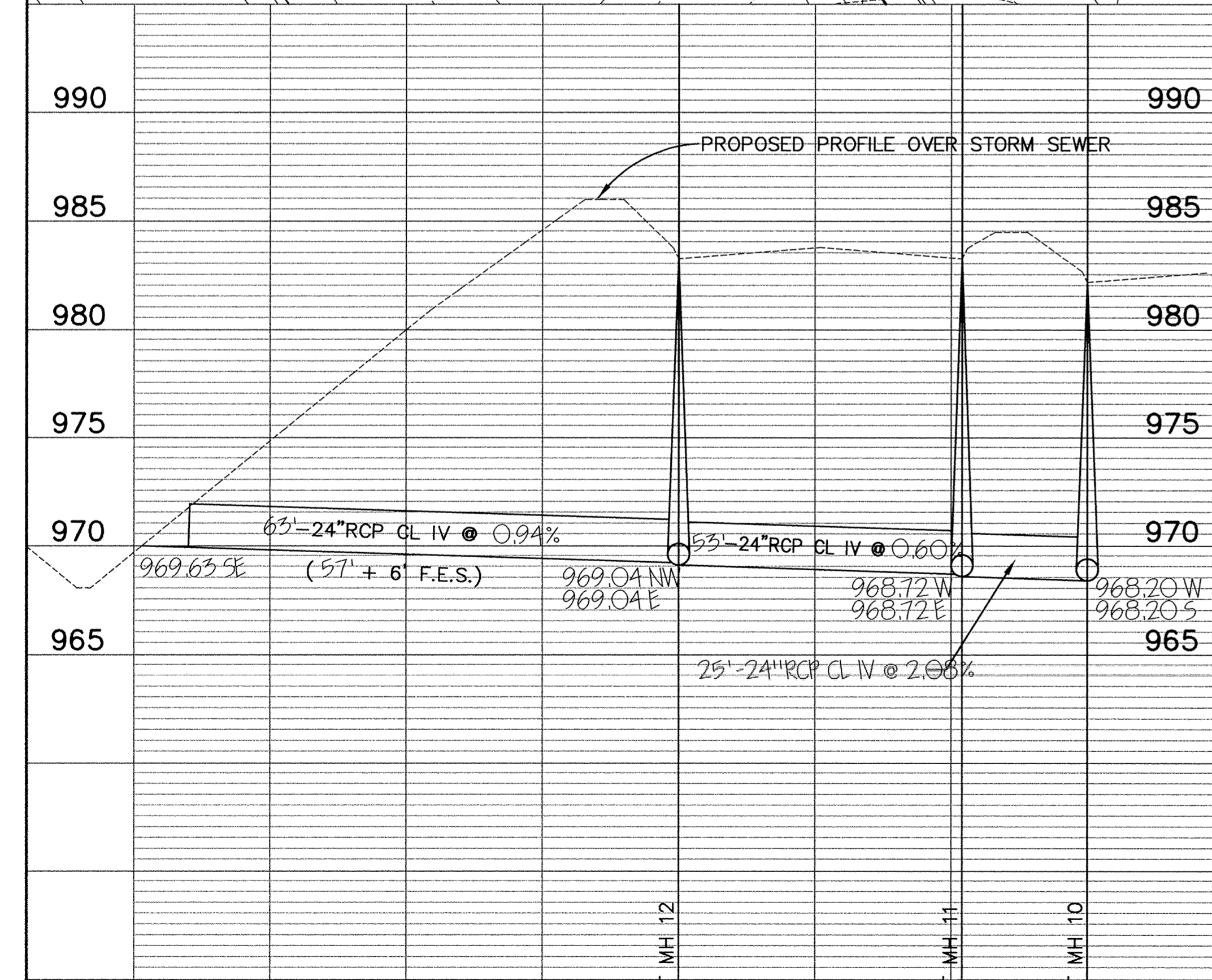
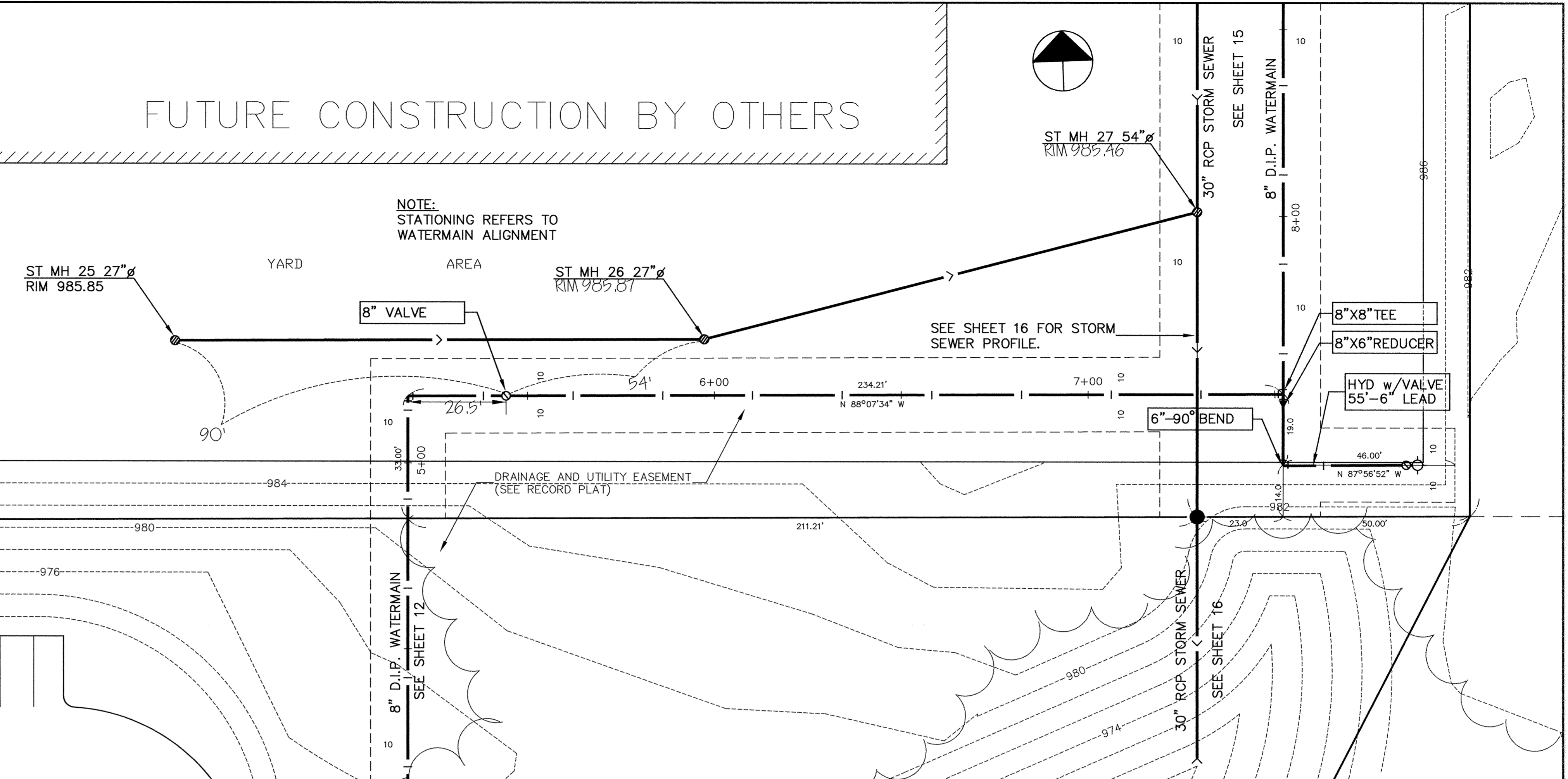
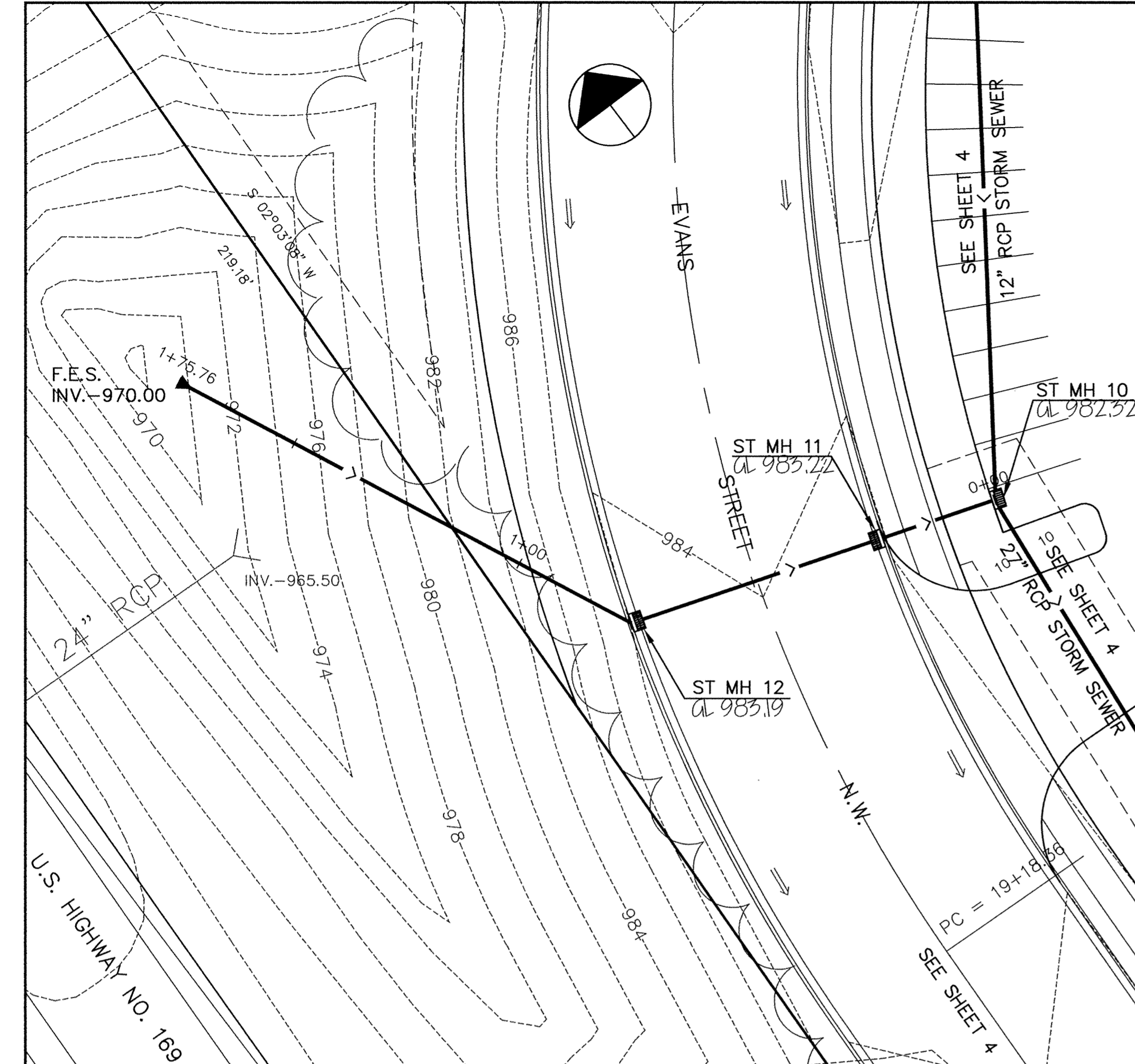


SAFCO PRODUCTS • NEW HOPE, MINNESOTA
REORDER BY PART NUMBER 8532
SAFCO PRODUCTS • NEW HOPE, MINNESOTA
REORDER BY PART NUMBER 8532
SAFCO PRODUCTS • NEW HOPE, MINNESOTA
REORDER BY PART NUMBER 8532
SAFCO PRODUCTS • NEW HOPE, MINNESOTA
REORDER BY PART NUMBER 8532



990		990	995
985		985	990
980		980	985
975		975	980
970		970	975
965		965	970

990	995	990	985	980	975	970
-----	-----	-----	-----	-----	-----	-----

I HEREBY CERTIFY THAT THIS PLAN, SPECIFICATION, OR REPORT WAS PREPARED BY ME OR UNDER MY DIRECT SUPERVISION AND THAT I AM A DULY REGISTERED PROFESSIONAL ENGINEER UNDER THE LAWS OF THE STATE OF MINNESOTA.
Joseph M. Mann
 DATE 4/15/96 REG. NO. 15316

MSA
 CONSULTING ENGINEERS
 1326 ENERGY PARK DRIVE
 ST. PAUL, MINNESOTA 55108
 (612) 644-4389

REVISIONS	DATE	DESCRIPTION	DESIGNED	CHKD	SEF

CITY OF ELK RIVER
 HILLSIDE CROSSING II
 WATERMAIN AND STORM SEWER CONSTRUCTION
 5+18 TO 8+00
 DATE APRIL 1996 SHEET 14 OF 31 SHEETS PROJECT NO. 230-297

RECORD PLAN
 MARCH 1997