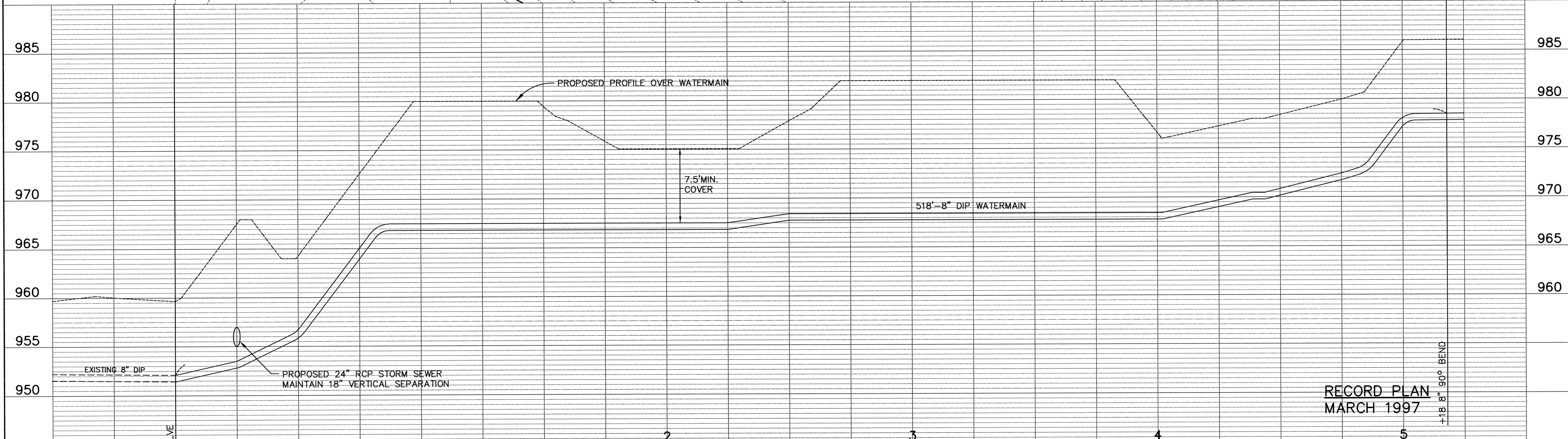
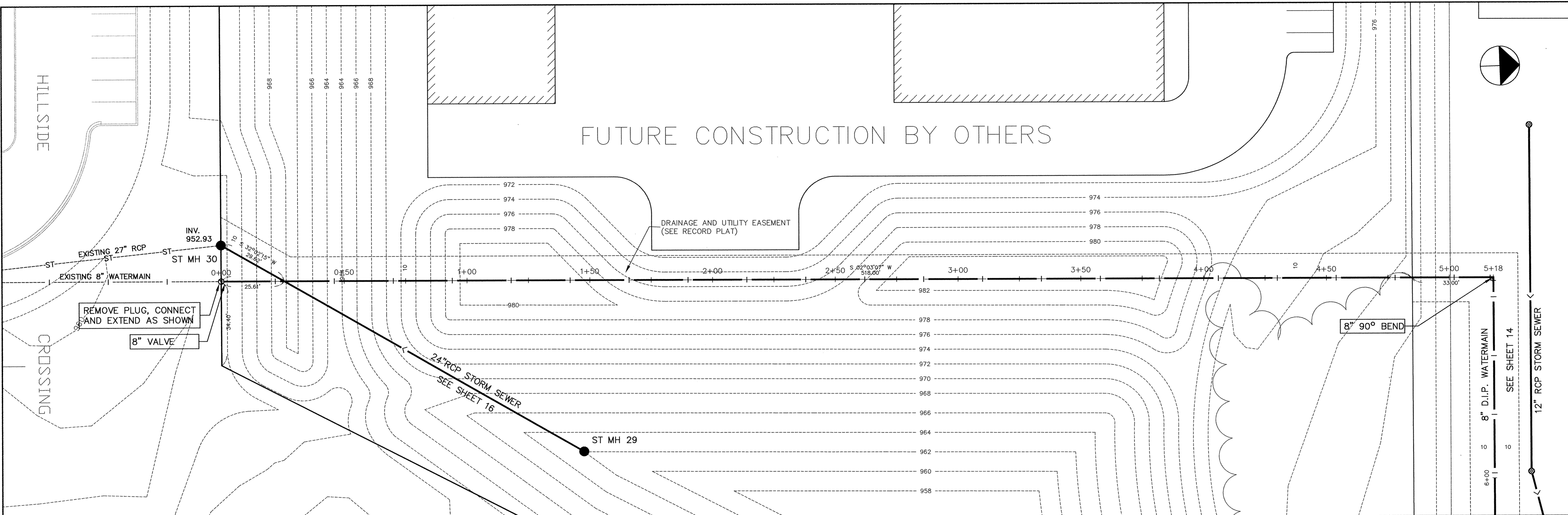


SAFCO PRODUCTS • NEW HOPKINS, MINNESOTA
REVISION BY PART NUMBER 8552
SAFCO PRODUCTS • NEW HOPKINS, MINNESOTA
REVISION BY PART NUMBER 8552
SAFCO PRODUCTS • NEW HOPKINS, MINNESOTA
REVISION BY PART NUMBER 8552
SAFCO PRODUCTS • NEW HOPKINS, MINNESOTA
REVISION BY PART NUMBER 8552



ER297-13

0 1

I HEREBY CERTIFY THAT THIS PLAN, SPECIFICATION, OR REPORT WAS PREPARED BY ME OR UNDER MY DIRECT SUPERVISION AND THAT I AM A DULY REGISTERED PROFESSIONAL ENGINEER UNDER THE LAWS OF THE STATE OF MINNESOTA.

Scott J. Mann
DATE 4/25/96 REG. NO. 15316

MSA
CONSULTING ENGINEERS

1326 ENERGY PARK DRIVE
ST. PAUL, MINNESOTA 55108
(612) 644-4389

REVISIONS	DATE	DESCRIPTION	DESIGNED	SEF

CITY OF ELK RIVER
HILLSIDE CROSSING II
WATERMAIN CONSTRUCTION

0+00 TO 5+18

DATE APRIL 1996 SHEET 13 OF 31 SHEETS PROJECT NO. 230-297