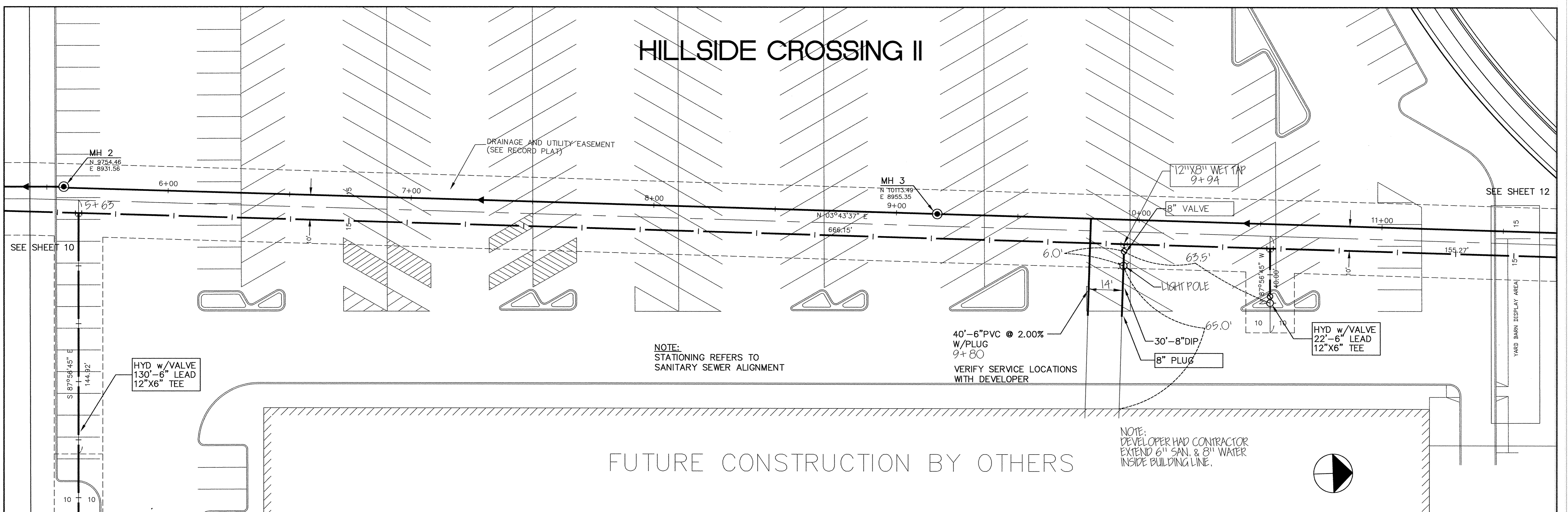


HILLSIDE CROSSING II



I HEREBY CERTIFY THAT THIS PLAN, SPECIFICATION, OR REPORT WAS PREPARED BY ME OR UNDER MY DIRECT SUPERVISION AND THAT I AM A DULY REGISTERED PROFESSIONAL ENGINEER UNDER THE LAWS OF THE STATE OF MINNESOTA. <i>Leann Mauer</i> DATE 4/15/96 REG. NO. 15316		1326 ENERGY PARK DRIVE ST. PAUL, MINNESOTA 55108 (612) 644-4389	DATE	DESCRIPTION	DESIGNED <u>SEF</u>	CITY OF ELK RIVER HILLSIDE CROSSING II WATERMAIN AND SANITARY SEWER CONSTRUCTION 5+50 TO 11+50
			REVISIONS 0 1 2 3 4 5	CHECKED <u>SEF</u> DRAWN <u>EY</u>	GRAPHIC SCALE 0 20 0 5 VERT.	

SD&C PRODUCTS - NEW HOPK, MINNESOTA
 RECORD BY PLAN NUMBER 582
 SD&C PRODUCTS - NEW HOPK, MINNESOTA
 RECORD BY PLAN NUMBER 582
 SD&C PRODUCTS - NEW HOPK, MINNESOTA
 RECORD BY PLAN NUMBER 582
 SD&C PRODUCTS - NEW HOPK, MINNESOTA
 RECORD BY PLAN NUMBER 582

0:\CAD\ELK RIVER\ER297\ER297-8.dwg Fr1 Dec 26 14:01:42 1997