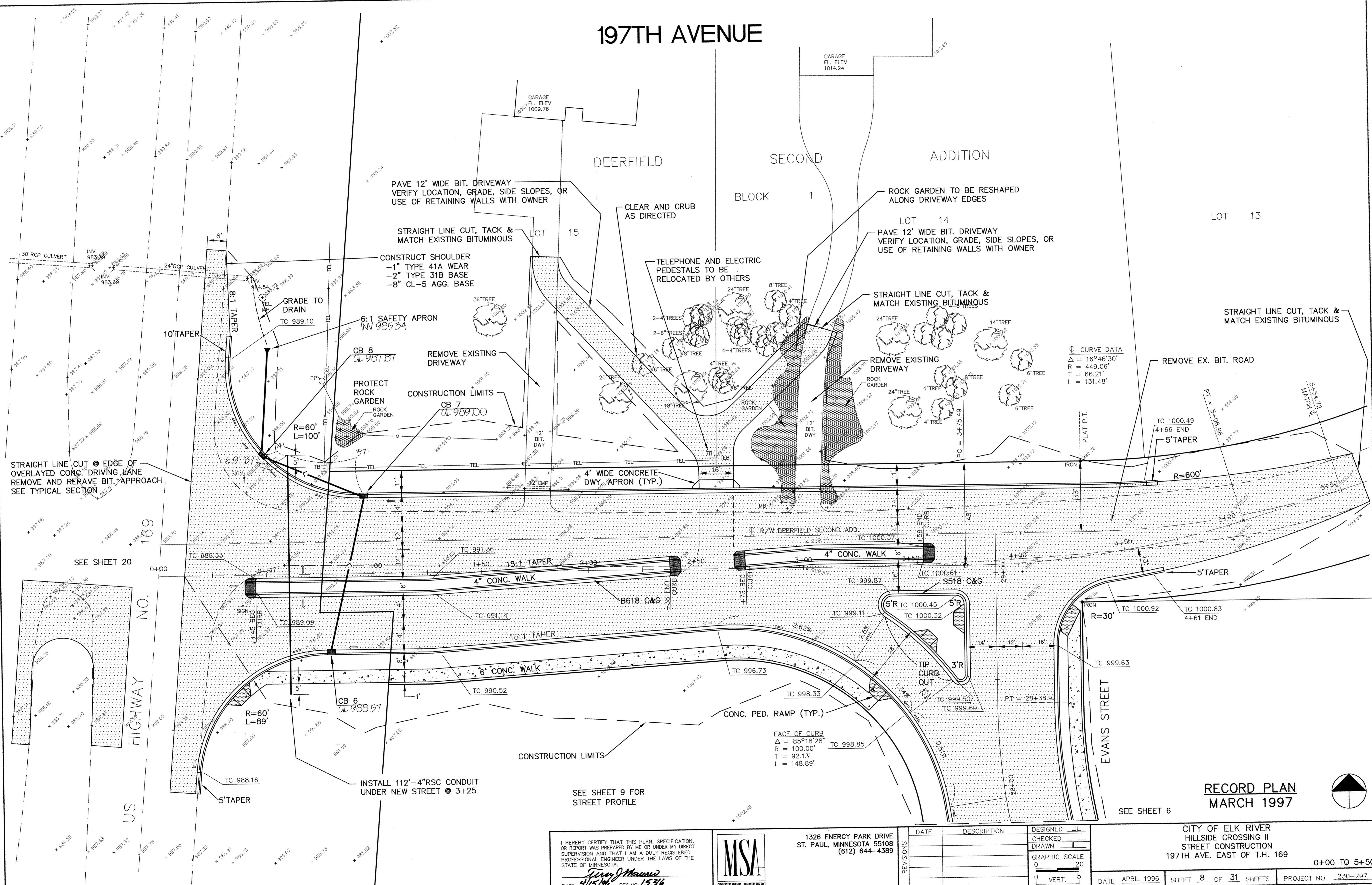


197TH AVENUE

DEERFIELD SECOND ADDITION

BLOCK 1

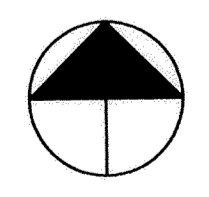
LOT 14



③ CURVE DATA
 $\Delta = 16^\circ 46' 30''$
 $R = 449.06'$
 $T = 66.21'$
 $L = 131.48'$

FACE OF CURB
 $\Delta = 85^\circ 18' 28''$
 $R = 100.00'$
 $T = 92.13'$
 $L = 148.89'$

RECORD PLAN
MARCH 1997



I HEREBY CERTIFY THAT THIS PLAN, SPECIFICATION, OR REPORT WAS PREPARED BY ME OR UNDER MY DIRECT SUPERVISION AND THAT I AM A DULY REGISTERED PROFESSIONAL ENGINEER UNDER THE LAWS OF THE STATE OF MINNESOTA.

Jason J. Maurer
 DATE 4/15/96 REG. NO. 15316



1326 ENERGY PARK DRIVE
 ST. PAUL, MINNESOTA 55108
 (612) 644-4389

REVISIONS	DATE	DESCRIPTION	DESIGNED	CHECKED	DRAWN

GRAPHIC SCALE
 0 20
 0 VERT. 5

CITY OF ELK RIVER
 HILLSIDE CROSSING II
 STREET CONSTRUCTION
 197TH AVE. EAST OF T.H. 169

0+00 TO 5+50

DATE APRIL 1996 SHEET 8 OF 31 SHEETS PROJECT NO. 230-297