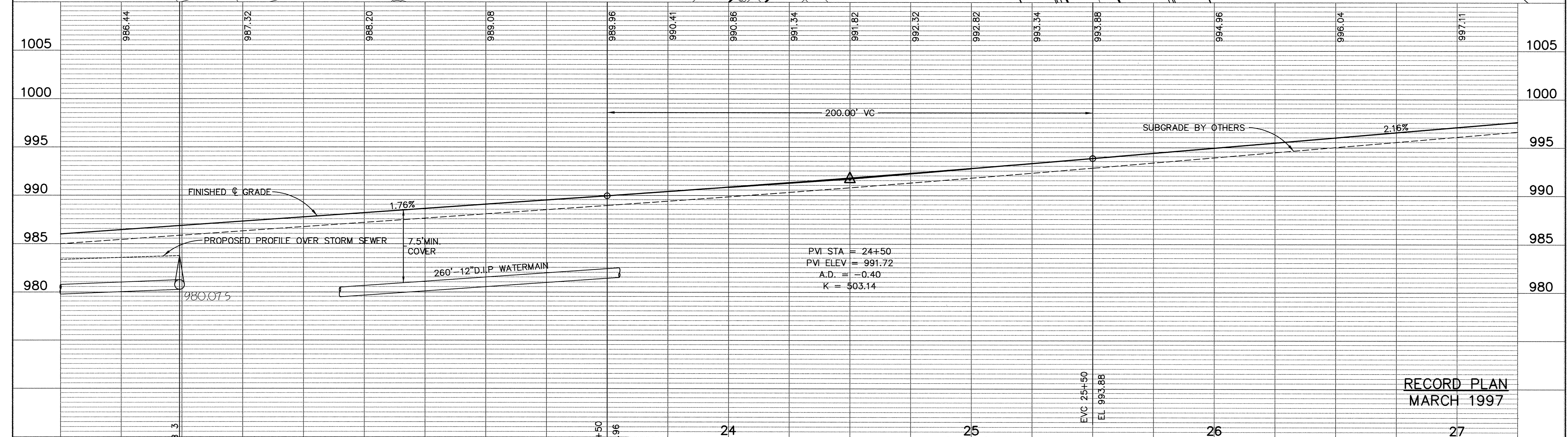
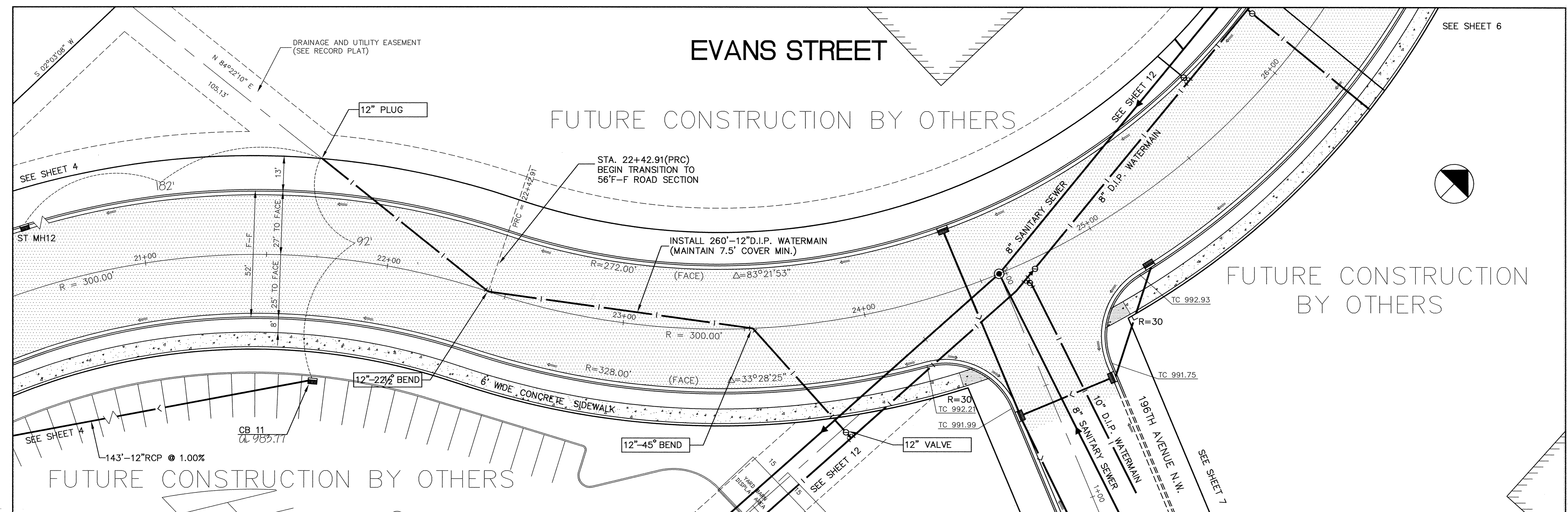


EVANS STREET

FUTURE CONSTRUCTION BY OTHERS

FUTURE CONSTRUCTION BY OTHERS



PVI STA = 24+50
 PVI ELEV = 991.72
 A.D. = -0.40
 K = 503.14

RECORD PLAN
 MARCH 1997

I HEREBY CERTIFY THAT THIS PLAN, SPECIFICATION, OR REPORT WAS PREPARED BY ME OR UNDER MY DIRECT SUPERVISION AND THAT I AM A DULY REGISTERED PROFESSIONAL ENGINEER UNDER THE LAWS OF THE STATE OF MINNESOTA.

James Mauer
 DATE 4/15/96 REG. NO. 15314



1326 ENERGY PARK DRIVE
 ST. PAUL, MINNESOTA 55108
 (612) 644-4389

DATE	DESCRIPTION

DESIGNED	SEF
CHECKED	
DRAWN	EY
GRAPHIC SCALE	
0 20	
VERT. 5	

CITY OF ELK RIVER
 HILLSIDE CROSSING II
 WATERMAIN, STORM SEWER AND STREET CONSTRUCTION
 EVANS STREET

21+50 TO 26+00

DATE APRIL 1996 SHEET 5 OF 31 SHEETS PROJECT NO. 230-297