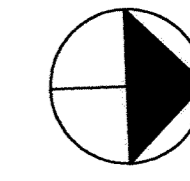
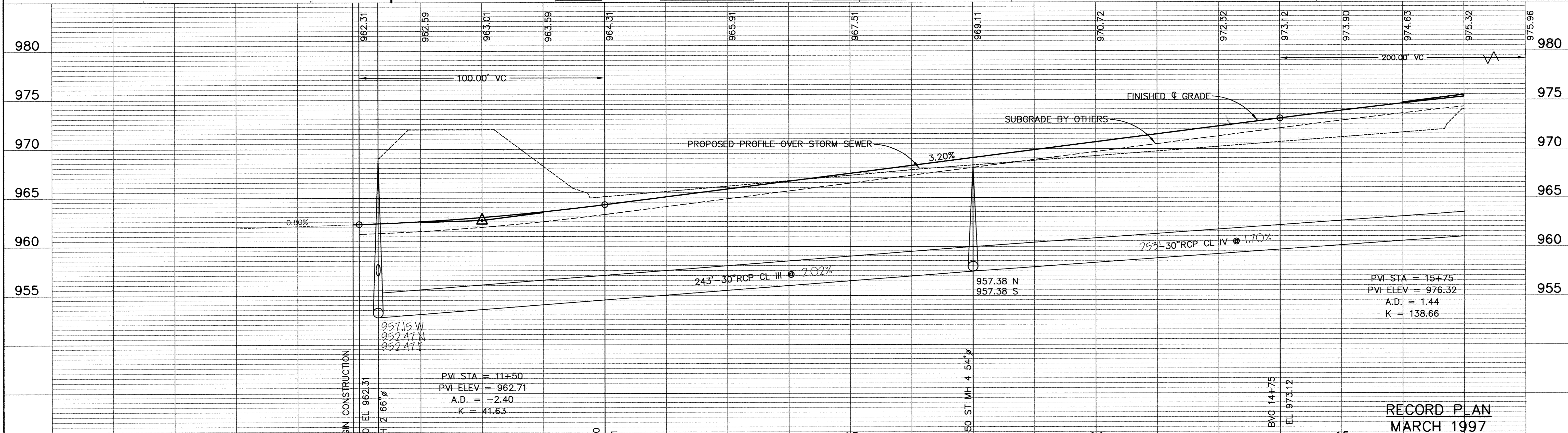
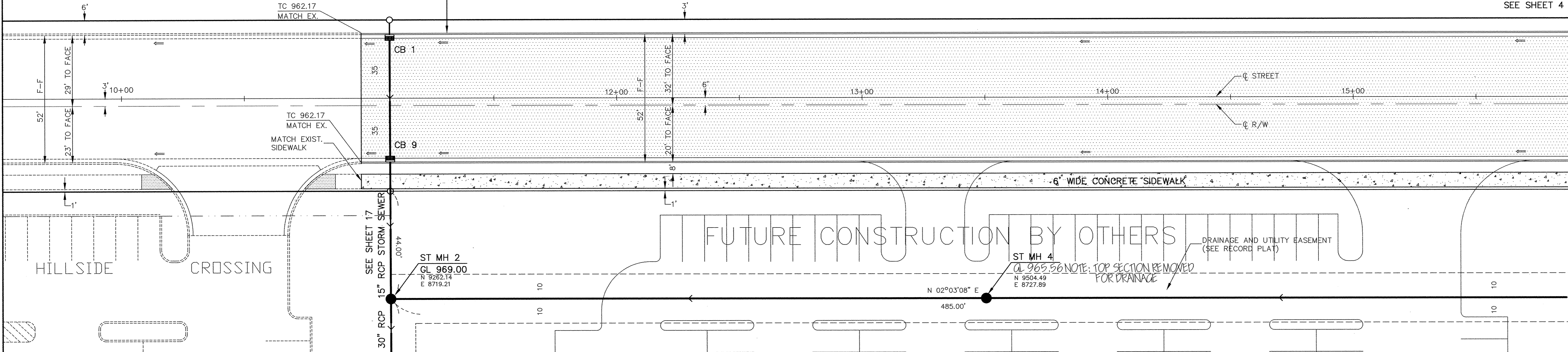


EVANS STREET



SEE SHEET 4

TRANSITION CURB AND GUTTER ALIGNMENT
FROM 6FT. R.O.W. TO BACK OF CURB WEST SIDE
TO 3FT. R.O.W. TO BACK OF CURB WEST SIDE
IN 100LF (STA. 12+00)



ER297-1 10	+97.5 BEGIN CONSTRUCTION BVC 11+00 EL 962.31 +07.7 ST MH 2 66" Ø PVI STA = 11+50 PVI ELEV = 962.71 A.D. = -2.40 K = 41.63 EVC 12+00 EL 964.31	12	13	+50 ST MH 4 54" Ø 957.38 N 957.38 S	14	BVC 14+75 EL 973.12	15	RECORD PLAN MARCH 1997 CITY OF ELK RIVER HILLSIDE CROSSING II STORM SEWER AND STREET CONSTRUCTION EVANS STREET 11+00 TO 15+50
---------------	---	----	----	---	----	------------------------	----	---

I HEREBY CERTIFY THAT THIS PLAN, SPECIFICATION, OR REPORT WAS PREPARED BY ME OR UNDER MY DIRECT SUPERVISION AND THAT I AM A DULY REGISTERED PROFESSIONAL ENGINEER UNDER THE LAWS OF THE STATE OF MINNESOTA.

Walter Mauer
DATE 4/15/97 REG. NO. 15314

DATE	DESCRIPTION	DESIGNED	SEF

DATE APRIL 1996 SHEET 3 OF 31 SHEETS PROJECT NO. 230-297

DRAWING NUMBER 3
 HILLSIDE CROSSING II
 STORM SEWER AND STREET CONSTRUCTION
 EVANS STREET
 11+00 TO 15+50
 CITY OF ELK RIVER
 HILLSIDE CROSSING II
 STORM SEWER AND STREET CONSTRUCTION
 EVANS STREET
 11+00 TO 15+50
 DATE APRIL 1996 SHEET 3 OF 31 SHEETS PROJECT NO. 230-297
 SAICO PRODUCTS • NEW HOPE, MINNESOTA
 REVISIONS BY PART NUMBER 8932
 DRAWING NUMBER 8932
 SAICO PRODUCTS • NEW HOPE, MINNESOTA
 REVISIONS BY PART NUMBER 8932
 DRAWING NUMBER 8932

C:\CAD\ELK River\ER297\ER297-1.dwg P1 Dec 26 13:30:21 1997