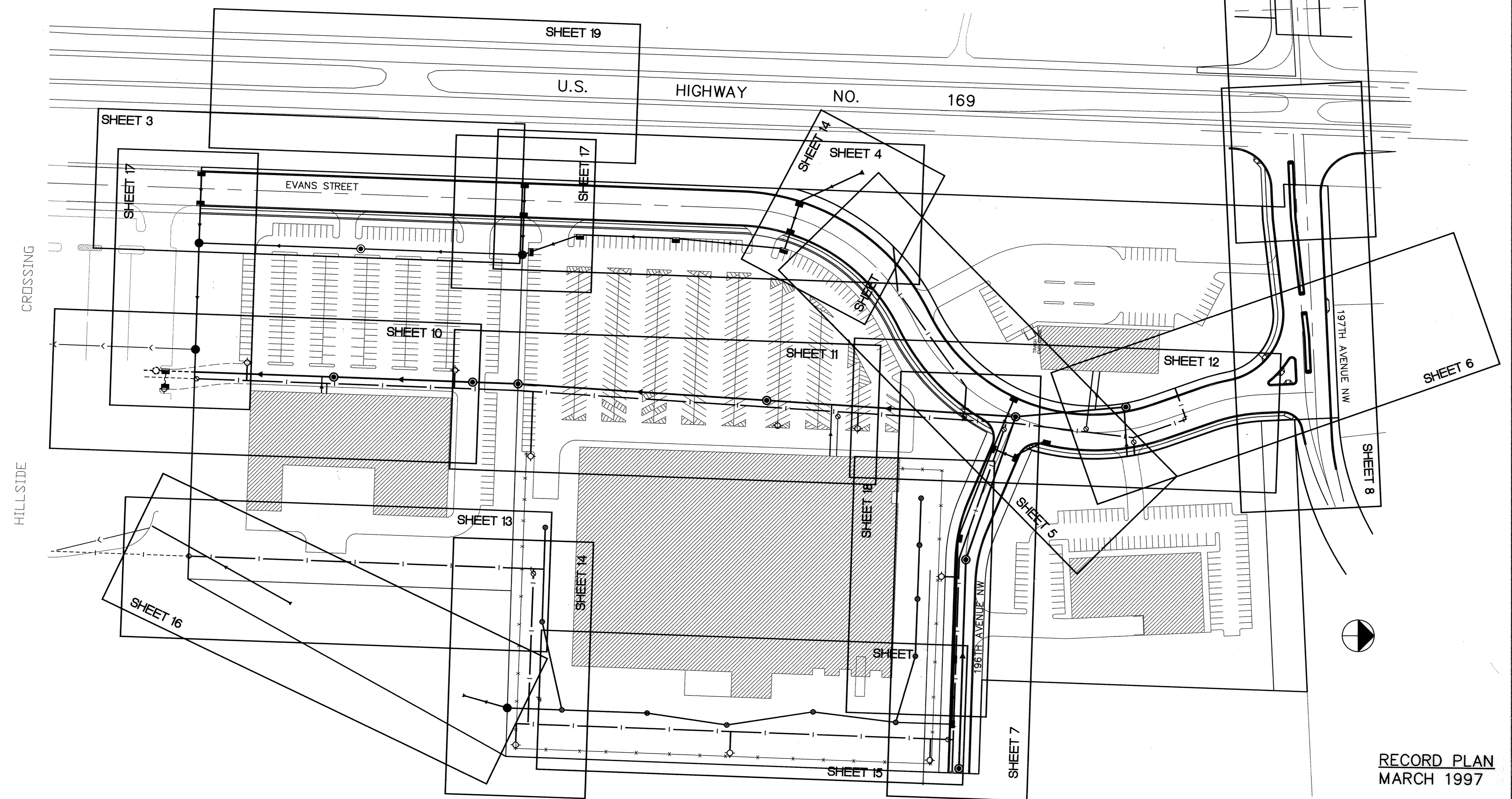
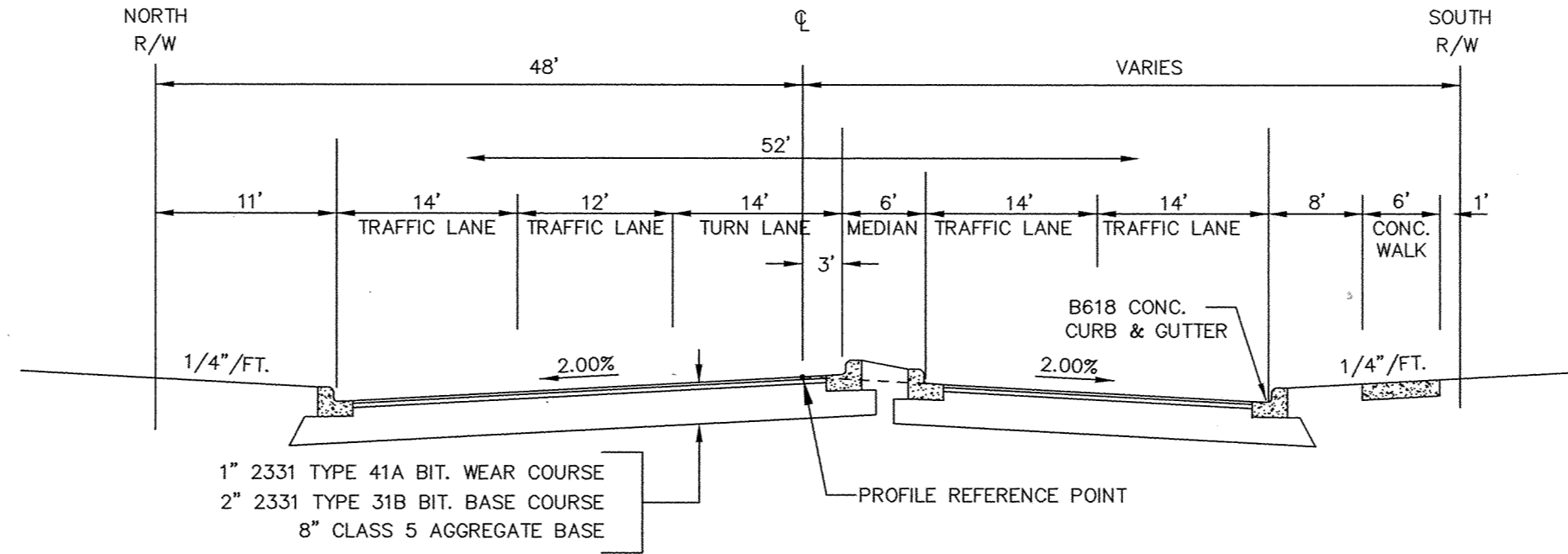
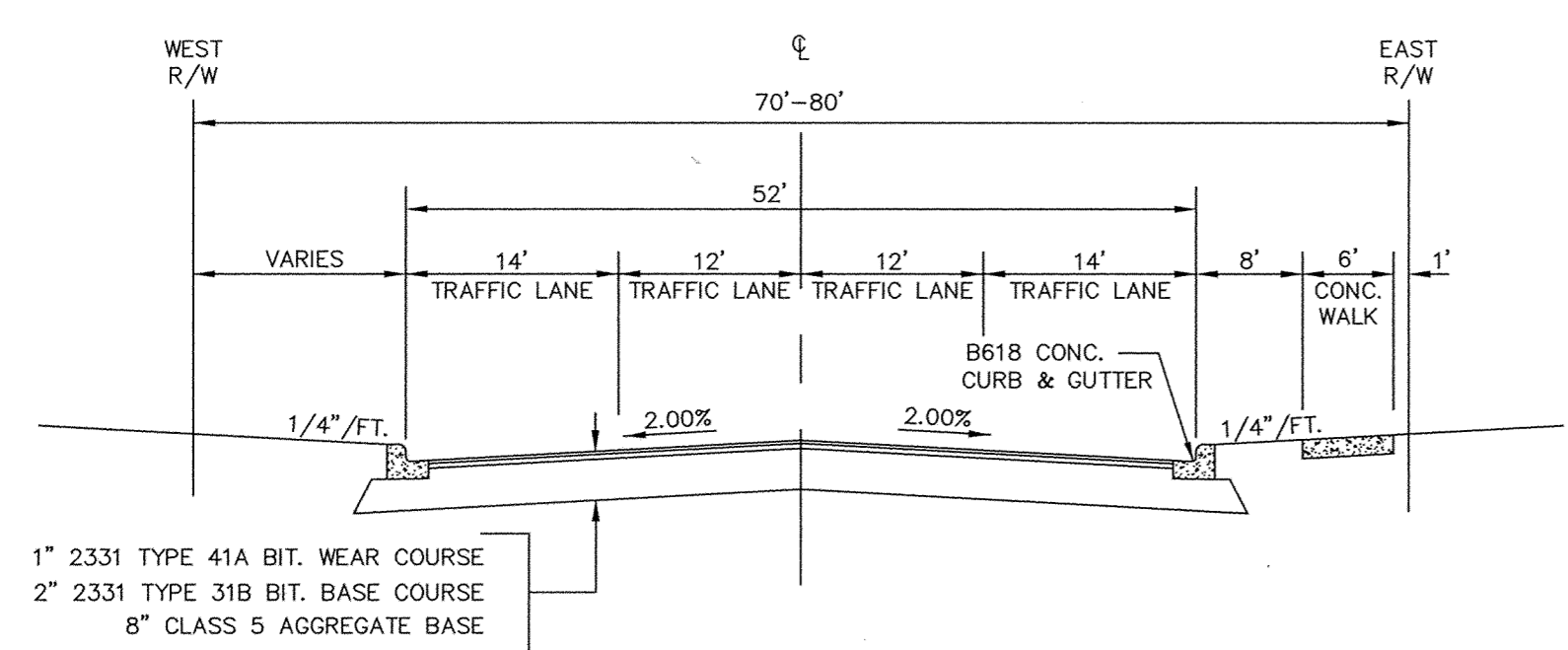


SDCO PRODUCTS • NEW HOPK, MINNESOTA  
REVISION BY PART NUMBER 8052

SDCO PRODUCTS • NEW HOPK, MINNESOTA  
REVISION BY PART NUMBER 8052

SDCO PRODUCTS • NEW HOPK, MINNESOTA  
REVISION BY PART NUMBER 8052

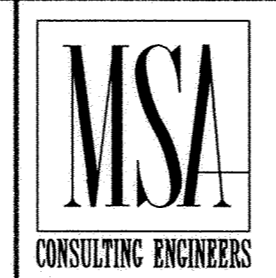
SDCO PRODUCTS • NEW HOPK, MINNESOTA  
REVISION BY PART NUMBER 8052



RECORD PLAN  
MARCH 1997

I HEREBY CERTIFY THAT THIS PLAN, SPECIFICATION, OR REPORT WAS PREPARED BY ME OR UNDER MY DIRECT SUPERVISION AND THAT I AM A DULY REGISTERED PROFESSIONAL ENGINEER UNDER THE LAWS OF THE STATE OF MINNESOTA.

*Gregory J. Maurer*  
DATE 4/16/96 REG. NO. 15316



1326 ENERGY PARK DRIVE  
ST. PAUL, MINNESOTA 55108  
(612) 644-4389

REVISIONS	DATE	DESCRIPTION	DESIGNED	SEF
			CHECKED	SP
			DRAWN	EY

GRAPHIC SCALE  
0 50  
0 VERT. 5

CITY OF ELK RIVER  
HILLSIDE CROSSING II  
STREETS AND UTILITIES  
LOCATION MAP

DATE APRIL 1996 SHEET 2 OF 31 SHEETS PROJECT NO. 230-97