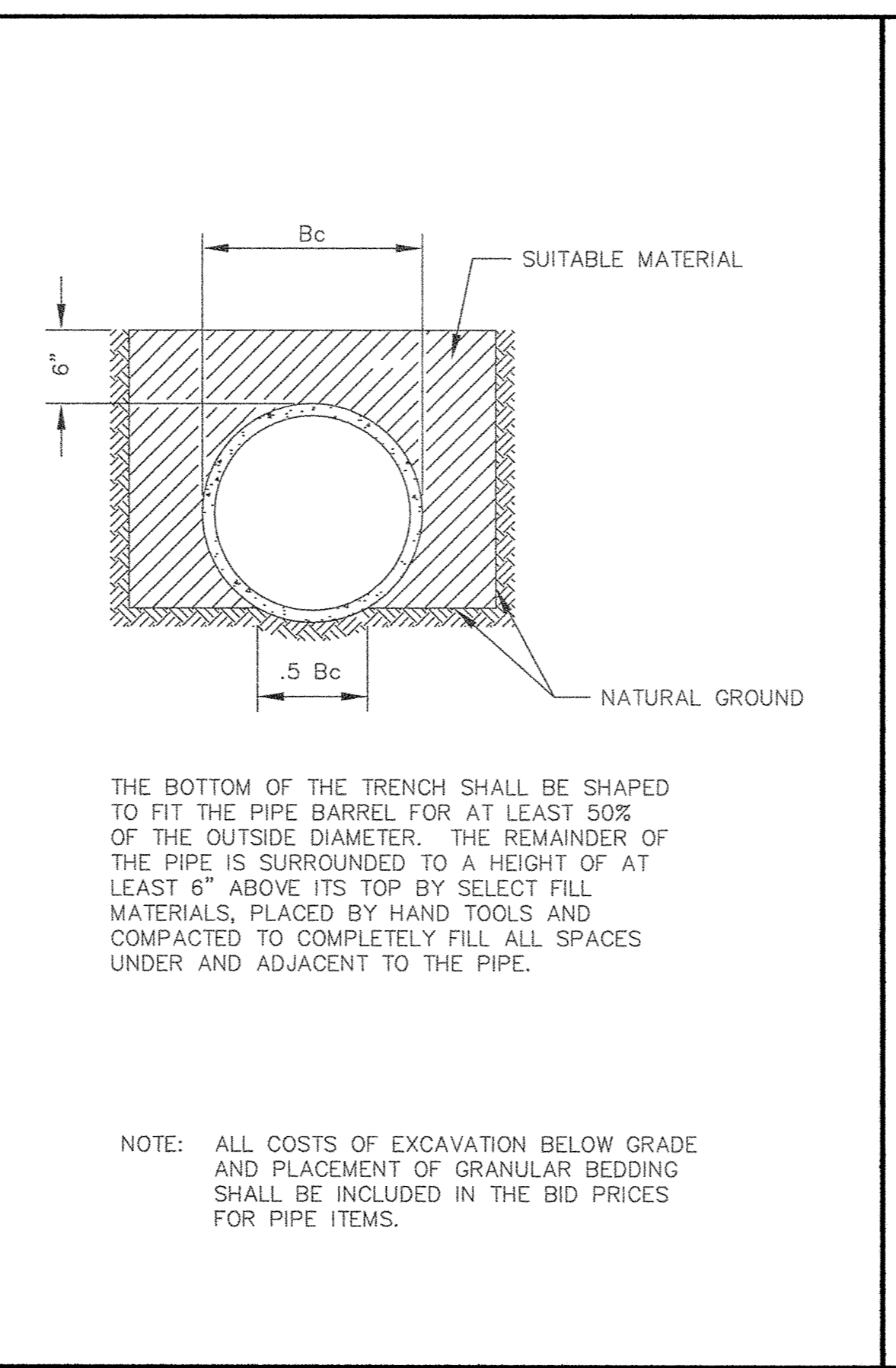
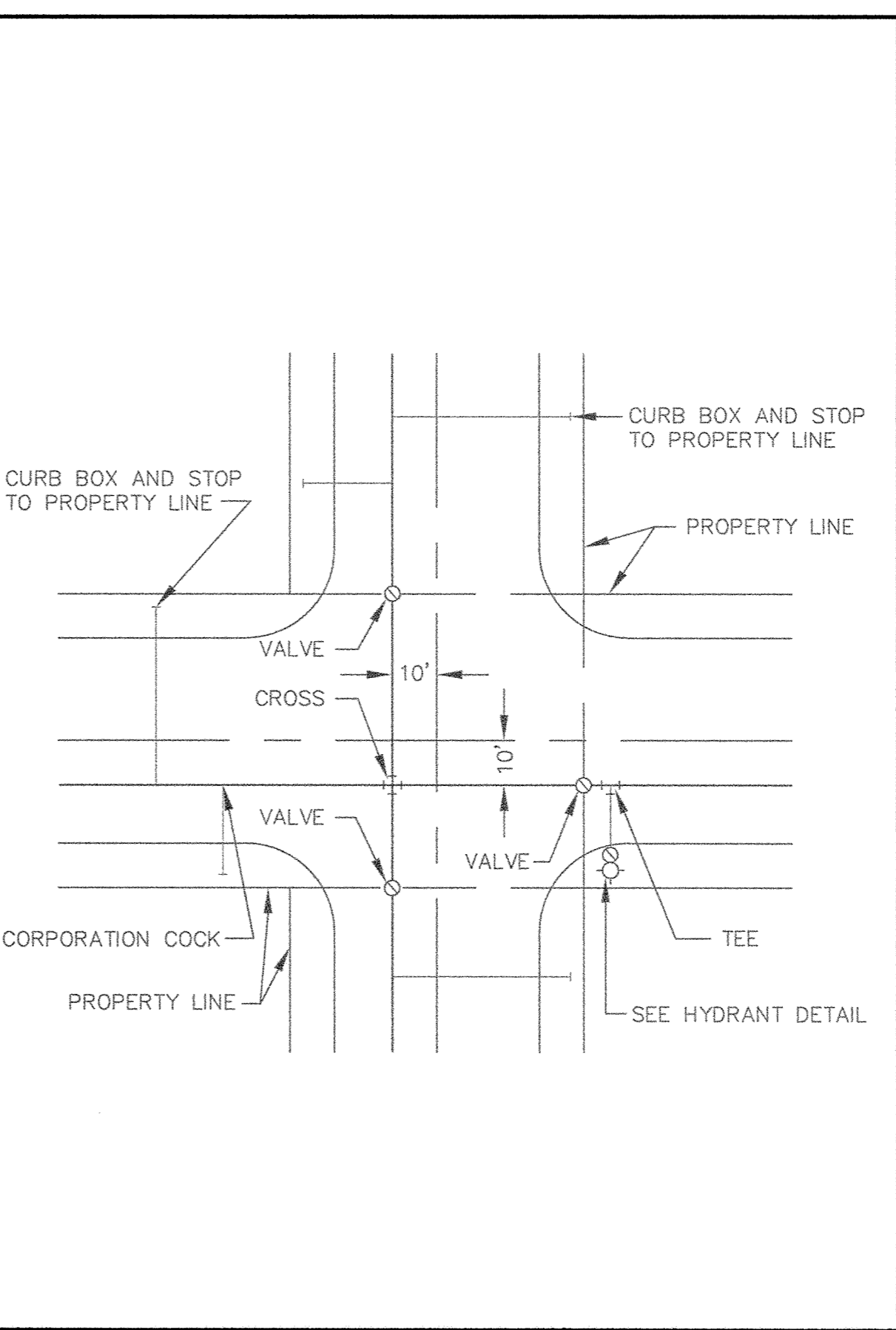


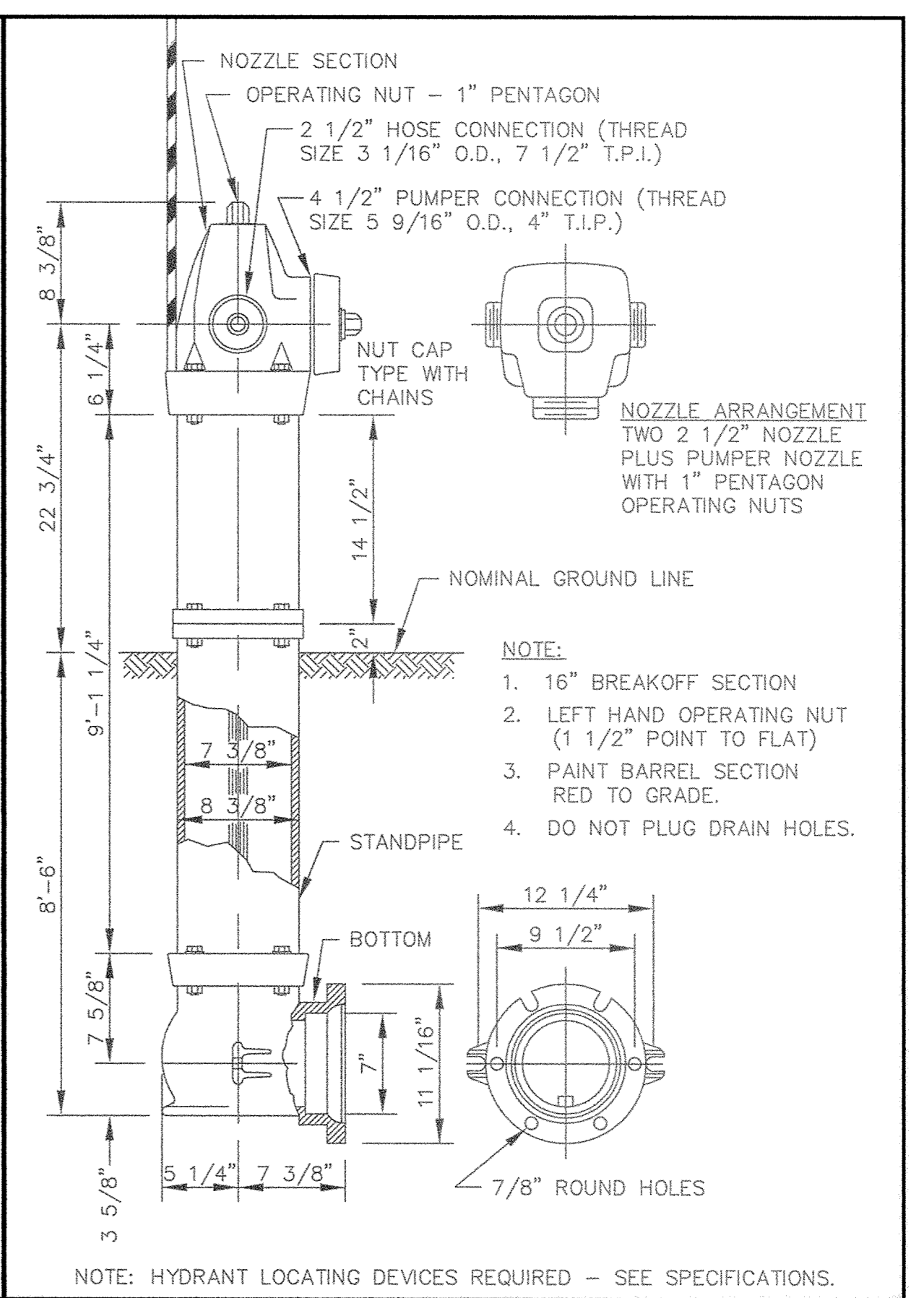
CLASS B PIPE BEDDING



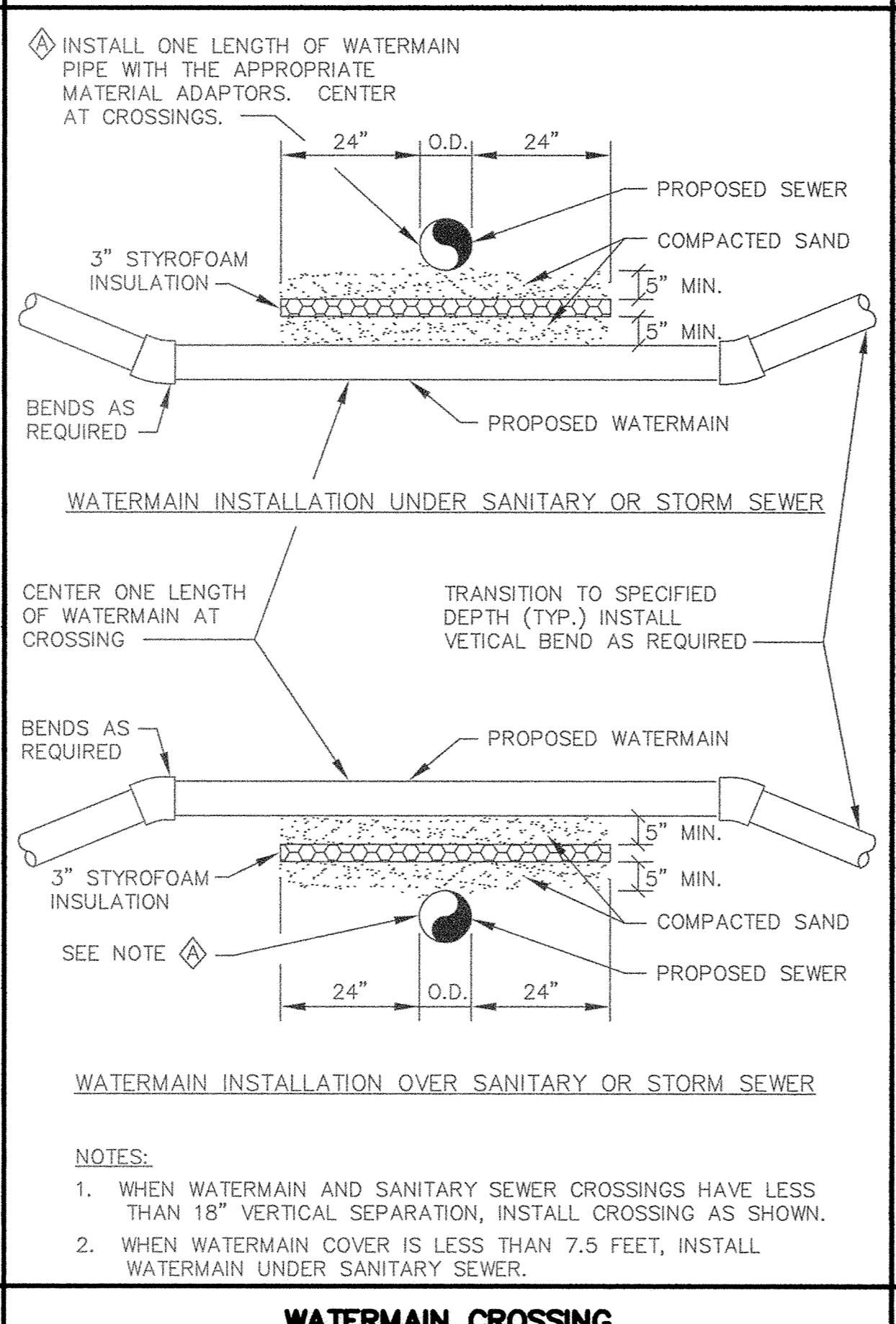
CLASS C PIPE BEDDING



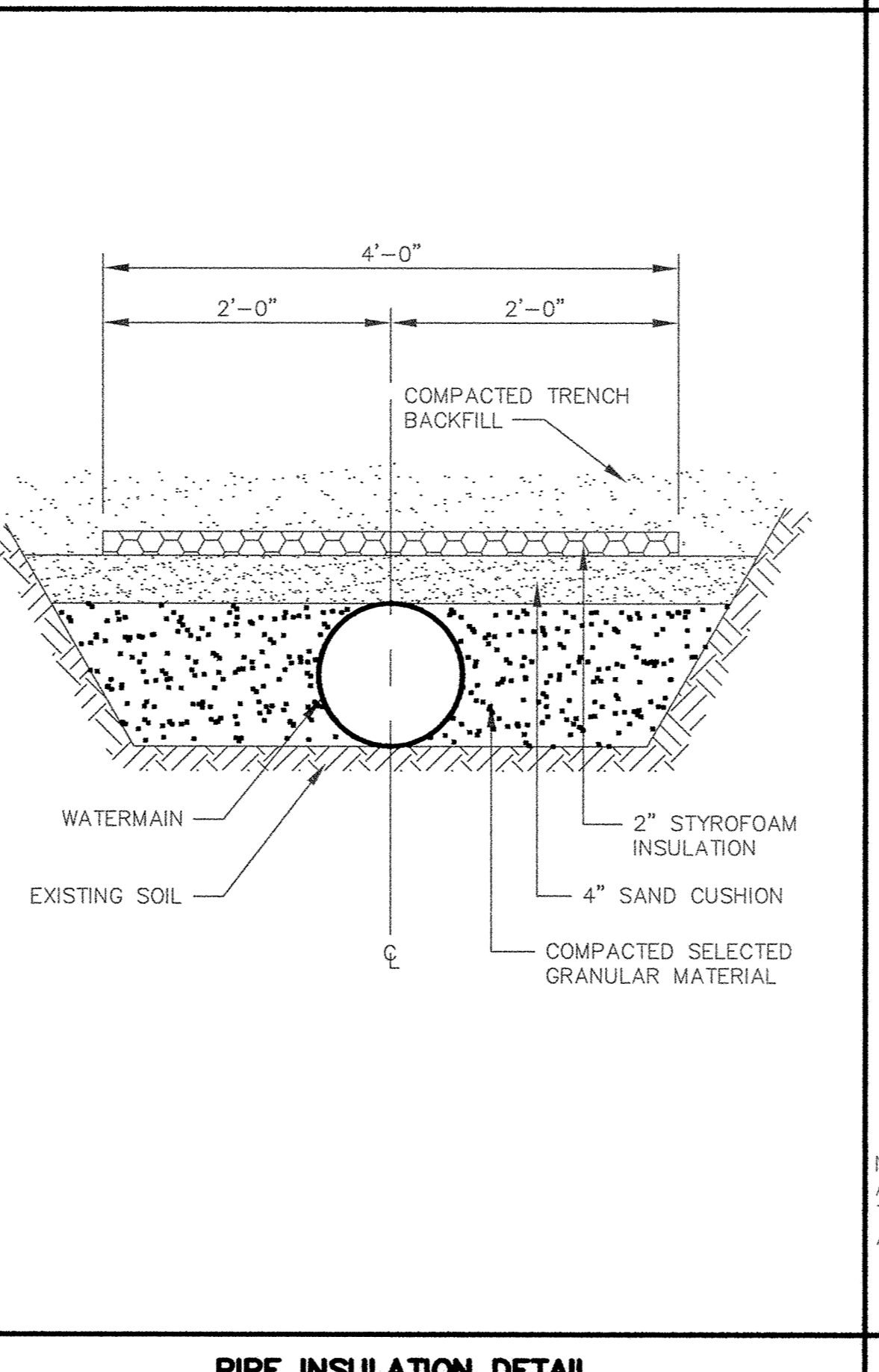
TYPICAL WATER LAYOUT



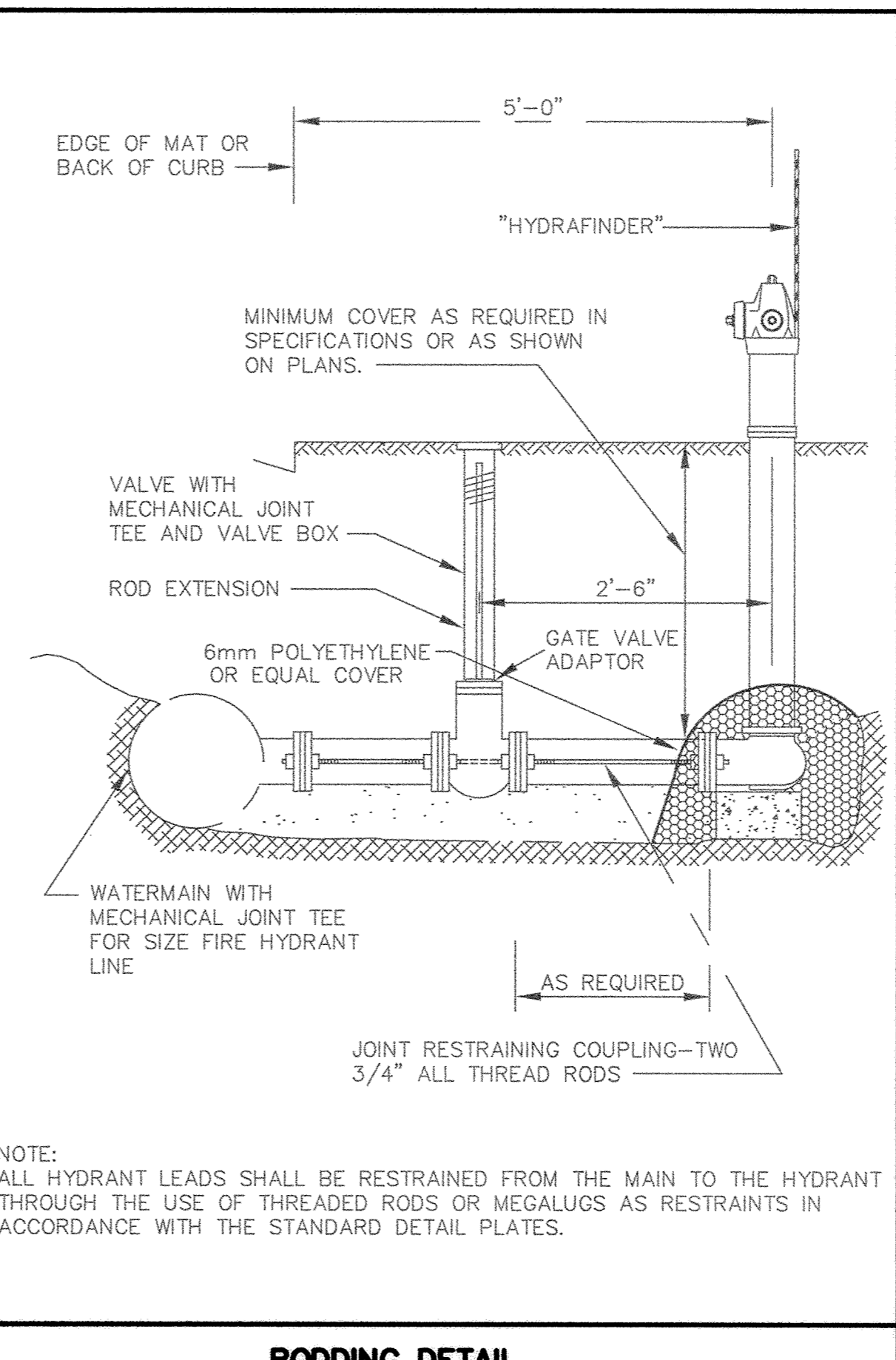
PACER HYDRANT DETAIL



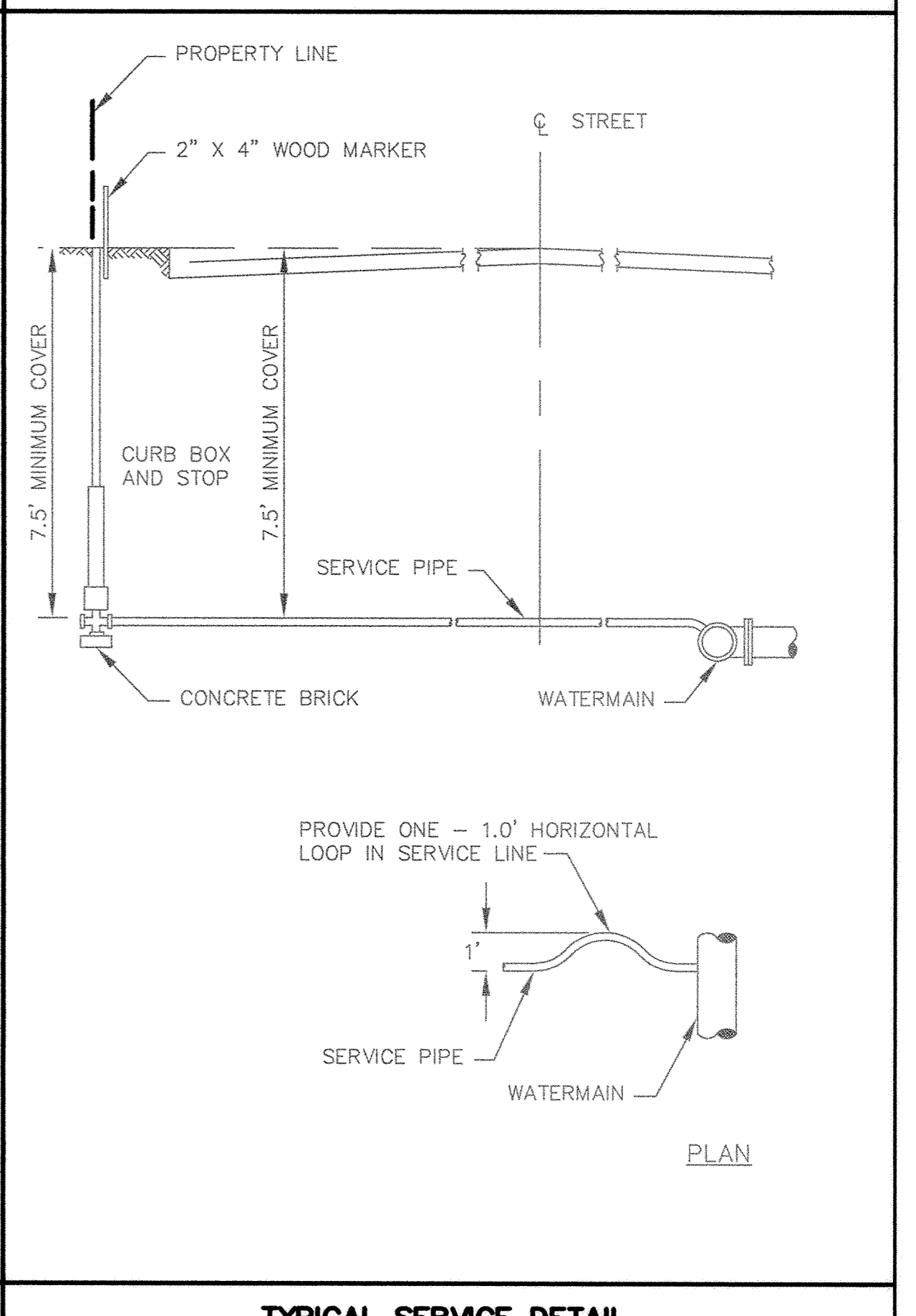
WATERMAIN CROSSING



PIPE INSULATION DETAIL



RODDING DETAIL



TYPICAL SERVICE DETAIL

DESIGNED BY: EY DRAWN BY: EY  
 APPROVED BY: TJM JOB NUMBER 812591J  
 CAD DATE: January 08, 2003 8:10:13 a.m.  
 CAD FILE: 812591J\dwg\812591-D2.DWG (JLALLEN)

I HEREBY CERTIFY THAT THIS PLAN, SPECIFICATION, OR REPORT WAS PREPARED BY ME OR UNDER MY DIRECT SUPERVISION AND THAT I AM A DULY LICENSED PROFESSIONAL ENGINEER UNDER THE LAWS OF THE STATE OF MINNESOTA.  
 SIGNATURE: \_\_\_\_\_ DATE: \_\_\_\_\_  
 PRINTED NAME: TERRY J. MAURER LIC. NO. 15316

NO.	DATE	BY	REVISION DESCRIPTION

1326 ENERGY PARK DRIVE  
 ST. PAUL, MINNESOTA 55108  
 (612) 644-4389  
  
**Howard R. Green Company**  
 CONSULTING ENGINEERS

HILLSDALE 8TH FIRST ADDITION  
 CITY OF ELK RIVER

BALDWIN COURT  
 WATERMAIN DETAILS

SHEET NO.  
**D2**