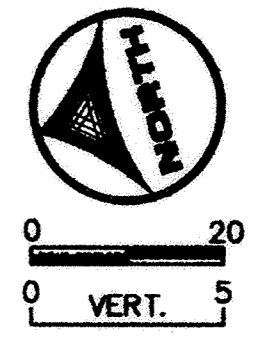
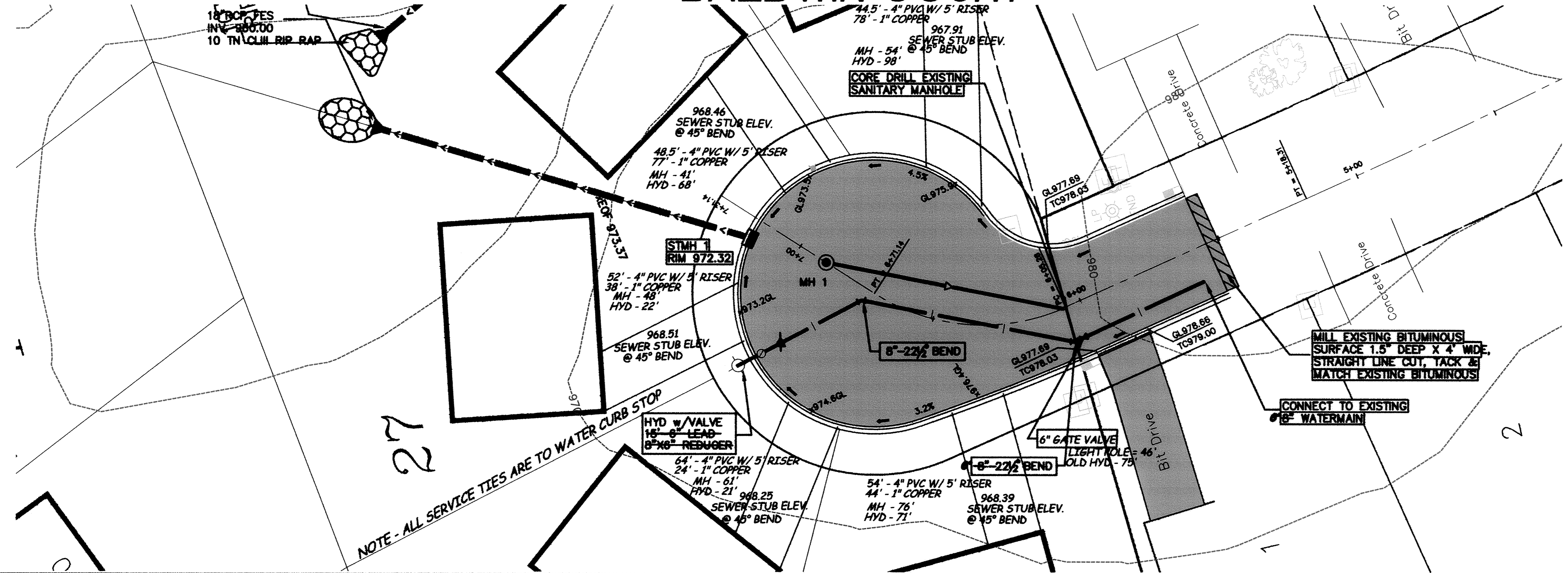


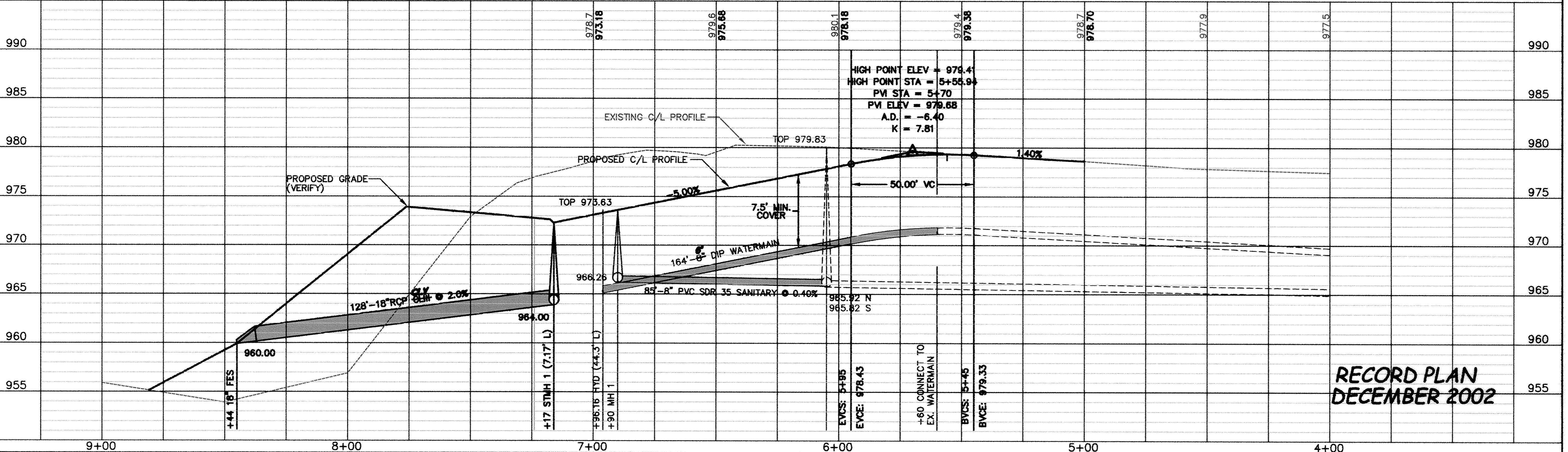
BALDWIN COURT



NOTE - ALL SERVICE TIES ARE TO WATER CURB STOP

MILL EXISTING BITUMINOUS SURFACE 1.5" DEEP X 4' WIDE. STRAIGHT LINE CUT, TACK & MATCH EXISTING BITUMINOUS

CONNECT TO EXISTING 6" WATERMAIN



RECORD PLAN
DECEMBER 2002

DESIGNED BY: _____ DRAWN BY: EY
 APPROVED BY: _____ JOB NUMBER 812591J
 CAD DATE: December 27, 2002 4:33:14 p.m.
 CAD FILE: 812591\dwg\xct-base.dwg

I HEREBY CERTIFY THAT THIS PLAN, SPECIFICATION, OR REPORT WAS PREPARED BY ME OR UNDER MY DIRECT SUPERVISION AND THAT I AM A DULY LICENSED PROFESSIONAL ENGINEER UNDER THE LAWS OF THE STATE OF MINNESOTA.

SIGNATURE _____ DATE _____
 PRINTED NAME TERRY J. MAURER LIC. NO. 15316

NO.	DATE	BY	REVISION DESCRIPTION

1326 ENERGY PARK DRIVE
 ST. PAUL, MINNESOTA 55108
 (651) 644-4389

Howard R. Green Company
 CONSULTING ENGINEERS

HILLSIDE 8TH FIRST ADDITION
 CITY OF ELK RIVER

BALDWIN COURT
 STREET AND UTILITY IMPROVEMENTS
 5+00 TO 9+00

SHEET NO.
4