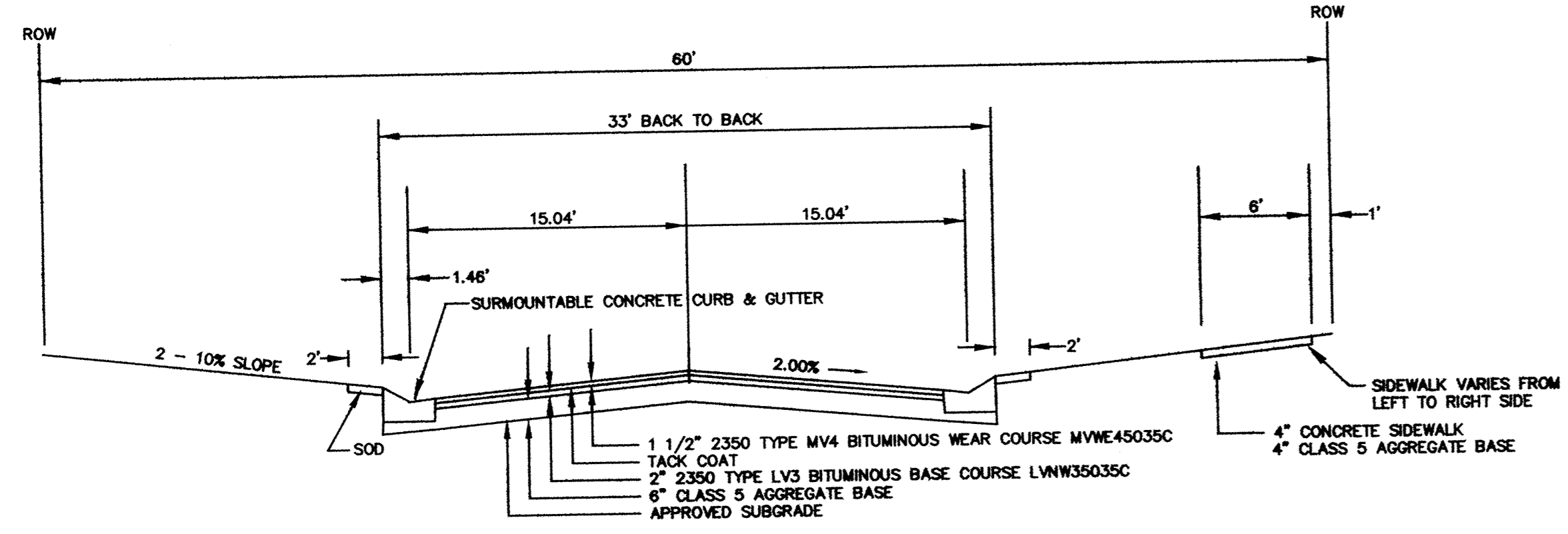
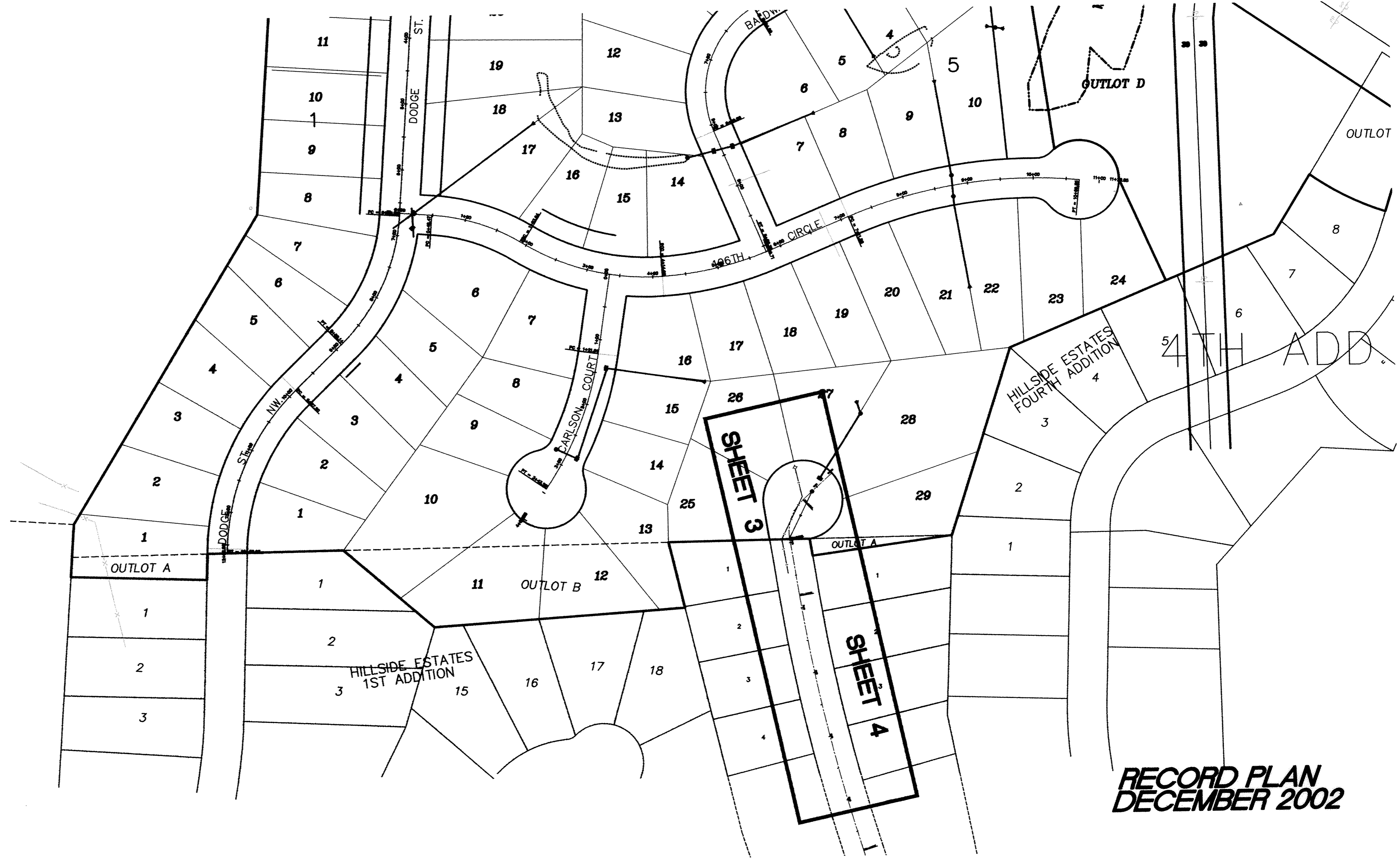


SAECO PRODUCTS • NEW HOPE, MINNESOTA  
REVISION BY PART NUMBER 8552  
SAECO PRODUCTS • NEW HOPE, MINNESOTA  
REVISION BY PART NUMBER 8552  
SAECO PRODUCTS • NEW HOPE, MINNESOTA  
REVISION BY PART NUMBER 8552  
SAECO PRODUCTS • NEW HOPE, MINNESOTA  
REVISION BY PART NUMBER 8552



TYPICAL STREET SECTION

- NOTE:
- B618 CONCRETE CURB AND GUTTER SHALL BE PLACED AT STORM SEWER STRUCTURES.
  - ACCESS MUST BE MAINTAINED TO ALL EXISTING HOUSES IN THE DEVELOPMENT.



RECORD PLAN  
DECEMBER 2002

DESIGNED BY: EY      DRAWN BY: EY  
 APPROVED BY: TJM      JOB NUMBER 812591J  
 CAD DATE: January 08, 2003 7:59:11 a.m.  
 CAD FILE: 812591J\dwg\812591-TYP.DWG (JLALLEN)

I HEREBY CERTIFY THAT THIS PLAN, SPECIFICATION, OR REPORT WAS PREPARED BY ME OR UNDER MY DIRECT SUPERVISION AND THAT I AM A DULY LICENSED PROFESSIONAL ENGINEER UNDER THE LAWS OF THE STATE OF MINNESOTA.

SIGNATURE \_\_\_\_\_ DATE \_\_\_\_\_  
 PRINTED NAME: TERRY J. MAURER      LIC. NO. 15316

NO.	DATE	BY	REVISION DESCRIPTION

1326 ENERGY PARK DRIVE  
 ST. PAUL, MINNESOTA 55108  
 (612) 644-4389

**Howard R. Green Company**  
 CONSULTING ENGINEERS

**HILLSIDE 8TH FIRST ADDITION**  
 CITY OF ELK RIVER

BALDWIN COURT  
 LOCATION MAP AND TYPICAL SECTION

SHEET NO.  
**2**