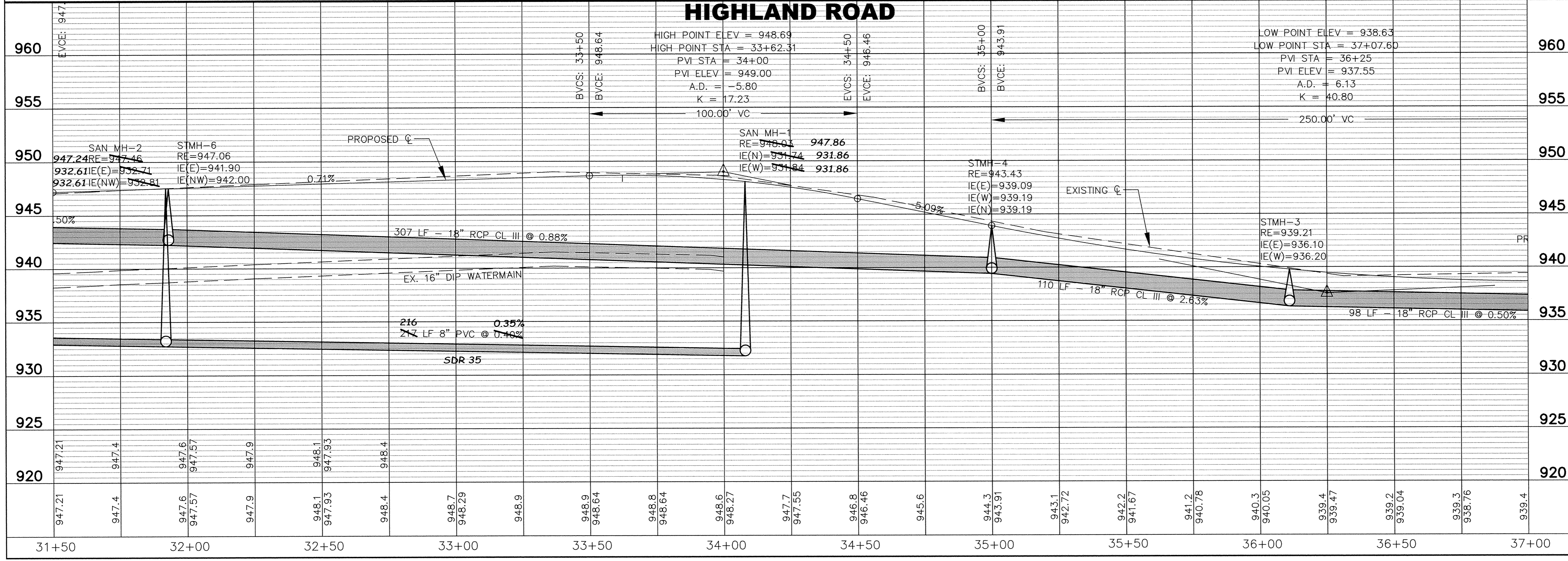
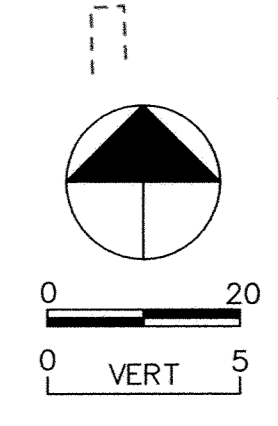


- NOTES:
- SANITARY SEWER SERVICES SHALL BE EXTENDED TO PROPERTIES ADJACENT TO HIGHLAND ROAD. LOCATIONS SHALL BE DETERMINED IN THE FIELD BY THE ENGINEER.
 - WATERMAIN SERVICES SHALL BE EXTENDED FROM THE EXISTING WATERMAIN TO PROPERTIES ADJACENT TO HIGHLAND ROAD. LOCATIONS SHALL BE DETERMINED IN THE FIELD BY THE ENGINEER.

NO.	DATE	DESCRIPTION

I HEREBY CERTIFY THAT THIS PLAN, SPECIFICATION, OR REPORT WAS PREPARED BY ME OR UNDER MY DIRECT SUPERVISION AND THAT I AM A DULY LICENSED PROFESSIONAL ENGINEER UNDER THE LAWS OF THE STATE OF MINNESOTA.

DATE: 05-02-2006
 LIC. NO.: 15316



RECORD PLAN
HIGHLAND ROAD IMPROVEMENTS
SANITARY SEWER AND WATERMAIN
HIGHLAND ROAD
 32+00 TO 36+00
 SAP 204-137-001

BDM
 CONSULTING ENGINEERS, PLC
 Engineers and Surveyors
 4175 Lovell Road, Suite 112
 Lexington, MN 55014
 Phone: (763) 786-4570
 Fax: (763) 786-4574
 bdmce.com

DRAWN BY: NAB	
CHECKED BY: KJT	
DESIGNED BY: KJT	
JOB NO. 226068D	
SHEET 37	SHEETS 55