

SAPCO PRODUCTS • NEW HOPE, MINNESOTA
REPRODUCED BY PLAN NUMBER 8832

REVISIONS	NO.	DATE	DESCRIPTION

I HEREBY CERTIFY THAT THIS PLAN, SPECIFICATION, OR REPORT WAS PREPARED BY ME OR UNDER MY DIRECT SUPERVISION AND THAT I AM A DULY LICENSED PROFESSIONAL ENGINEER UNDER THE LAWS OF THE STATE OF MINNESOTA.

DATE: 05-02-2006
LIC. NO.: 15316

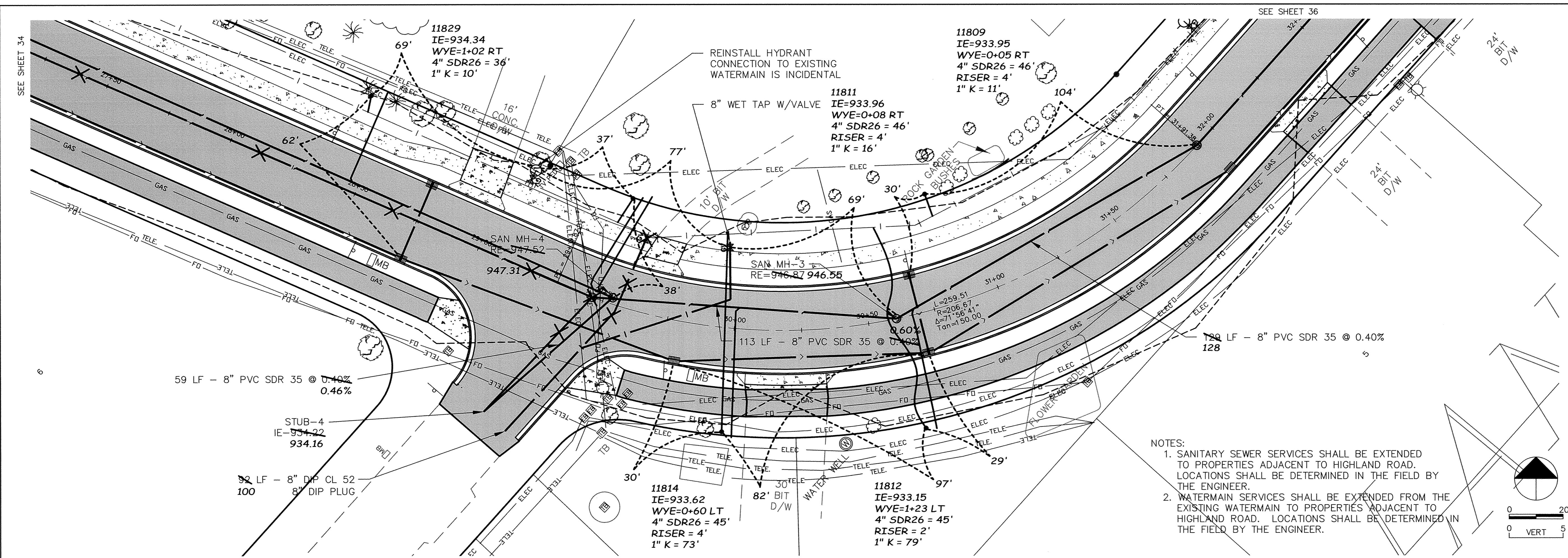
SAP 204-137-001
28+00 TO 32+00

RECORD PLAN
HIGHLAND ROAD IMPROVEMENTS
SANITARY SEWER AND WATERMAIN
HIGHLAND ROAD

BDM
CONSULTING ENGINEERS, PLC
Engineers and Surveyors
4175 Lovell Road, Suite 112
Lexington, MN 55014
Phone: (763) 786-4570
Fax: (763) 786-4574
bdmce.com

DRAWN BY: NAB
CHECKED BY: KJT
DESIGNED BY: KJT
JOB NO. 226068D

SHEET **36** SHEETS **55**



- NOTES:
- SANITARY SEWER SERVICES SHALL BE EXTENDED TO PROPERTIES ADJACENT TO HIGHLAND ROAD. LOCATIONS SHALL BE DETERMINED IN THE FIELD BY THE ENGINEER.
 - WATERMAIN SERVICES SHALL BE EXTENDED FROM THE EXISTING WATERMAIN TO PROPERTIES ADJACENT TO HIGHLAND ROAD. LOCATIONS SHALL BE DETERMINED IN THE FIELD BY THE ENGINEER.

