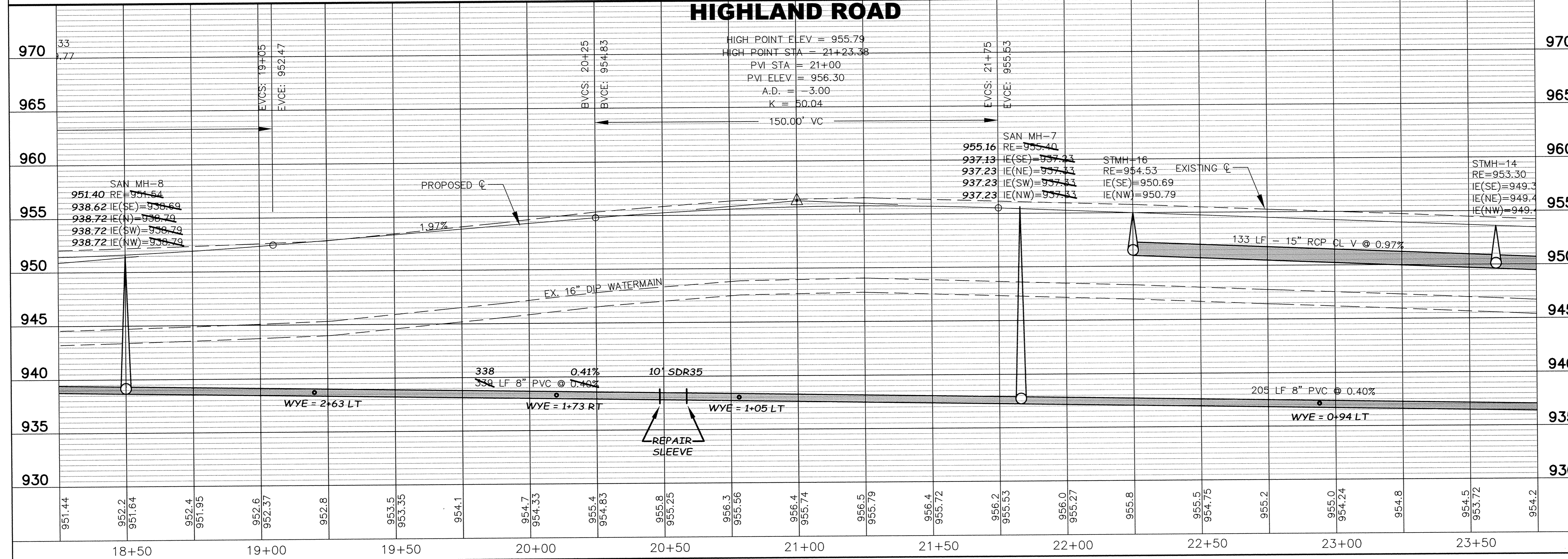


NOTES:
 1. SANITARY SEWER SERVICES SHALL BE EXTENDED TO PROPERTIES ADJACENT TO HIGHLAND ROAD. LOCATIONS SHALL BE DETERMINED IN THE FIELD BY THE ENGINEER.
 2. WATERMAIN SERVICES SHALL BE EXTENDED FROM THE EXISTING WATERMAIN TO PROPERTIES ADJACENT TO HIGHLAND ROAD. LOCATIONS SHALL BE DETERMINED IN THE FIELD BY THE ENGINEER.

HIGHLAND ROAD



NO.	DATE	DESCRIPTION

I HEREBY CERTIFY THAT THIS PLAN, SPECIFICATION, OR REPORT WAS PREPARED BY ME OR UNDER MY DIRECT SUPERVISION AND THAT I AM A DULY LICENSED PROFESSIONAL ENGINEER UNDER THE LAWS OF THE STATE OF MINNESOTA.

DATE: 05-02-2006
 L.C. NO.: 15316

SAP 204-137-001

RECORD PLAN

HIGHLAND ROAD IMPROVEMENTS

SANITARY SEWER AND WATERMAIN

HIGHLAND ROAD

18+50 TO 23+00

BDM
 CONSULTING ENGINEERS, PLC
 Engineers and Surveyors
 4175 Lowell Road, Suite 112
 Lexington, MN 55014
 Phone: (763) 786-4570
 Fax: (763) 786-4574
 bdmce.com

DRAWN BY: NAB	
CHECKED BY: KJT	
DESIGNED BY: KJT	
JOB NO. 226068D	
SHEET 34	SHEETS 55