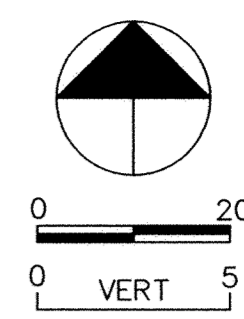


12155
 IE=930.65
 WYE=0+30 LT
 4" SDR26 = 45'
 1" K = 30'

- NOTES:
- SANITARY SEWER SERVICES SHALL BE EXTENDED TO PROPERTIES ADJACENT TO HIGHLAND ROAD. LOCATIONS SHALL BE DETERMINED IN THE FIELD BY THE ENGINEER.
 - WATERMAIN SERVICES SHALL BE EXTENDED FROM THE EXISTING WATERMAIN TO PROPERTIES ADJACENT TO HIGHLAND ROAD. LOCATIONS SHALL BE DETERMINED IN THE FIELD BY THE ENGINEER.

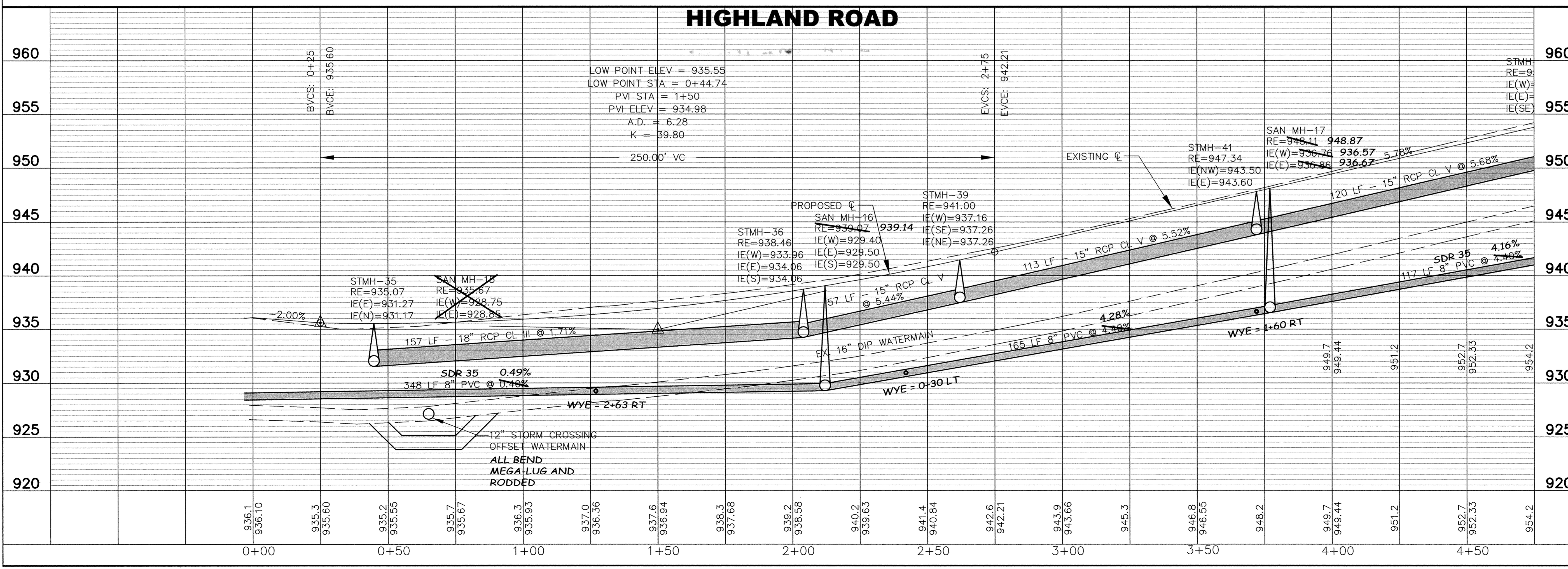


REVISIONS	NO.	DATE	DESCRIPTION	BY	CHANGE ORDER #1
	1	06/28/06			

I HEREBY CERTIFY THAT THIS PLAN, SPECIFICATION, OR REPORT WAS PREPARED BY ME OR UNDER MY DIRECT SUPERVISION AND THAT I AM A DULY LICENSED PROFESSIONAL ENGINEER UNDER THE LAWS OF THE STATE OF MINNESOTA.

DATE: 05-02-2006
 LIC. NO.: 15316

SAP 204-137-001
RECORD PLAN
HIGHLAND ROAD IMPROVEMENTS
SANITARY SEWER AND WATERMAIN
HIGHLAND ROAD
 0+00 TO 4+50



HIGHLAND ROAD

960
 955
 950
 945
 940
 935
 930
 925
 920

BDM
 CONSULTING ENGINEERS, P.L.C.
 Engineers and Surveyors
 4175 Lovell Road, Suite 112
 Lexington, MN 55014
 Phone: (763) 786-4570
 Fax: (763) 786-4574
 bdmce.com

DRAWN BY: NAB
 CHECKED BY: KJT
 DESIGNED BY: KJT
 JOB NO. 226068D

SHEET **30** SHEETS **55**