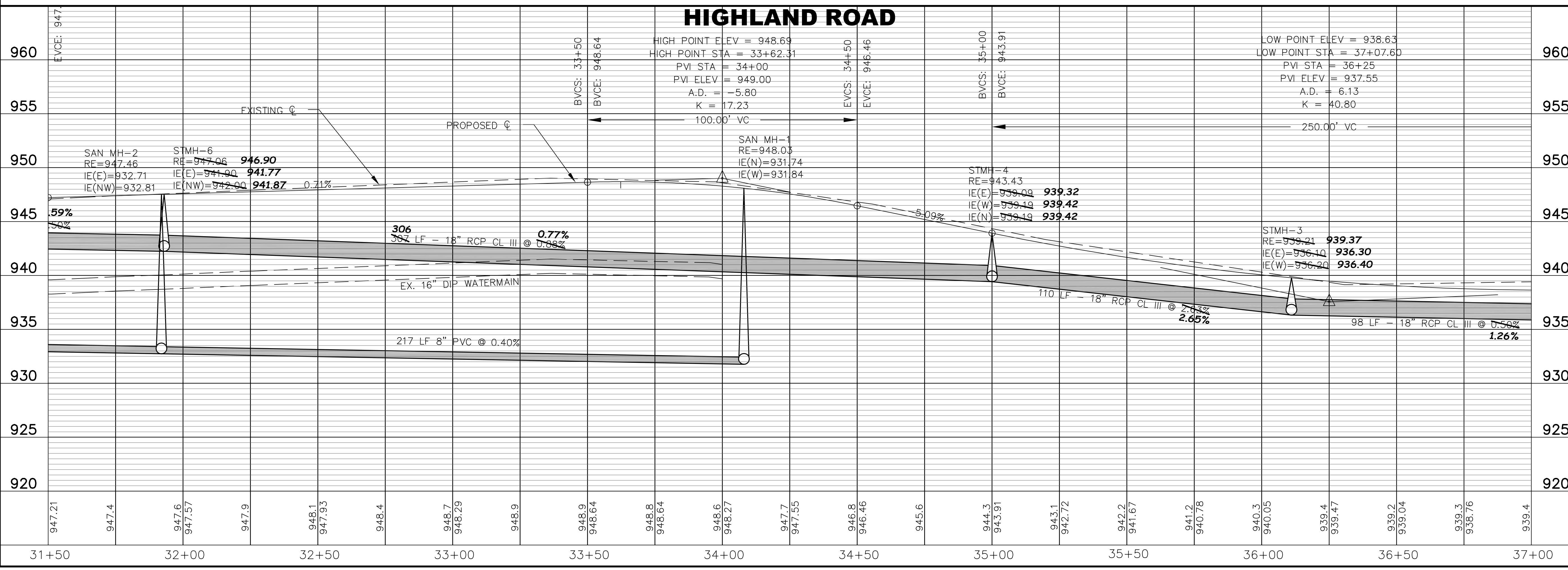
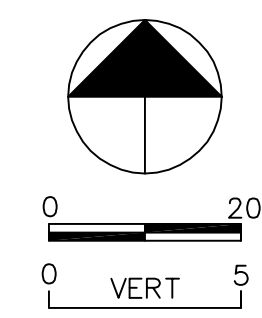


NO.	DATE	BY	DESCRIPTION
1	06/28/06	NB	CHANGE ORDER #1

I HEREBY CERTIFY THAT THIS PLAN, SPECIFICATION, REPORT, WAS PREPARED BY ME OR UNDER MY DIRECT SUPERVISION AND THAT I AM A LICENSED PROFESSIONAL ENGINEER UNDER THE LAWS OF THE STATE OF MINNESOTA.

DATE: 05-02-2006
LIC. NO. 15316

- NOTES:
1. ALL SALVAGE MAILBOXES SHALL BE INSTALLED AT THE SAME LOCATION AS DIRECTED BY THE POSTMASTER.
 2. CONTRACTOR SHALL COORDINATE WITH UTILITY COMPANIES FOR EXACT LOCATIONS OF UTILITIES.



RECORD PLAN
HIGHLAND ROAD IMPROVEMENTS
STREET AND STORM SEWER
HIGHLAND ROAD

BDM
CONSULTING ENGINEERS, PLC
Engineers and Surveyors
4175 Lovell Road, Suite 112
Lexington, MN 55014
Phone: (763) 786-4570
Fax: (763) 786-4574
bdmce.com

DRAWN BY: NAB
CHECKED BY: KJT
DESIGNED BY: KJT
JOB NO. 226068D

SHEET **27** SHEETS **55**