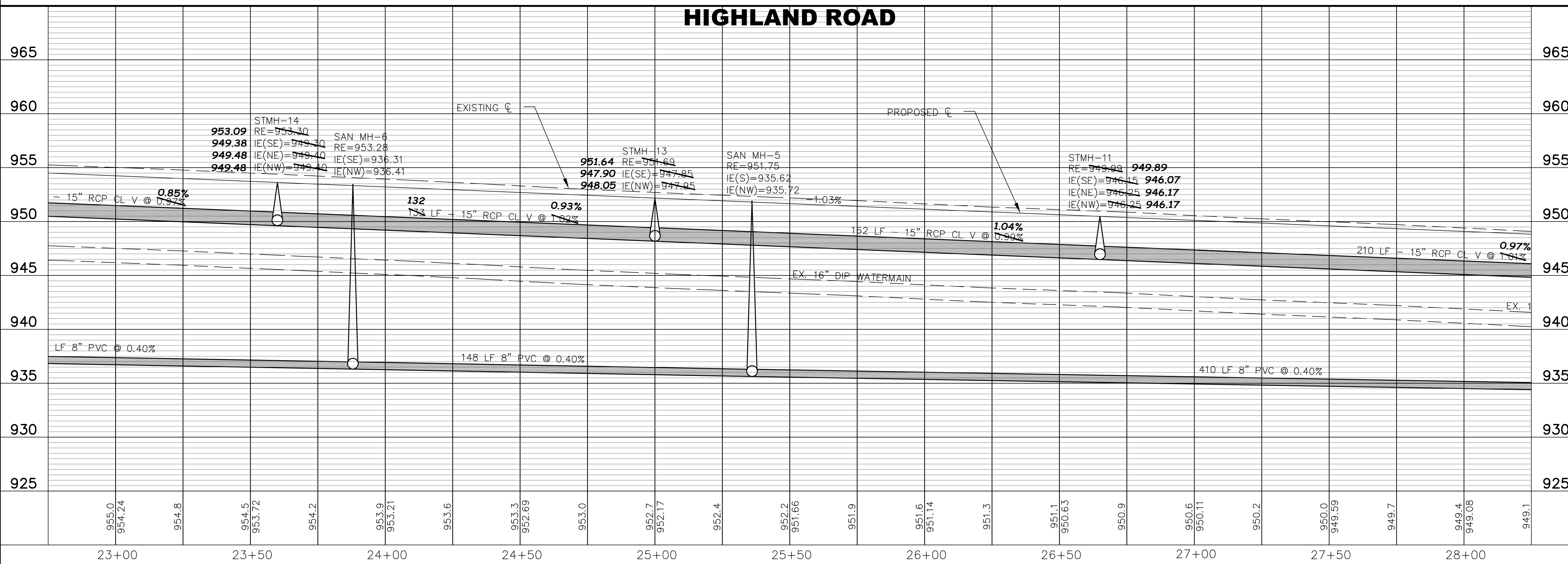
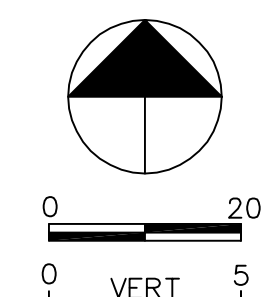


- NOTES:
1. ALL SALVAGE MAILBOXES SHALL BE INSTALLED AT THE SAME LOCATION AS DIRECTED BY THE POSTMASTER.
 2. CONTRACTOR SHALL COORDINATE WITH UTILITY COMPANIES FOR EXACT LOCATIONS OF UTILITIES.



RECORD PLAN
HIGHLAND ROAD IMPROVEMENTS
STREET AND STORM SEWER
HIGHLAND ROAD

SAP 204-137-001

DATE: 05-02-2006
 LIC. NO.: 15316

DATE: 23+00 TO 28+00

BDM
 CONSULTING ENGINEERS, PLC
 Engineers and Surveyors
 4175 Lovell Road, Suite 112
 Lexington, MN 55014
 Phone: (763) 786-4570
 Fax: (763) 786-4574
 bdmce.com

DRAWN BY: NAB
 CHECKED BY: KJT
 DESIGNED BY: KJT
 JOB NO. 226068D

SHEET **25** SHEETS **55**

NO.	DATE	BY	DESCRIPTION

I HEREBY CERTIFY THAT THIS PLAN, SPECIFICATION, REPORT, WAS PREPARED BY ME OR UNDER MY DIRECT SUPERVISION AND THAT I AM A LICENSED PROFESSIONAL ENGINEER UNDER THE LAWS OF THE STATE OF MINNESOTA.