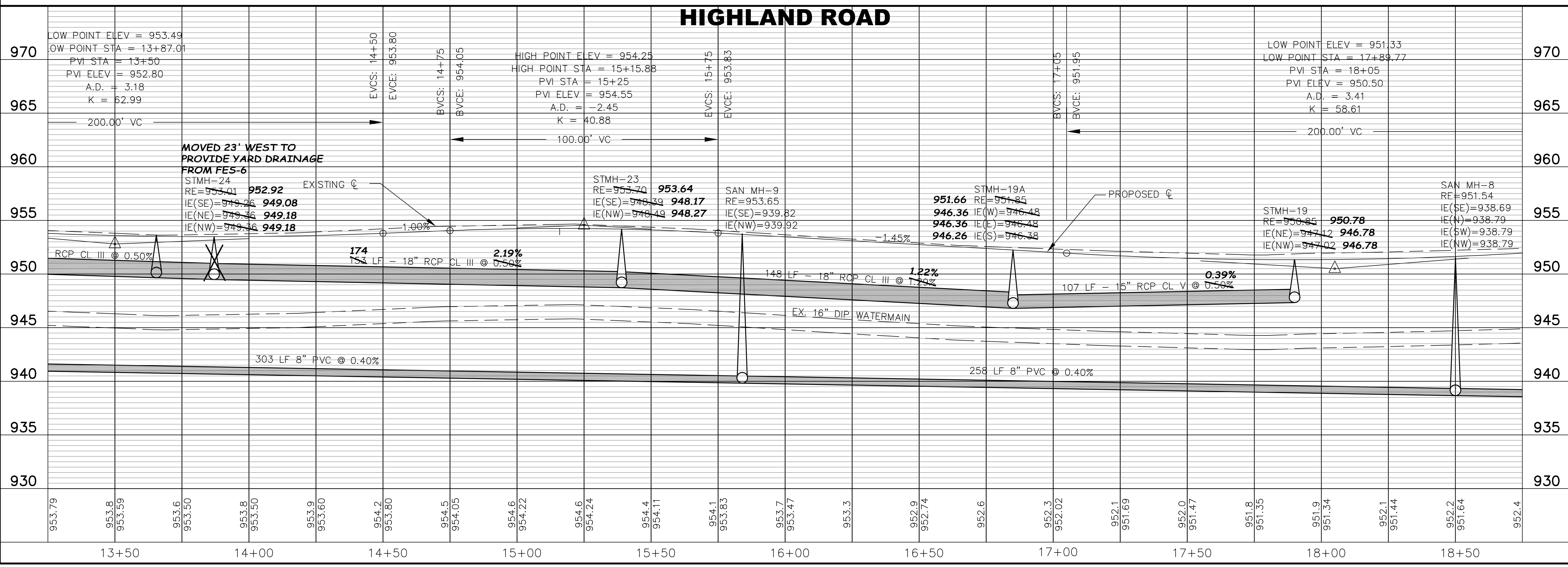


NOTES:
 1. ALL SALVAGE MAILBOXES SHALL BE INSTALLED AT THE SAME LOCATION AS DIRECTED BY THE POSTMASTER.
 2. CONTRACTOR SHALL COORDINATE WITH UTILITY COMPANIES FOR EXACT LOCATIONS OF UTILITIES.



SEE SHEET 22

SEE SHEET 24

I HEREBY CERTIFY THAT THIS PLAN, SPECIFICATION, REPORT, WAS PREPARED BY ME OR UNDER MY DIRECT SUPERVISION AND THAT I AM A LICENSED PROFESSIONAL ENGINEER UNDER THE LAWS OF THE STATE OF MINNESOTA.

NO. DATE BY DESCRIPTION
 2 07/14/06 NB STORM MH 19A CHANGES

SAP 204-137-001

DATE 05-02-2006 15316 LIC. NO.

13+50 TO 18+50

RECORD PLAN

HIGHLAND ROAD IMPROVEMENTS

STREET AND STORM SEWER

HIGHLAND ROAD

BDM
 CONSULTING ENGINEERS, PLC
 Engineers and Surveyors
 4175 Lovell Road, Suite 112
 Lexington, MN 55014
 Phone: (763) 786-4570
 Fax: (763) 786-4574
 bdmce.com

DRAWN BY: NAB
 CHECKED BY: KJT
 DESIGNED BY: KJT
 JOB NO. 226068D

SHEET **23** SHEETS **55**