

NOTES:
 1. ALL SALVAGE MAILBOXES SHALL BE INSTALLED AT THE SAME LOCATION AS DIRECTED BY THE POSTMASTER.
 2. CONTRACTOR SHALL COORDINATE WITH UTILITY COMPANIES FOR EXACT LOCATIONS OF UTILITIES.

MILL EXISTING BITUMINOUS SURFACE 1.5" DEEP X 4' WIDE STRAIGHT LINE CUT, TACK AND MATCH EXISTING BITUMINOUS TAPER END OF CURB
 GL=958.21

CB-31
 957.96 RE=958.19
 955.16 IE=955.19

CB-33
 958.70 RE=958.80
 955.62 IE=955.70

CB-29
 957.87 RE=957.95
 954.82 IE=954.95

MILL EXISTING BITUMINOUS SURFACE 1.5" DEEP X 4' WIDE STRAIGHT LINE CUT, TACK AND MATCH EXISTING BITUMINOUS TAPER END OF CURB
 GL=958.02

30 LF - 15" RCP CL V @ 2.6%
 1.7%
 TAPER END OF CURB
 GL=957.63

PEDESTRIAN RAMP
 49 LF - 15" RCP CL V @ 2.29%
 1.98%

ADJUST VALVE
 R=474.44
 $\Delta=43'49"50"$
 $\Delta I=190.87$

STMH-28
 RE=957.31 957.18
 IE(N)=954.29 954.15

TAPER END OF CURB
 GL=957.40
 33 LF - 15" RCP CL V @ 2.0%
 1.78%

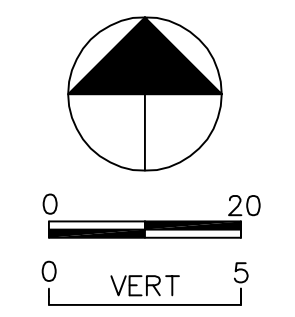
STMH-30
 RE=957.94 957.51
 IE(S)=954.49 954.56
 IE(W)=954.59 954.66

STMH-27
 RE=957.34 957.47

STMH-26
 RE=953.80 950.48
 IE(SE)=949.85 950.48
 IE(NW)=949.95 950.58

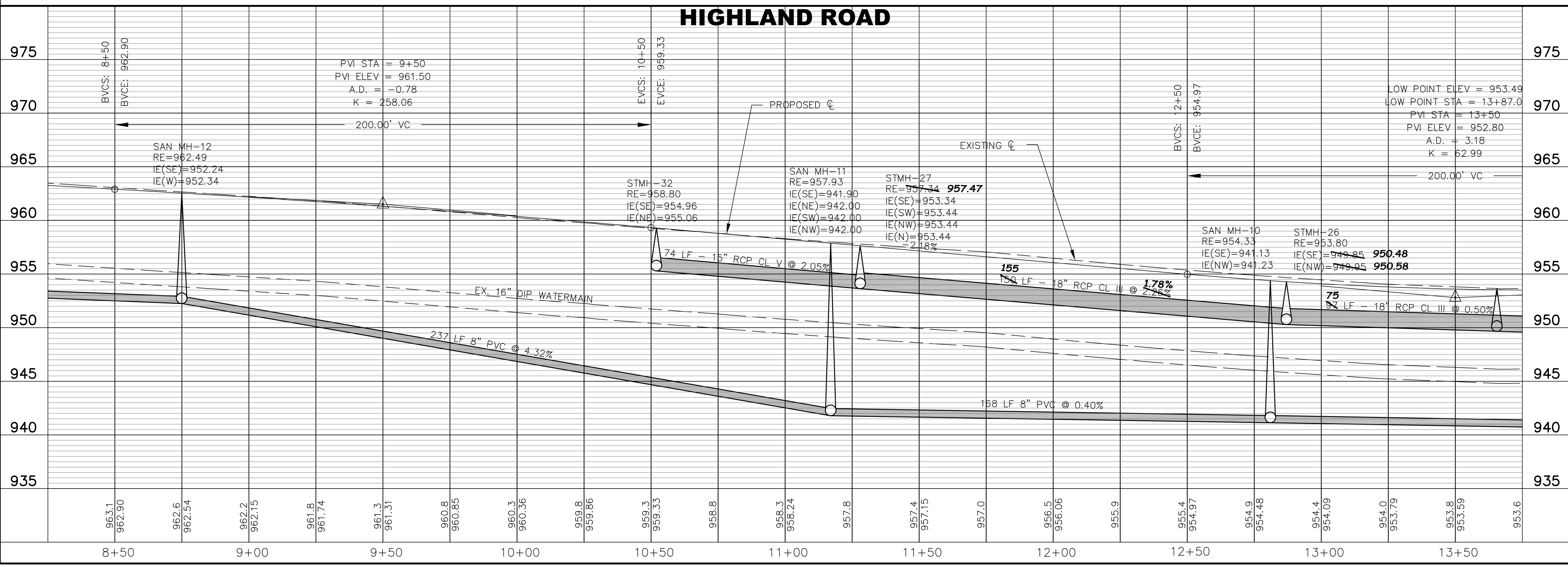
STMH-10
 RE=954.33 950.48
 IE(SE)=941.13 950.48
 IE(NW)=941.23 950.58

STMH-26
 RE=953.80 950.48
 IE(SE)=949.85 950.48
 IE(NW)=949.95 950.58



SEE SHEET 21

SEE SHEET 23



NO.	DATE	BY	DESCRIPTION

I HEREBY CERTIFY THAT THIS PLAN, SPECIFICATION, REPORT, WAS PREPARED BY ME OR UNDER MY DIRECT SUPERVISION AND THAT I AM A LICENSED PROFESSIONAL ENGINEER UNDER THE LAWS OF THE STATE OF MINNESOTA.

DATE: 05-02-2006
 LIC. NO. 15316

SAP 204-137-001

RECORD PLAN

HIGHLAND ROAD IMPROVEMENTS

STREET AND STORM SEWER

HIGHLAND ROAD

9+00 TO 13+50

BDM
 CONSULTING ENGINEERS, PLC
 Engineers and Surveyors
 4175 Lovell Road, Suite 112
 Lexington, MN 55014
 Phone: (763) 786-4570
 Fax: (763) 786-4574
 bdmce.com

DRAWN BY: NAB
 CHECKED BY: KJT
 DESIGNED BY: KJT
 JOB NO. 226068D

SHEET **22** SHEETS **55**