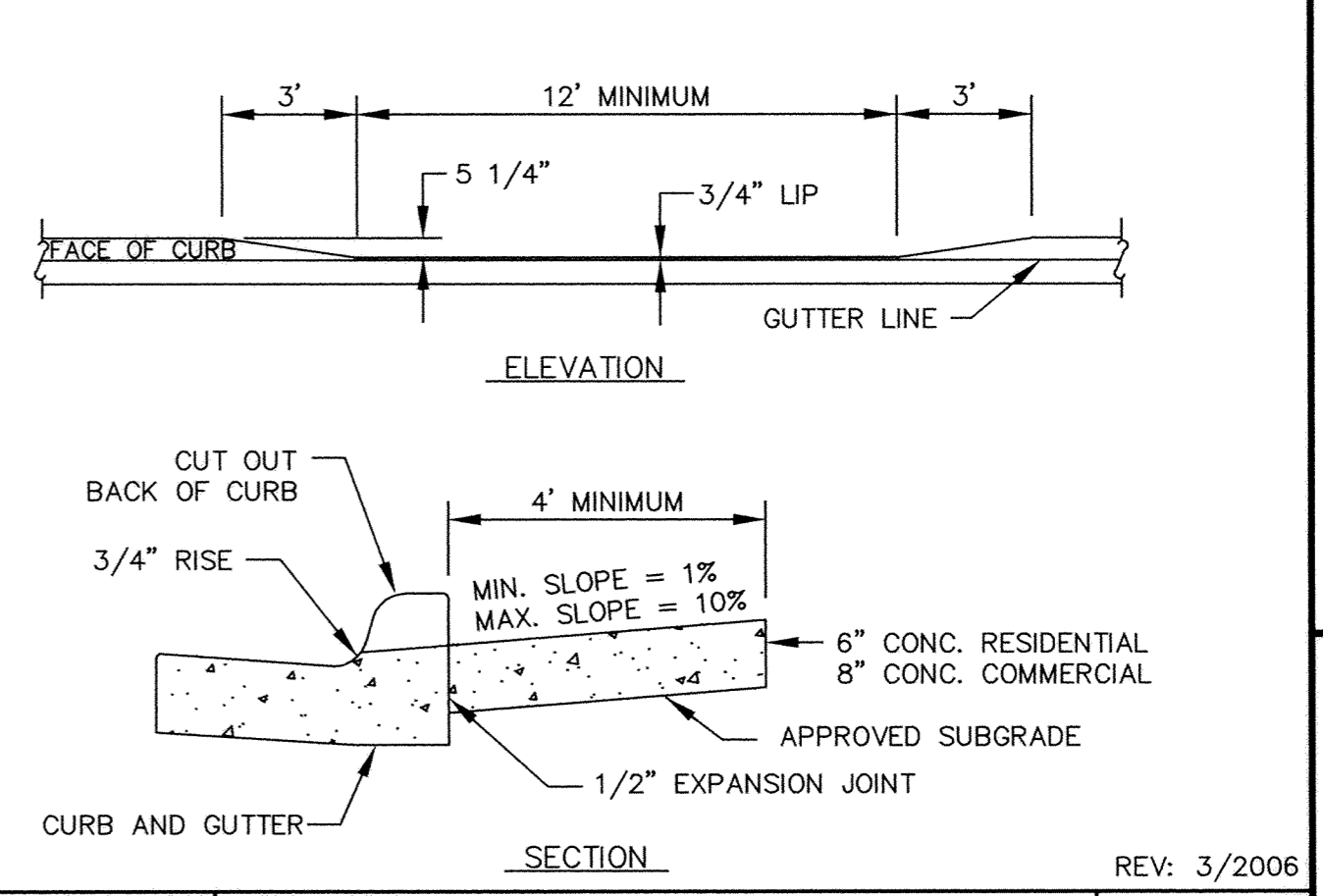
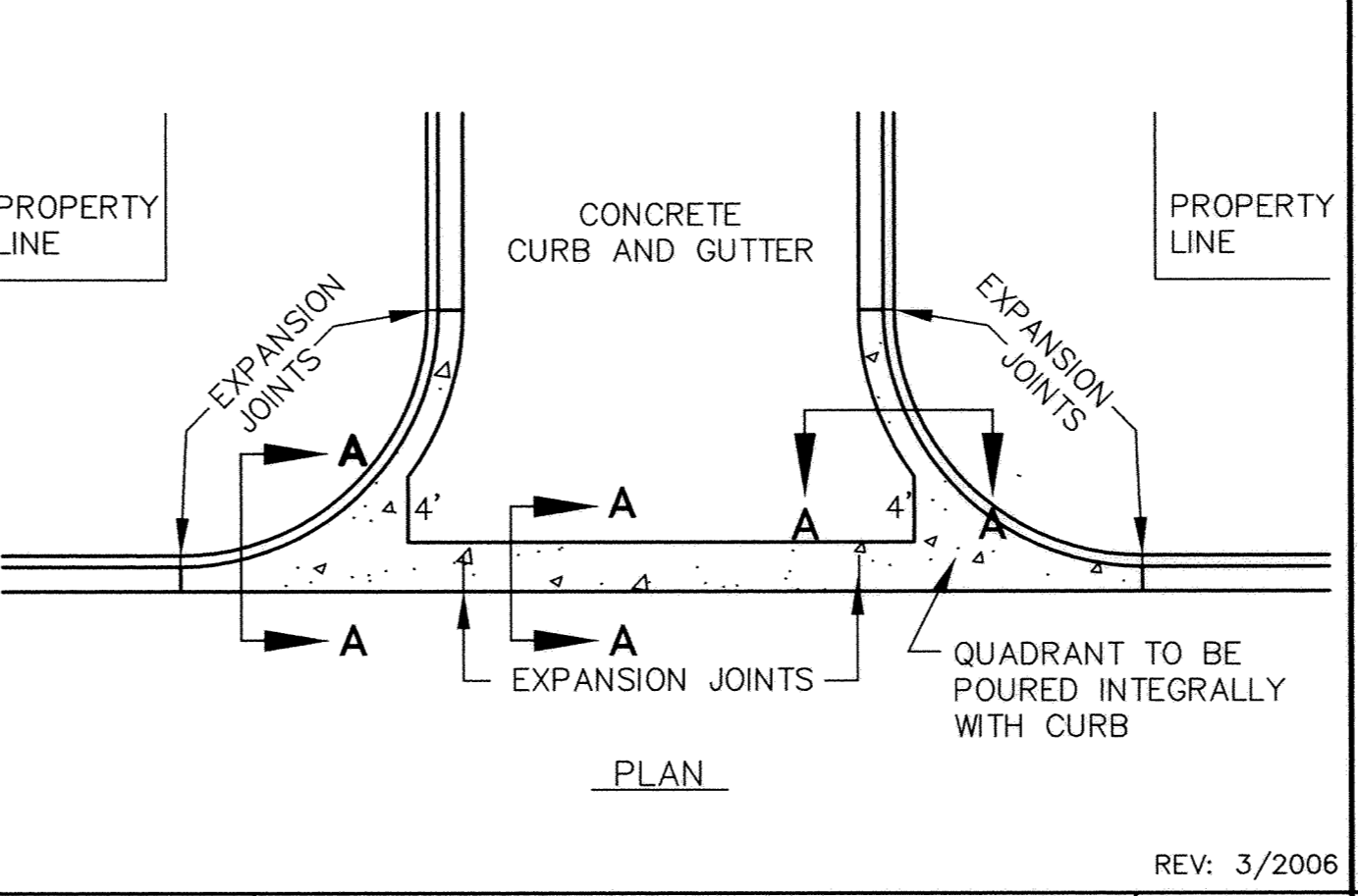
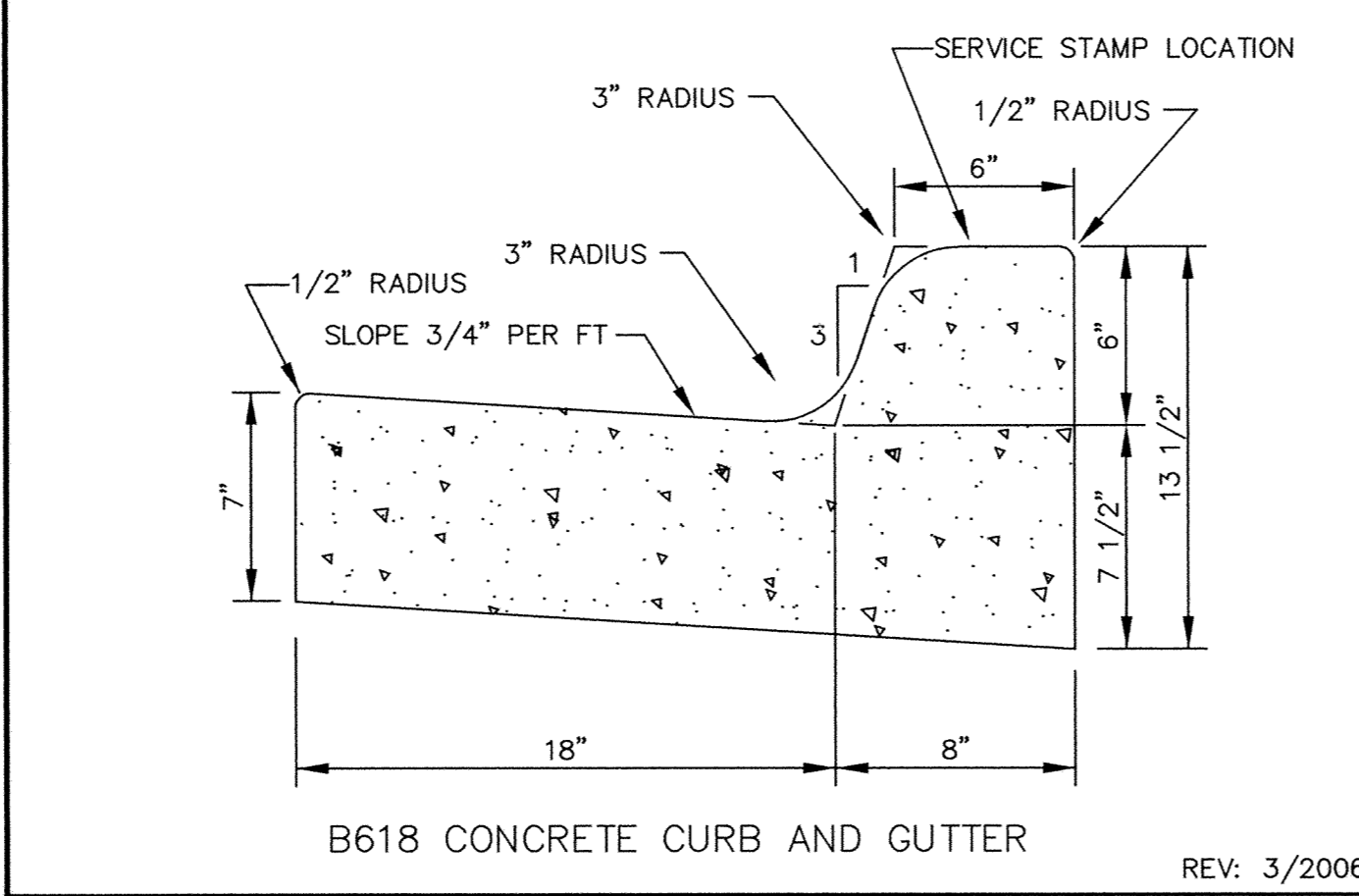
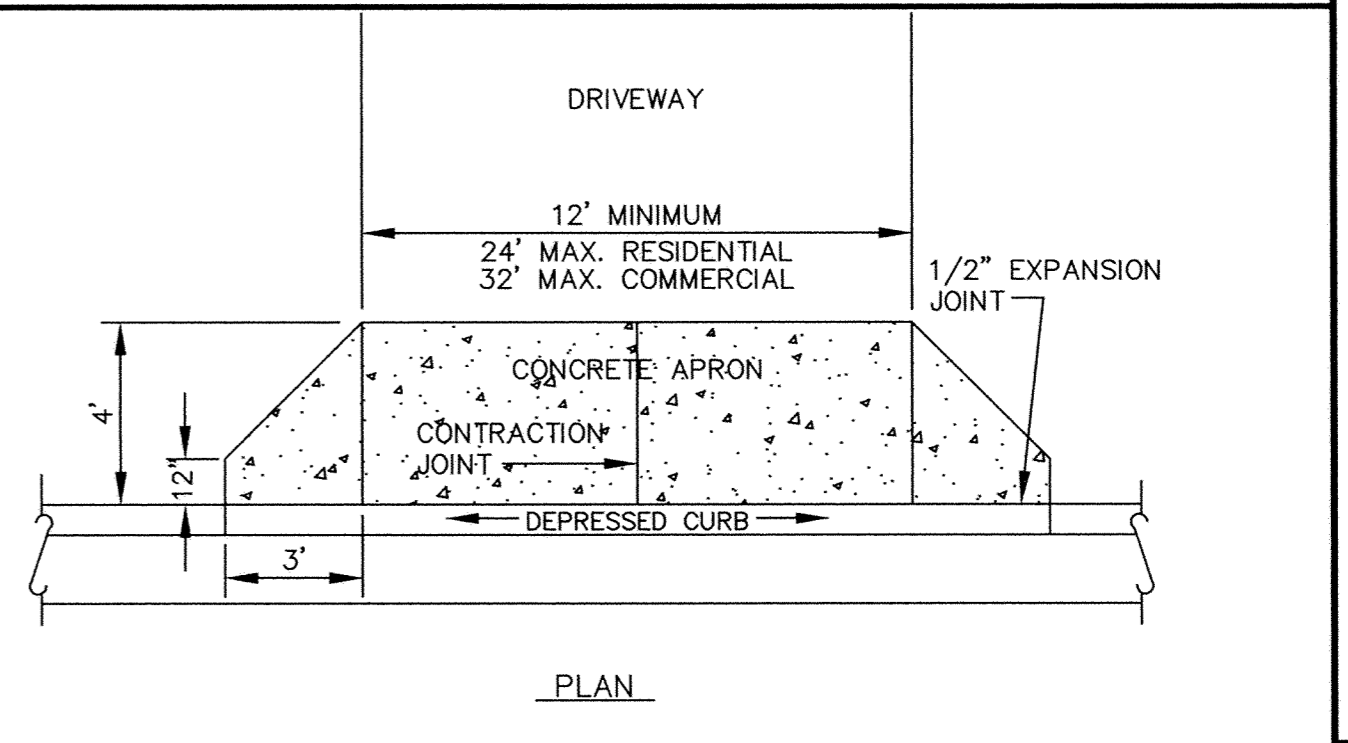
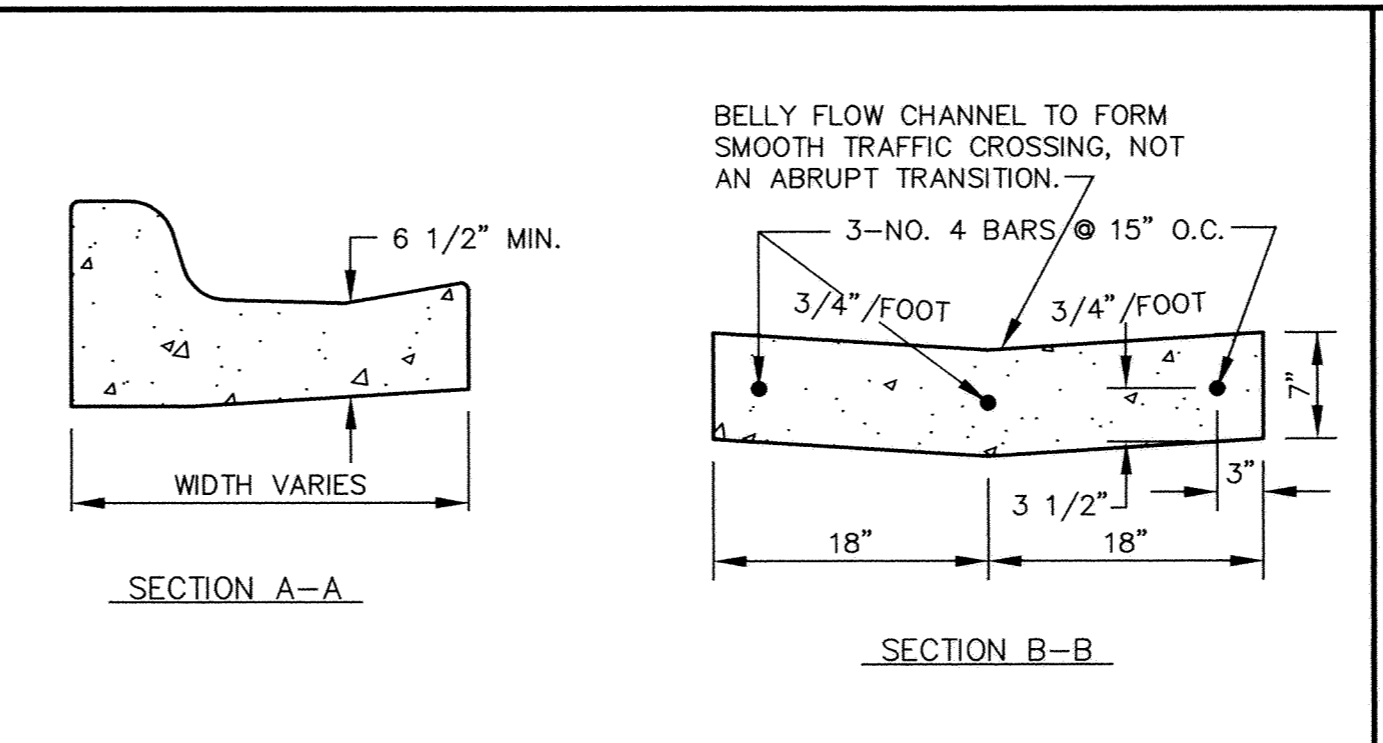
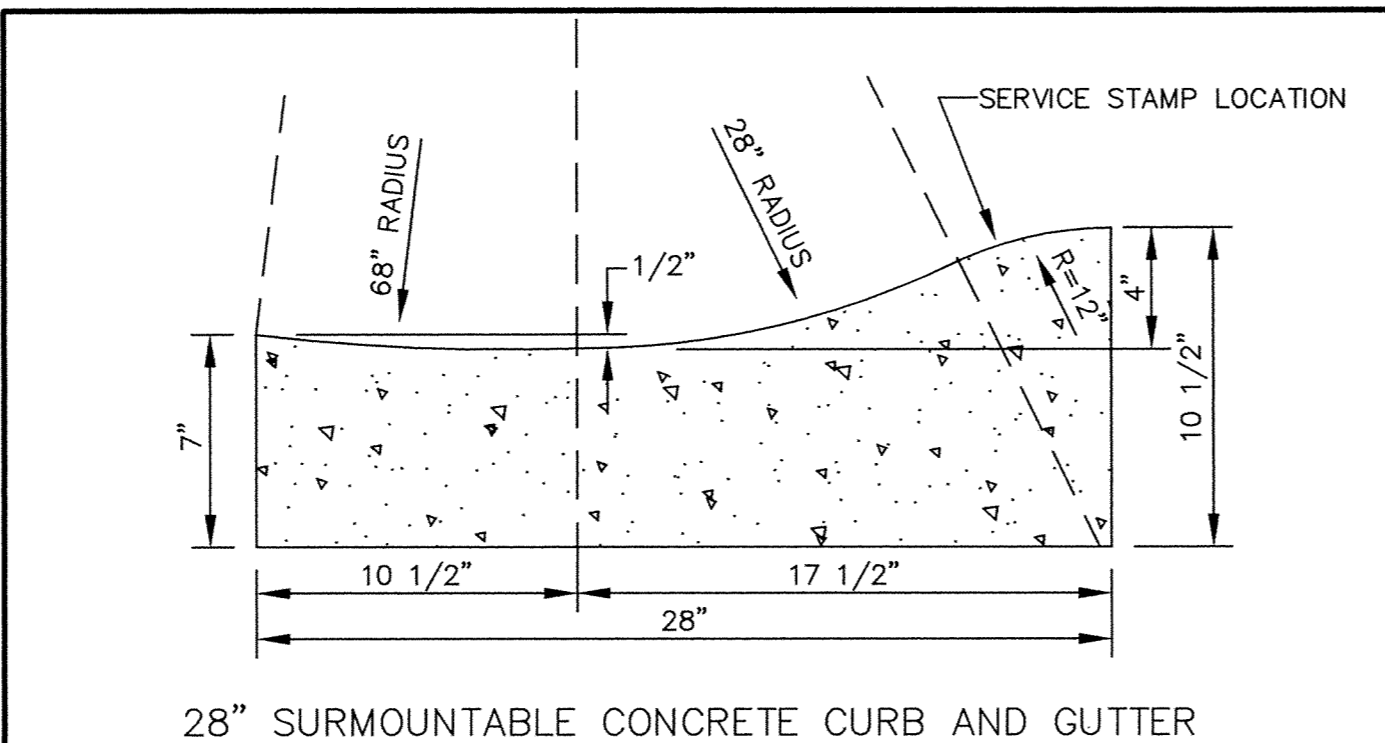


NO.	DATE	BY	DESCRIPTION

I HEREBY CERTIFY THAT THIS PLAN, SPECIFICATION, OR REPORT WAS PREPARED BY ME OR UNDER MY DIRECT SUPERVISION AND THAT I AM A DULY LICENSED PROFESSIONAL ENGINEER UNDER THE LAWS OF THE STATE OF MINNESOTA.

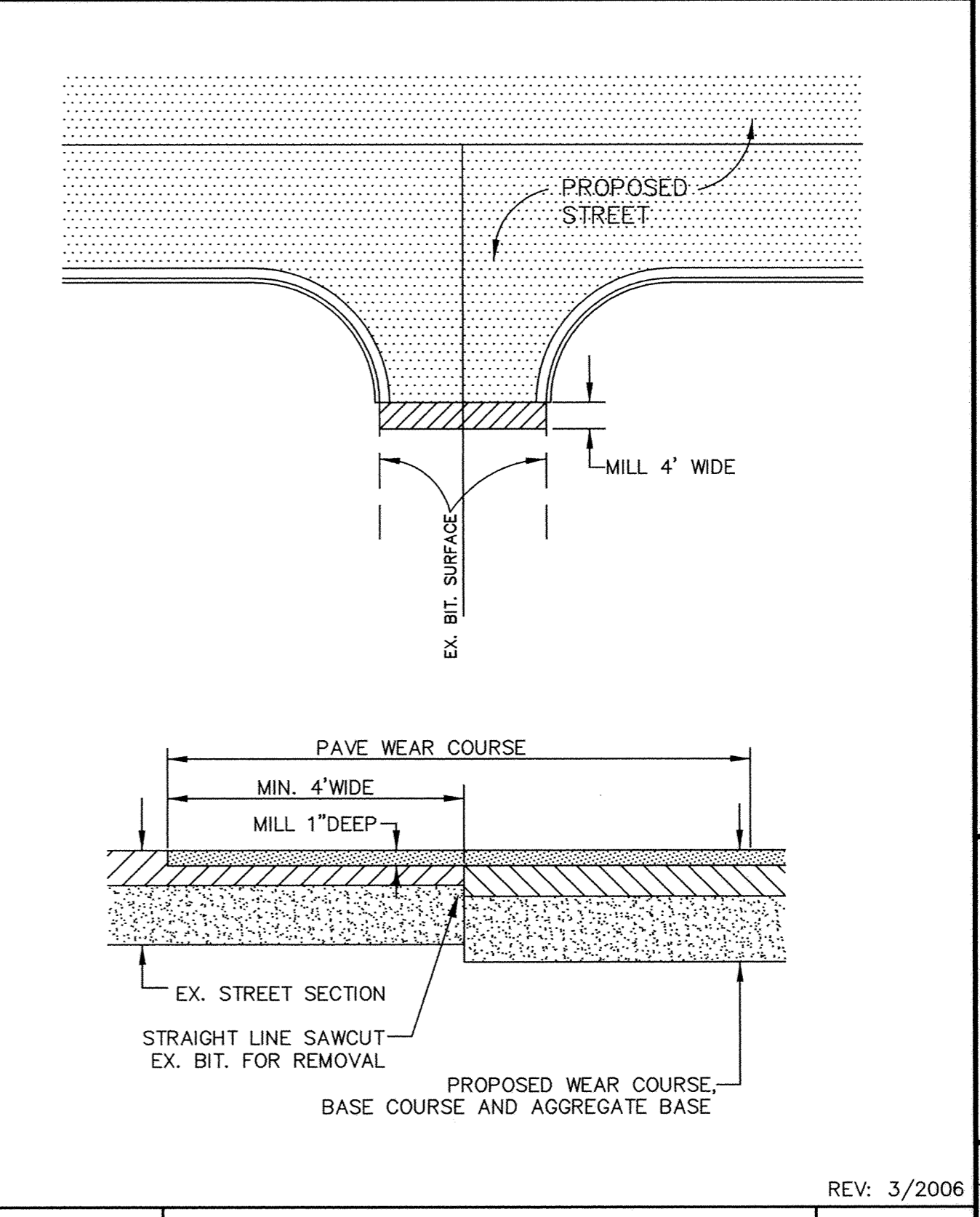
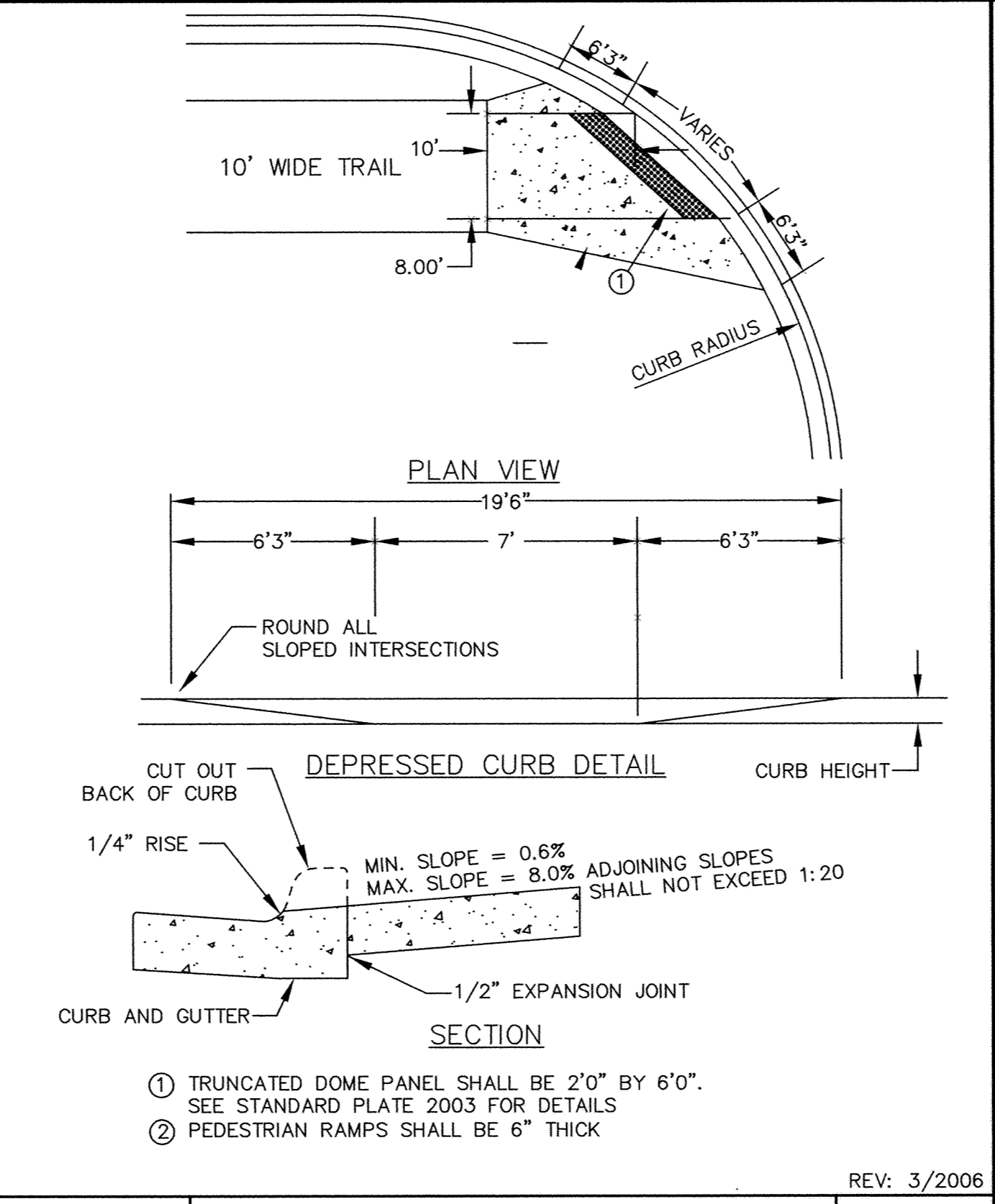
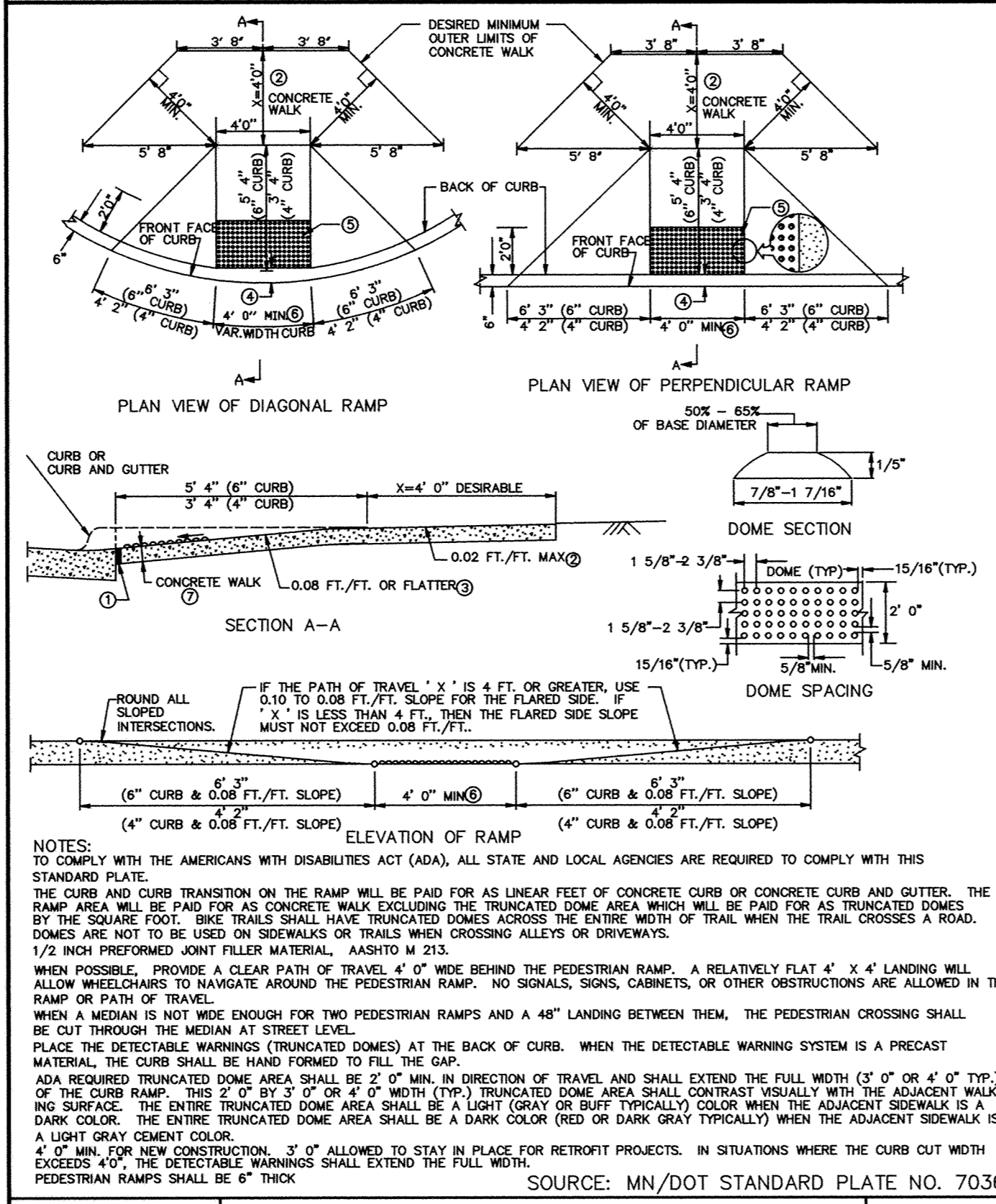
NAME: \_\_\_\_\_ LIC. NO.: 15316  
DATE: 05-02-06



**SURMOUNTABLE AND B618 CONCRETE CURB AND GUTTER**  
STANDARD PLATE NO. 2000  
REV: 3/2006

**CONCRETE "V" GUTTER**  
STANDARD PLATE NO. 2001  
REV: 3/2006

**DEPRESSED CURB WITH DRIVEWAY APRON**  
STANDARD PLATE NO. 2002  
REV: 3/2006



**PEDESTRIAN CURB RAMPS FOR SIDEWALKS**  
STANDARD PLATE NO. 2003  
SOURCE: MN/DOT STANDARD PLATE NO. 7036F

**PEDESTRIAN CURB RAMPS FOR TRAILS**  
STANDARD PLATE NO. 2004  
REV: 3/2006

**MATCH EXISTING BITUMINOUS SURFACING**  
STANDARD PLATE NO. 2006  
REV: 3/2006

**BDM CONSULTING ENGINEERS, PLC**  
Engineers and Surveyors  
4175 Lovell Road, Suite 112  
Lexington, MN 55014  
Phone: (763) 786-4570  
Fax: (763) 786-4574  
bdmce.com

DRAWN BY: NAB  
CHECKED BY: KJT  
DESIGNED BY: KJT  
JOB NO. 226068D

SHEET 6 SHEETS 55

**City of Elk River**

**City of Elk River**

**City of Elk River**