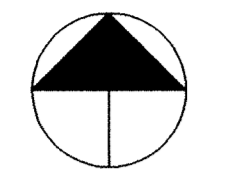


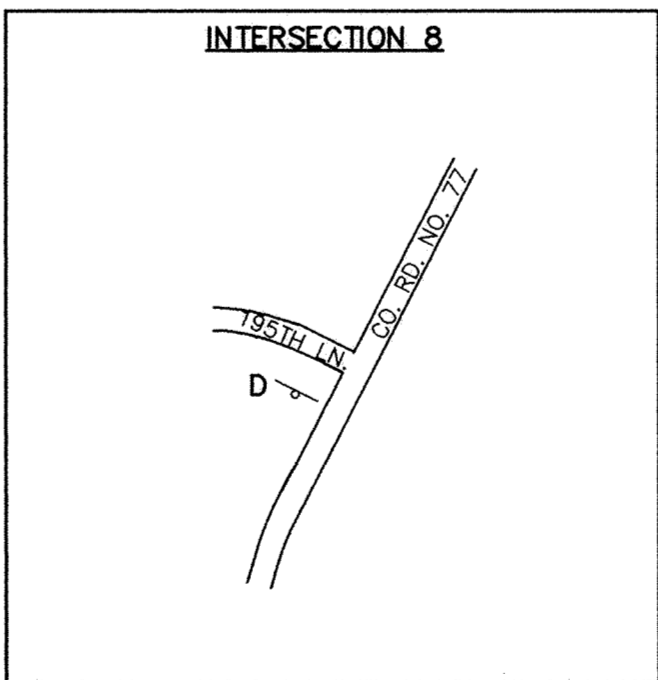
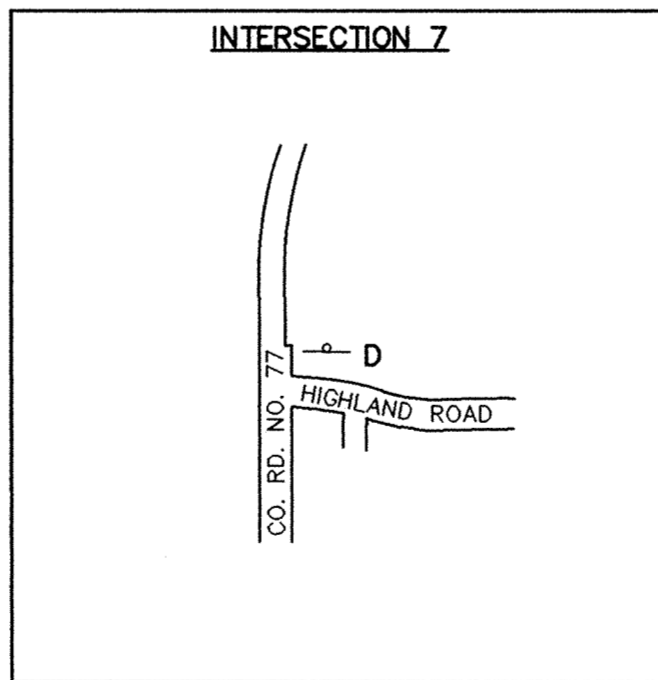
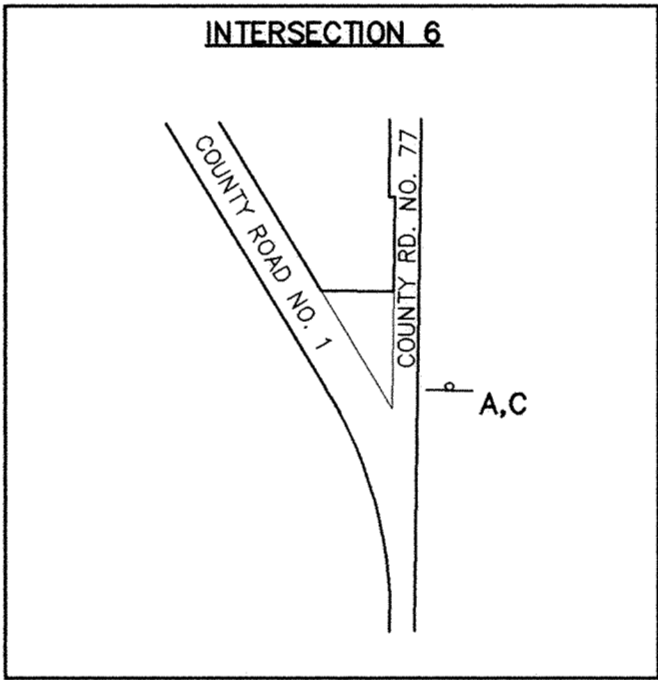
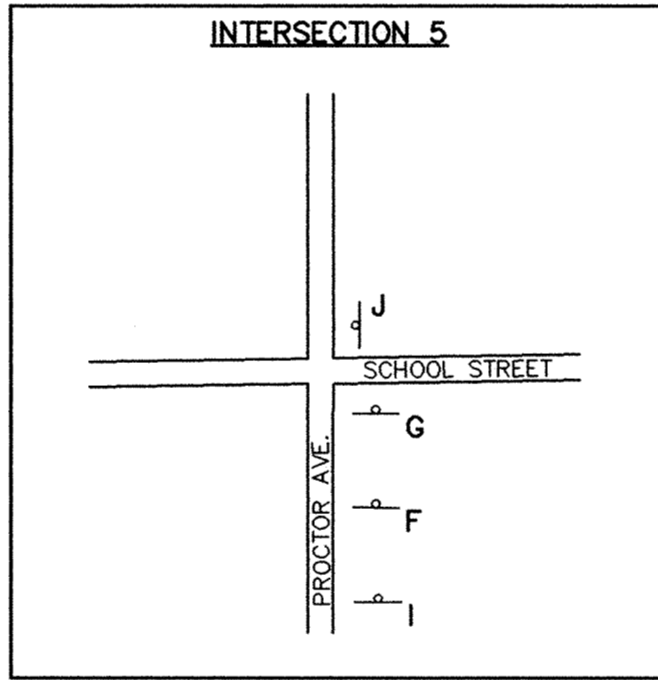
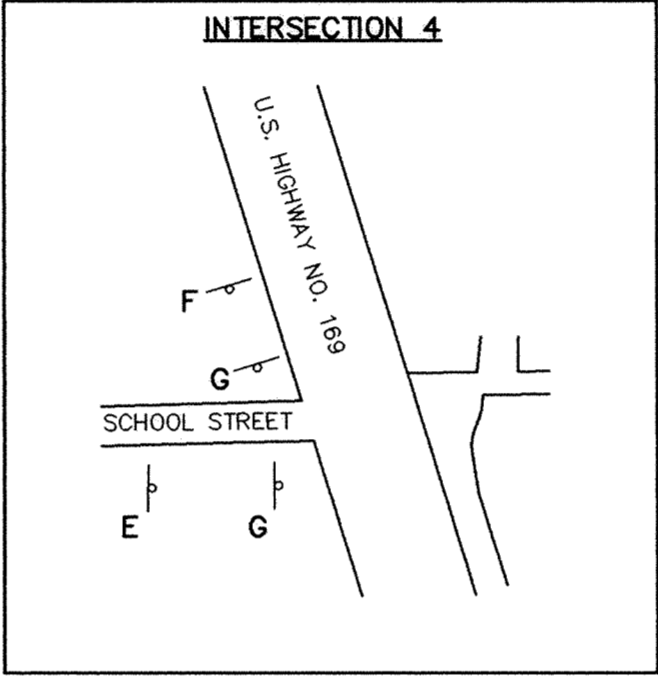
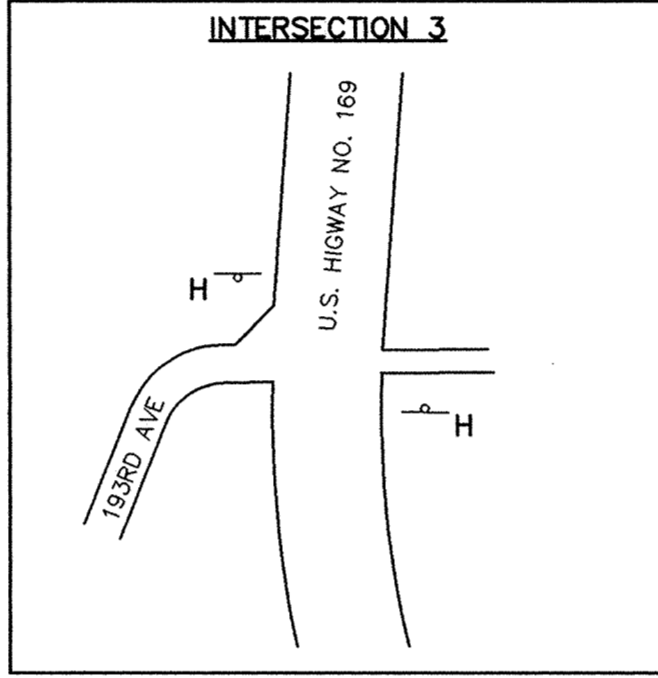
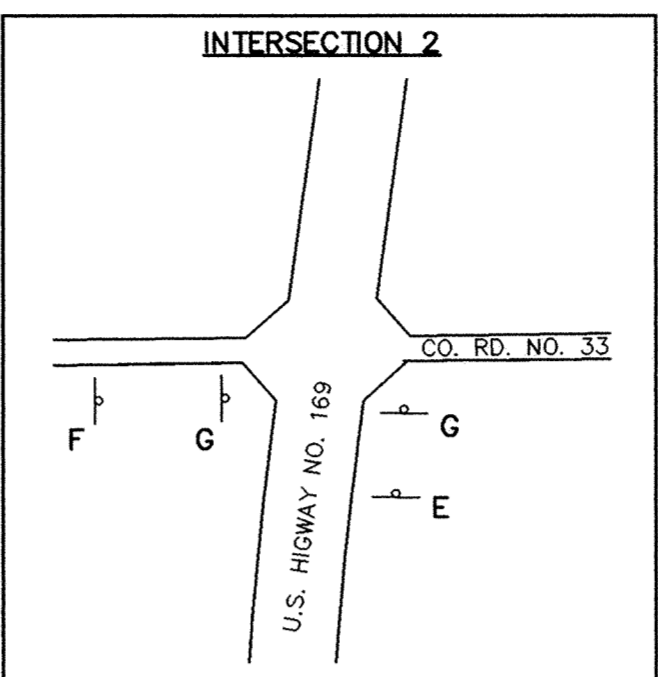
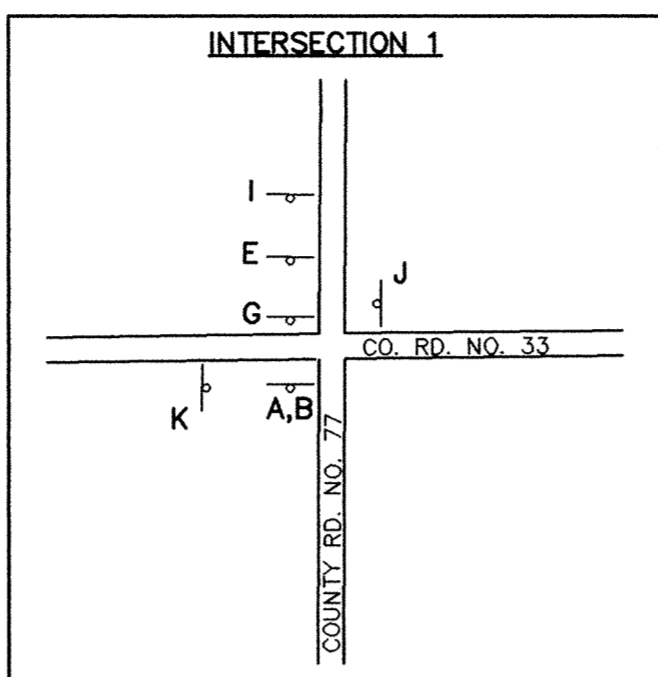
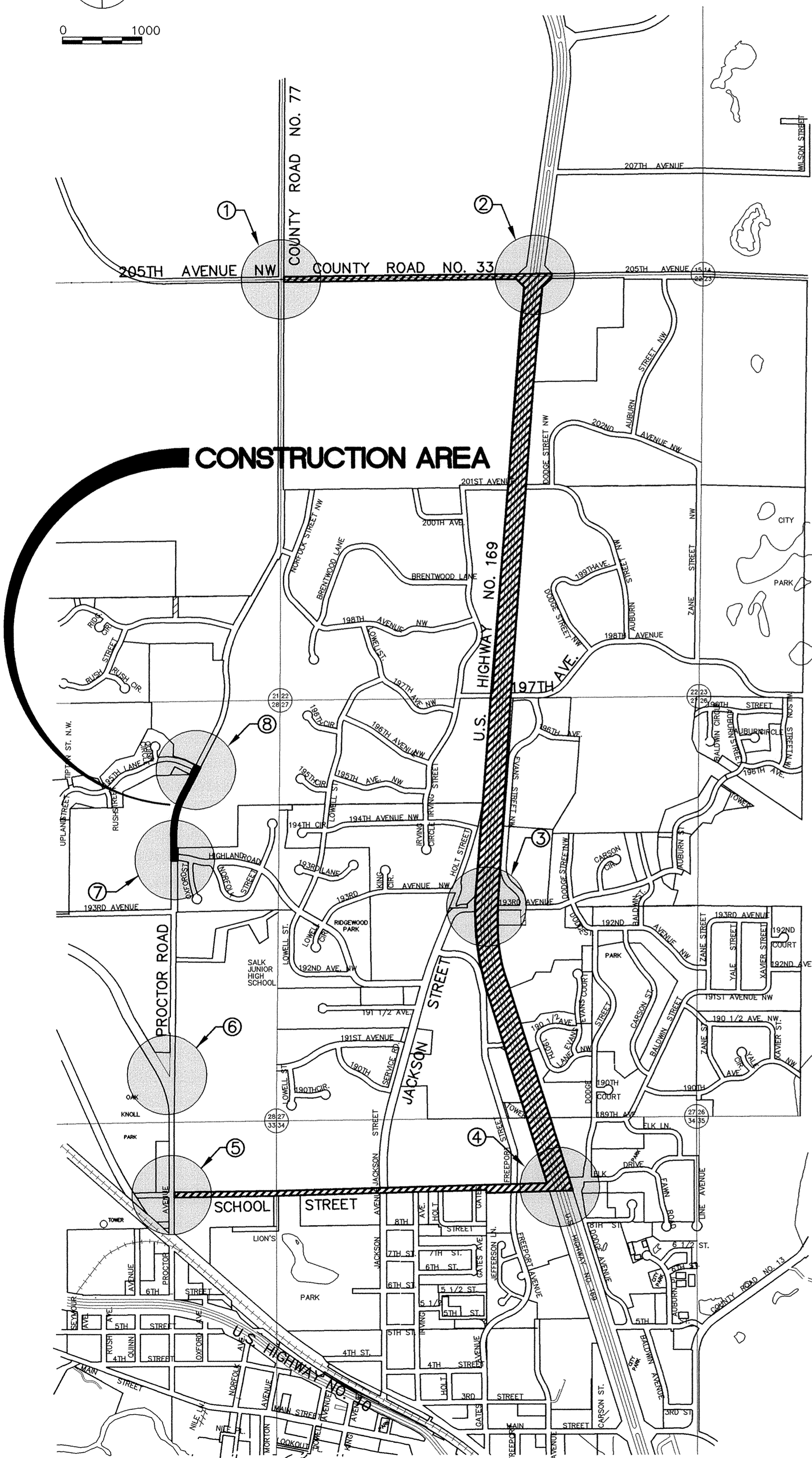
SAFCO PRODUCTS • NEW HOPKIN, MINNESOTA
REGISTERED BY PLAN NUMBER 6552
SAFCO PRODUCTS • NEW HOPKIN, MINNESOTA
REGISTERED BY PLAN NUMBER 6552
SAFCO PRODUCTS • NEW HOPKIN, MINNESOTA
REGISTERED BY PLAN NUMBER 6552
SAFCO PRODUCTS • NEW HOPKIN, MINNESOTA
REGISTERED BY PLAN NUMBER 6552

LEGEND:

CO. ROAD NO. 77 DETOUR ROUTE



0 1000



SYMBOL	NUMBER	DESCRIPTION	SIZE	QUANTITY
A	SPECIAL	COUNTY ROAD 77 WILL BE CLOSED FROM _____ TO _____	84" X 60"	2
B	SPECIAL	ROAD CLOSED 1.2 MILES AHEAD LOCAL TRAFFIC ONLY	84" X 60"	1
C	SPECIAL	ROAD CLOSED 0.5 MILES AHEAD LOCAL TRAFFIC ONLY	84" X 60"	1
D	R11-4	ROAD CLOSED TO THRU TRAFFIC	60" X 30"	2
E	M4-B M1-X4A M5-1L	DETOUR COUNTY ROAD 77	24" X 12" 24" X 24" 21" X 15"	3
F	M4-B M1-X4A M5-1R	DETOUR COUNTY ROAD 77	24" X 12" 24" X 24" 21" X 15"	3
G	M4-B M1-XFA M6-1	DETOUR COUNTY ROAD 77	24" X 12" 24" X 24" 21" X 15"	6
H	M4-B M1-X4A M6-3	DETOUR COUNTY ROAD 77	24" X 12" 24" X 24" 21" X 15"	2
I	W20-2	DETOUR AHEAD	48" X 48"	2
J	M4-8A	END DETOUR	24" X 18"	2
K	M4-B M1-X4A M6-1	DETOUR COUNTY ROAD 77	24" X 12" 24" X 24" 21" X 15"	1

NOTES:

1. LOCATION AND QUANTITY OF TRAFFIC CONTROL DEVICES ARE APPROXIMATE AND SHOWN ONLY IN A GENERAL SENSE DUE TO THE SCALE OF THE MAP AND SPACE AVAILABLE TO SHOW PLACEMENT. ACTUAL LOCATIONS AND QUANTITY OF SIGNS SHALL BE APPROVED BY THE ENGINEER IN THE FIELD.
2. ALL TRAFFIC CONTROL DEVICES SHALL CONFORM TO "THE MINNESOTA MANUAL ON UNIFORM TRAFFIC CONTROL DEVICES" INCLUDING TEMPORARY TRAFFIC CONTROL ZONE LAYOUTS FIELD MANUAL, APRIL 1995.
3. THE CONTRACTOR SHALL PROVIDE CONTINUOUS ACCESS TO ALL ADJACENT RESIDENCES AND EMERGENCY VEHICLES
4. SIGN "A" SHALL BE INSTALLED ONE (1) WEEK PRIOR TO CLOSURE OF COUNTY ROAD NO. 77.

RECORD PLAN
MARCH 1998

I HEREBY CERTIFY THAT THIS PLAN, SPECIFICATION, OR REPORT WAS PREPARED BY ME OR UNDER MY DIRECT SUPERVISION AND THAT I AM A DULY REGISTERED PROFESSIONAL ENGINEER UNDER THE LAWS OF THE STATE OF MINNESOTA.

Luigi Mauri
DATE 4/1/97 REG. NO. 1536



1326 ENERGY PARK DRIVE
ST. PAUL, MINNESOTA 55108
(612) 644-4389

DATE	DESCRIPTION	DESIGNED	AJB
		CHECKED	
		DRAWN	RKM
		GRAPHIC SCALE	
		0 1000	
		0 VERT. NA	

ELK RIVER MUNICIPAL UTILITIES HIGHLAND ROAD TRUNK WATERMAIN DETOUR PLAN	
DATE APR. 1997	SHEET 14 OF 16 SHEETS
PROJECT NO. 235-013	