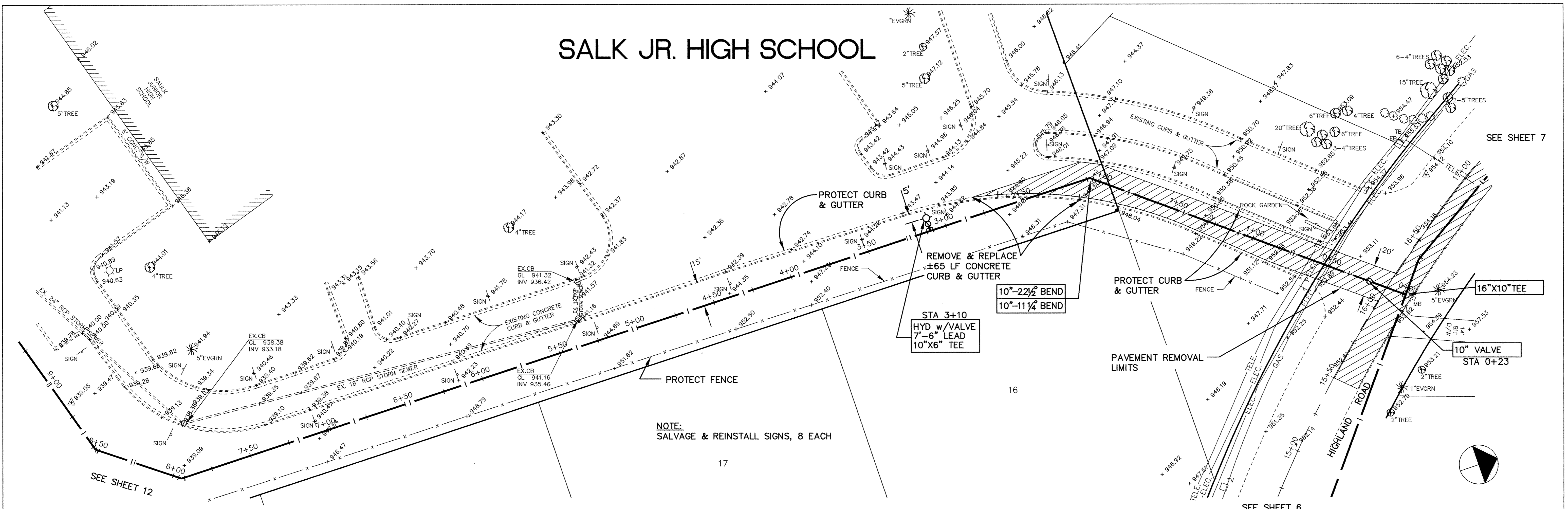
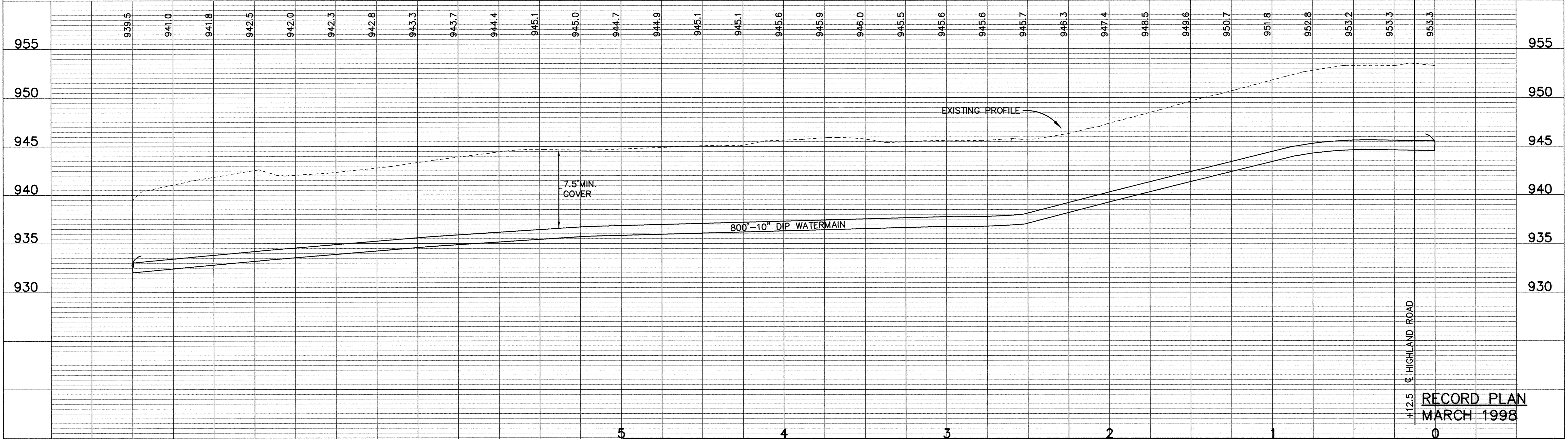


SALK JR. HIGH SCHOOL



NOTE:
SALVAGE & REINSTALL SIGNS, 8 EACH



RECORD PLAN
MARCH 1998

I HEREBY CERTIFY THAT THIS PLAN, SPECIFICATION, OR REPORT WAS PREPARED BY ME OR UNDER MY DIRECT SUPERVISION AND THAT I AM A DULY REGISTERED PROFESSIONAL ENGINEER UNDER THE LAWS OF THE STATE OF MINNESOTA.
Larry Mann
DATE 4/16/97 REG. NO. 15316



1326 ENERGY PARK DRIVE
ST. PAUL, MINNESOTA 55108
(612) 644-4389

DATE	DESCRIPTION	DESIGNED AJR
		CHECKED
		DRAWN RKM
		GRAPHIC SCALE
		0 30
		VERT. 5

ELK RIVER MUNICIPAL UTILITIES HIGHLAND ROAD TRUNK WATERMAIN SALK JR. HIGH SCHOOL		0+00 TO 8+00
DATE APR. 1997	SHEET 11 OF 16 SHEETS	PROJECT NO. 235-013

1289

DRAWING NUMBER
 HIGHL. 97
 11
 S&CO PRODUCTS • NEW HARBOR, MINNESOTA
 REPRODUCED BY PLAN NUMBER 6552