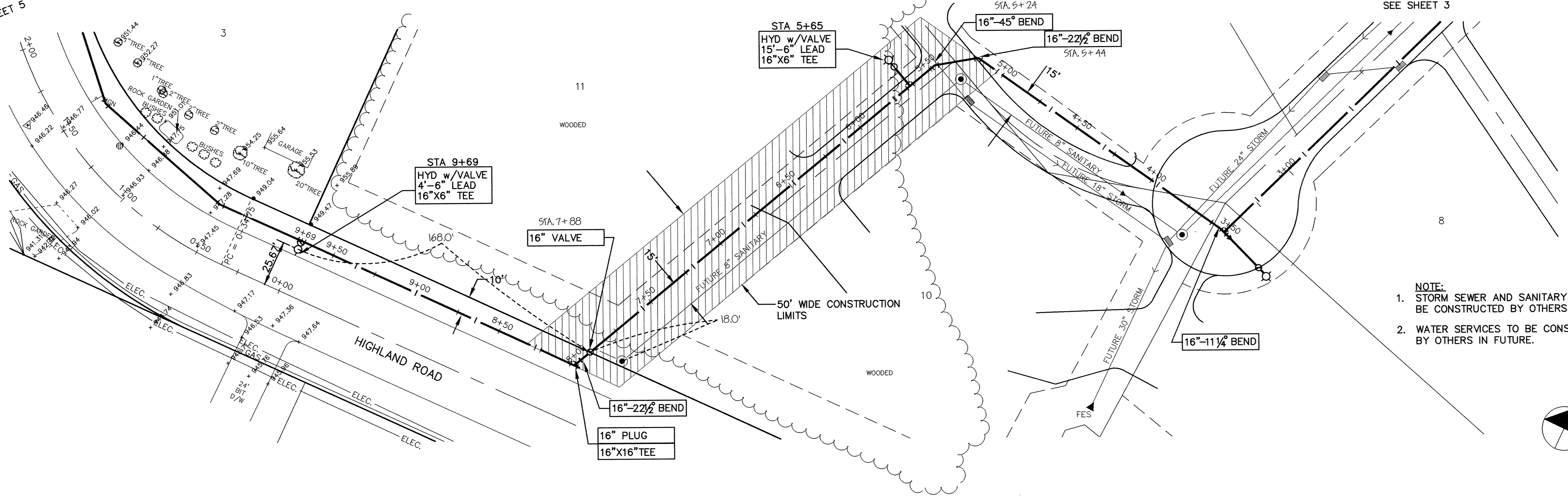


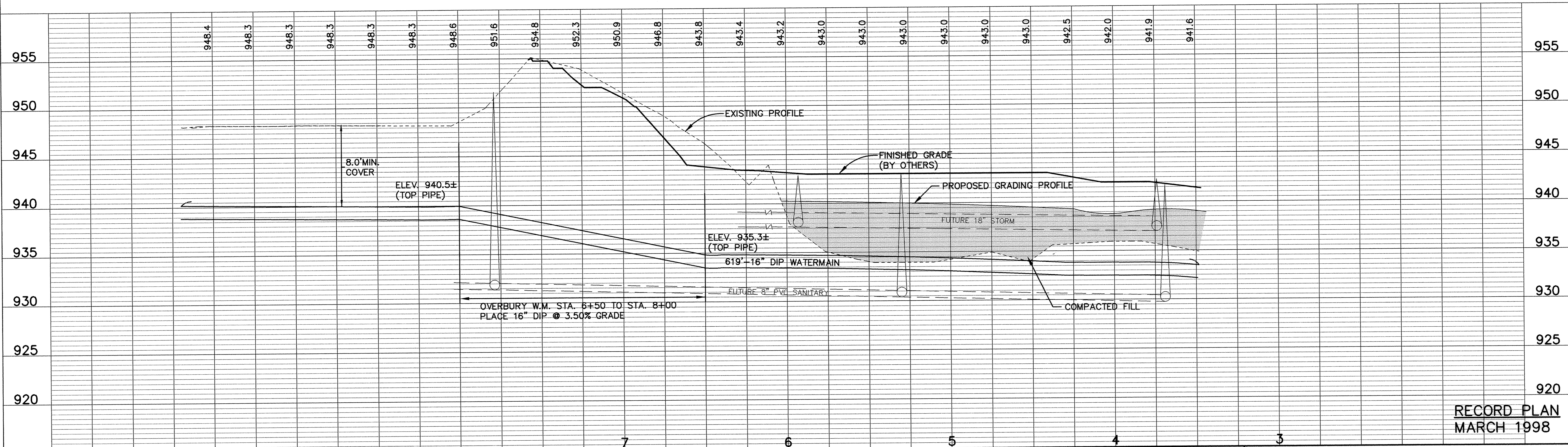
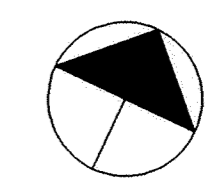
# COTTAGES OF ELK RIVER

SEE SHEET 5

SEE SHEET 3



- NOTE:**
- STORM SEWER AND SANITARY SEWER TO BE CONSTRUCTED BY OTHERS IN FUTURE.
  - WATER SERVICES TO BE CONSTRUCTED BY OTHERS IN FUTURE.



**RECORD PLAN**  
MARCH 1998

I HEREBY CERTIFY THAT THIS PLAN, SPECIFICATION, OR REPORT WAS PREPARED BY ME OR UNDER MY DIRECT SUPERVISION AND THAT I AM A DULY REGISTERED PROFESSIONAL ENGINEER UNDER THE LAWS OF THE STATE OF MINNESOTA.  
*John J. Mauer*  
DATE 4/9/97 REG. NO. 15316



1326 ENERGY PARK DRIVE  
ST. PAUL, MINNESOTA 55108  
(612) 644-4389

| DATE | DESCRIPTION | DESIGNED | CHECKED |
|------|-------------|----------|---------|
|      |             | AJR      |         |
|      |             |          | RKM     |

GRAPHIC SCALE  
0 30  
0 VERT. 5

ELK RIVER MUNICIPAL UTILITIES  
HIGHLAND ROAD TRUNK WATERMAIN  
COTTAGES OF ELK RIVER  
3+48.41 TO 9+69.23  
DATE APR. 1997 SHEET 4 OF 16 SHEETS PROJECT NO. 235-013