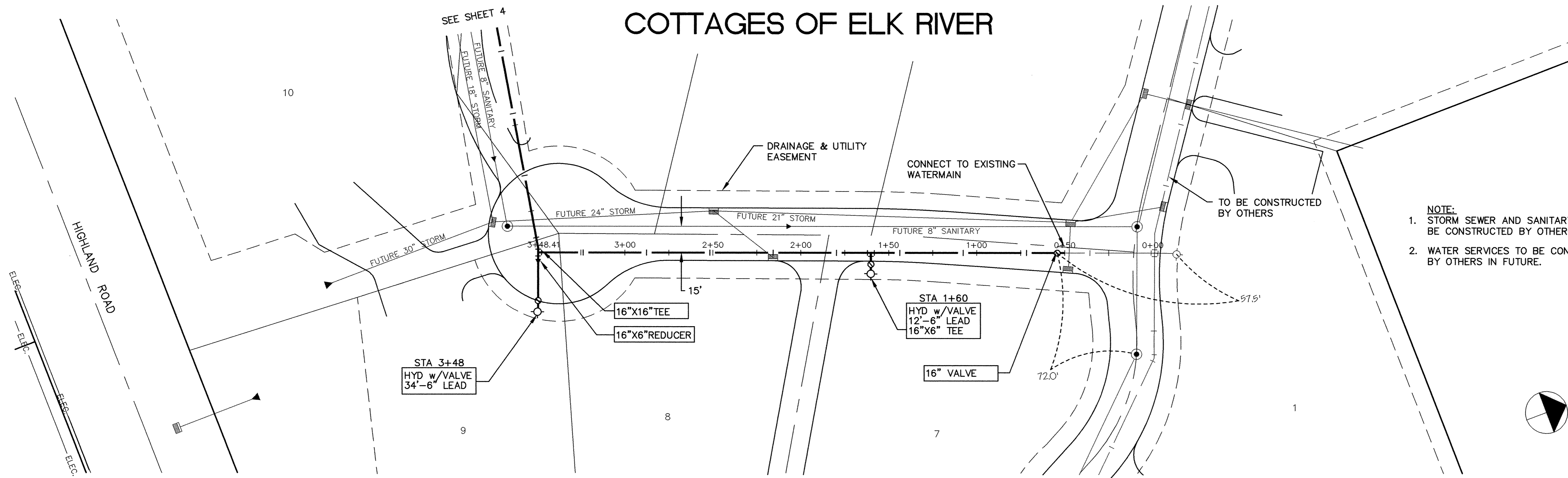
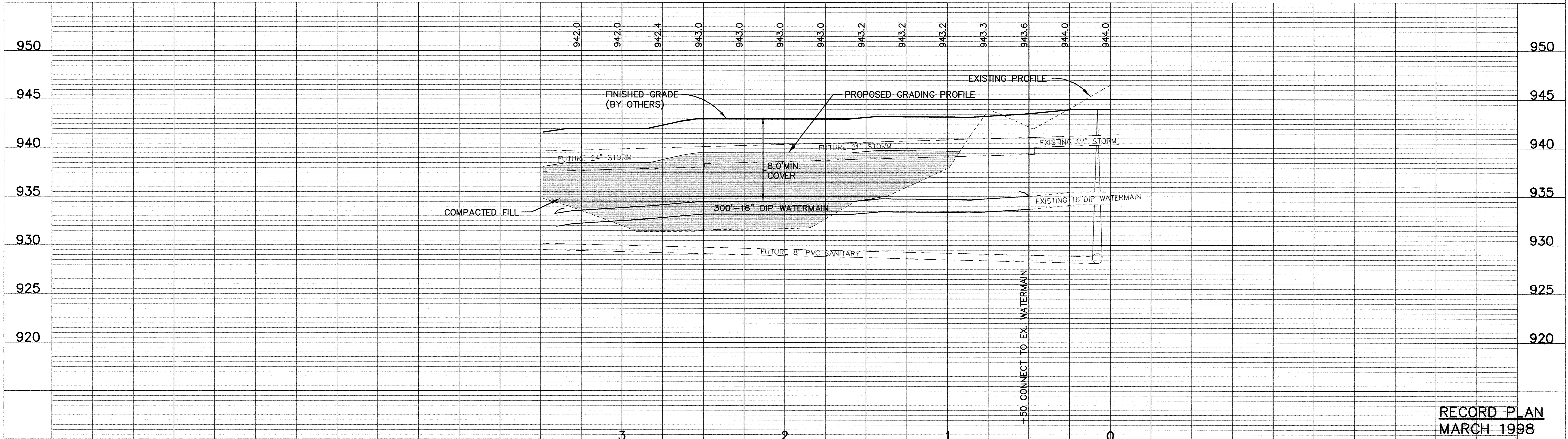
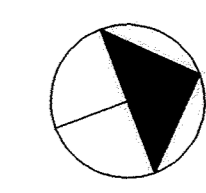


# COTTAGES OF ELK RIVER



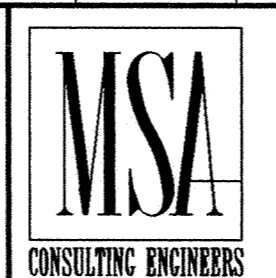
- NOTE:**
1. STORM SEWER AND SANITARY SEWER TO BE CONSTRUCTED BY OTHERS IN FUTURE.
  2. WATER SERVICES TO BE CONSTRUCTED BY OTHERS IN FUTURE.



**RECORD PLAN**  
MARCH 1998

I HEREBY CERTIFY THAT THIS PLAN, SPECIFICATION, OR REPORT WAS PREPARED BY ME OR UNDER MY DIRECT SUPERVISION AND THAT I AM A DULY REGISTERED PROFESSIONAL ENGINEER UNDER THE LAWS OF THE STATE OF MINNESOTA.

*Edward M. Maurer*  
DATE 4/9/97 REG. NO. 15316



1326 ENERGY PARK DRIVE  
ST. PAUL, MINNESOTA 55108  
(612) 644-4389

REVISIONS	DATE	DESCRIPTION

DESIGNED RKM  
CHECKED    
DRAWN AJB

GRAPHIC SCALE  
0 30  
0 5  
VERT. 5

ELK RIVER MUNICIPAL UTILITIES  
HIGHLAND ROAD TRUNK WATERMAIN  
COTTAGES OF ELK RIVER

0+00 TO 3+48.41

DATE APR. 1997 SHEET 3 OF 16 SHEETS PROJECT NO. 235-013