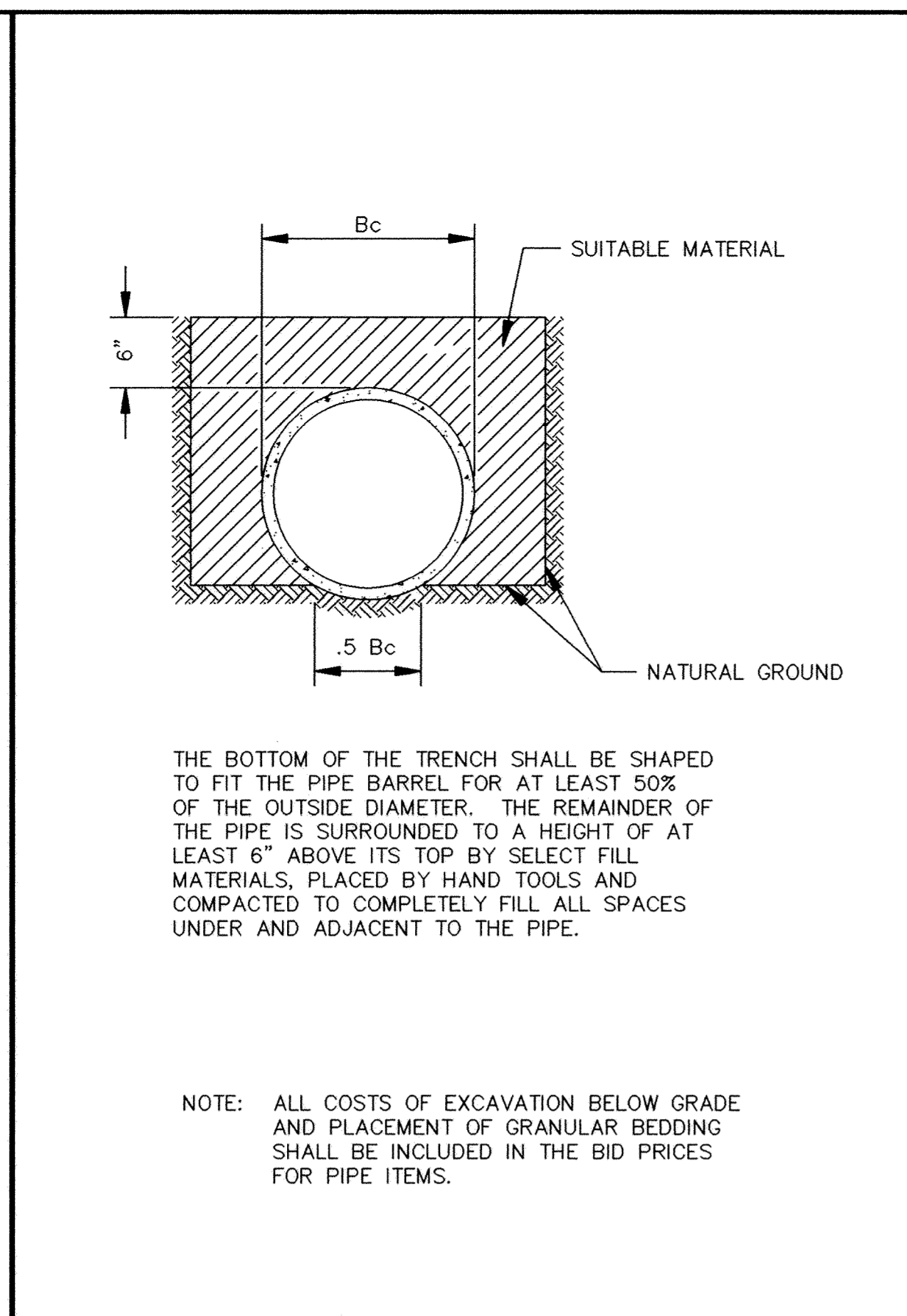
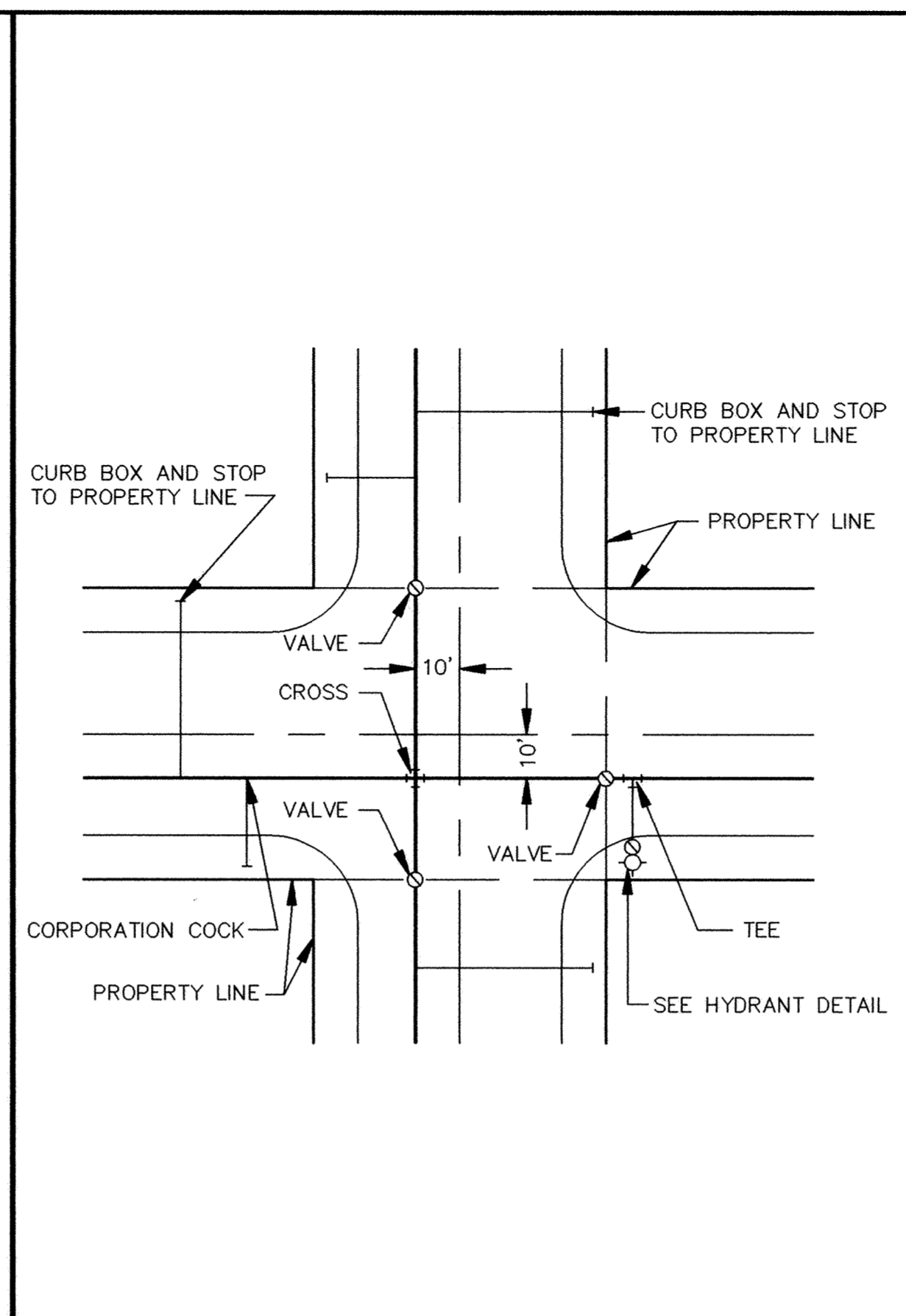


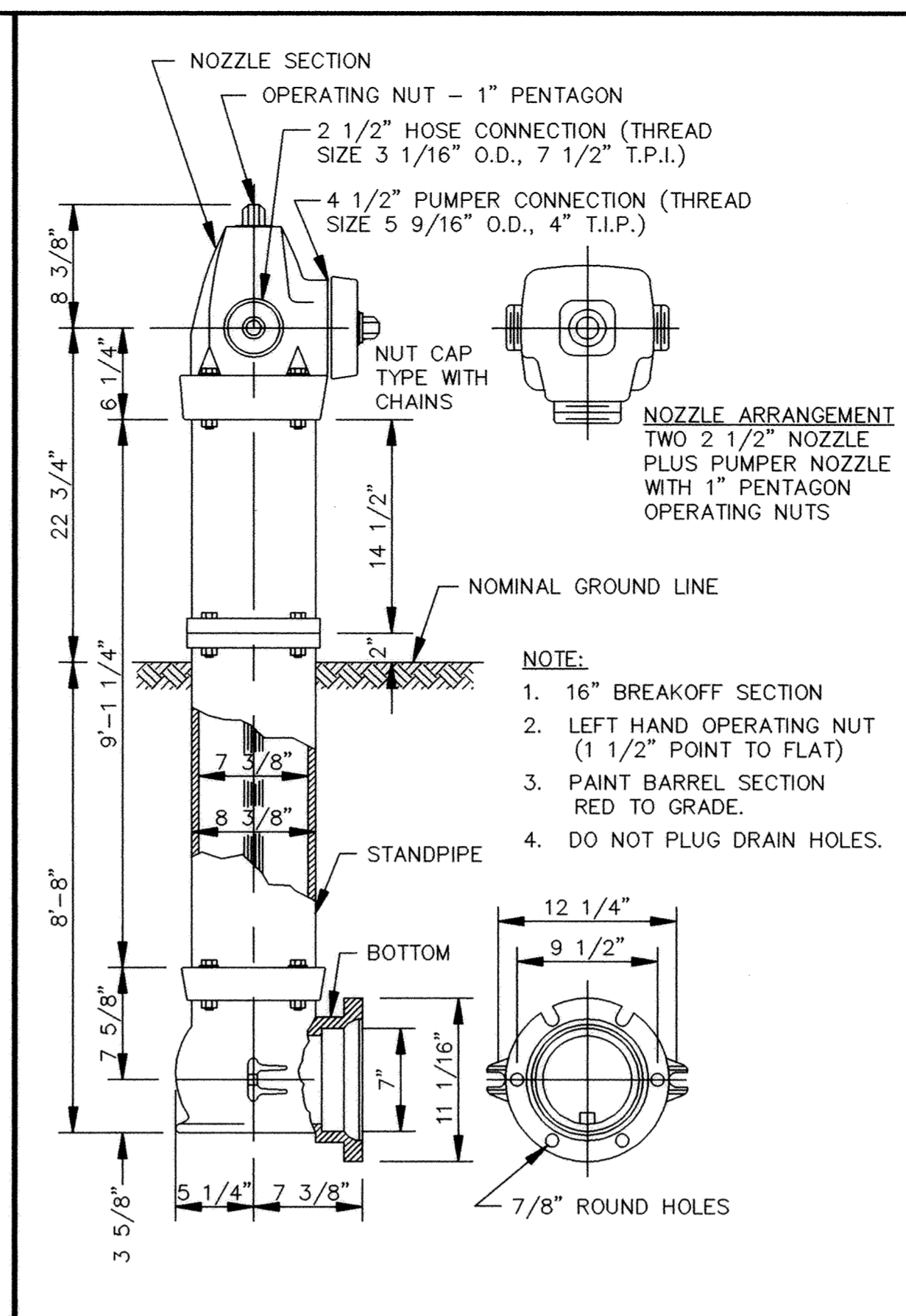
CLASS B PIPE BEDDING



CLASS C PIPE BEDDING



TYPICAL WATER LAYOUT

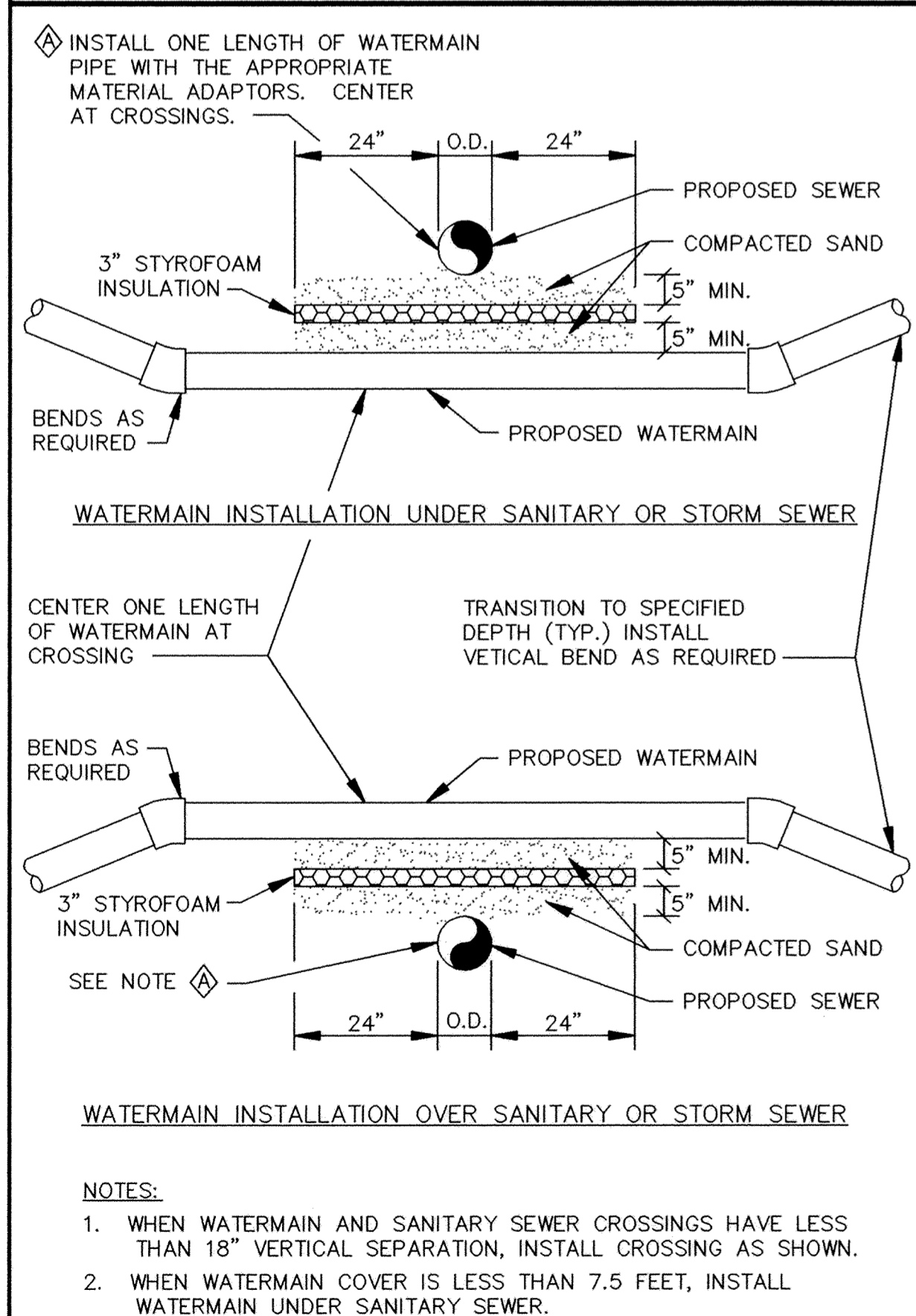


PACER HYDRANT DETAIL

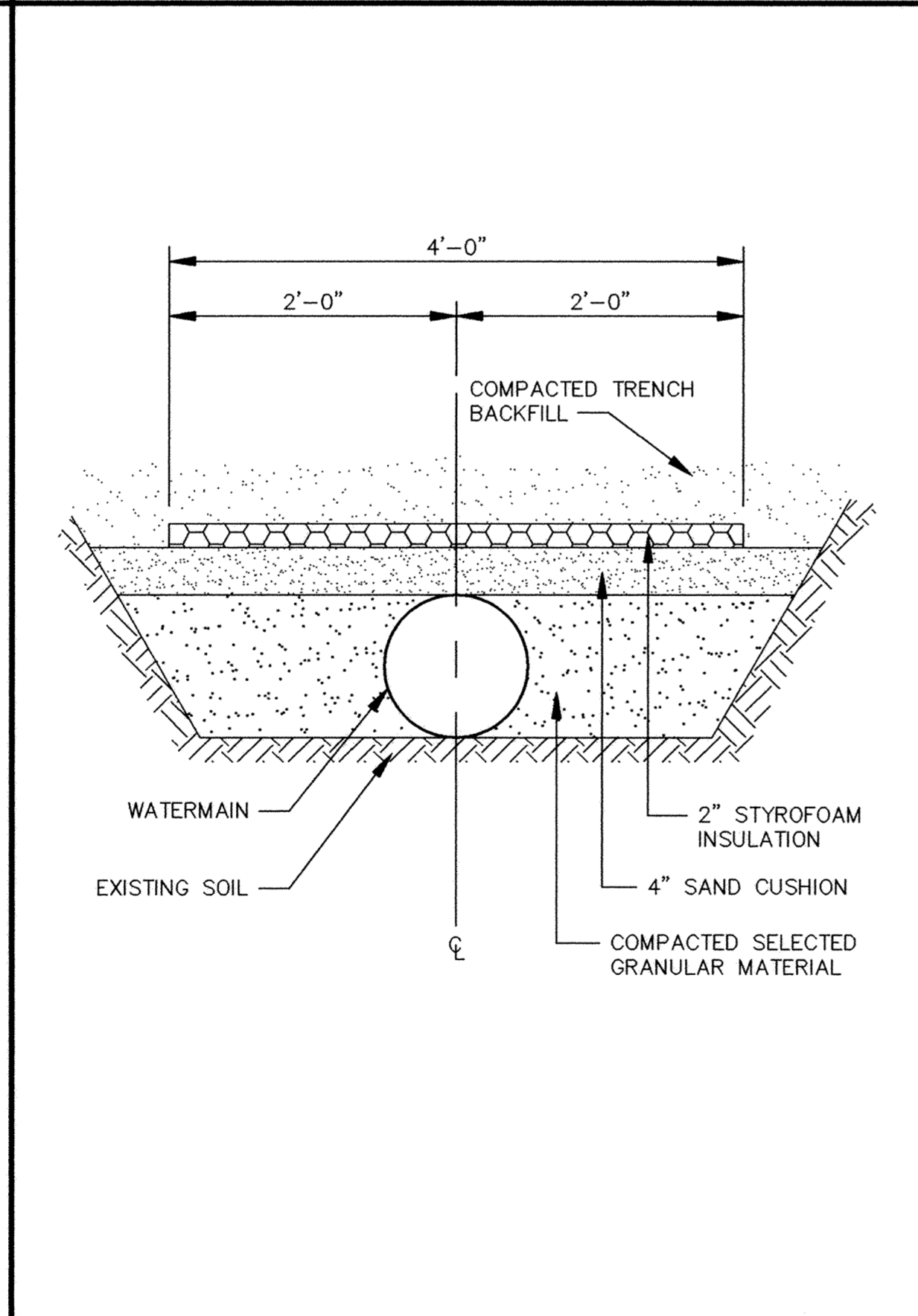
NOMINAL FITTING SIZE (INCHES)	TEE, WYE, PLUG OR CAP	90° BEND, PLUGGED CROSS	TEE PLUGGED ON RUN		45° BEND	22 1/2° BEND	11 1/4° BEND
			A ¹	A ²			
4	1.0	1.4	1.9	1.4	1.0	---	---
6	2.1	3.0	4.3	3.0	1.6	1.0	---
8	3.8	5.3	7.6	5.4	2.9	1.5	1.0
10	5.9	8.4	11.8	8.4	4.6	2.6	1.2
12	8.5	12.0	17.0	12.0	6.6	3.4	1.7
14	11.5	16.3	23.0	16.3	8.9	4.6	2.3
16	15.0	21.3	30.0	21.3	11.6	6.0	3.0
18	19.0	27.0	38.0	27.0	14.6	7.6	3.8
20	23.5	33.3	47.0	33.3	18.1	9.4	4.7
24	34.0	48.0	68.0	48.0	26.2	13.6	6.8

NOTE:
 1. CONCRETE THRUST BLOCKING TO BE POURED AGAINST UNDISTURBED EARTH.
 2. KEEP CONCRETE CLEAR OF JOINT AND ACCESSORIES.
 3. IF NOT SHOWN ON PLANS, REQUIRED BEARING AREAS AT FITTING SHALL BE AS INDICATED ABOVE, ADJUSTED IF NECESSARY, TO CONFORM TO THE TEST PRESSURE(S) AND ALLOWABLE SOIL BEARING STRESS(ES).
 4. BEARING AREAS AND SPECIAL BLOCKING DETAILS SHOWN ON PLANS TAKE PRECEDENCE OVER BEARING AREAS AND BLOCKING DETAILS SHOWN IN THIS STANDARD DETAIL.
 5. ABOVE BEARING AREAS BASED ON TEST PRESSURE OF 150 P.S.I. AND AN ALLOWABLE SOIL BEARING STRESS OF 2000 POUNDS PER SQUARE FOOT. TO COMPUTE BEARING AREAS FOR DIFFERENT TEST PRESSURES AND SOIL BEARING STRESSES, USE THE FOLLOWING EQUATION: BEARING AREA = (TEST PRESSURE/150) X (2000/SOIL BEARING STRESS) X (TABLE VALUE).

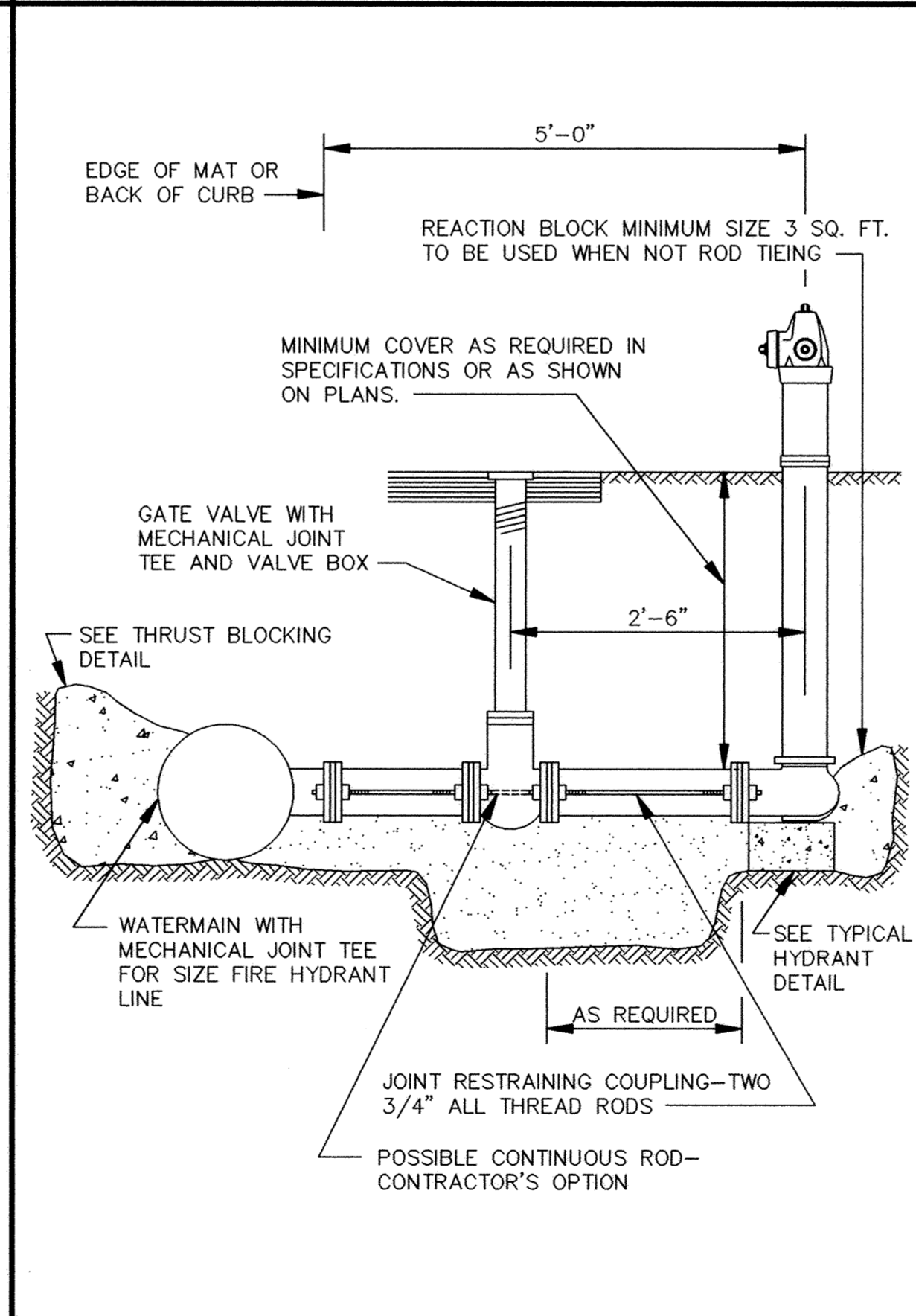
THRUST BLOCKING DETAIL



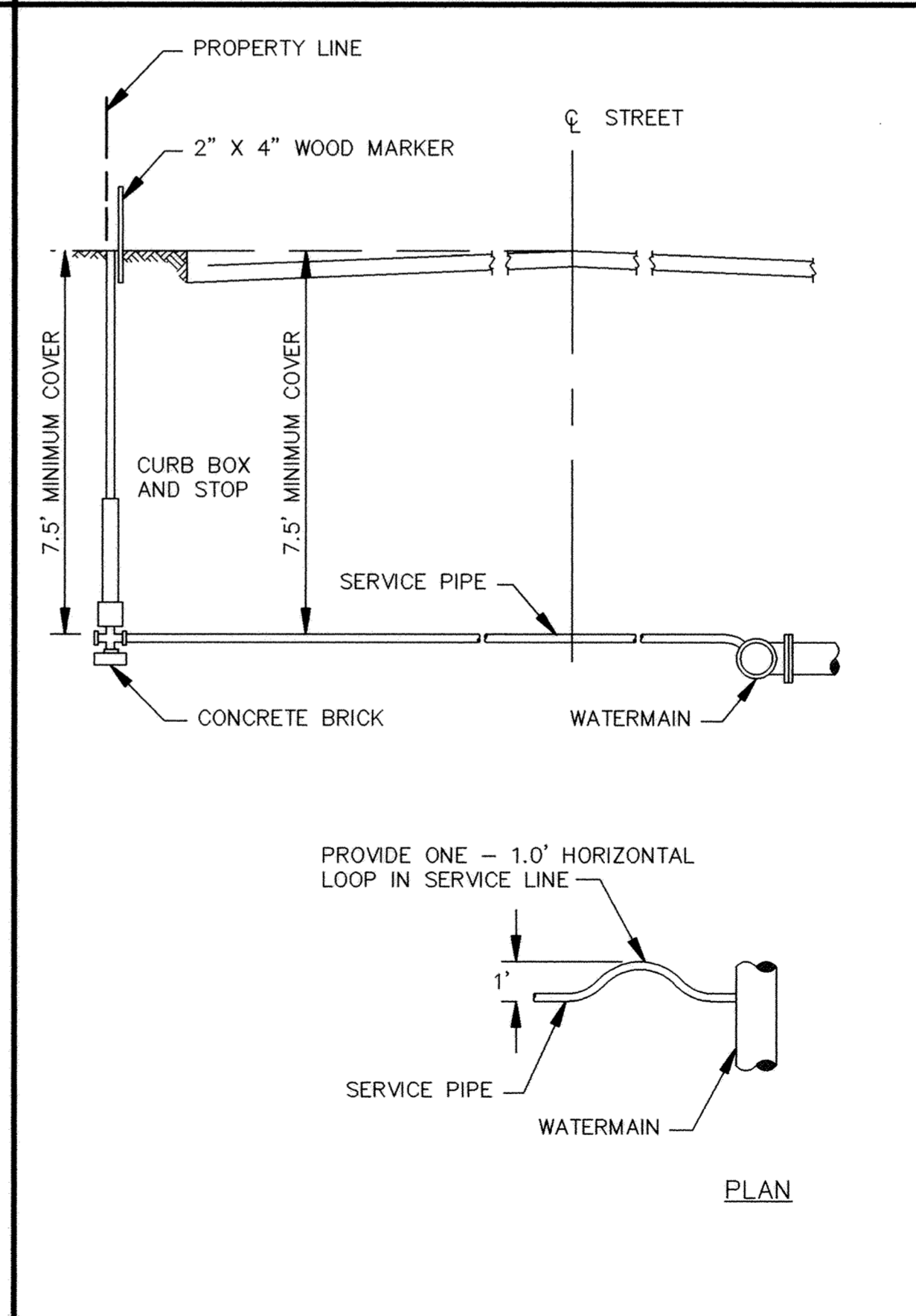
WATERMAIN CROSSING



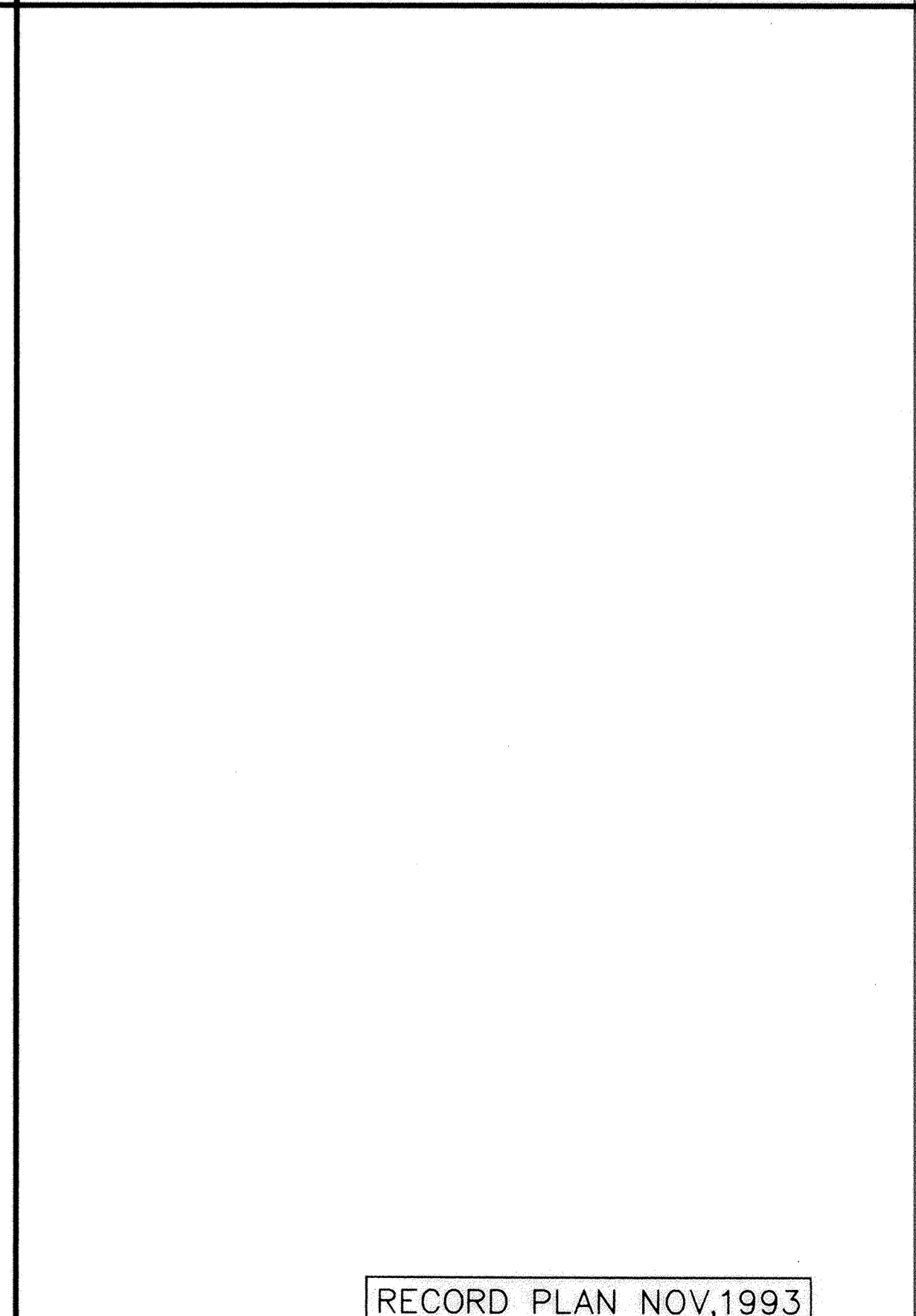
PIPE INSULATION DETAIL



RODDING DETAIL



TYPICAL SERVICE DETAIL



RECORD PLAN NOV,1993

I HEREBY CERTIFY THAT THIS PLAN, SPECIFICATION, OR REPORT WAS PREPARED BY ME OR UNDER MY DIRECT SUPERVISION AND THAT I AM A DULY REGISTERED PROFESSIONAL ENGINEER UNDER THE LAWS OF THE STATE OF MINNESOTA.

James Maier
 DATE 4/28/93 REG. NO. 15316

MSA CONSULTING ENGINEERS
 Maier Stewart & Associates Inc.

1959 SLOAN PLACE (612) 774-6021 ST. PAUL, MINNESOTA 55117
 9800 SHELARD PARKWAY (612) 546-0432 MINNEAPOLIS, MINNESOTA 55441

DATE	DESCRIPTION	DESIGNED	SUM
		CHEKED	TJM
		DRAWN	CLS
GRAPHIC SCALE			
0 HORIZ.			
0 VERT.			

CITY OF ELK RIVER
 HERITAGE LANDING
 WATERMAIN DETAILS

DATE APRIL 1993 SHEET 26 OF 28 SHEETS PROJECT NO. 230-159

DRAWING NUMBER
 HERIT 93
 DRAWING NUMBER
 26
 DRAWING NUMBER
 HERIT 93