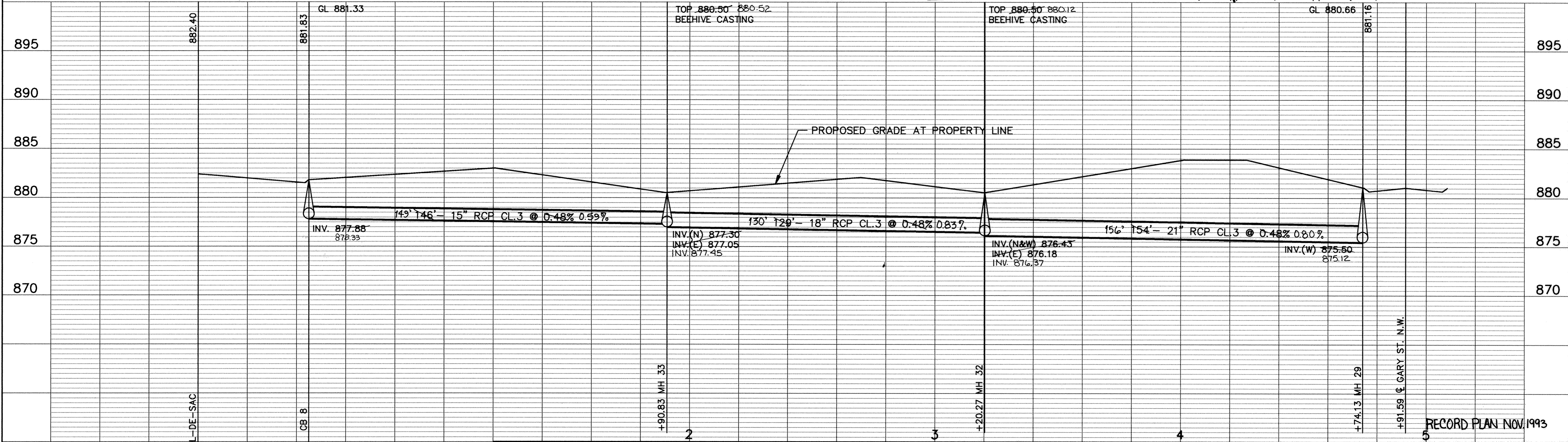
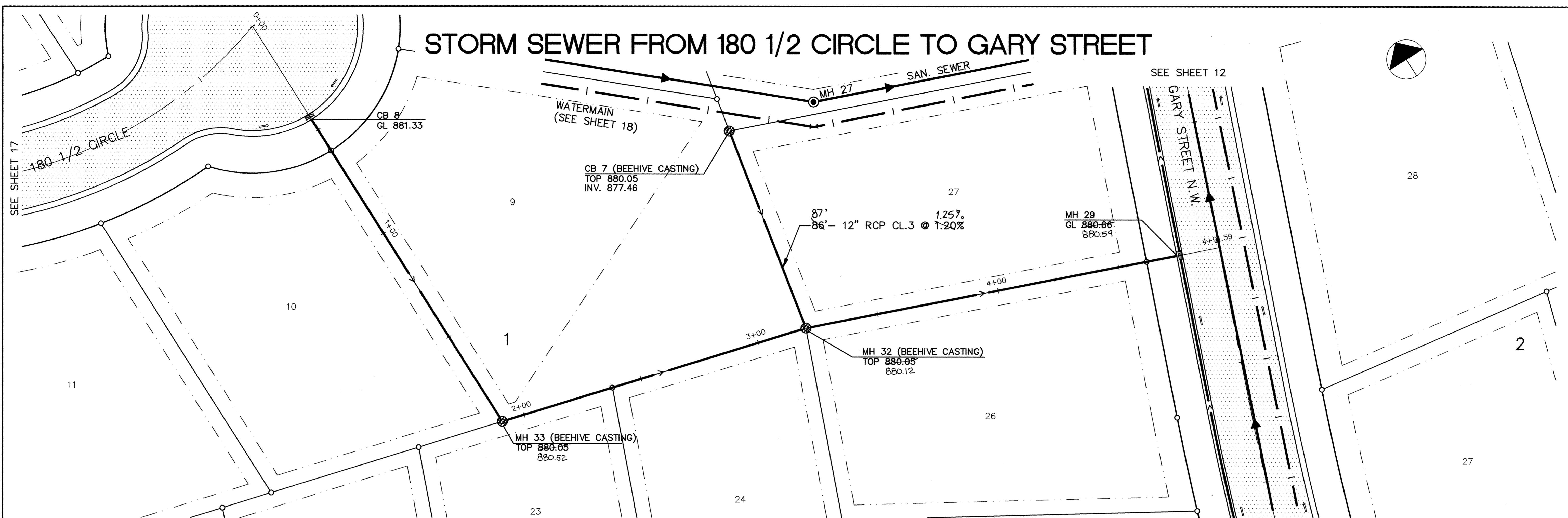


STORM SEWER FROM 180 1/2 CIRCLE TO GARY STREET



ER159-7	0	1
---------	---	---

I HEREBY CERTIFY THAT THIS PLAN, SPECIFICATION, OR REPORT WAS PREPARED BY ME OR UNDER MY DIRECT SUPERVISION AND THAT I AM A DULY REGISTERED PROFESSIONAL ENGINEER UNDER THE LAWS OF THE STATE OF MINNESOTA.

Jerry J. Maier
 DATE 4/23/93 REG. NO. 15316

MS&A CONSULTING ENGINEERS
Maier Stewart & Associates Inc.

1959 SLOAN PLACE (612) 774-6021 ST. PAUL, MINNESOTA 55117
 9800 SHELARD PARKWAY (612) 546-0432 MINNEAPOLIS, MINNESOTA 55441

REVISIONS	DATE	DESCRIPTION	DESIGNED	CHECKED	DRAWN
			GG	TJM	TB

GRAPHIC SCALE
 0' HORIZ. 20'
 0' VERT. 5'

CITY OF ELK RIVER
 STORM SEWER CONSTRUCTION
 180 1/2 CIRCLE TO GARY STREET

DATE APRIL 1993 SHEET 19 OF 28 SHEETS PROJECT NO. 230-159

DRAWING NUMBER
 HERT 93
 19
 584