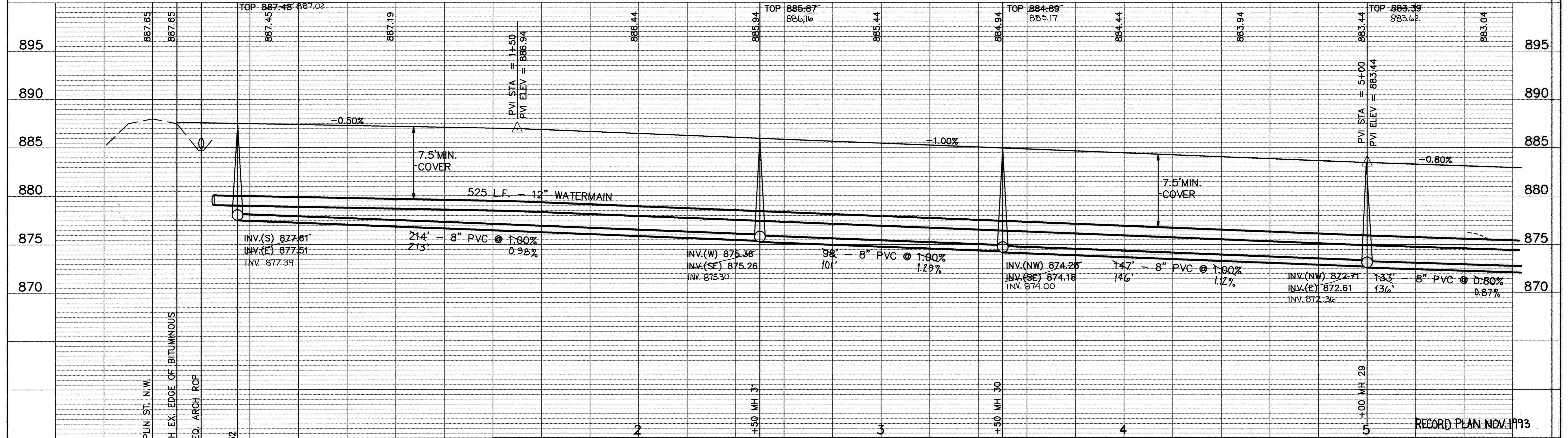
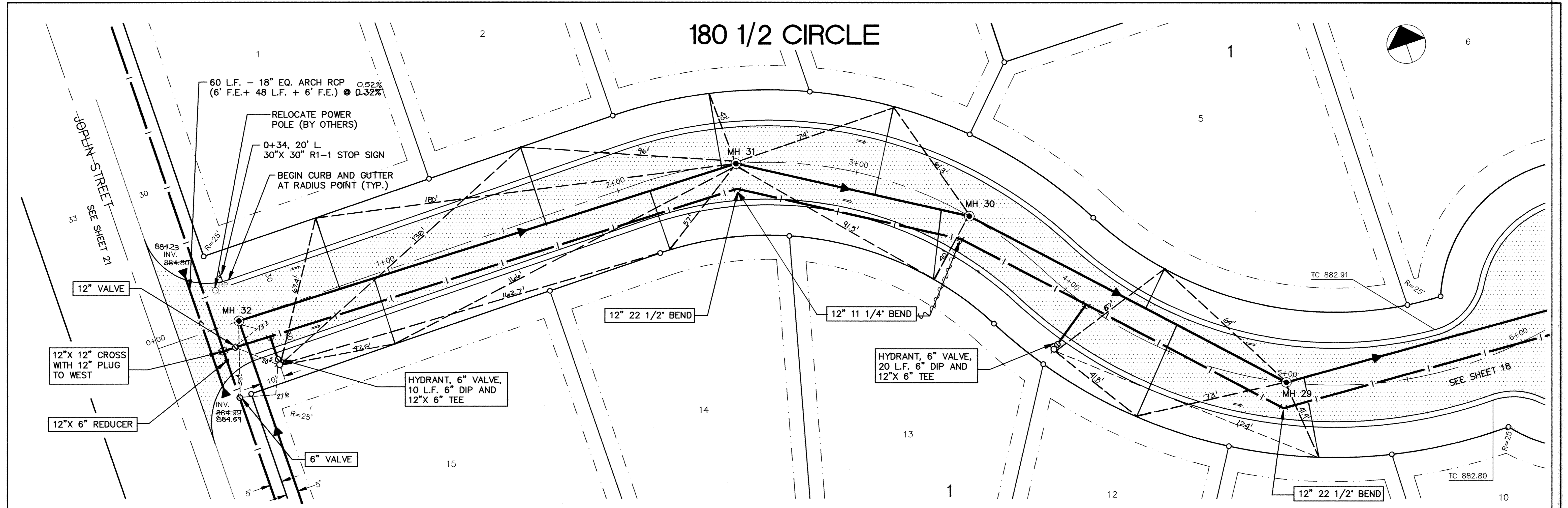


180 1/2 CIRCLE



RECORD PLAN NOV. 1993

I HEREBY CERTIFY THAT THIS PLAN, SPECIFICATION, OR REPORT WAS PREPARED BY ME OR UNDER MY DIRECT SUPERVISION AND THAT I AM A DULY REGISTERED PROFESSIONAL ENGINEER UNDER THE LAWS OF THE STATE OF MINNESOTA.

Lucy J. Maurer

DATE 4/28/93 REG. NO. 15,316

MSA CONSULTING ENGINEERS
Maier Stewart & Associates Inc.

1959 SLOAN PLACE (612) 774-6021 ST. PAUL, MINNESOTA 55117
9800 SHELARD PARKWAY (612) 546-0432 MINNEAPOLIS, MINNESOTA 55441

DATE	DESCRIPTION	DESIGNED	CHECKED	DRAWN
		GG	TJM	CLS

GRAPHIC SCALE
0 HORIZ. 20'
0 VERT. 5'

CITY OF ELK RIVER	
SANITARY SEWER, WATERMAIN, STORM SEWER & STREET	
180 1/2 CIRCLE	
DATE APRIL 1993	SHEET 17 OF 28 SHEETS
PROJECT NO. 230-159	