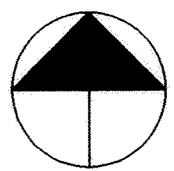
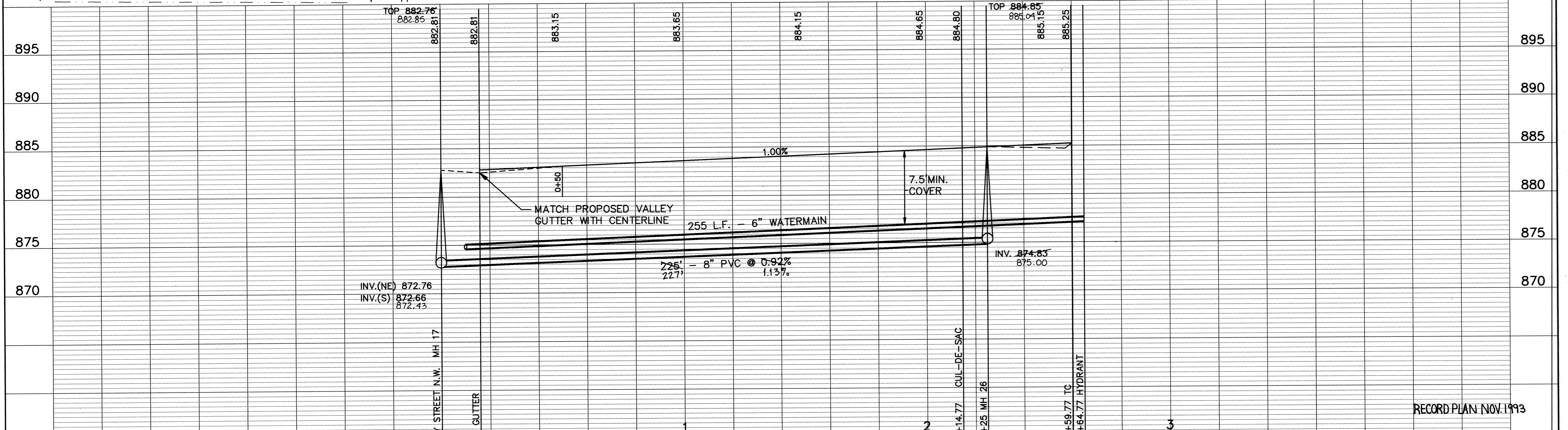
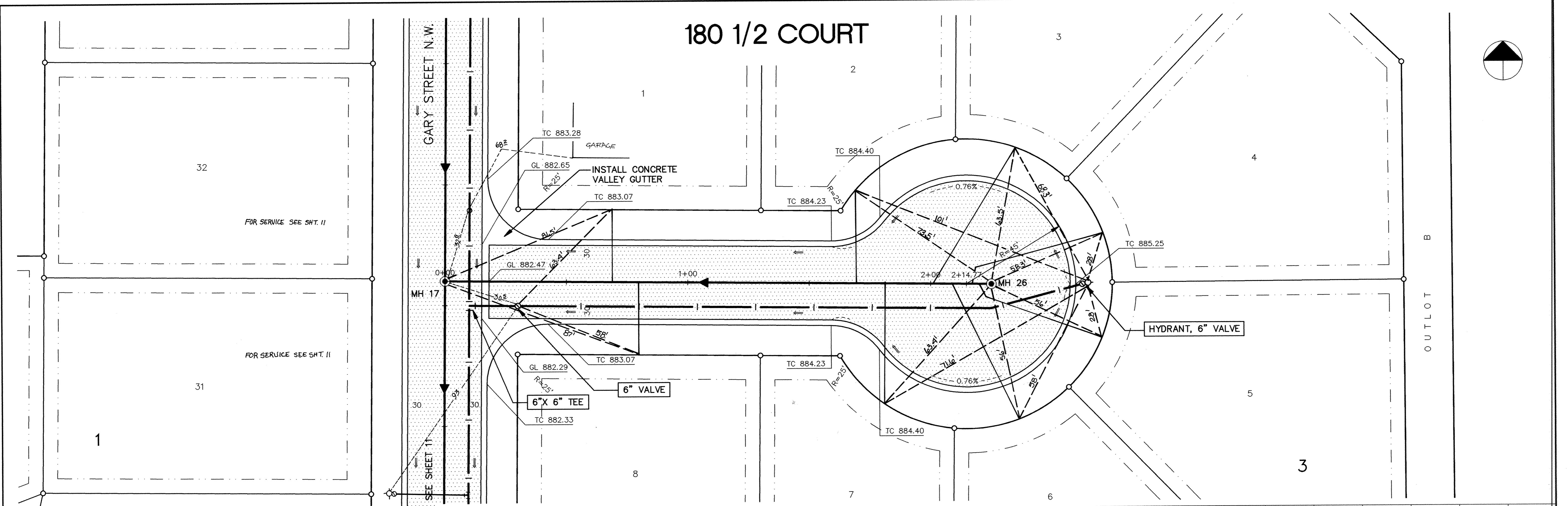


S&CO PRODUCTS • NEW HOPE, MINNESOTA
REORDER BY PART NUMBER 6582



180 1/2 COURT



RECORD PLAN NOV. 1993

I HEREBY CERTIFY THAT THIS PLAN, SPECIFICATION, OR REPORT WAS PREPARED BY ME OR UNDER MY DIRECT SUPERVISION AND THAT I AM A DULY REGISTERED PROFESSIONAL ENGINEER UNDER THE LAWS OF THE STATE OF MINNESOTA.

John Maier
DATE 4/28/93 REG. NO. 15716

MSA CONSULTING ENGINEERS
Maier Stewart & Associates Inc.

1959 SLOAN PLACE (612) 774-6021 ST. PAUL, MINNESOTA 55117
9800 SHELARD PARKWAY (612) 546-0432 MINNEAPOLIS, MINNESOTA 55441

DATE	DESCRIPTION	DESIGNED	CG
		CHECKED	TJM
		DRAWN	CLS
		GRAPHIC SCALE	
		0' HORIZ.	20'
		0' VERT.	5'

CITY OF ELK RIVER
SANITARY SEWER, WATERMAIN, STORM SEWER & STREET
180 1/2 COURT

DATE APRIL 1993 SHEET 16 OF 28 SHEETS PROJECT NO. 230-159