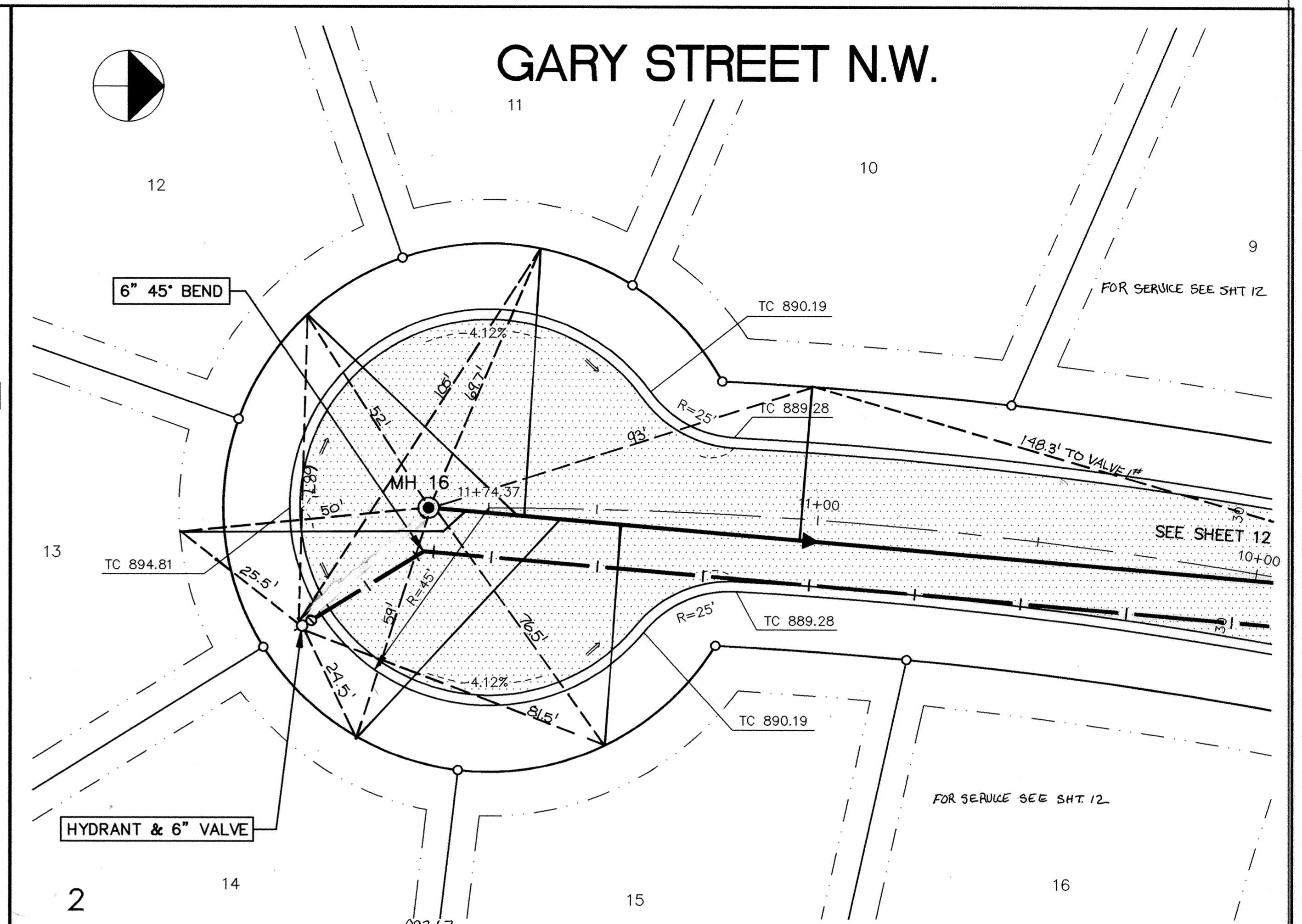


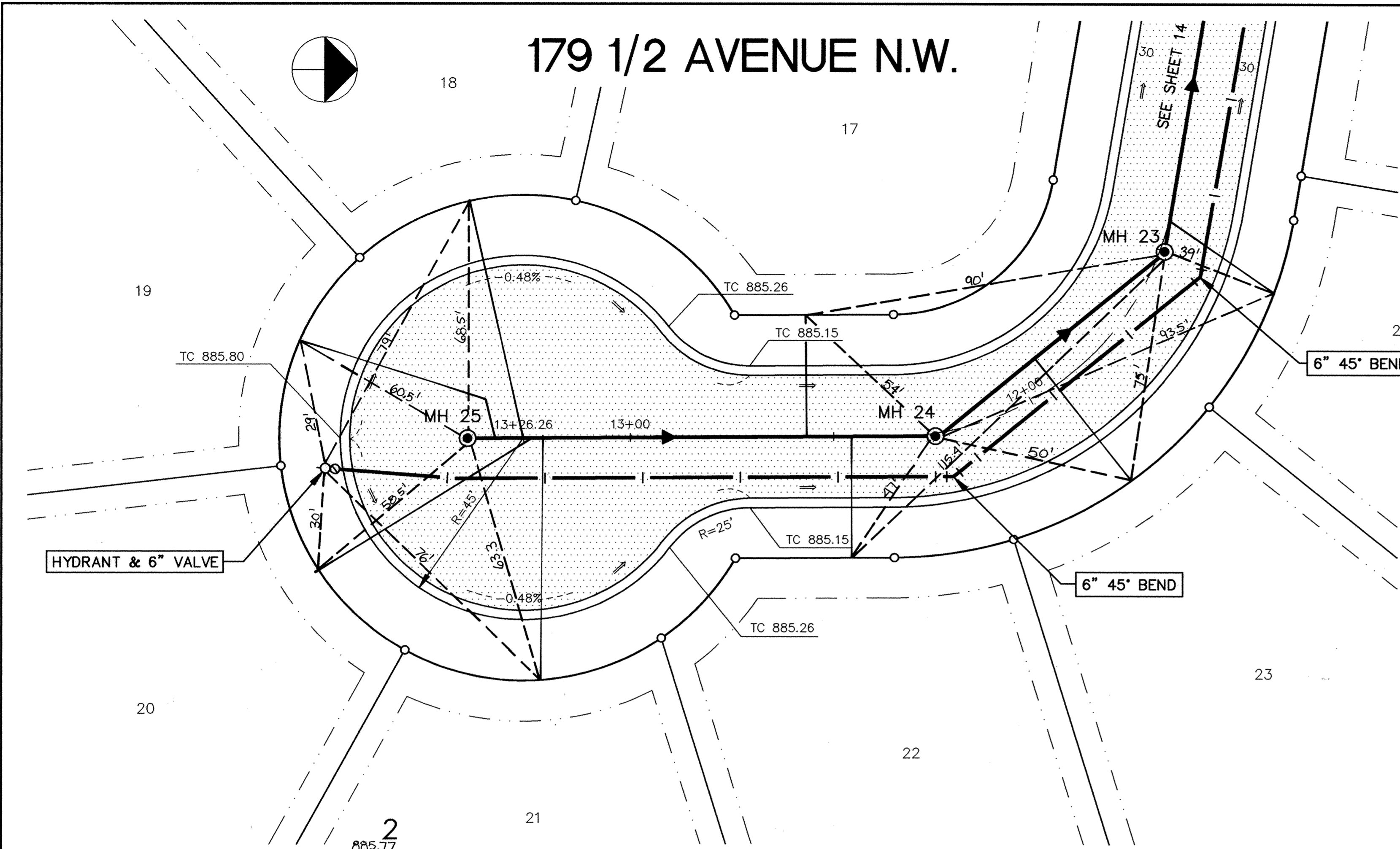
SARGO PRODUCTS • NEW HIRSH, MINNESOTA  
MEMBER BY PART NUMBER 6582  
SARGO PRODUCTS • NEW HIRSH, MINNESOTA  
MEMBER BY PART NUMBER 6582  
SARGO PRODUCTS • NEW HIRSH, MINNESOTA  
MEMBER BY PART NUMBER 6582  
SARGO PRODUCTS • NEW HIRSH, MINNESOTA  
MEMBER BY PART NUMBER 6582



895	885.80	TOP 885.77	885.62	885.42	885.20	884.78	TOP 884.50	884.64	883.94	TOP 883.85	884.03	883.52	882.67	882.32	880.98	888.22	886.84	885.56	884.49	900
890																				895
885																				890
880																				885
875																				880
870																				900

REVISIONS	DATE	DESCRIPTION	DESIGNED GG	CHECKED TJM	DRAWN GG

CITY OF ELK RIVER  
 SANITARY SEWER, WATERMAIN, STORM SEWER, & STREET  
 179 1/2 AVENUE N.W. & GARY STREET N.W. CUL-DE-SACS  
 DATE APRIL 1993 SHEET 15 OF 28 SHEETS PROJECT NO. 230-159



895	885.80	TOP 885.77	885.62	885.42	885.20	884.78	TOP 884.50	884.64	883.94	TOP 883.85	884.03	883.52	882.67	882.32	880.98	888.22	886.84	885.56	884.49	900
890																				895
885																				890
880																				885
875																				880
870																				900

REVISIONS	DATE	DESCRIPTION	DESIGNED GG	CHECKED TJM	DRAWN GG

I HEREBY CERTIFY THAT THIS PLAN, SPECIFICATION, OR REPORT WAS PREPARED BY ME OR UNDER MY DIRECT SUPERVISION AND THAT I AM A DULY REGISTERED PROFESSIONAL ENGINEER UNDER THE LAWS OF THE STATE OF MINNESOTA.  
 DATE 4/28/93 REG. NO. 15306  
 Maier Stewart & Associates Inc.  
 1959 SLOAN PLACE (612) 774-6021 ST. PAUL, MINNESOTA 55117  
 9800 SHELARD PARKWAY (612) 546-0432 MINNEAPOLIS, MINNESOTA 55441