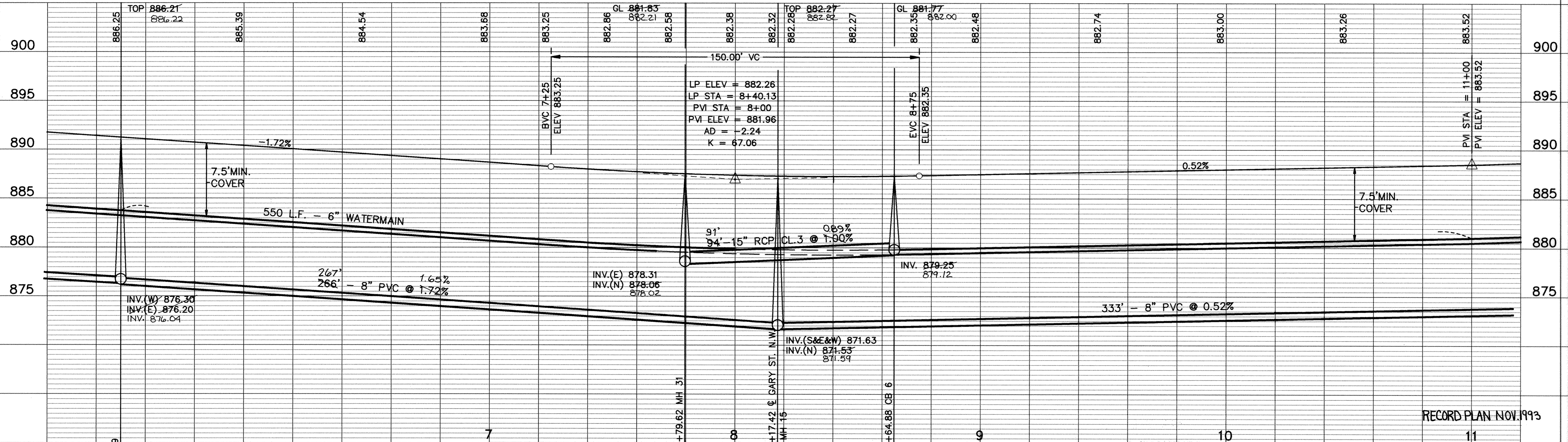
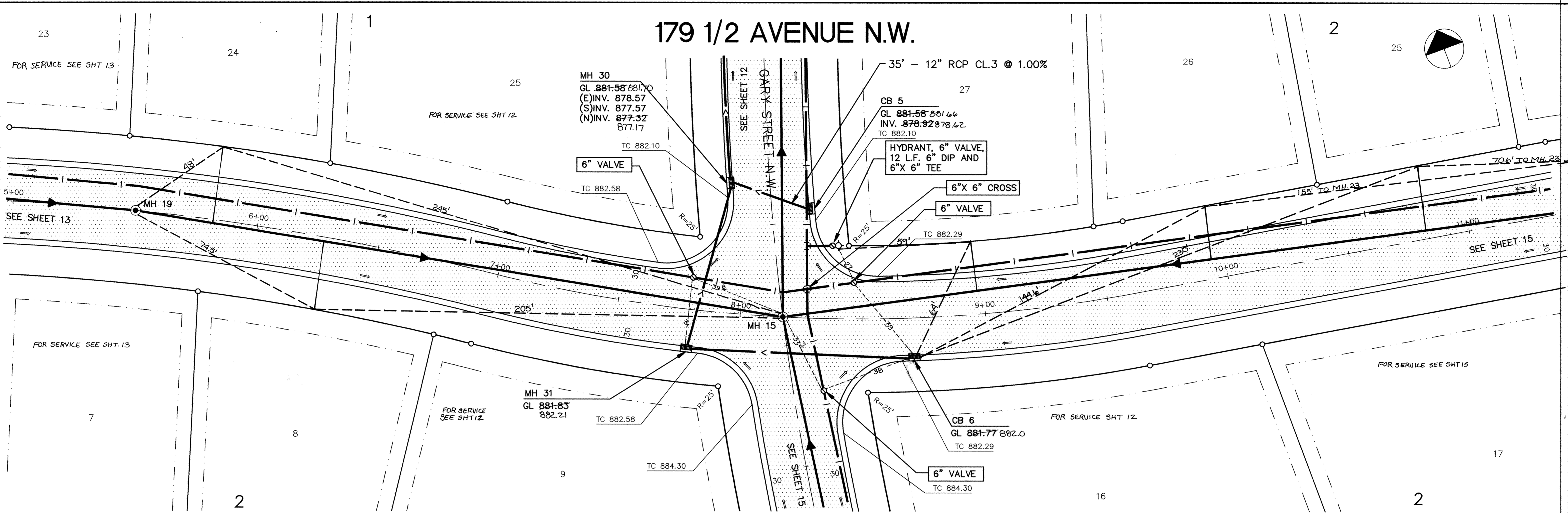


179 1/2 AVENUE N.W.



ER159-9	6
---------	---

I HEREBY CERTIFY THAT THIS PLAN, SPECIFICATION, OR REPORT WAS PREPARED BY ME OR UNDER MY DIRECT SUPERVISION AND THAT I AM A DULY REGISTERED PROFESSIONAL ENGINEER UNDER THE LAWS OF THE STATE OF MINNESOTA.

John J. Maier
DATE 4/28/93 REG. NO. 15316

MS&A CONSULTING ENGINEERS
Maier Stewart & Associates Inc.

1959 SLOAN PLACE (612) 774-6021 ST. PAUL, MINNESOTA 55117
9800 SHELARD PARKWAY (612) 546-0432 MINNEAPOLIS, MINNESOTA 55441

DATE	DESCRIPTION	DESIGNED	GG
		CHECKED	TJM
		DRAWN	CLS

GRAPHIC SCALE
HORIZ. 20
VERT. 5

CITY OF ELK RIVER
SANITARY SEWER, WATERMAIN, STORM SEWER, & STREET
179 1/2 AVENUE N.W.

RECORD PLAN NOV. 1993

DATE APRIL 1993 SHEET 14 OF 28 SHEETS PROJECT NO. 230-159