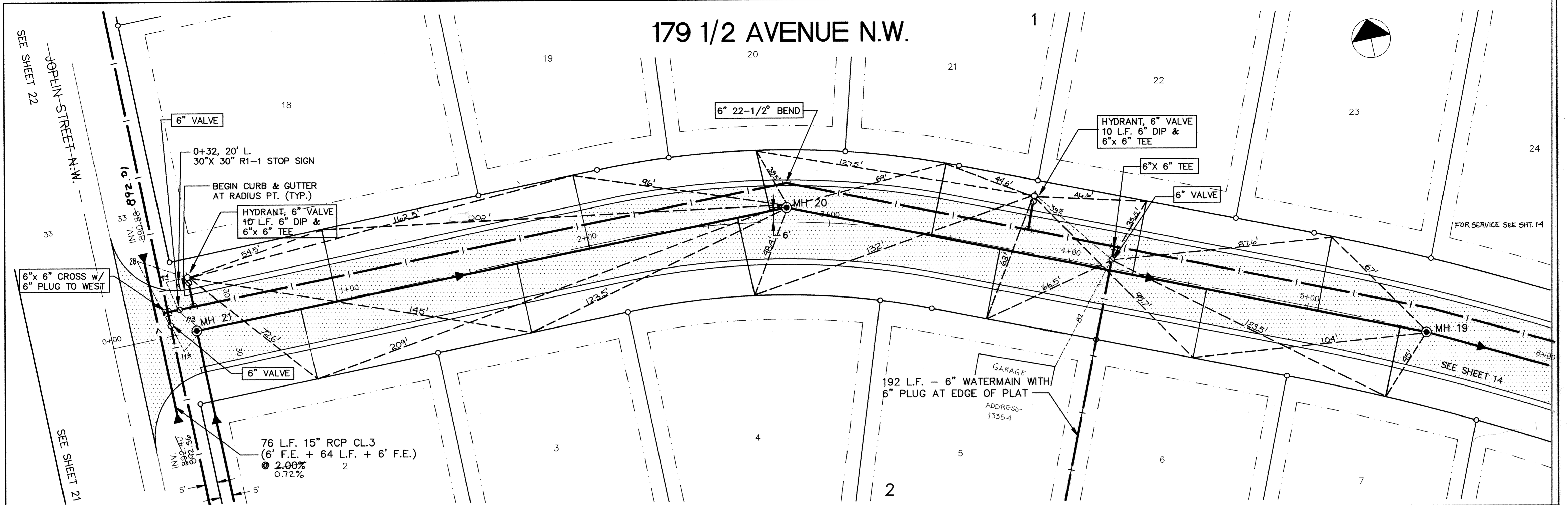


SACO PRODUCTS • NEW HOPE, MINNESOTA
REPRODUCED BY PART NUMBER 8582
SACO PRODUCTS • NEW HOPE, MINNESOTA
REPRODUCED BY PART NUMBER 8582
SACO PRODUCTS • NEW HOPE, MINNESOTA
REPRODUCED BY PART NUMBER 8582
SACO PRODUCTS • NEW HOPE, MINNESOTA
REPRODUCED BY PART NUMBER 8582

179 1/2 AVENUE N.W.



ER159-8	0	1
---------	---	---

I HEREBY CERTIFY THAT THIS PLAN, SPECIFICATION, OR REPORT WAS PREPARED BY ME OR UNDER MY DIRECT SUPERVISION AND THAT I AM A DULY REGISTERED PROFESSIONAL ENGINEER UNDER THE LAWS OF THE STATE OF MINNESOTA.
Cory J. Mauser
 DATE 4/28/93 REG. NO. 15316

MS&A CONSULTING ENGINEERS
 Maier Stewart & Associates Inc.
 1959 SLOAN PLACE (612) 774-6021 ST. PAUL, MINNESOTA 55117
 9800 SHELARD PARKWAY (612) 546-0432 MINNEAPOLIS, MINNESOTA 55441

DATE	DESCRIPTION	DESIGNED	GG
		CHECKED	TJM
		DRAWN	TB
GRAPHIC SCALE			
0 HORIZ. 20			
0 VERT. 5			

CITY OF ELK RIVER
 SANITARY SEWER, WATERMAIN, WATERMAIN, & STREET
 179 1/2 AVENUE N.W.
 DATE APRIL 1993 SHEET 13 OF 28 SHEETS PROJECT NO. 230-159