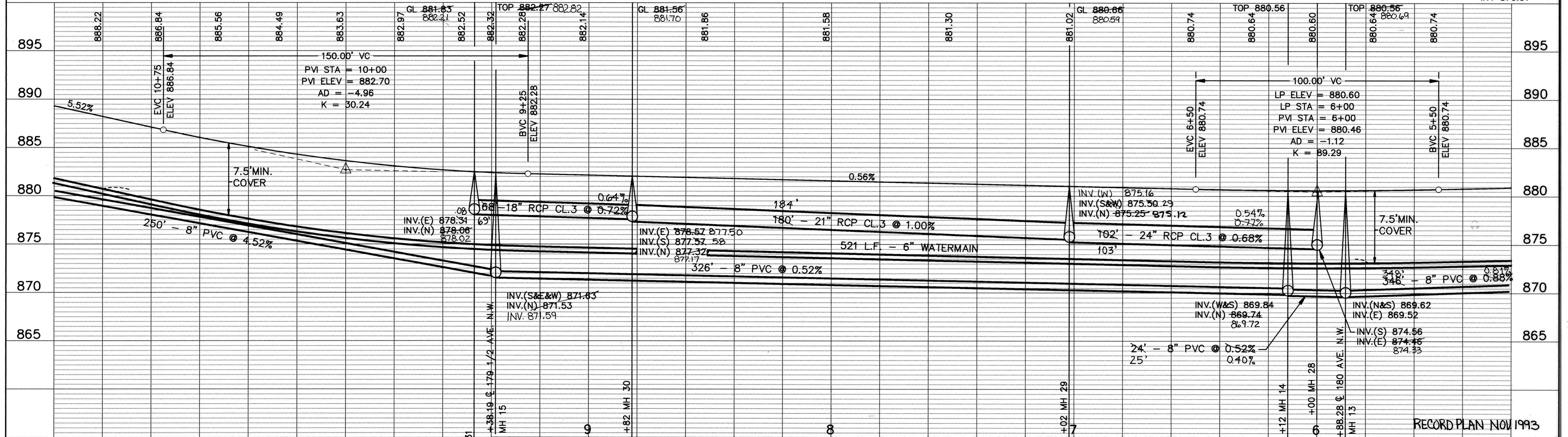
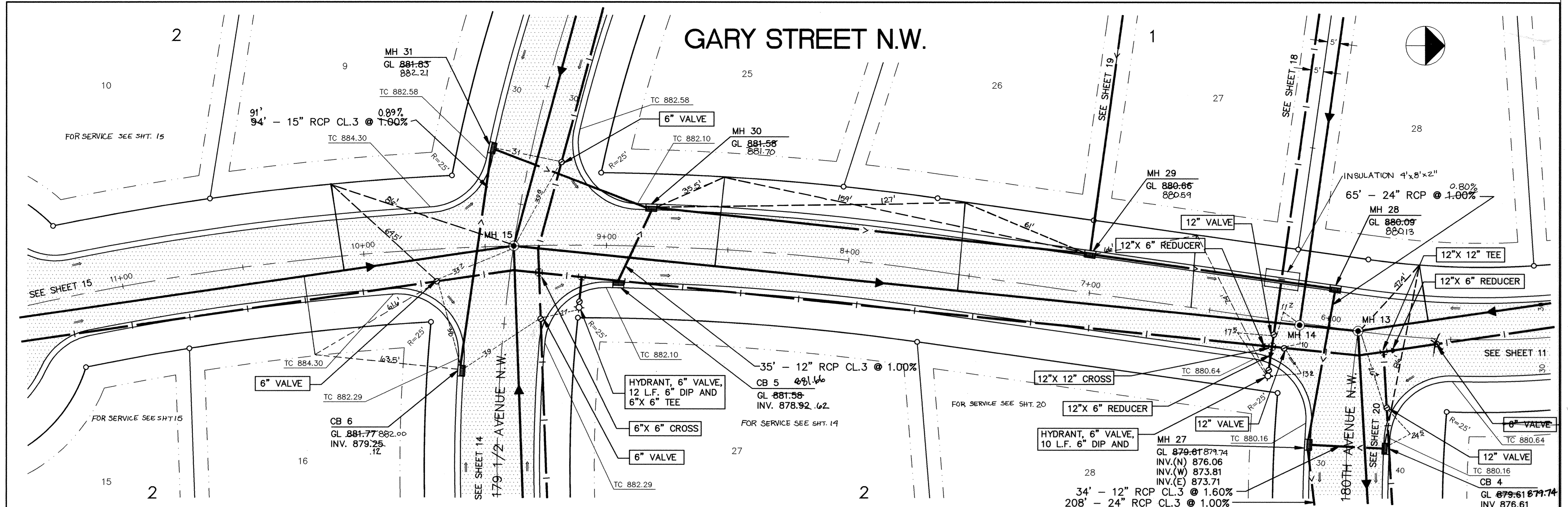


GARY STREET N.W.



I HEREBY CERTIFY THAT THIS PLAN, SPECIFICATION, OR REPORT WAS PREPARED BY ME OR UNDER MY DIRECT SUPERVISION AND THAT I AM A DULY REGISTERED PROFESSIONAL ENGINEER UNDER THE LAWS OF THE STATE OF MINNESOTA.

James J. Maier
DATE: 4/20/93 REG. NO. 15216

MS&A CONSULTING ENGINEERS
Maier Stewart & Associates Inc.

1959 SLOAN PLACE (612) 774-6021 ST. PAUL, MINNESOTA 55117
9800 SHELARD PARKWAY (612) 546-0432 MINNEAPOLIS, MINNESOTA 55441

DATE	DESCRIPTION	DESIGNED	CHECKED	DRAWN
		GG	TJM	CLS

GRAPHIC SCALE
0 HORIZ. 20'
0 VERT. 5'

CITY OF ELK RIVER
SANITARY SEWER, WATERMAIN, STORM SEWER, & STREET
GARY STREET N.W.

RECORD PLAN NOV 1993

DATE: APRIL 1993 SHEET 12 OF 28 SHEETS PROJECT NO. 230-159