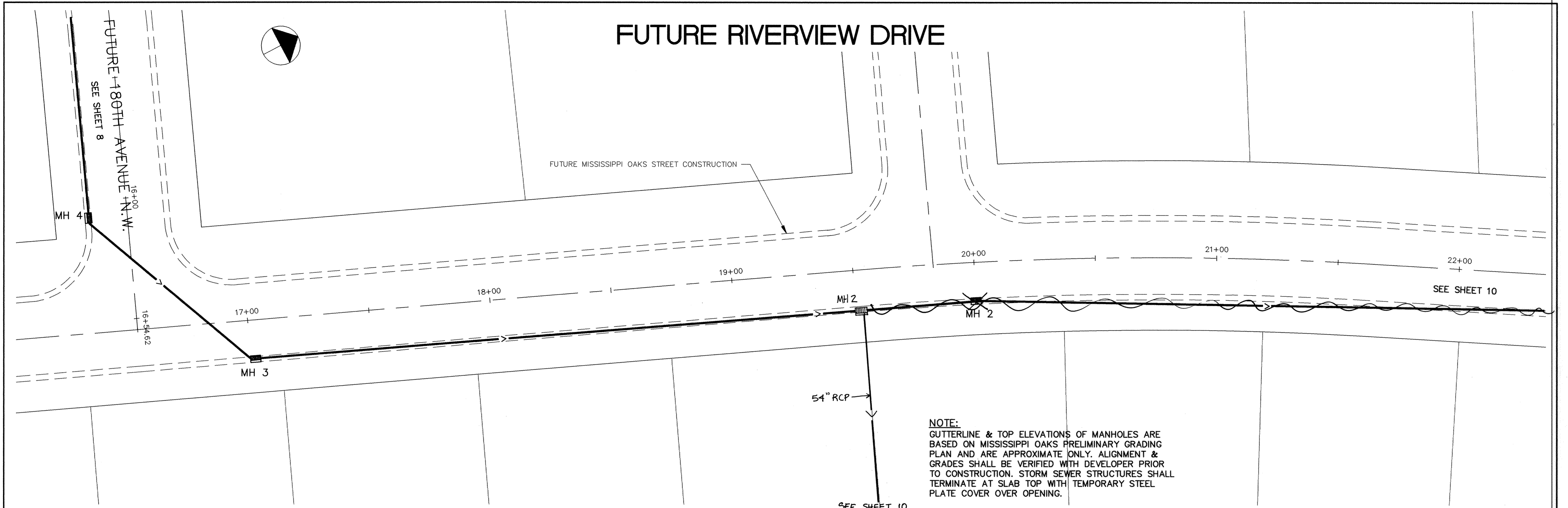
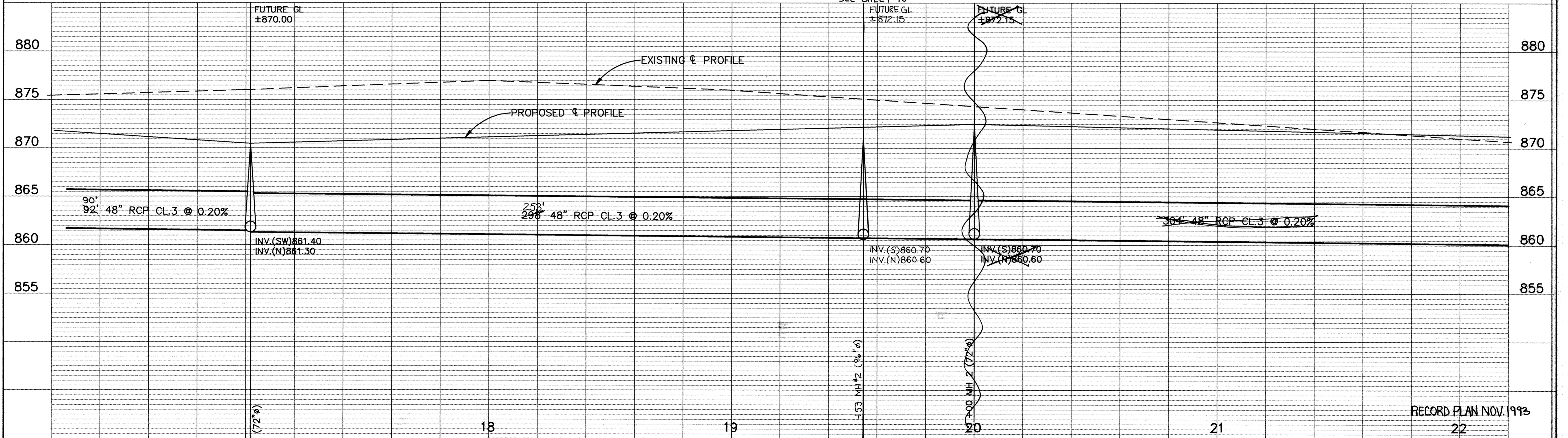


SAICO PRODUCTS • NEW HORIZON, MINNESOTA  
REPORT BY PART NUMBER 8022  
SAICO PRODUCTS • NEW HORIZON, MINNESOTA  
REPORT BY PART NUMBER 8022  
SAICO PRODUCTS • NEW HORIZON, MINNESOTA  
REPORT BY PART NUMBER 8022  
SAICO PRODUCTS • NEW HORIZON, MINNESOTA  
REPORT BY PART NUMBER 8022

# FUTURE RIVERVIEW DRIVE



**NOTE:**  
GUTTERLINE & TOP ELEVATIONS OF MANHOLES ARE BASED ON MISSISSIPPI OAKS PRELIMINARY GRADING PLAN AND ARE APPROXIMATE ONLY. ALIGNMENT & GRADES SHALL BE VERIFIED WITH DEVELOPER PRIOR TO CONSTRUCTION. STORM SEWER STRUCTURES SHALL TERMINATE AT SLAB TOP WITH TEMPORARY STEEL PLATE COVER OVER OPENING.



RECORD PLAN NOV. 1993

I HEREBY CERTIFY THAT THIS PLAN, SPECIFICATION, OR REPORT WAS PREPARED BY ME OR UNDER MY DIRECT SUPERVISION AND THAT I AM A DULY REGISTERED PROFESSIONAL ENGINEER UNDER THE LAWS OF THE STATE OF MINNESOTA.  
*Gene J. Maier*  
 DATE 4/20/93 REG. NO. 15316

**MS&A** CONSULTING ENGINEERS  
**Maier Stewart & Associates Inc.**  
 1959 SLOAN PLACE (612) 774-6021 ST. PAUL, MINNESOTA 55117  
 9800 SHELARD PARKWAY (612) 546-0432 MINNEAPOLIS, MINNESOTA 55441

| DATE | DESCRIPTION | DESIGNED | CHECKED | DRAWN |
|------|-------------|----------|---------|-------|
|      |             | GG       | TJM     | GG    |

GRAPHIC SCALE  
 0' HORIZ. 20'  
 0' VERT. 5'

CITY OF ELK RIVER  
 STORM SEWER CONSTRUCTION  
 FUTURE RIVERVIEW DRIVE

DATE APRIL 1993 SHEET 9 OF 28 SHEETS PROJECT NO. 230-159