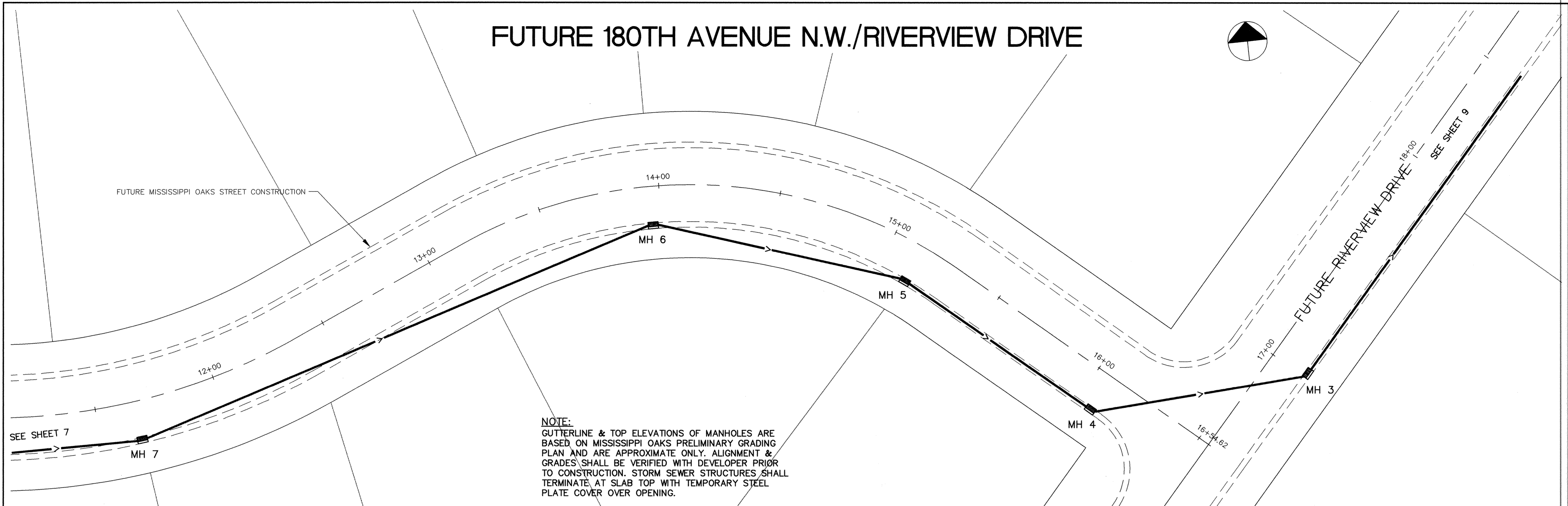
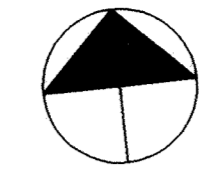
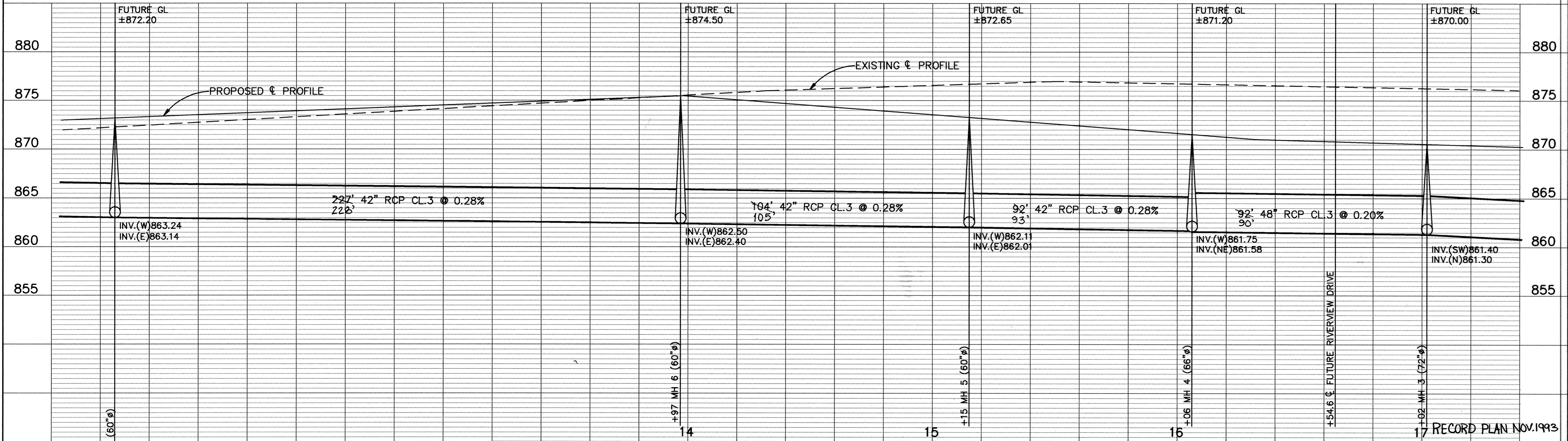


FUTURE 180TH AVENUE N.W./RIVERVIEW DRIVE



NOTE:
 GUTTERLINE & TOP ELEVATIONS OF MANHOLES ARE BASED ON MISSISSIPPI OAKS PRELIMINARY GRADING PLAN AND ARE APPROXIMATE ONLY. ALIGNMENT & GRADES SHALL BE VERIFIED WITH DEVELOPER PRIOR TO CONSTRUCTION. STORM SEWER STRUCTURES SHALL TERMINATE AT SLAB TOP WITH TEMPORARY STEEL PLATE COVER OVER OPENING.



I HEREBY CERTIFY THAT THIS PLAN, SPECIFICATION, OR REPORT WAS PREPARED BY ME OR UNDER MY DIRECT SUPERVISION AND THAT I AM A DULY REGISTERED PROFESSIONAL ENGINEER UNDER THE LAWS OF THE STATE OF MINNESOTA. <i>Jerry Maier</i> DATE: 4/20/93 REG. NO. 15316	MSA CONSULTING ENGINEERS Maier Stewart & Associates Inc. 1959 SLOAN PLACE (612) 774-6021 ST. PAUL, MINNESOTA 55117 9800 SHELARD PARKWAY (612) 546-0432 MINNEAPOLIS, MINNESOTA 55441
---	--

REVISIONS	DATE	DESCRIPTION	DESIGNED	CHECKED	DRAWN
			GG	TJM	GG

CITY OF ELK RIVER
STORM SEWER CONSTRUCTION
FUTURE 180TH AVENUE N.W./RIVERVIEW DRIVE

GRAPHIC SCALE
 0' HORIZ. 20'
 0' VERT. 5'
 RECORD PLAN NOV. 1993

DATE: APRIL 1993 SHEET 8 OF 28 SHEETS PROJECT NO. 230-159

DRAWING NUMBER
 HERIT 93
 SAICO PRODUCTS • NEW HOPK, MINNESOTA
 REQUESTED BY PART NUMBER 6522
 PROJECT NUMBER 230-159