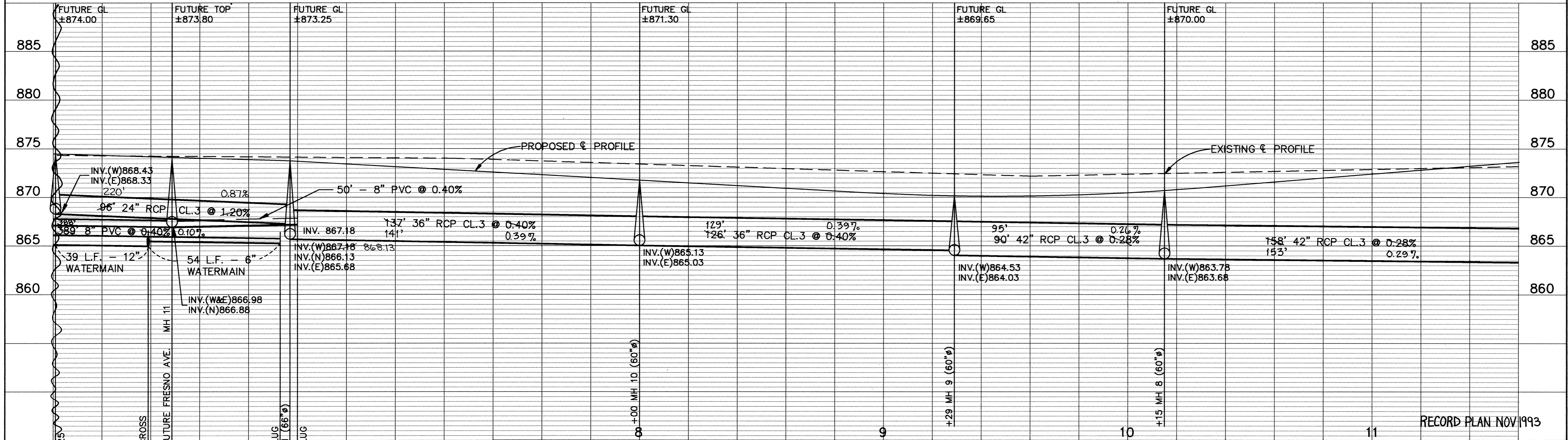
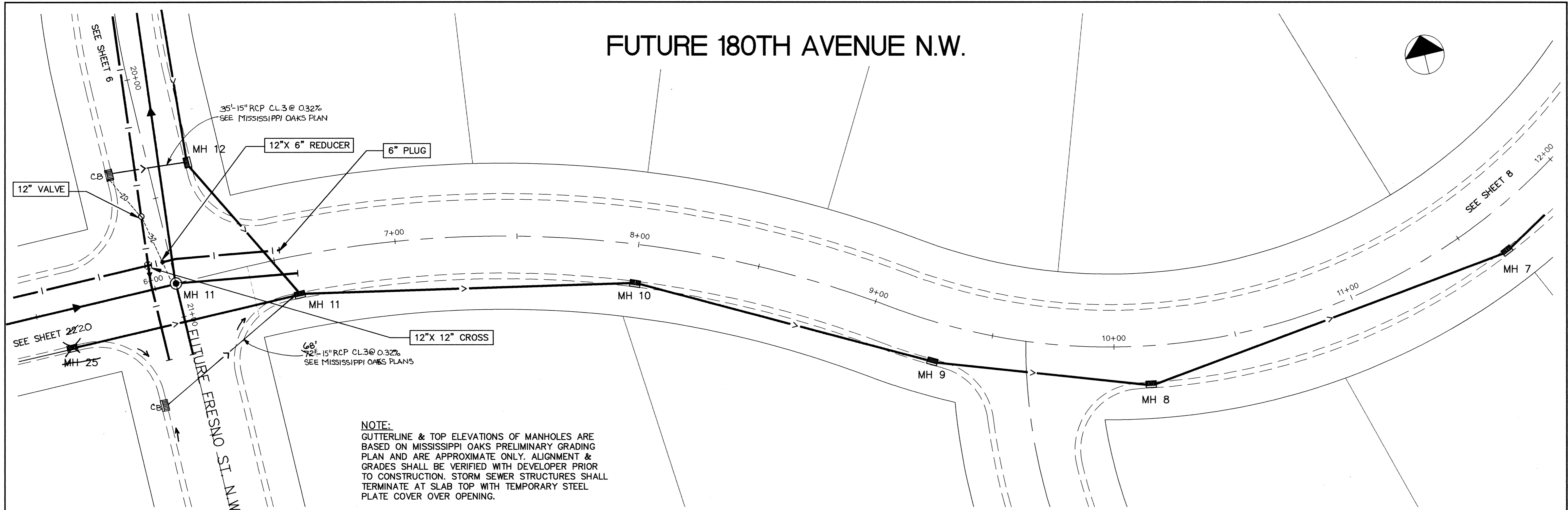
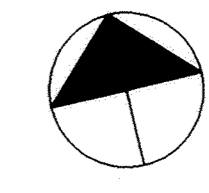


FUTURE 180TH AVENUE N.W.



I HEREBY CERTIFY THAT THIS PLAN, SPECIFICATION, OR REPORT WAS PREPARED BY ME OR UNDER MY DIRECT SUPERVISION AND THAT I AM A DULY REGISTERED PROFESSIONAL ENGINEER UNDER THE LAWS OF THE STATE OF MINNESOTA.

Tom Maier
DATE 4/20/93 REG. NO. 15316

MSA CONSULTING ENGINEERS
Maier Stewart & Associates Inc.

1959 SLOAN PLACE (612) 774-6021 ST. PAUL, MINNESOTA 55117
9800 SHELARD PARKWAY (612) 546-0432 MINNEAPOLIS, MINNESOTA 55441

REVISIONS	DATE	DESCRIPTION	DESIGNED	CHECKED	DRAWN
			GG	TJM	GG

GRAPHIC SCALE
0 HORIZ. 20'
0 VERT. 5'

CITY OF ELK RIVER
SANITARY SEWER & STORM SEWER
FUTURE 180TH AVENUE N.W.

DATE APRIL 1993 SHEET 7 OF 28 SHEETS PROJECT NO. 230-159