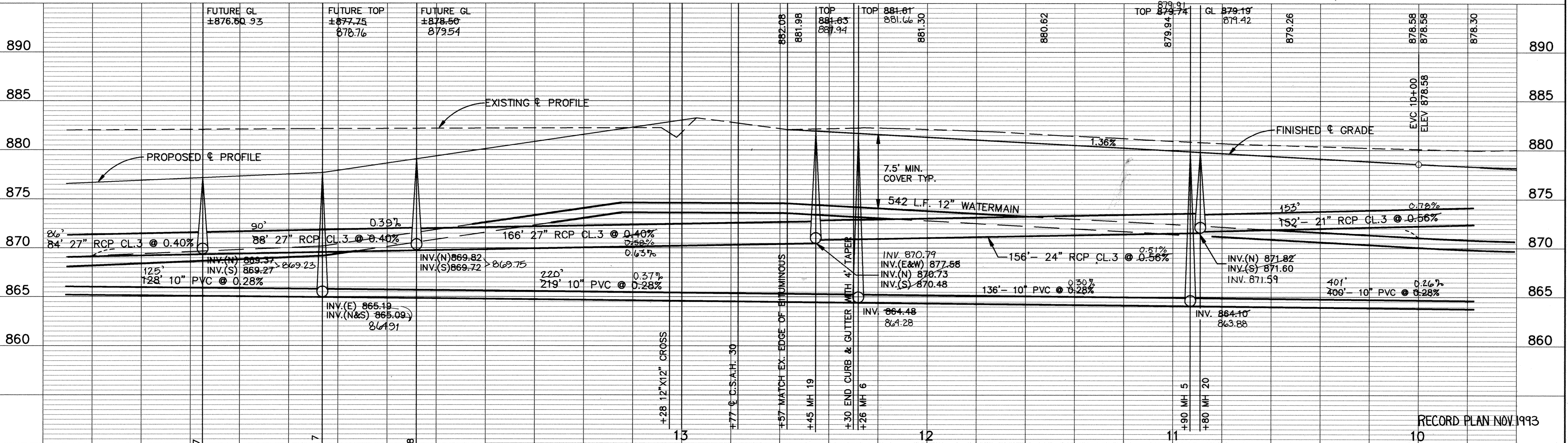
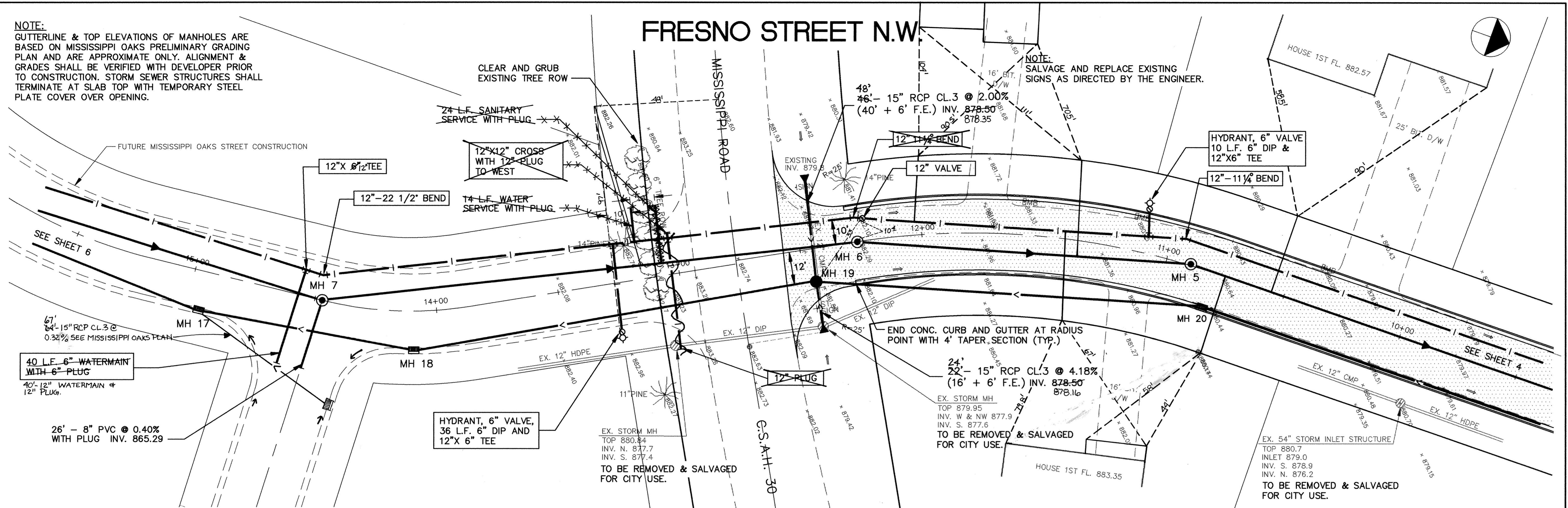


FRESNO STREET N.W.

NOTE:
 GUTTERLINE & TOP ELEVATIONS OF MANHOLES ARE BASED ON MISSISSIPPI OAKS PRELIMINARY GRADING PLAN AND ARE APPROXIMATE ONLY. ALIGNMENT & GRADES SHALL BE VERIFIED WITH DEVELOPER PRIOR TO CONSTRUCTION. STORM SEWER STRUCTURES SHALL TERMINATE AT SLAB TOP WITH TEMPORARY STEEL PLATE COVER OVER OPENING.

NOTE:
 SALVAGE AND REPLACE EXISTING SIGNS AS DIRECTED BY THE ENGINEER.



ER159-17	15	14
----------	----	----

I HEREBY CERTIFY THAT THIS PLAN, SPECIFICATION, OR REPORT WAS PREPARED BY ME OR UNDER MY DIRECT SUPERVISION AND THAT I AM A DULY REGISTERED PROFESSIONAL ENGINEER UNDER THE LAWS OF THE STATE OF MINNESOTA.

Henry Maier
 DATE 4/23/93 REG. NO. 15216

MS&A CONSULTING ENGINEERS
 Maier Stewart & Associates Inc.
 1959 SLOAN PLACE (612) 774-6021 ST. PAUL, MINNESOTA 55117
 9800 SHELARD PARKWAY (612) 546-0432 MINNEAPOLIS, MINNESOTA 55441

DATE	DESCRIPTION	DESIGNED	CHECKED	DRAWN
		GG	TJM	TB

GRAPHIC SCALE
 0 HORIZ. 20'
 0 VERT. 5'

CITY OF ELK RIVER
 SANITARY SEWER, WATERMAIN, STREET & STORM SEWER
 FRESNO STREET N.W.

RECORD PLAN NOV. 1993

DATE APRIL 1993 SHEET 5 OF 28 SHEETS PROJECT NO. 230-159

SACO PRODUCTS • NEW HOPE, MINNESOTA
 REQUESTED BY PARTY NUMBER 8030
 SACO PRODUCTS • NEW HOPE, MINNESOTA
 REQUESTED BY PARTY NUMBER 8030
 SACO PRODUCTS • NEW HOPE, MINNESOTA
 REQUESTED BY PARTY NUMBER 8030
 SACO PRODUCTS • NEW HOPE, MINNESOTA
 REQUESTED BY PARTY NUMBER 8030