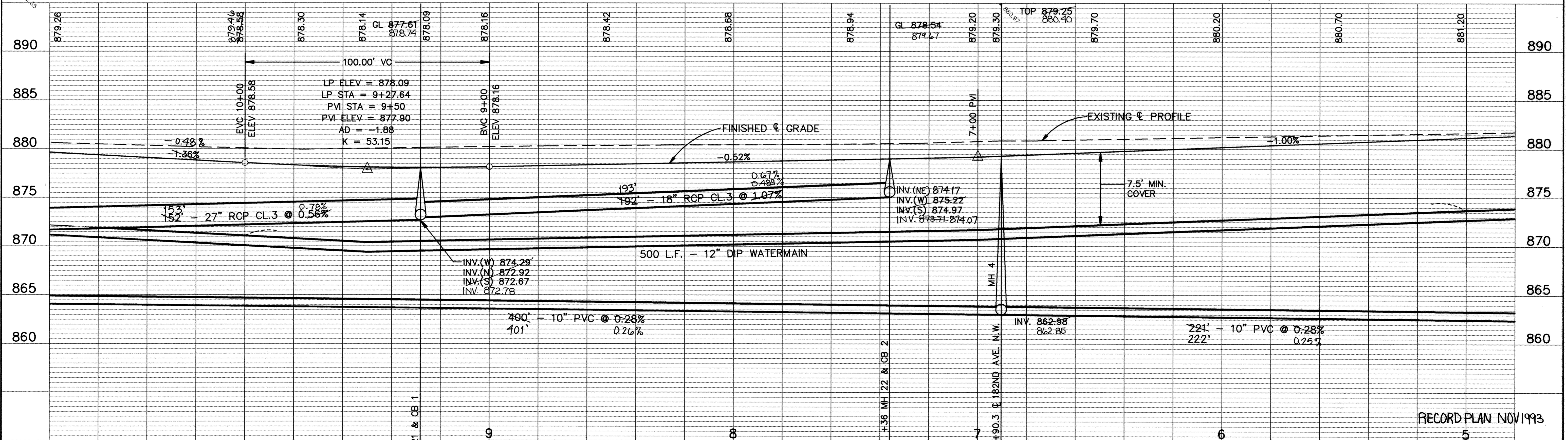
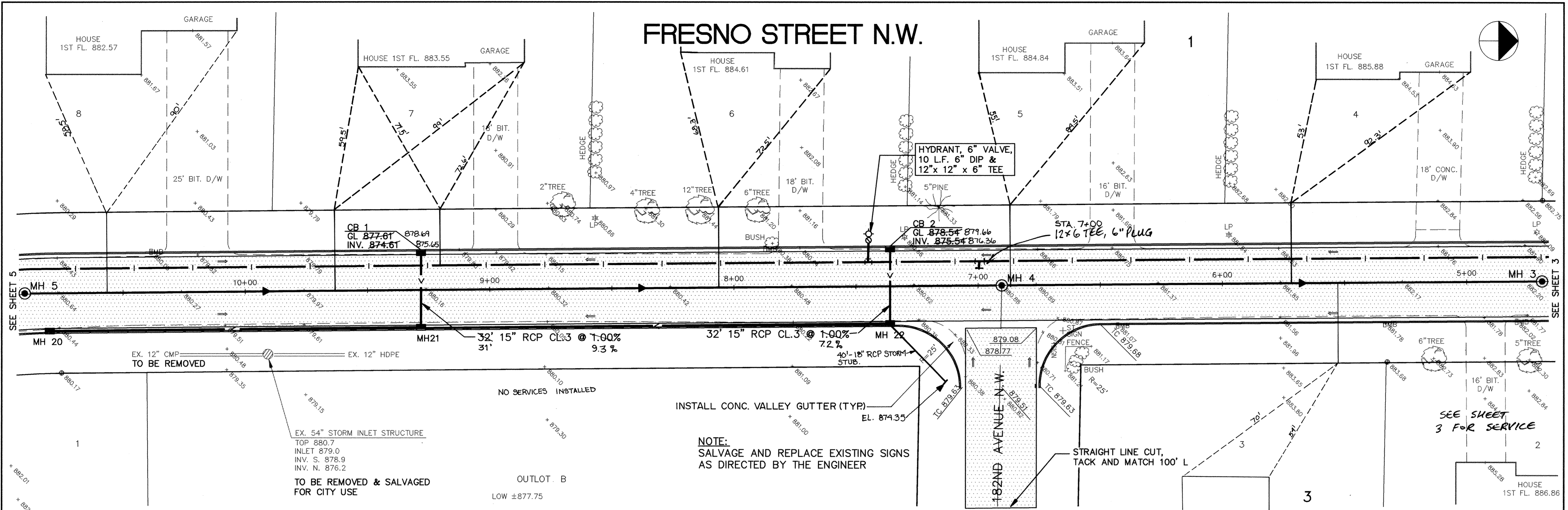


FRESNO STREET N.W.



ER159-16 10

I HEREBY CERTIFY THAT THIS PLAN, SPECIFICATION, OR REPORT WAS PREPARED BY ME OR UNDER MY DIRECT SUPERVISION AND THAT I AM A DULY REGISTERED PROFESSIONAL ENGINEER UNDER THE LAWS OF THE STATE OF MINNESOTA.

Janis J. Maier
DATE 4/28/93 REG. NO. 15316

MS&A CONSULTING ENGINEERS
Maier Stewart & Associates Inc.
1959 SLOAN PLACE (612) 774-6021 ST. PAUL, MINNESOTA 55117
9800 SHELARD PARKWAY (612) 546-0432 MINNEAPOLIS, MINNESOTA 55441

DATE	DESCRIPTION	DESIGNED	CHECKED	DRAWN
		GG	TJM	TB

GRAPHIC SCALE
0 HORIZ. 20'
0 VERT. 5'

REVISIONS

CITY OF ELK RIVER
SANITARY SEWER, WATERMAIN, STREET & STORM SEWER
FRESNO STREET N.W.

DATE APRIL 1993 SHEET 4 OF 28 SHEETS PROJECT NO. 230-159

RECORD PLAN NOV 1993