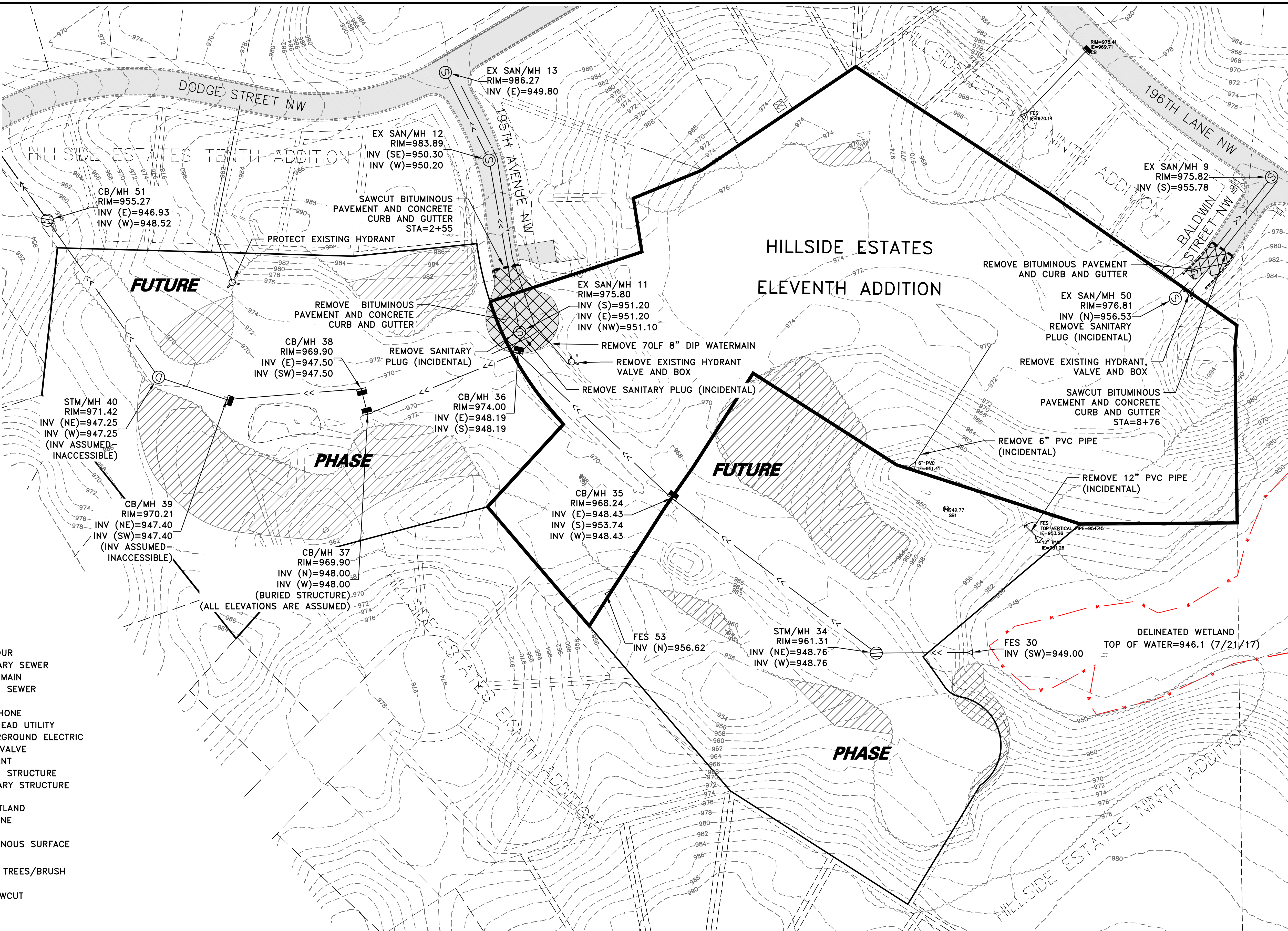


NOTES:

1. SAWCUT THROUGH CURB AND GUTTER SHALL BE PAID PER ITEM 2104—SAWCUT BITUMINOUS PAVEMENT.
2. SEE DETAIL (2/3) FOR MATCHING EXISTING PAVEMENT.
3. REMOVAL OF ANY SIGNS SHALL BE INCIDENTAL.

LEGEND	
- - - - - 856	EXISTING CONTOUR
- - - - -	EXISTING SANITARY SEWER
- - - - -	EXISTING WATERMAIN
- - - - -	EXISTING STORM SEWER
- - - - -	EXISTING GAS
- - - - -	EXISTING TELEPHONE
- - - - -	EXISTING OVERHEAD UTILITY
- - - - -	EXISTING UNDERGROUND ELECTRIC
	EXISTING GATE VALVE
	EXISTING HYDRANT
	EXISTING STORM STRUCTURE
	EXISTING SANITARY STRUCTURE
- - - - - W	DELINEATED WETLAND
	EXISTING TREELINE
	EXISTING BITUMINOUS SURFACE
	CLEAR & GRUB TREES/BRUSH
- - - - -	FULL DEPTH SAWCUT



Apr 09, 2018 - 9:26am
 K:\PRIVATE\213515\ENGINEERING\213515_EXISTING.dwg

DATE	REVISION
11/28/17	PLAN REVISIONS PER CITY REVIEW
2/9/18	PLAN REVISIONS
3/8/18	UPDATE CONTOURS IN BLOCK 3
3/19/18	PLAN REVISIONS
4/6/18	ADD SOIL BORING

I hereby certify that this plan, specification, or report was prepared by me or under my direct supervision and that I am a duly Licensed Professional Engineer under the laws of the State of Minnesota.

 CRAIG J. JOCHUM, PE
 Date 7/31/17 Lic. No. 23461

DESIGNED BY: CJJ
 DRAWN BY: MSS
 CHECKED BY: TAE

RUM RIVER
 LAND SURVEYORS & ENGINEERS
 PO Box 1044 Princeton, MN 55371
 Telephone: (763) 389-4476 Fax: (763) 631-0376

HILLSIDE ESTATES ELEVENTH ADDITION
 CITY OF ELK RIVER, MINNESOTA

EXISTING CONDITIONS AND REMOVALS PLAN
 CITY OF ELK RIVER, MINNESOTA

SHEET 7 OF 22 SHEETS
 P-2135.15