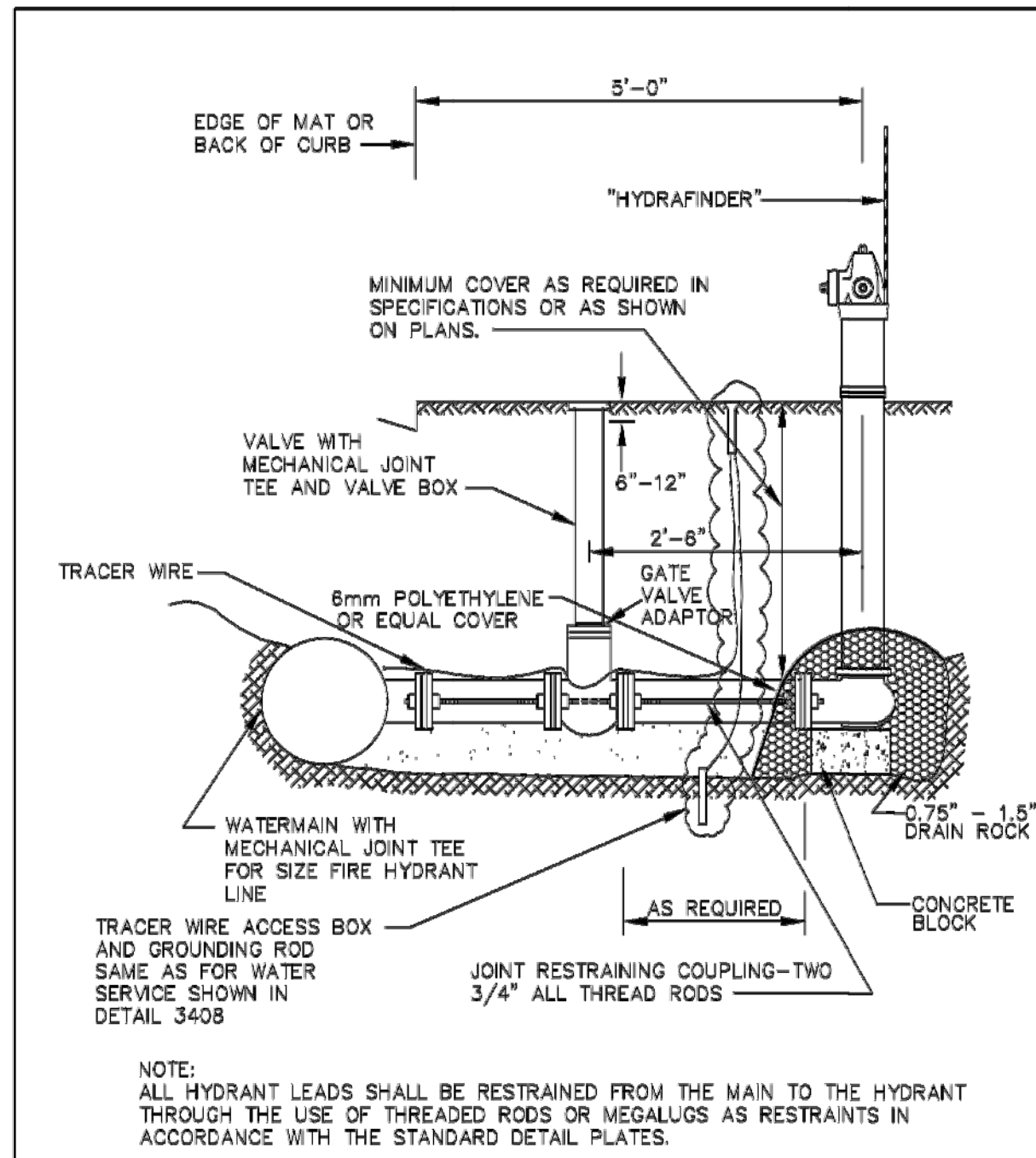


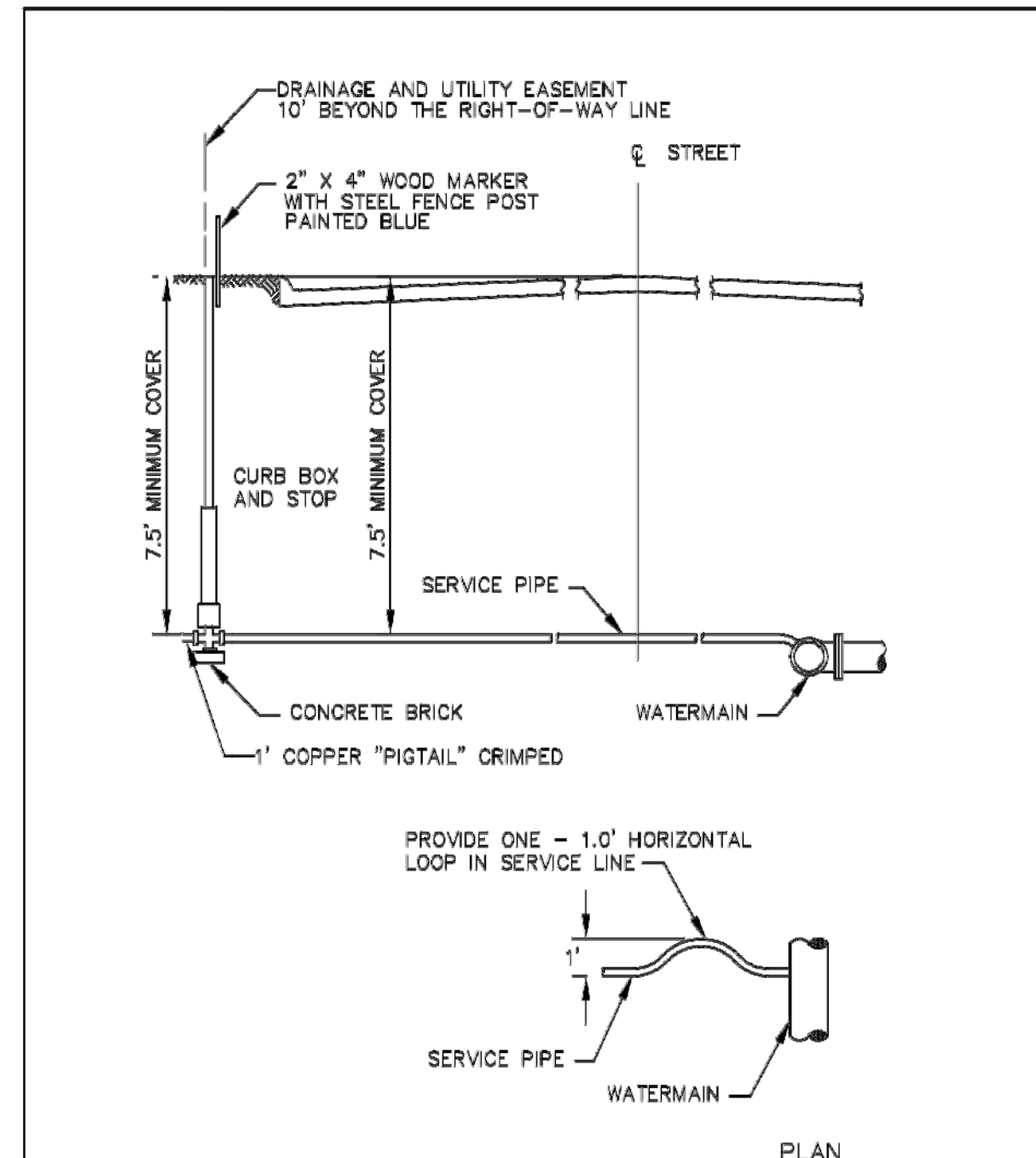
NOTE: "HYDRAFINDER" HYDRANT LOCATING DEVICES REQUIRED - SEE SPECIFICATIONS. REV: 3/2006

PACER HYDRANT DETAIL  
STANDARD PLATE NO. 3401



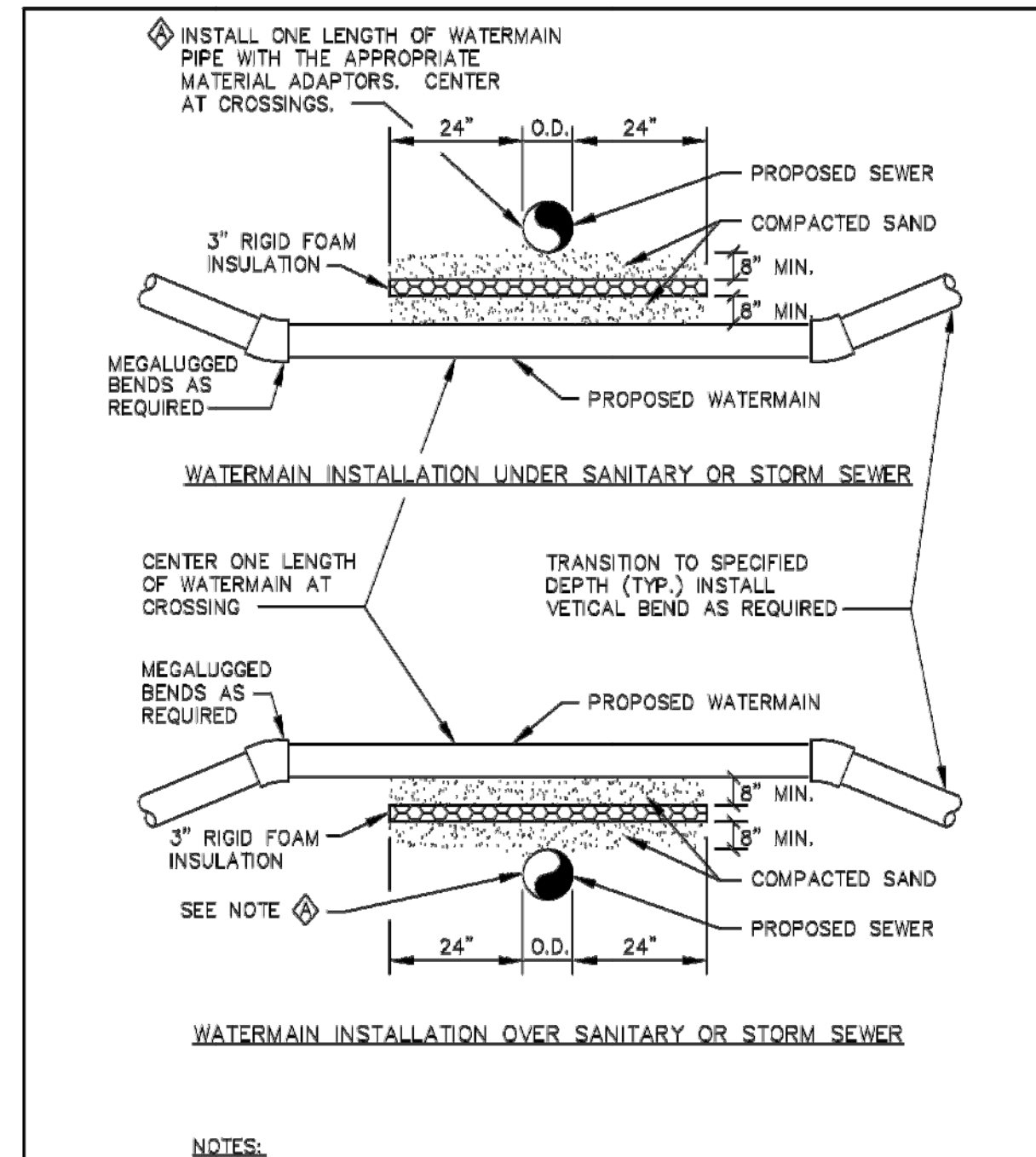
REV: 2/2017

HYDRANT RESTRAINT DETAIL  
STANDARD PLATE NO. 3402



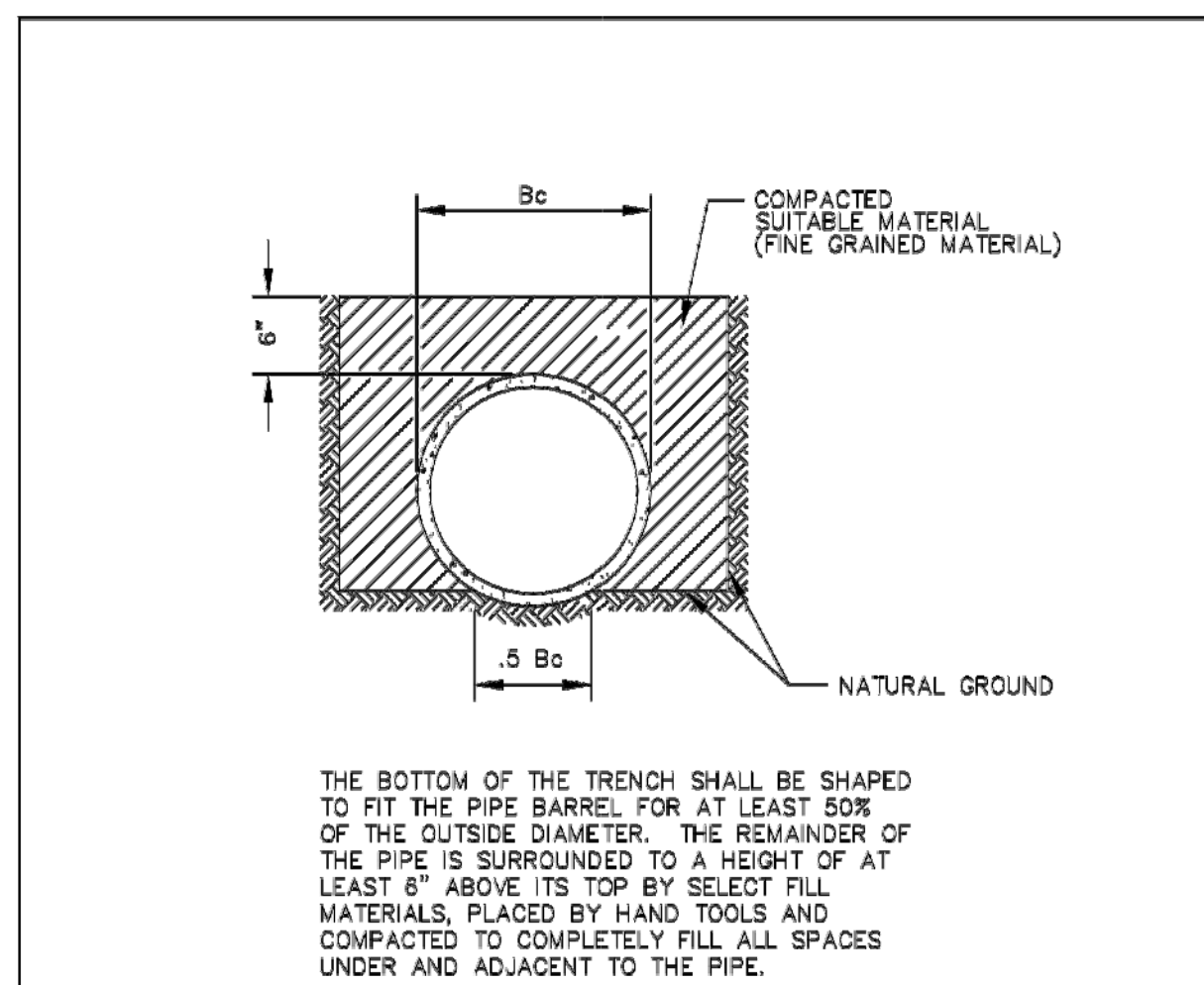
REV: 2/2017

TYPICAL SERVICE DETAIL  
STANDARD PLATE NO. 3403



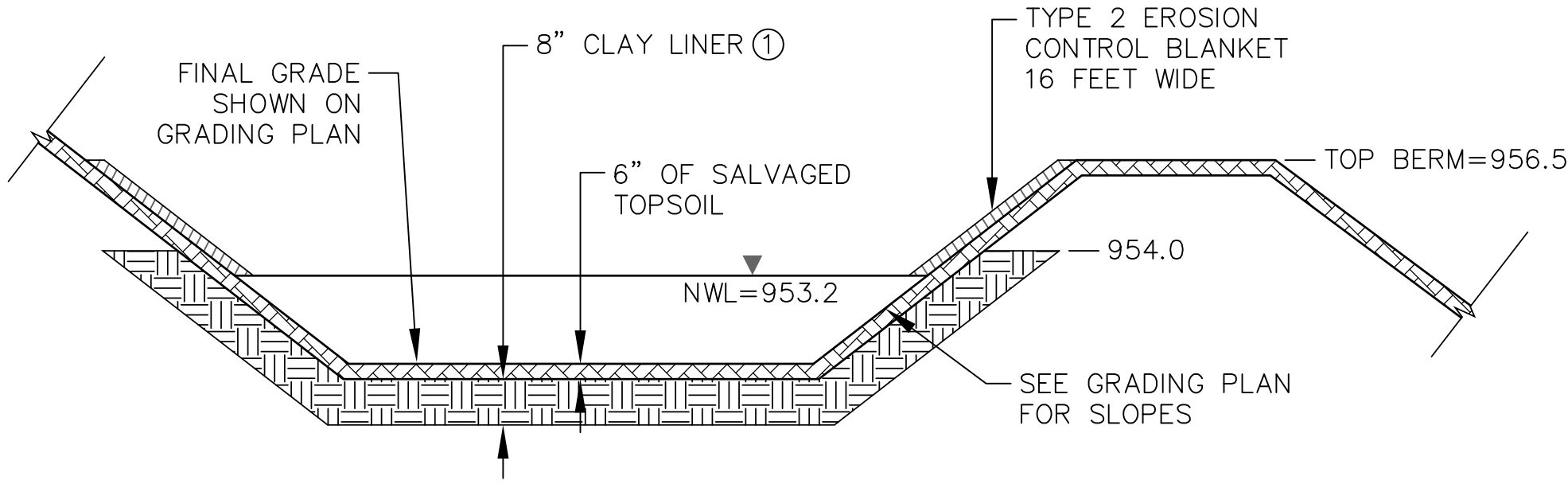
REV: 2/2017

WATERMAIN CROSSING  
STANDARD PLATE NO. 3404



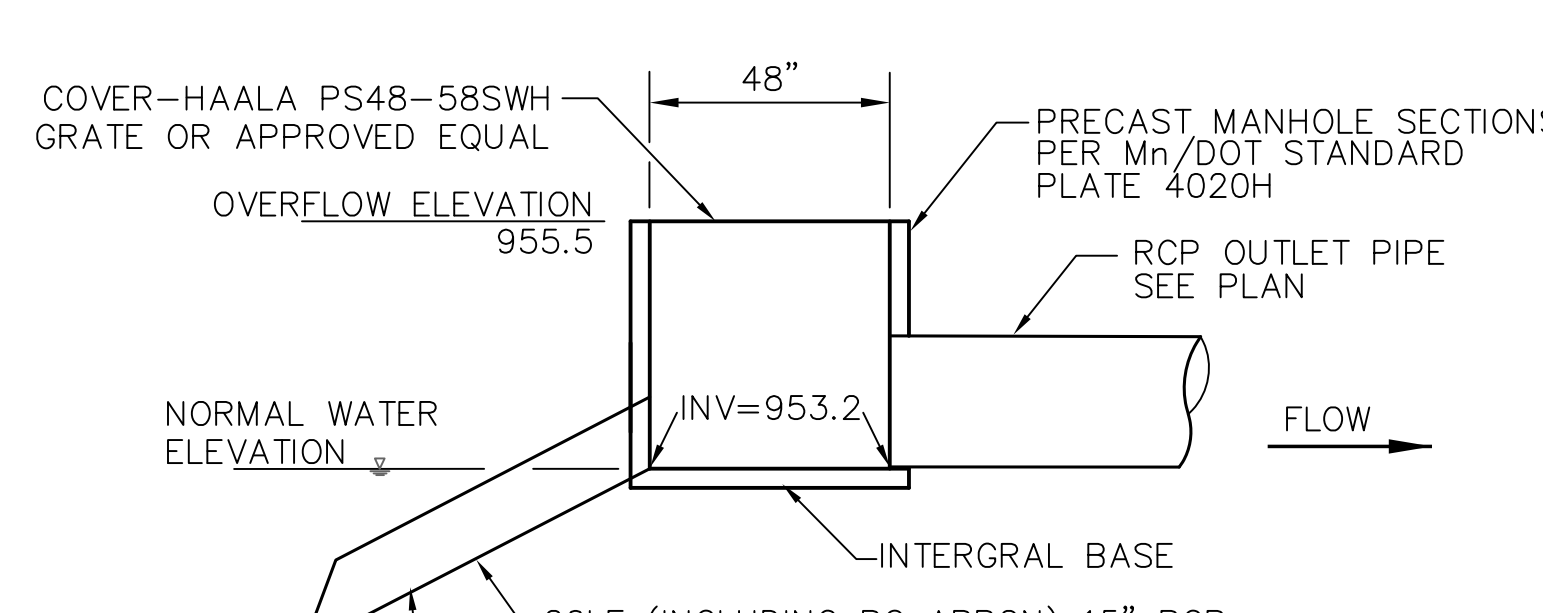
REV: 3/2006

CLASS C PIPE BEDDING  
STANDARD PLATE NO. 3405



REFERENCE NOTE:  
① THE POND LINER SHALL BE CONSTRUCTED WITH SOILS THAT HAVE A UNIFIED SOIL CLASSIFICATION OF SC, CL, CH OR A COMBINATION OF THESE SOILS.

POND 1  
NO SCALE



OUTLET DETAIL  
NO SCALE

May 10, 2018 - 8:10am K:\PRIVATE\21-2135\15\ENGINEERING\21-2135-15-DETAILS.dwg

DATE	REVISION
11/28/17	PLAN REVISIONS PER CITY REVIEW
2/9/18	PLAN REVISIONS
3/19/18	PLAN REVISIONS
5/7/18	PLAN REVISIONS PER CITY REVIEW

I hereby certify that this plan, specification, or report was prepared by me or under my direct supervision and that I am a duly Licensed Professional Engineer under the laws of the State of Minnesota.

*Chris J. Jochum, PE*  
Chris J. Jochum, PE  
Lic. No. 23461

Date 7/31/17

DESIGNED BY: CJJ  
DRAWN BY: MSS  
CHECKED BY: TAE



HILLSIDE ESTATES ELEVENTH ADDITION

DETAILS  
CITY OF ELK RIVER, MINNESOTA

SHEET 5 OF 22 SHEETS  
P-2135.15